

4642 Shrewsbury Court, Woodmont Manor, Cave Spring, Roanoke, Roanoke County, Virginia, United

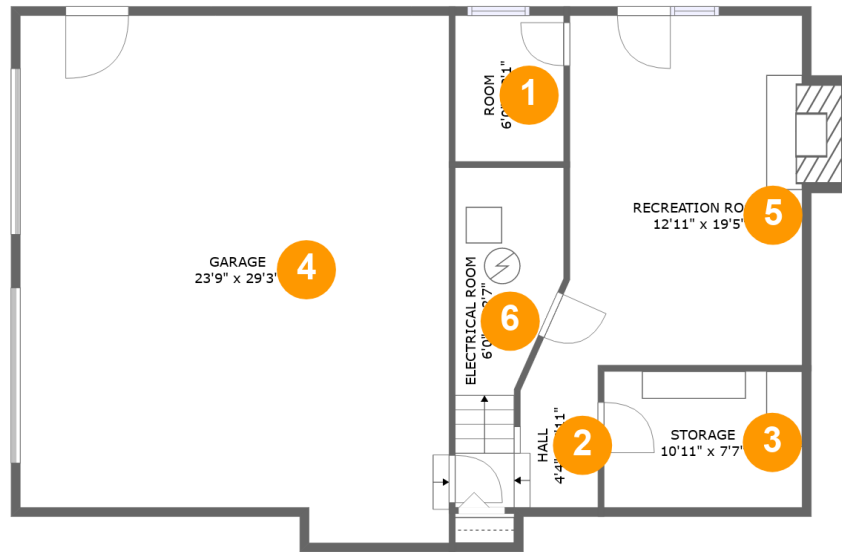


Property summary

1 Garages
 4 Bedrooms
 2 Bathrooms
 1 Half baths

3 Floors
 3,191 Gross living area sqft
 4,255 Total sqft

4642 Shrewsbury Court, Woodmont Manor, Cave Spring, Roanoke, Roanoke County, Virginia, United



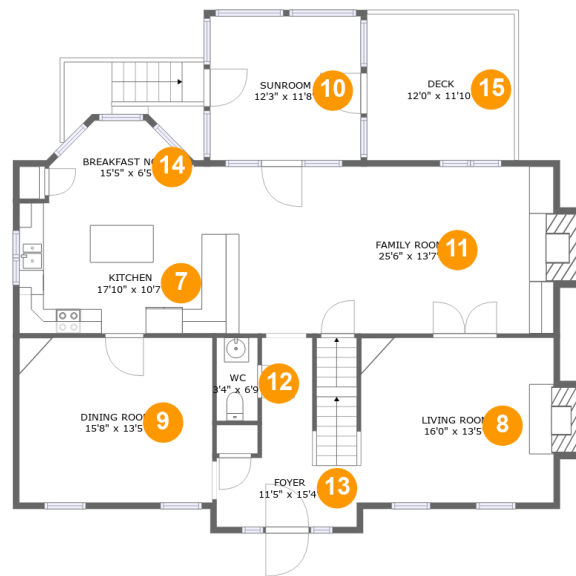
Room dimensions

Floor 1

Total sqft: 1292 Living area: 412

#		Dimensions	sqft	Counted as living area
1	Room	6'0" x 8'1"	49 sq. ft	Yes
2	Hall	4'4" x 7'11"	55 sq. ft	Yes
3	Storage	10'11" x 7'7"	83 sq. ft	No
4	Garage	23'9" x 29'3"	663 sq. ft	No
5	Recreation Room	12'11" x 19'5"	267 sq. ft	Yes
6	Room	6'0" x 12'7"	67 sq. ft	No

4642 Shrewsbury Court, Woodmont Manor, Cave Spring, Roanoke, Roanoke County, Virginia, United



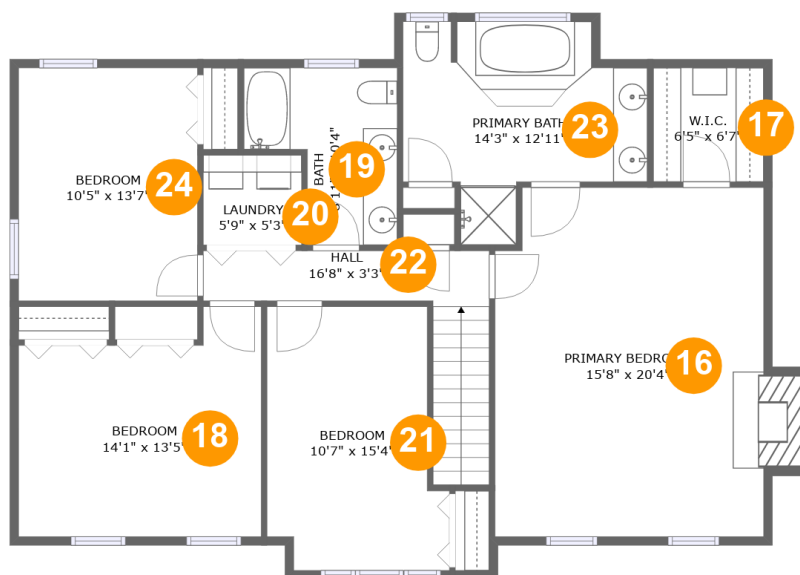
Room dimensions

Floor 2

Total sqft: 1639 Living area: 1469

#		Dimensions	sqft	Counted as living area
7	Kitchen	17'10" x 10'7"	189 sq. ft	Yes
8	Living Room	16'0" x 13'5"	223 sq. ft	Yes
9	Dining Room	15'8" x 13'5"	210 sq. ft	Yes
10	Room	12'3" x 11'8"	143 sq. ft	Yes
11	Living Room	25'6" x 13'7"	358 sq. ft	Yes
12	Bath	3'4" x 6'9"	22 sq. ft	Yes
13	Entry	11'5" x 15'4"	136 sq. ft	Yes
14	Nook	15'5" x 6'5"	75 sq. ft	Yes
15	Outdoor	12'0" x 11'10"	142 sq. ft	No

4642 Shrewsbury Court, Woodmont Manor, Cave Spring, Roanoke, Roanoke County, Virginia, United



Room dimensions

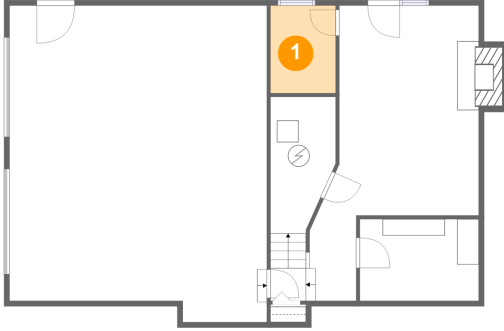
Floor 3

Total sqft: 1324 Living area: 1310

#		Dimensions	sqft	Counted as living area
16	Bedroom	15'8" x 20'4"	323 sq. ft	Yes
17	Cl	6'5" x 6'7"	43 sq. ft	Yes
18	Bedroom	14'1" x 13'5"	165 sq. ft	Yes
19	Bath	8'11" x 10'4"	71 sq. ft	Yes
20	Utility	5'9" x 5'3"	30 sq. ft	Yes
21	Bedroom	10'7" x 15'4"	146 sq. ft	Yes
22	Hall	16'8" x 3'3"	84 sq. ft	Yes
23	Bath	14'3" x 12'11"	135 sq. ft	Yes
24	Bedroom	10'5" x 13'7"	141 sq. ft	Yes

4642 Shrewsbury Court, Woodmont Manor, Cave Spring, Roanoke, Roanoke County, Virginia, United

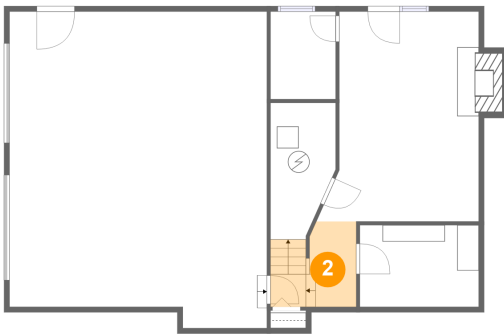
1 Floor 1 - Room



Dimensions: 6'0" x 8'1"
Area: 49 sq. ft
Counted as living area: Yes

Heated: Yes
Finished: Yes
Enclosed: Yes
Contiguous: Yes
Permitted: Yes
Wet space: No
Addition: No
Conversion: No

2 Floor 1 - Hall



Dimensions: 4'4" x 7'11"
Area: 55 sq. ft
Counted as living area: Yes

Heated: Yes
Finished: Yes
Enclosed: Yes
Contiguous: Yes
Permitted: Yes
Wet space: No
Addition: No
Conversion: No

4642 Shrewsbury Court, Woodmont Manor, Cave Spring, Roanoke, Roanoke County, Virginia, United

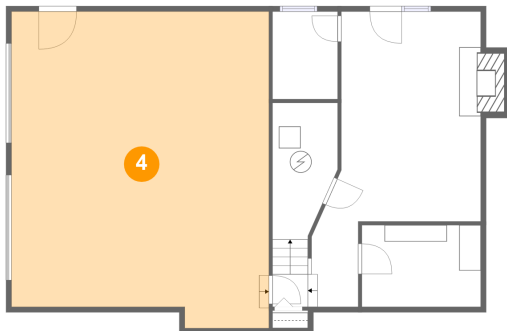
3 Floor 1 - Storage



Dimensions: 10'11" x 7'7"
Area: 83 sq. ft
Counted as living area: No

Heated: No
Finished: No
Enclosed: No
Contiguous: Yes
Permitted: Yes
Wet space: No
Addition: No
Conversion: No

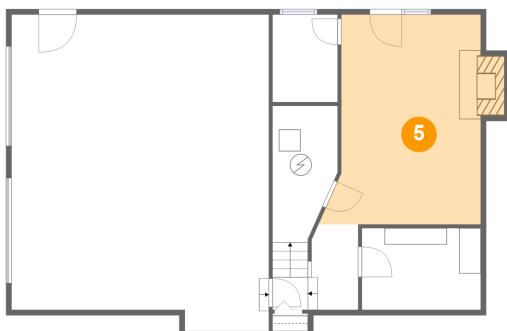
4 Floor 1 - Garage



Dimensions: 23'9" x 29'3"
Area: 663 sq. ft
Counted as living area: No

Heated: No
Finished: No
Enclosed: Yes
Contiguous: Yes
Permitted: Yes
Wet space: No
Addition: No
Conversion: No

5 Floor 1 - Recreation Room

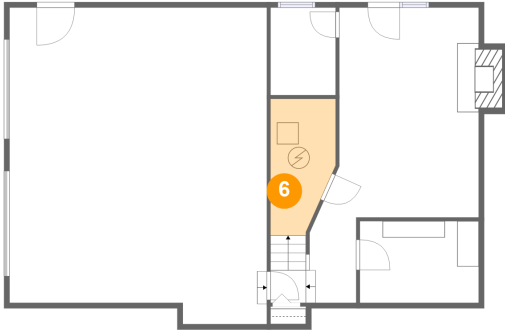


Dimensions: 12'11" x 19'5"
Area: 267 sq. ft
Counted as living area: Yes

Heated: Yes
Finished: Yes
Enclosed: Yes
Contiguous: Yes
Permitted: Yes
Wet space: No
Addition: No
Conversion: No

4642 Shrewsbury Court, Woodmont Manor, Cave Spring, Roanoke, Roanoke County, Virginia, United

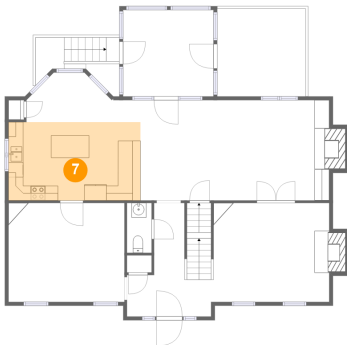
6 Floor 1 - Room



Dimensions: 6'0" x 12'7"
Area: 67 sq. ft
Counted as living area: No

Heated: No
Finished: No
Enclosed: Yes
Contiguous: Yes
Permitted: Yes
Wet space: No
Addition: No
Conversion: No

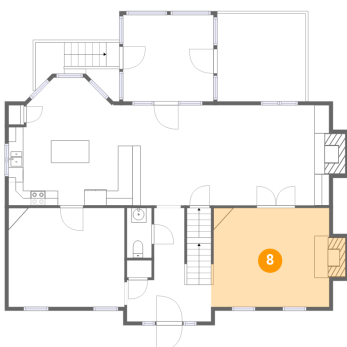
7 Floor 2 - Kitchen



Dimensions: 17'10" x 10'7"
Area: 189 sq. ft
Counted as living area: Yes

Heated: Yes
Finished: Yes
Enclosed: Yes
Contiguous: Yes
Permitted: Yes
Wet space: No
Addition: No
Conversion: No

8 Floor 2 - Living Room

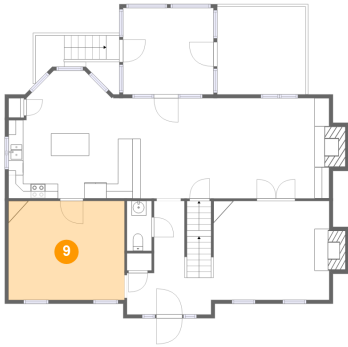


Dimensions: 16'0" x 13'5"
Area: 223 sq. ft
Counted as living area: Yes

Heated: Yes
Finished: Yes
Enclosed: Yes
Contiguous: Yes
Permitted: Yes
Wet space: No
Addition: No
Conversion: No

4642 Shrewsbury Court, Woodmont Manor, Cave Spring, Roanoke, Roanoke County, Virginia, United

9 Floor 2 - Dining Room



Dimensions: 15'8" x 13'5"
Area: 210 sq. ft
Counted as living area: Yes

Heated: Yes
Finished: Yes
Enclosed: Yes
Contiguous: Yes
Permitted: Yes
Wet space: No
Addition: No
Conversion: No

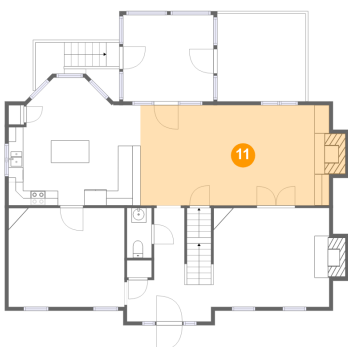
10 Floor 2 - Room



Dimensions: 12'3" x 11'8"
Area: 143 sq. ft
Counted as living area: Yes

Heated: Yes
Finished: Yes
Enclosed: Yes
Contiguous: Yes
Permitted: Yes
Wet space: No
Addition: No
Conversion: No

11 Floor 2 - Living Room

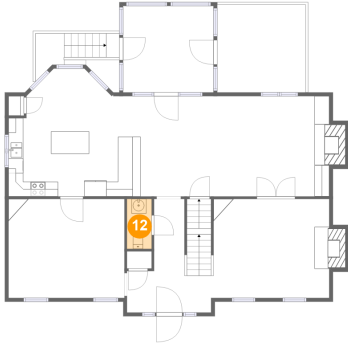


Dimensions: 25'6" x 13'7"
Area: 358 sq. ft
Counted as living area: Yes

Heated: Yes
Finished: Yes
Enclosed: Yes
Contiguous: Yes
Permitted: Yes
Wet space: No
Addition: No
Conversion: No

4642 Shrewsbury Court, Woodmont Manor, Cave Spring, Roanoke, Roanoke County, Virginia, United

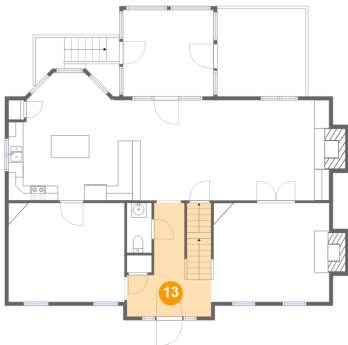
12 Floor 2 - Bath



Dimensions: 3'4" x 6'9"
Area: 22 sq. ft
Counted as living area: Yes

Heated: Yes
Finished: Yes
Enclosed: Yes
Contiguous: Yes
Permitted: Yes
Wet space: Yes
Addition: No
Conversion: No

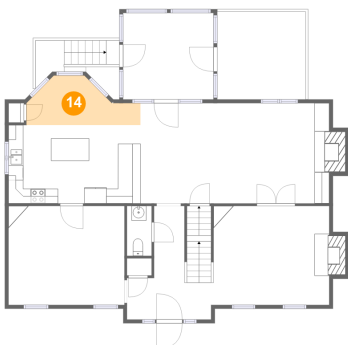
13 Floor 2 - Entry



Dimensions: 11'5" x 15'4"
Area: 136 sq. ft
Counted as living area: Yes

Heated: Yes
Finished: Yes
Enclosed: Yes
Contiguous: Yes
Permitted: Yes
Wet space: No
Addition: No
Conversion: No

14 Floor 2 - Nook

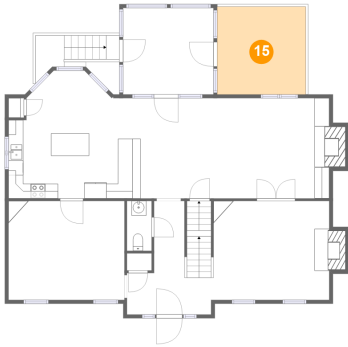


Dimensions: 15'5" x 6'5"
Area: 75 sq. ft
Counted as living area: Yes

Heated: Yes
Finished: Yes
Enclosed: Yes
Contiguous: Yes
Permitted: Yes
Wet space: No
Addition: No
Conversion: No

4642 Shrewsbury Court, Woodmont Manor, Cave Spring, Roanoke, Roanoke County, Virginia, United

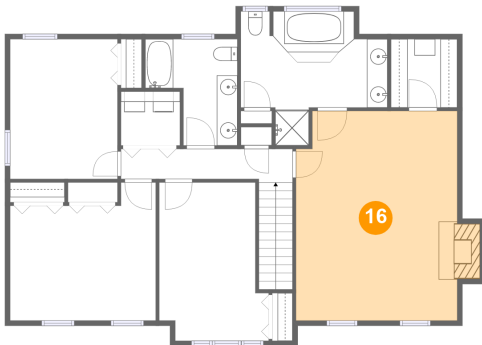
15 Floor 2 - Outdoor



Dimensions: 12'0" x 11'10"
Area: 142 sq. ft
Counted as living area: No

Heated: No
Finished: No
Enclosed: No
Contiguous: No
Permitted: Yes
Wet space: No
Addition: No
Conversion: No

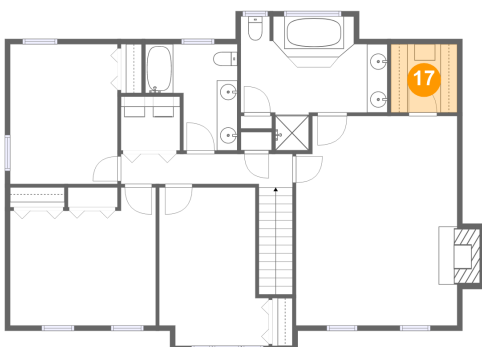
16 Floor 3 - Bedroom



Dimensions: 15'8" x 20'4"
Area: 323 sq. ft
Counted as living area: Yes

Heated: Yes
Finished: Yes
Enclosed: Yes
Contiguous: Yes
Permitted: Yes
Wet space: No
Addition: No
Conversion: No

17 Floor 3 - Cl

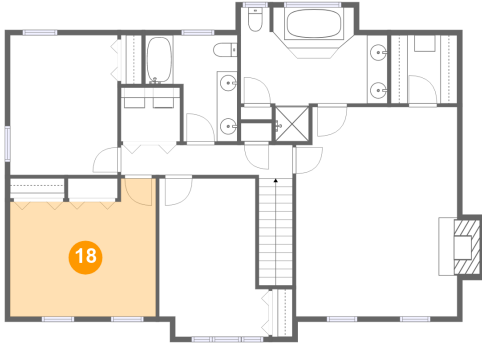


Dimensions: 6'5" x 6'7"
Area: 43 sq. ft
Counted as living area: Yes

Heated: Yes
Finished: Yes
Enclosed: Yes
Contiguous: Yes
Permitted: Yes
Wet space: No
Addition: No
Conversion: No

4642 Shrewsbury Court, Woodmont Manor, Cave Spring, Roanoke, Roanoke County, Virginia, United

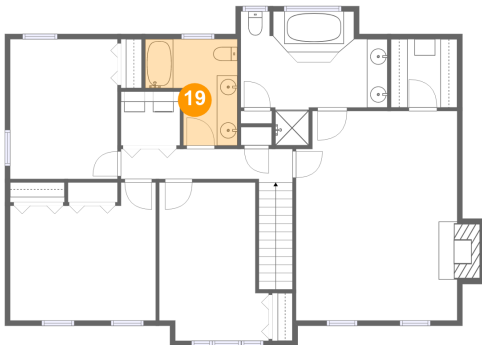
18 Floor 3 - Bedroom



Dimensions: 14'1" x 13'5"
Area: 165 sq. ft
Counted as living area: Yes

Heated: Yes
Finished: Yes
Enclosed: Yes
Contiguous: Yes
Permitted: Yes
Wet space: No
Addition: No
Conversion: No

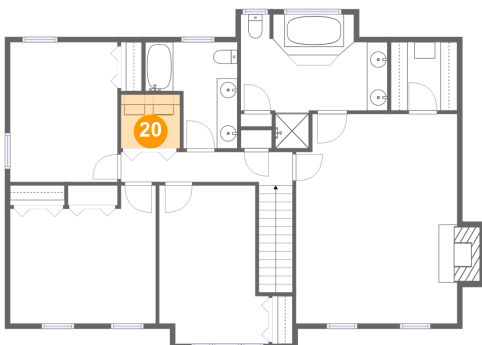
19 Floor 3 - Bath



Dimensions: 8'11" x 10'4"
Area: 71 sq. ft
Counted as living area: Yes

Heated: Yes
Finished: Yes
Enclosed: Yes
Contiguous: Yes
Permitted: Yes
Wet space: Yes
Addition: No
Conversion: No

20 Floor 3 - Utility

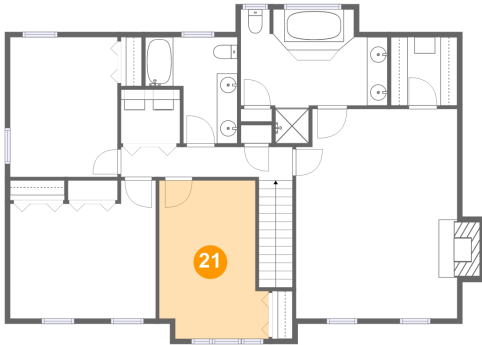


Dimensions: 5'9" x 5'3"
Area: 30 sq. ft
Counted as living area: Yes

Heated: Yes
Finished: Yes
Enclosed: Yes
Contiguous: Yes
Permitted: Yes
Wet space: No
Addition: No
Conversion: No

4642 Shrewsbury Court, Woodmont Manor, Cave Spring, Roanoke, Roanoke County, Virginia, United

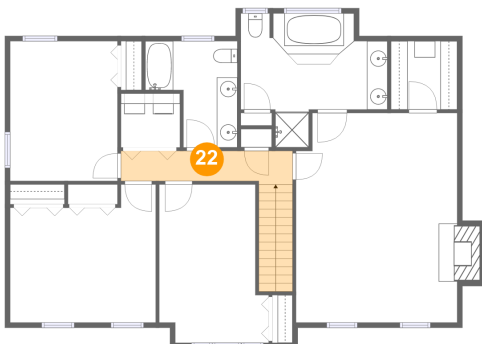
21 Floor 3 - Bedroom



Dimensions: 10'7" x 15'4"
Area: 146 sq. ft
Counted as living area: Yes

Heated: Yes
Finished: Yes
Enclosed: Yes
Contiguous: Yes
Permitted: Yes
Wet space: No
Addition: No
Conversion: No

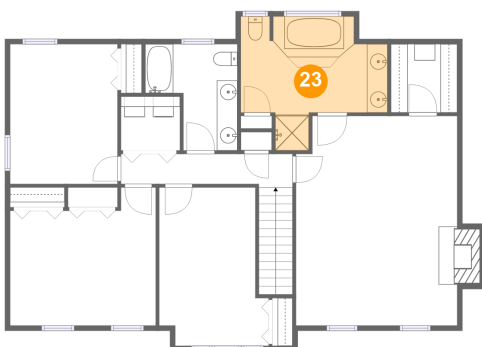
22 Floor 3 - Hall



Dimensions: 16'8" x 3'3"
Area: 84 sq. ft
Counted as living area: Yes

Heated: Yes
Finished: Yes
Enclosed: Yes
Contiguous: Yes
Permitted: Yes
Wet space: No
Addition: No
Conversion: No

23 Floor 3 - Bath

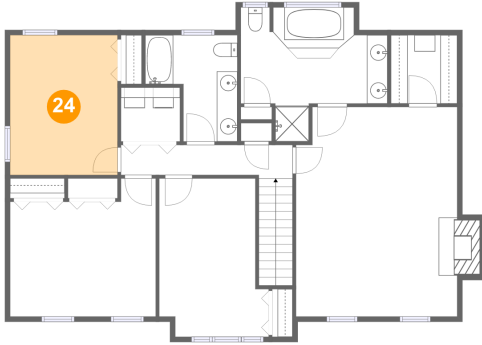


Dimensions: 14'3" x 12'11"
Area: 135 sq. ft
Counted as living area: Yes

Heated: Yes
Finished: Yes
Enclosed: Yes
Contiguous: Yes
Permitted: Yes
Wet space: Yes
Addition: No
Conversion: No

4642 Shrewsbury Court, Woodmont Manor, Cave Spring, Roanoke, Roanoke County, Virginia, United

24 Floor 3 - Bedroom



Dimensions: 10'5" x 13'7"
Area: 141 sq. ft
Counted as living area: Yes

Heated: Yes
Finished: Yes
Enclosed: Yes
Contiguous: Yes
Permitted: Yes
Wet space: No
Addition: No
Conversion: No