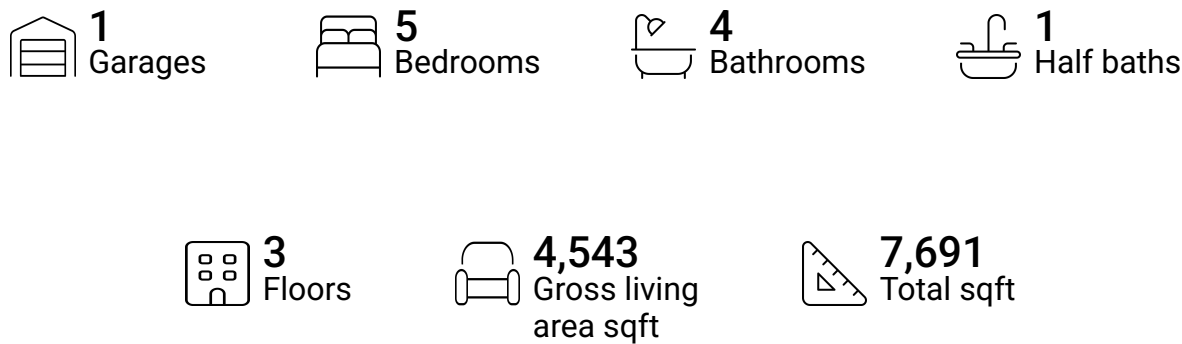


Home report

5225 Flintlock Road, Cave Spring, Roanoke, Roanoke County,
Virginia, United States, 24018

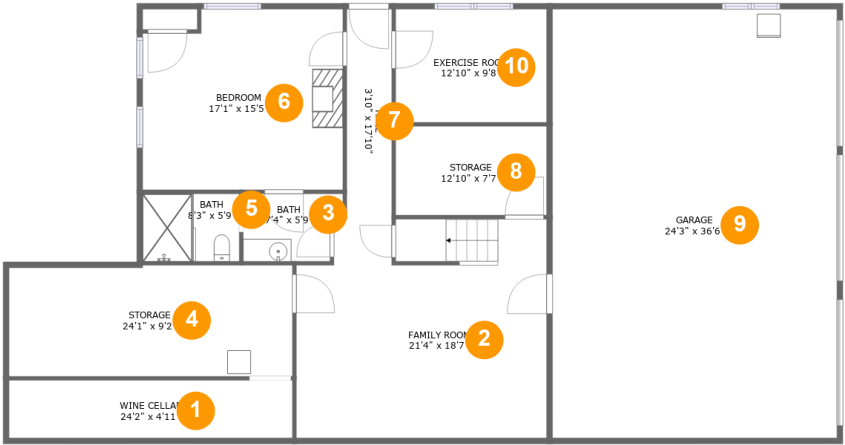


Property summary



Home report

5225 Flintlock Road, Cave Spring, Roanoke, Roanoke County,
Virginia, United States, 24018



Room dimensions

Floor 1 Total sqft: 2431 Living area: 1025

#		Dimensions	sqft	Counted as living area
1	Wine Cellar	24'2" x 4'11"	119 sq. ft	No
2	Family Room	21'4" x 18'7"	382 sq. ft	Yes
3	Bath	7'4" x 5'9"	45 sq. ft	Yes
4	Storage	24'1" x 9'2"	226 sq. ft	No
5	Bath	8'3" x 5'9"	47 sq. ft	Yes
6	Bedroom	17'1" x 15'5"	252 sq. ft	Yes
7	Hall	3'10" x 17'10"	69 sq. ft	Yes
8	Storage	12'10" x 7'7"	97 sq. ft	No
9	Garage	24'3" x 36'6"	884 sq. ft	No
10	Exercise Room	12'10" x 9'8"	124 sq. ft	Yes

Home report

5225 Flintlock Road, Cave Spring, Roanoke, Roanoke County,
Virginia, United States, 24018



Room dimensions

Floor 2 Total sqft: 3163 Living area: 2294

#		Dimensions	sqft	Counted as living area
11	Pantry	6'9" x 10'3"	70 sq. ft	Yes
12	Laundry	6'7" x 8'2"	53 sq. ft	Yes
13	Patio	6'7" x 3'9"	25 sq. ft	No
14	Primary Bedroom	18'9" x 14'6"	272 sq. ft	Yes
15	Sitting Room	15'4" x 8'0"	123 sq. ft	Yes
16	Primary Bath	17'0" x 13'0"	171 sq. ft	Yes
17	Hall	5'0" x 13'2"	50 sq. ft	Yes
18	W.I.C.	15'6" x 9'7"	140 sq. ft	Yes
19	Foyer	22'10" x 10'2"	231 sq. ft	Yes
20	Living Room	20'10" x 17'7"	366 sq. ft	Yes
21	WC	5'1" x 8'2"	41 sq. ft	Yes

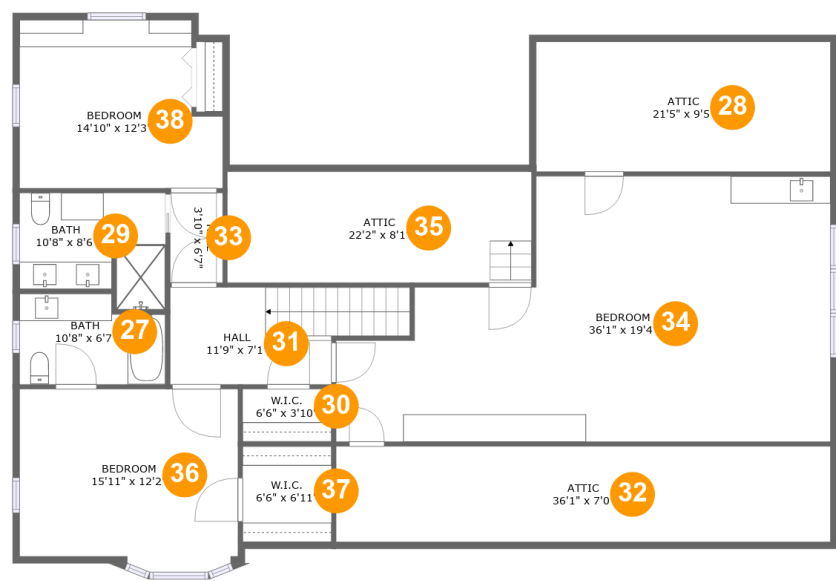
Home report

5225 Flintlock Road, Cave Spring, Roanoke, Roanoke County,
Virginia, United States, 24018

#		Dimensions	sqft	Counted as living area
22	WC	5'10" x 3'2"	19 sq. ft	Yes
23	Patio	48'6" x 32'0"	722 sq. ft	No
24	Dining Area	15'4" x 14'0"	213 sq. ft	Yes
25	Porch	13'9" x 8'4"	117 sq. ft	No
26	Kitchen	20'10" x 14'6"	294 sq. ft	Yes

Home report

5225 Flintlock Road, Cave Spring, Roanoke, Roanoke County,
Virginia, United States, 24018



Room dimensions

Floor 3 Total sqft: 2097 Living area: 1224

#		Dimensions	sqft	Counted as living area
27	Bath	10'8" x 6'7"	65 sq. ft	Yes
28	Attic	21'5" x 9'5"	203 sq. ft	No
29	Bath	10'8" x 8'6"	79 sq. ft	Yes
30	W.I.C.	6'6" x 3'10"	25 sq. ft	Yes
31	Hall	11'9" x 7'1"	104 sq. ft	Yes
32	Attic	36'1" x 7'0"	252 sq. ft	No
33	Hall	3'10" x 6'7"	25 sq. ft	Yes
34	Bedroom	36'1" x 19'4"	406 sq. ft	Yes
35	Attic	22'2" x 8'1"	180 sq. ft	No
36	Bedroom	15'11" x 12'2"	195 sq. ft	Yes
37	W.I.C.	6'6" x 6'11"	45 sq. ft	Yes

Home report

5225 Flintlock Road, Cave Spring, Roanoke, Roanoke County,
Virginia, United States, 24018

#		Dimensions	sqft	Counted as living area
38	Bedroom	14'10" x 12'3"	166 sq. ft	Yes

5225 Flintlock Road, Cave Spring, Roanoke, Roanoke County,
Virginia, United States, 24018

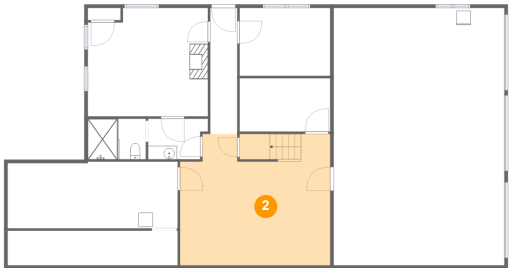
1 Floor 1 - Wine Cellar



Dimensions: 24'2" x 4'11"
Area: 119 sq. ft
Counted as living area: No

Heated: No
Finished: No
Enclosed: Yes
Contiguous: Yes
Permitted: Yes
Wet space: No
Addition: No
Conversion: No

2 Floor 1 - Family Room

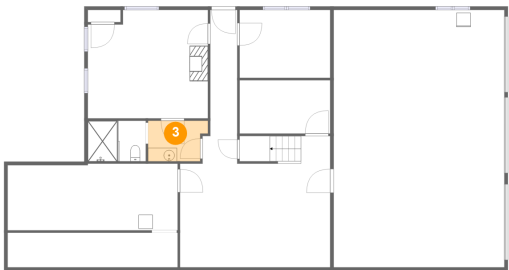


Dimensions: 21'4" x 18'7"
Area: 382 sq. ft
Counted as living area: Yes

Heated: Yes
Finished: Yes
Enclosed: Yes
Contiguous: Yes
Permitted: Yes
Wet space: No
Addition: No
Conversion: No

5225 Flintlock Road, Cave Spring, Roanoke, Roanoke County,
Virginia, United States, 24018

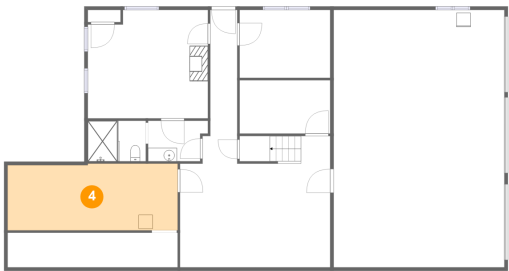
3 Floor 1 - Bath



Dimensions: 7'4" x 5'9"
Area: 45 sq. ft
Counted as living area: Yes

Heated: Yes
Finished: Yes
Enclosed: Yes
Contiguous: Yes
Permitted: Yes
Wet space: Yes
Addition: No
Conversion: No

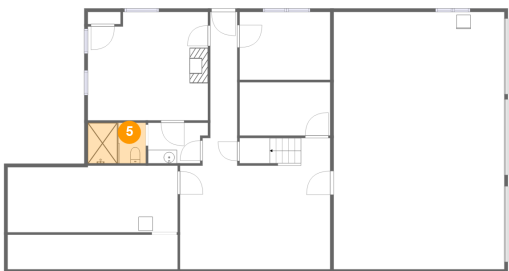
4 Floor 1 - Storage



Dimensions: 24'1" x 9'2"
Area: 226 sq. ft
Counted as living area: No

Heated: No
Finished: No
Enclosed: No
Contiguous: Yes
Permitted: Yes
Wet space: No
Addition: No
Conversion: No

5 Floor 1 - Bath



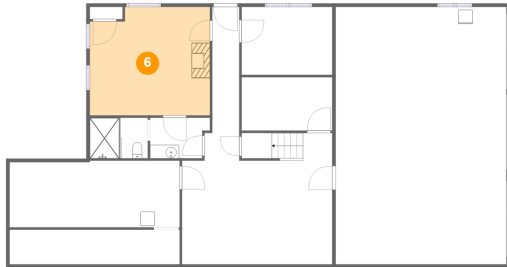
Dimensions: 8'3" x 5'9"
Area: 47 sq. ft
Counted as living area: Yes

Heated: Yes
Finished: Yes
Enclosed: Yes
Contiguous: Yes
Permitted: Yes
Wet space: Yes
Addition: No
Conversion: No

Home report

5225 Flintlock Road, Cave Spring, Roanoke, Roanoke County,
Virginia, United States, 24018

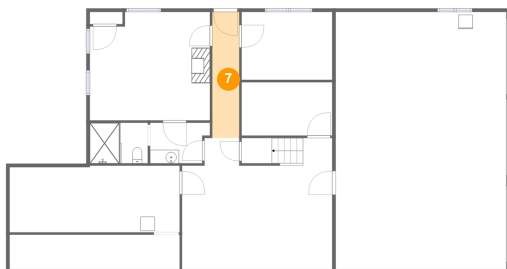
6 Floor 1 - Bedroom



Dimensions: 17'1" x 15'5"
Area: 252 sq. ft
Counted as living area: Yes

Heated: Yes
Finished: Yes
Enclosed: Yes
Contiguous: Yes
Permitted: Yes
Wet space: No
Addition: No
Conversion: No

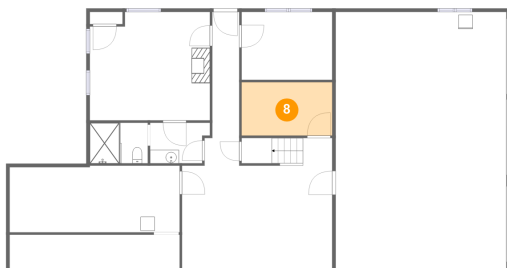
7 Floor 1 - Hall



Dimensions: 3'10" x 17'10"
Area: 69 sq. ft
Counted as living area: Yes

Heated: Yes
Finished: Yes
Enclosed: Yes
Contiguous: Yes
Permitted: Yes
Wet space: No
Addition: No
Conversion: No

8 Floor 1 - Storage



Dimensions: 12'10" x 7'7"
Area: 97 sq. ft
Counted as living area: No

Heated: No
Finished: No
Enclosed: No
Contiguous: Yes
Permitted: Yes
Wet space: No
Addition: No
Conversion: No

Home report

5225 Flintlock Road, Cave Spring, Roanoke, Roanoke County,
Virginia, United States, 24018

9 Floor 1 - Garage



Dimensions: 24'3" x 36'6"
Area: 884 sq. ft
Counted as living area: No

Heated: No
Finished: No
Enclosed: Yes
Contiguous: Yes
Permitted: Yes
Wet space: No
Addition: No
Conversion: No

10 Floor 1 - Exercise Room



Dimensions: 12'10" x 9'8"
Area: 124 sq. ft
Counted as living area: Yes

Heated: Yes
Finished: Yes
Enclosed: Yes
Contiguous: Yes
Permitted: Yes
Wet space: No
Addition: No
Conversion: No

11 Floor 2 - Pantry



Dimensions: 6'9" x 10'3"
Area: 70 sq. ft
Counted as living area: Yes

Heated: Yes
Finished: Yes
Enclosed: Yes
Contiguous: Yes
Permitted: Yes
Wet space: No
Addition: No
Conversion: No

5225 Flintlock Road, Cave Spring, Roanoke, Roanoke County,
Virginia, United States, 24018

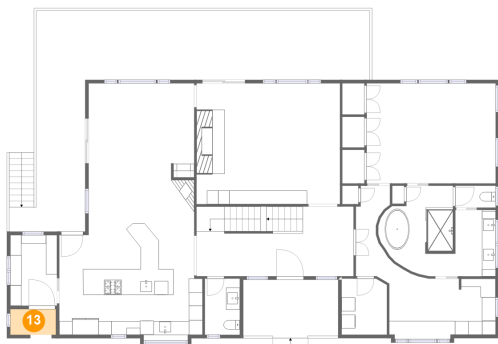
12 Floor 2 - Laundry



Dimensions: 6'7" x 8'2"
Area: 53 sq. ft
Counted as living area: Yes

Heated: Yes
Finished: Yes
Enclosed: Yes
Contiguous: Yes
Permitted: Yes
Wet space: No
Addition: No
Conversion: No

13 Floor 2 - Patio



Dimensions: 6'7" x 3'9"
Area: 25 sq. ft
Counted as living area: No

Heated: No
Finished: Yes
Enclosed: No
Contiguous: Yes
Permitted: Yes
Wet space: No
Addition: No
Conversion: No

14 Floor 2 - Primary Bedroom



Dimensions: 18'9" x 14'6"
Area: 272 sq. ft
Counted as living area: Yes

Heated: Yes
Finished: Yes
Enclosed: Yes
Contiguous: Yes
Permitted: Yes
Wet space: No
Addition: No
Conversion: No

Home report

5225 Flintlock Road, Cave Spring, Roanoke, Roanoke County,
Virginia, United States, 24018

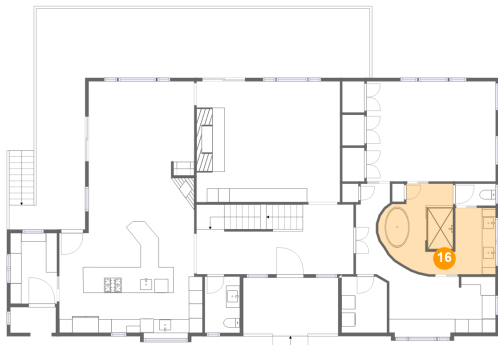
15 Floor 2 - Sitting Room



Dimensions: 15'4" x 8'0"
Area: 123 sq. ft
Counted as living area: Yes

Heated: Yes
Finished: Yes
Enclosed: Yes
Contiguous: Yes
Permitted: Yes
Wet space: No
Addition: No
Conversion: No

16 Floor 2 - Primary Bath



Dimensions: 17'0" x 13'0"
Area: 171 sq. ft
Counted as living area: Yes

Heated: Yes
Finished: Yes
Enclosed: Yes
Contiguous: Yes
Permitted: Yes
Wet space: Yes
Addition: No
Conversion: No

17 Floor 2 - Hall



Dimensions: 5'0" x 13'2"
Area: 50 sq. ft
Counted as living area: Yes

Heated: Yes
Finished: Yes
Enclosed: Yes
Contiguous: Yes
Permitted: Yes
Wet space: No
Addition: No
Conversion: No

Home report

5225 Flintlock Road, Cave Spring, Roanoke, Roanoke County,
Virginia, United States, 24018

18 Floor 2 - W.I.C.



Dimensions: 15'6" x 9'7"
Area: 140 sq. ft
Counted as living area: Yes

Heated: Yes
Finished: Yes
Enclosed: Yes
Contiguous: Yes
Permitted: Yes
Wet space: No
Addition: No
Conversion: No

19 Floor 2 - Foyer



Dimensions: 22'10" x 10'2"
Area: 231 sq. ft
Counted as living area: Yes

Heated: Yes
Finished: Yes
Enclosed: Yes
Contiguous: Yes
Permitted: Yes
Wet space: No
Addition: No
Conversion: No

20 Floor 2 - Living Room



Dimensions: 20'10" x 17'7"
Area: 366 sq. ft
Counted as living area: Yes

Heated: Yes
Finished: Yes
Enclosed: Yes
Contiguous: Yes
Permitted: Yes
Wet space: No
Addition: No
Conversion: No

Home report

5225 Flintlock Road, Cave Spring, Roanoke, Roanoke County,
Virginia, United States, 24018

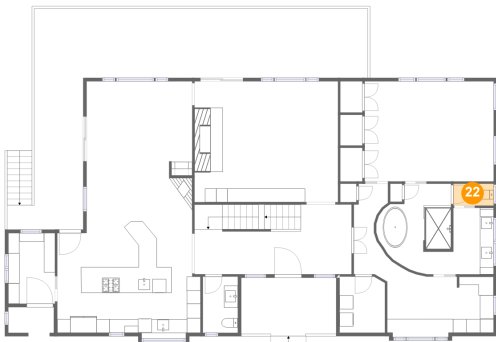
21 Floor 2 - WC



Dimensions: 5'1" x 8'2"
Area: 41 sq. ft
Counted as living area: Yes

Heated: Yes
Finished: Yes
Enclosed: Yes
Contiguous: Yes
Permitted: Yes
Wet space: Yes
Addition: No
Conversion: No

22 Floor 2 - WC



Dimensions: 5'10" x 3'2"
Area: 19 sq. ft
Counted as living area: Yes

Heated: Yes
Finished: Yes
Enclosed: Yes
Contiguous: Yes
Permitted: Yes
Wet space: Yes
Addition: No
Conversion: No

23 Floor 2 - Patio



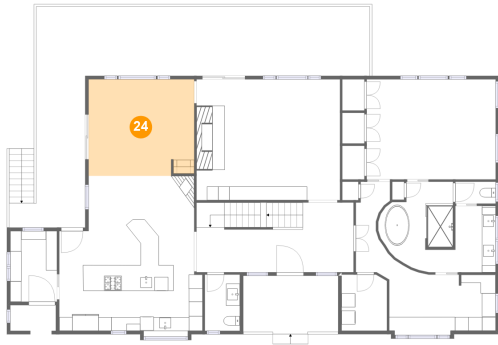
Dimensions: 48'6" x 32'0"
Area: 722 sq. ft
Counted as living area: No

Heated: No
Finished: Yes
Enclosed: No
Contiguous: Yes
Permitted: Yes
Wet space: No
Addition: No
Conversion: No

Home report

5225 Flintlock Road, Cave Spring, Roanoke, Roanoke County,
Virginia, United States, 24018

24 Floor 2 - Dining Area



Dimensions: 15'4" x 14'0"
Area: 213 sq. ft
Counted as living area: Yes

Heated: Yes
Finished: Yes
Enclosed: Yes
Contiguous: Yes
Permitted: Yes
Wet space: No
Addition: No
Conversion: No

25 Floor 2 - Porch



Dimensions: 13'9" x 8'4"
Area: 117 sq. ft
Counted as living area: No

Heated: No
Finished: Yes
Enclosed: No
Contiguous: Yes
Permitted: Yes
Wet space: No
Addition: No
Conversion: No

26 Floor 2 - Kitchen

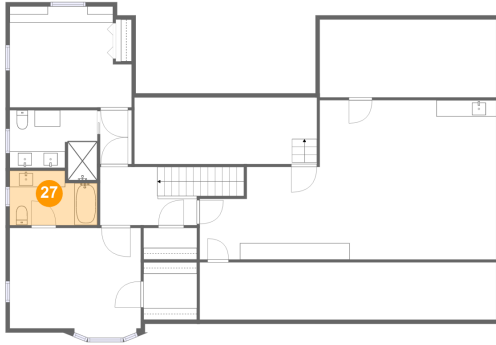


Dimensions: 20'10" x 14'6"
Area: 294 sq. ft
Counted as living area: Yes

Heated: Yes
Finished: Yes
Enclosed: Yes
Contiguous: Yes
Permitted: Yes
Wet space: No
Addition: No
Conversion: No

5225 Flintlock Road, Cave Spring, Roanoke, Roanoke County,
Virginia, United States, 24018

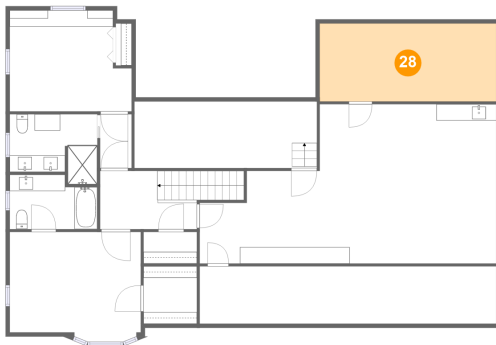
27 Floor 3 - Bath



Dimensions: 10'8" x 6'7"
Area: 65 sq. ft
Counted as living area: Yes

Heated: Yes
Finished: Yes
Enclosed: Yes
Contiguous: Yes
Permitted: Yes
Wet space: Yes
Addition: No
Conversion: No

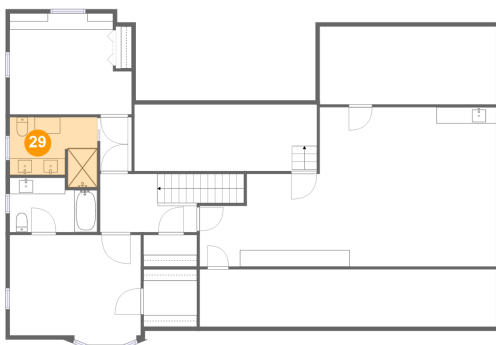
28 Floor 3 - Attic



Dimensions: 21'5" x 9'5"
Area: 203 sq. ft
Counted as living area: No

Heated: No
Finished: No
Enclosed: Yes
Contiguous: Yes
Permitted: Yes
Wet space: No
Addition: No
Conversion: No

29 Floor 3 - Bath



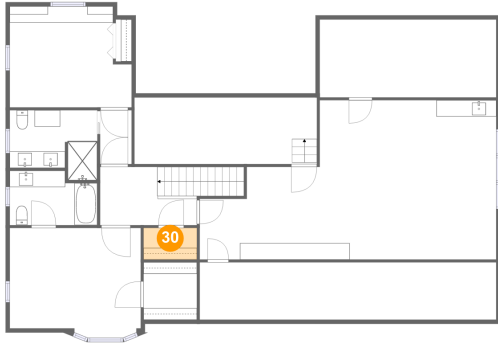
Dimensions: 10'8" x 8'6"
Area: 79 sq. ft
Counted as living area: Yes

Heated: Yes
Finished: Yes
Enclosed: Yes
Contiguous: Yes
Permitted: Yes
Wet space: Yes
Addition: No
Conversion: No

Home report

5225 Flintlock Road, Cave Spring, Roanoke, Roanoke County,
Virginia, United States, 24018

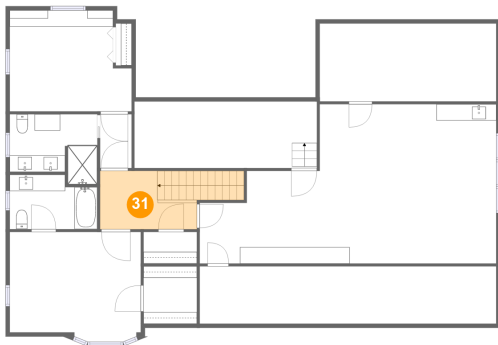
30 Floor 3 - W.I.C.



Dimensions: 6'6" x 3'10"
Area: 25 sq. ft
Counted as living area: Yes

Heated: Yes
Finished: Yes
Enclosed: Yes
Contiguous: Yes
Permitted: Yes
Wet space: No
Addition: No
Conversion: No

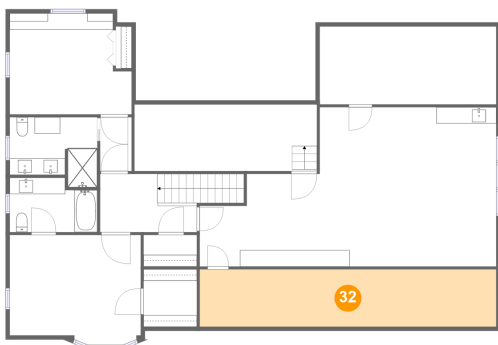
31 Floor 3 - Hall



Dimensions: 11'9" x 7'1"
Area: 104 sq. ft
Counted as living area: Yes

Heated: Yes
Finished: Yes
Enclosed: Yes
Contiguous: Yes
Permitted: Yes
Wet space: No
Addition: No
Conversion: No

32 Floor 3 - Attic



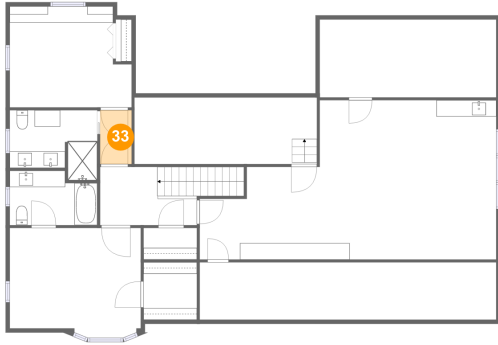
Dimensions: 36'1" x 7'0"
Area: 252 sq. ft
Counted as living area: No

Heated: No
Finished: No
Enclosed: Yes
Contiguous: Yes
Permitted: Yes
Wet space: No
Addition: No
Conversion: No

Home report

5225 Flintlock Road, Cave Spring, Roanoke, Roanoke County,
Virginia, United States, 24018

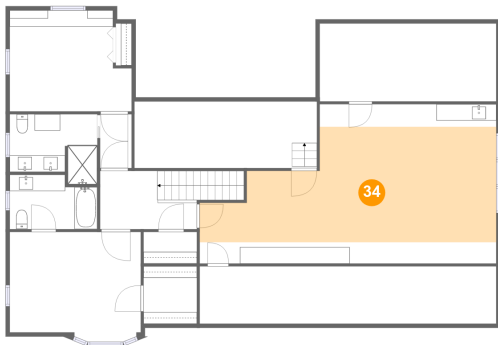
33 Floor 3 - Hall



Dimensions: 3'10" x 6'7"
Area: 25 sq. ft
Counted as living area: Yes

Heated: Yes
Finished: Yes
Enclosed: Yes
Contiguous: Yes
Permitted: Yes
Wet space: No
Addition: No
Conversion: No

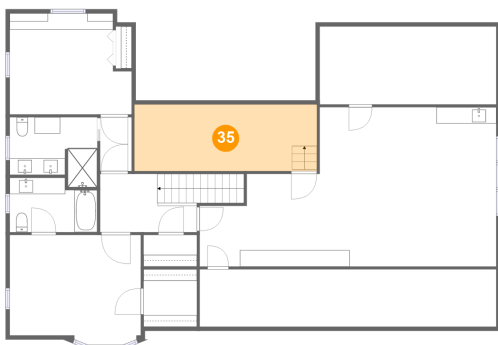
34 Floor 3 - Bedroom



Dimensions: 36'1" x 19'4"
Area: 406 sq. ft
Counted as living area: Yes

Heated: Yes
Finished: Yes
Enclosed: Yes
Contiguous: Yes
Permitted: Yes
Wet space: No
Addition: No
Conversion: No

35 Floor 3 - Attic



Dimensions: 22'2" x 8'1"
Area: 180 sq. ft
Counted as living area: No

Heated: No
Finished: No
Enclosed: Yes
Contiguous: Yes
Permitted: Yes
Wet space: No
Addition: No
Conversion: No

Home report

5225 Flintlock Road, Cave Spring, Roanoke, Roanoke County,
Virginia, United States, 24018

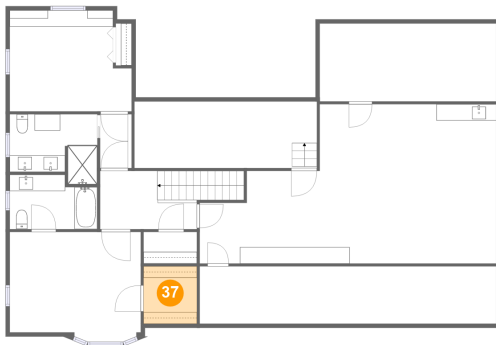
36 Floor 3 - Bedroom



Dimensions: 15'11" x 12'2"
Area: 195 sq. ft
Counted as living area: Yes

Heated: Yes
Finished: Yes
Enclosed: Yes
Contiguous: Yes
Permitted: Yes
Wet space: No
Addition: No
Conversion: No

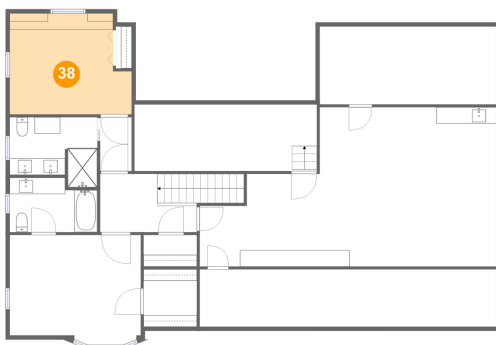
37 Floor 3 - W.I.C.



Dimensions: 6'6" x 6'11"
Area: 45 sq. ft
Counted as living area: Yes

Heated: Yes
Finished: Yes
Enclosed: Yes
Contiguous: Yes
Permitted: Yes
Wet space: No
Addition: No
Conversion: No

38 Floor 3 - Bedroom



Dimensions: 14'10" x 12'3"
Area: 166 sq. ft
Counted as living area: Yes

Heated: Yes
Finished: Yes
Enclosed: Yes
Contiguous: Yes
Permitted: Yes
Wet space: No
Addition: No
Conversion: No