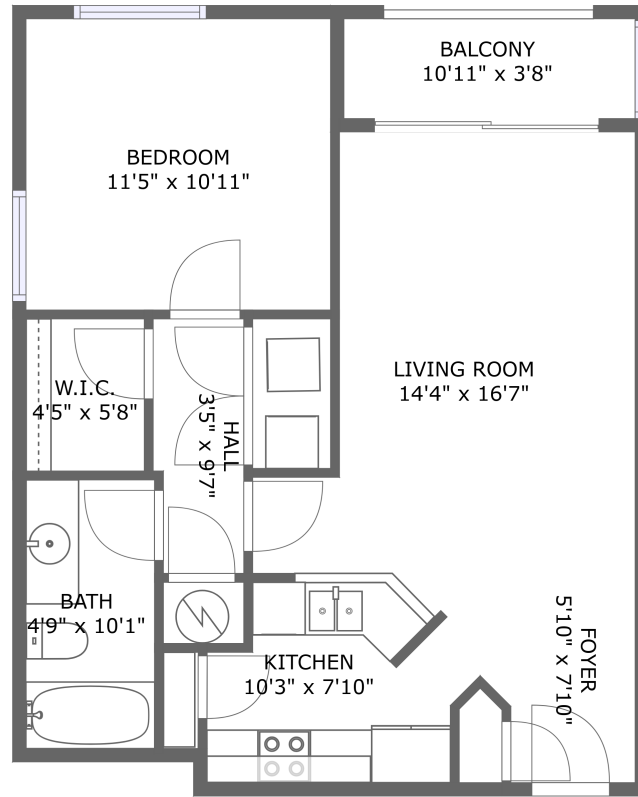



501 Knights Run Avenue, Harbour Island, Tampa, Hillsborough County, Florida, United States, 33602,



FLOOR 1

Property summary

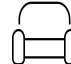
 **0** Garages


 **1** Bedrooms

 **1** Bathrooms

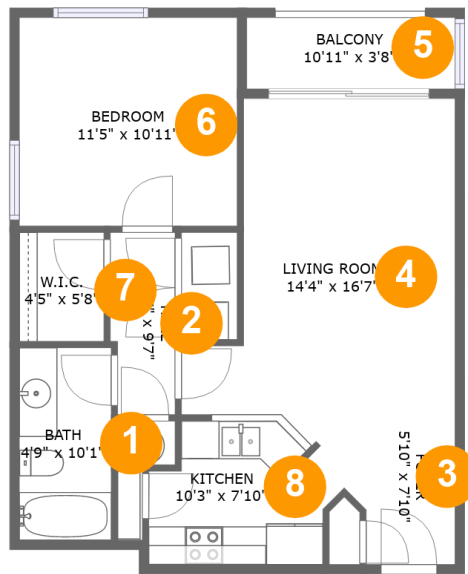
 **0** Half baths

 **1** Floors

 **598**
Gross living
area sqft

 **639**
Total sqft

501 Knights Run Avenue, Harbour Island, Tampa, Hillsborough County, Florida, United States, 33602,



Room dimensions

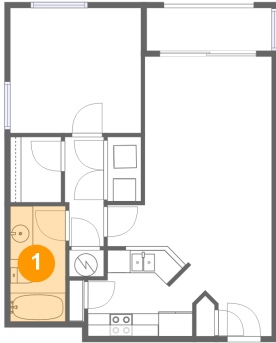
Floor 1

Total sqft: 639 Living area: 598

| # | | Dimensions | sqft | Counted as living area |
|---|-------------|----------------|------------|------------------------|
| 1 | Bath | 4'9" x 10'1" | 49 sq. ft | Yes |
| 2 | Hall | 3'5" x 9'7" | 31 sq. ft | Yes |
| 3 | Foyer | 5'10" x 7'10" | 42 sq. ft | Yes |
| 4 | Living Room | 14'4" x 16'7" | 195 sq. ft | Yes |
| 5 | Balcony | 10'11" x 3'8" | 41 sq. ft | No |
| 6 | Bedroom | 11'5" x 10'11" | 125 sq. ft | Yes |
| 7 | W.I.C. | 4'5" x 5'8" | 25 sq. ft | Yes |
| 8 | Kitchen | 10'3" x 7'10" | 71 sq. ft | Yes |

501 Knights Run Avenue, Harbour Island, Tampa, Hillsborough County, Florida, United States, 33602,

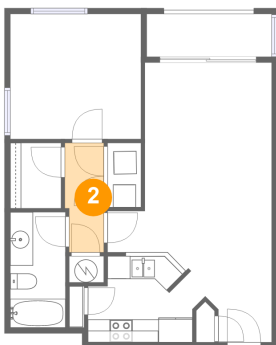
1 Floor 1 - Bath



Dimensions: 4'9" x 10'1"
Area: 49 sq. ft
Counted as living area: Yes

Heated: Yes
Finished: Yes
Enclosed: Yes
Contiguous: Yes
Permitted: Yes
Wet space: Yes
Addition: No
Conversion: No

2 Floor 1 - Hall

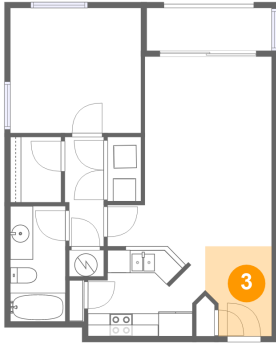


Dimensions: 3'5" x 9'7"
Area: 31 sq. ft
Counted as living area: Yes

Heated: Yes
Finished: Yes
Enclosed: Yes
Contiguous: Yes
Permitted: Yes
Wet space: No
Addition: No
Conversion: No

501 Knights Run Avenue, Harbour Island, Tampa,
Hillsborough County, Florida, United States, 33602,

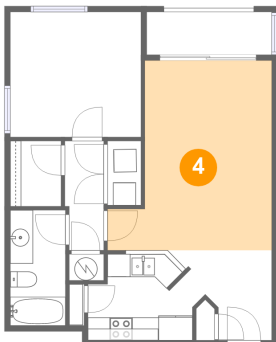
3 Floor 1 - Foyer



Dimensions: 5'10" x 7'10"
Area: 42 sq. ft
Counted as living area: Yes

Heated: Yes
Finished: Yes
Enclosed: Yes
Contiguous: Yes
Permitted: Yes
Wet space: No
Addition: No
Conversion: No

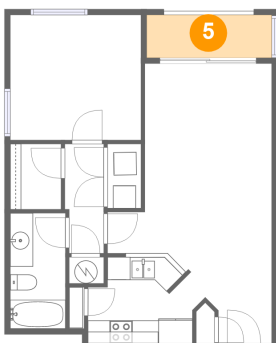
4 Floor 1 - Living Room



Dimensions: 14'4" x 16'7"
Area: 195 sq. ft
Counted as living area: Yes

Heated: Yes
Finished: Yes
Enclosed: Yes
Contiguous: Yes
Permitted: Yes
Wet space: No
Addition: No
Conversion: No

5 Floor 1 - Balcony

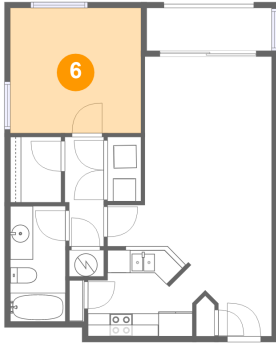


Dimensions: 10'11" x 3'8"
Area: 41 sq. ft
Counted as living area: No

Heated: No
Finished: Yes
Enclosed: No
Contiguous: Yes
Permitted: Yes
Wet space: No
Addition: No
Conversion: No

**501 Knights Run Avenue, Harbour Island, Tampa,
Hillsborough County, Florida, United States, 33602,**

6 Floor 1 - Bedroom



Dimensions: 11'5" x 10'11"
Area: 125 sq. ft
Counted as living area: Yes

Heated: Yes
Finished: Yes
Enclosed: Yes
Contiguous: Yes
Permitted: Yes
Wet space: No
Addition: No
Conversion: No

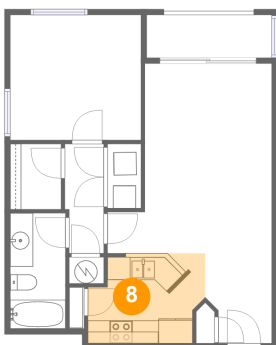
7 Floor 1 - W.I.C.



Dimensions: 4'5" x 5'8"
Area: 25 sq. ft
Counted as living area: Yes

Heated: Yes
Finished: Yes
Enclosed: Yes
Contiguous: Yes
Permitted: Yes
Wet space: No
Addition: No
Conversion: No

8 Floor 1 - Kitchen



Dimensions: 10'3" x 7'10"
Area: 71 sq. ft
Counted as living area: Yes

Heated: Yes
Finished: Yes
Enclosed: Yes
Contiguous: Yes
Permitted: Yes
Wet space: No
Addition: No
Conversion: No