



Home report


439 Pleasant Hill Rd,Leechburg,PA,US




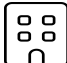
Property summary


**0** Garages


**4** Bedrooms

**2** Bathrooms

**1** Half baths

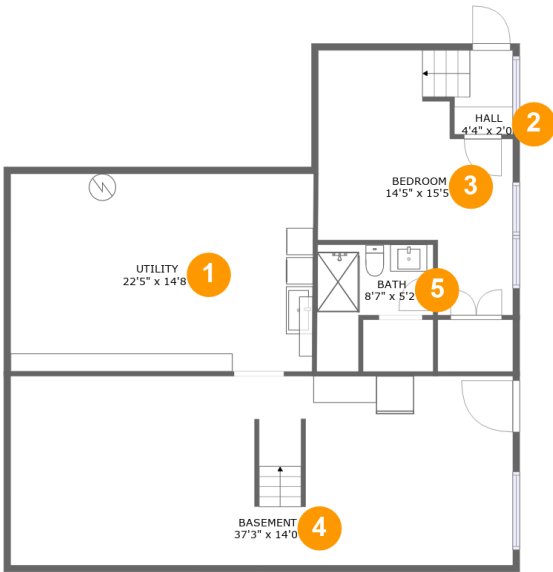
**3** Floors

**2,611** Gross living area sqft

**4,242** Total sqft

Home report

439 Pleasant Hill Rd, Leechburg, PA, US



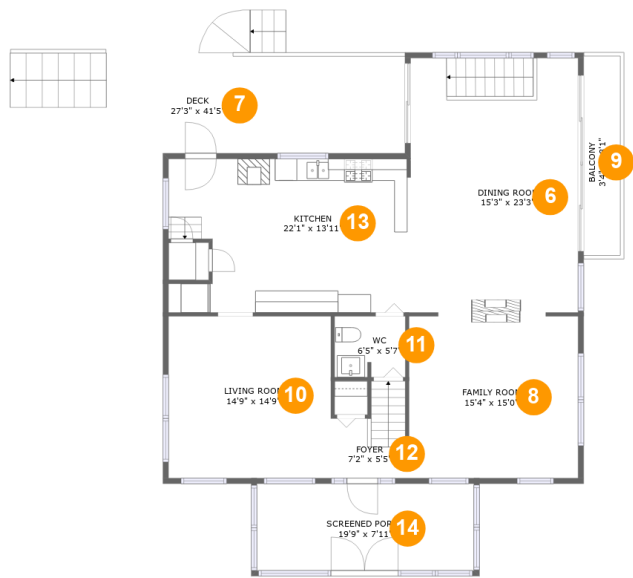
Room dimensions

Floor 1 Total sqft: 1291 Living area: 379

#		Dimensions	sqft	Counted as living area
1	Utility	22'5" x 14'8"	329 sq. ft	No
2	Hall	4'4" x 2'0"	35 sq. ft	Yes
3	Bedroom	14'5" x 15'5"	196 sq. ft	Yes
4	Basement	37'3" x 14'0"	523 sq. ft	No
5	Bath	8'7" x 5'2"	58 sq. ft	Yes

Home report

439 Pleasant Hill Rd,Leechburg,PA,US



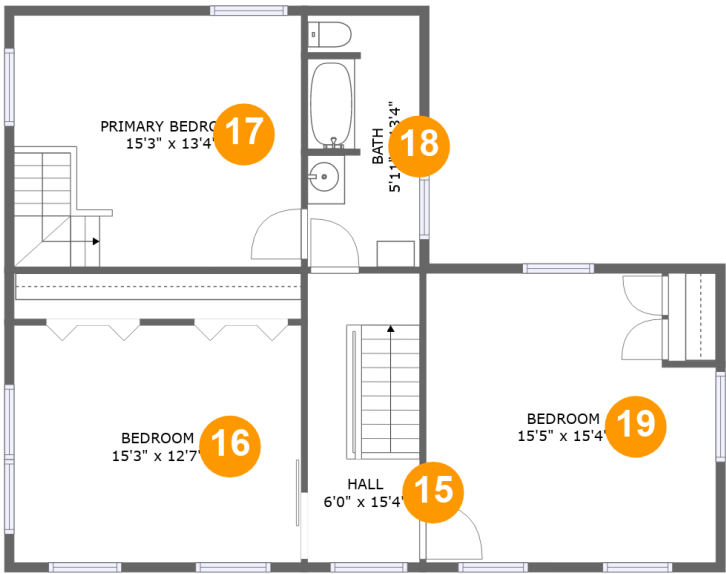
Room dimensions

Floor 2 Total sqft: 2017 Living area: 1298

#		Dimensions	sqft	Counted as living area
6	Dining Room	15'3" x 23'3"	353 sq. ft	Yes
7	Deck	27'3" x 41'5"	485 sq. ft	No
8	Family Room	15'4" x 15'0"	229 sq. ft	Yes
9	Balcony	3'4" x 18'1"	61 sq. ft	No
10	Living Room	14'9" x 14'9"	217 sq. ft	Yes
11	WC	6'5" x 5'7"	35 sq. ft	Yes
12	Foyer	7'2" x 5'5"	49 sq. ft	Yes
13	Kitchen	22'1" x 13'11"	292 sq. ft	Yes
14	Screened Porch	19'9" x 7'11"	156 sq. ft	No

Home report

439 Pleasant Hill Rd,Leechburg,PA,US

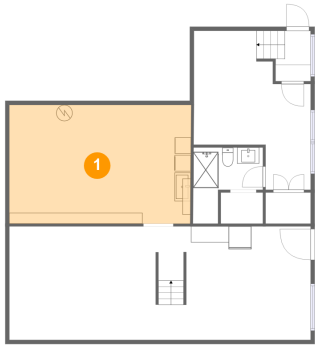


Room dimensions

Floor 3 Total sqft: 934 Living area: 934

#		Dimensions	sqft	Counted as living area
15	Hall	6'0" x 15'4"	91 sq. ft	Yes
16	Bedroom	15'3" x 12'7"	192 sq. ft	Yes
17	Primary Bedroom	15'3" x 13'4"	204 sq. ft	Yes
18	Bath	5'11" x 13'4"	78 sq. ft	Yes
19	Bedroom	15'5" x 15'4"	222 sq. ft	Yes

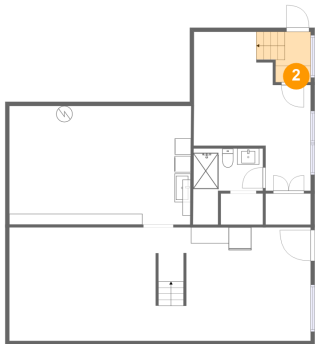
1 Floor 1 - Utility



Dimensions: 22'5" x 14'8"
Area: 329 sq. ft
Counted as living area: No

Heated: Yes
Finished: No
Enclosed: Yes
Contiguous: Yes
Permitted: Yes
Wet space: No
Addition: No
Conversion: No

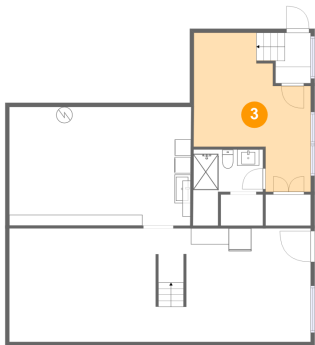
2 Floor 1 - Hall



Dimensions: 4'4" x 2'0"
Area: 35 sq. ft
Counted as living area: Yes

Heated: Yes
Finished: Yes
Enclosed: Yes
Contiguous: Yes
Permitted: Yes
Wet space: No
Addition: No
Conversion: No

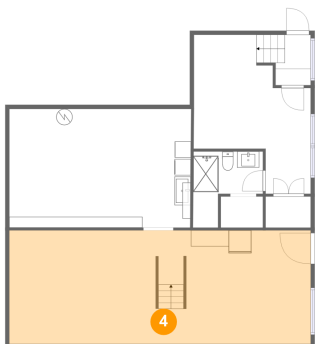
3 Floor 1 - Bedroom



Dimensions: 14'5" x 15'5"
Area: 196 sq. ft
Counted as living area: Yes

Heated: Yes
Finished: Yes
Enclosed: Yes
Contiguous: Yes
Permitted: Yes
Wet space: No
Addition: No
Conversion: No

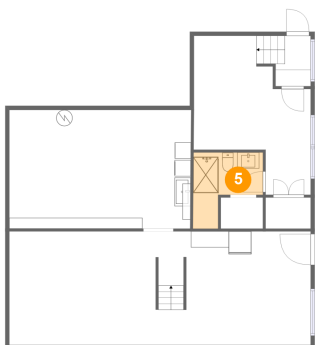
4 Floor 1 - Basement



Dimensions: 37'3" x 14'0"
Area: 523 sq. ft
Counted as living area: No

Heated: Yes
Finished: Yes
Enclosed: No
Contiguous: Yes
Permitted: Yes
Wet space: No
Addition: No
Conversion: No

5 Floor 1 - Bath



Dimensions: 8'7" x 5'2"
Area: 58 sq. ft
Counted as living area: Yes

Heated: Yes
Finished: Yes
Enclosed: Yes
Contiguous: Yes
Permitted: Yes
Wet space: Yes
Addition: No
Conversion: No

6 Floor 2 - Dining Room



Dimensions: 15'3" x 23'3"
Area: 353 sq. ft
Counted as living area: Yes

Heated: Yes
Finished: Yes
Enclosed: Yes
Contiguous: Yes
Permitted: Yes
Wet space: No
Addition: No
Conversion: No

7 Floor 2 - Deck



Dimensions: 27'3" x 41'5"
Area: 485 sq. ft
Counted as living area: No

Heated: No
Finished: Yes
Enclosed: No
Contiguous: Yes
Permitted: Yes
Wet space: No
Addition: No
Conversion: No

8 Floor 2 - Family Room



Dimensions: 15'4" x 15'0"
Area: 229 sq. ft
Counted as living area: Yes

Heated: Yes
Finished: Yes
Enclosed: Yes
Contiguous: Yes
Permitted: Yes
Wet space: No
Addition: No
Conversion: No

9 Floor 2 - Balcony



Dimensions: 3'4" x 18'1"
Area: 61 sq. ft
Counted as living area: No

Heated: No
Finished: Yes
Enclosed: No
Contiguous: Yes
Permitted: Yes
Wet space: No
Addition: No
Conversion: No

10 Floor 2 - Living Room



Dimensions: 14'9" x 14'9"
Area: 217 sq. ft
Counted as living area: Yes

Heated: Yes
Finished: Yes
Enclosed: Yes
Contiguous: Yes
Permitted: Yes
Wet space: No
Addition: No
Conversion: No

11 Floor 2 - WC



Dimensions: 6'5" x 5'7"
Area: 35 sq. ft
Counted as living area: Yes

Heated: Yes
Finished: Yes
Enclosed: Yes
Contiguous: Yes
Permitted: Yes
Wet space: Yes
Addition: No
Conversion: No

12 Floor 2 - Foyer



Dimensions: 7'2" x 5'5"
Area: 49 sq. ft
Counted as living area: Yes

Heated: Yes
Finished: Yes
Enclosed: Yes
Contiguous: Yes
Permitted: Yes
Wet space: No
Addition: No
Conversion: No

13 Floor 2 - Kitchen



Dimensions: 22'1" x 13'11"
Area: 292 sq. ft
Counted as living area: Yes

Heated: Yes
Finished: Yes
Enclosed: Yes
Contiguous: Yes
Permitted: Yes
Wet space: No
Addition: No
Conversion: No

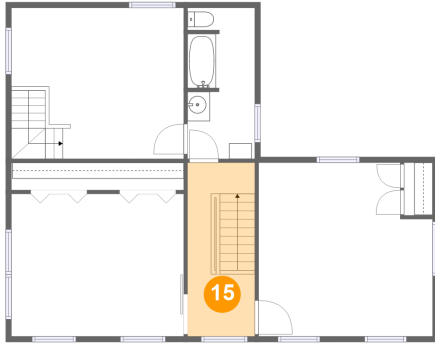
14 Floor 2 - Screened Porch



Dimensions: 19'9" x 7'11"
Area: 156 sq. ft
Counted as living area: No

Heated: No
Finished: Yes
Enclosed: No
Contiguous: Yes
Permitted: Yes
Wet space: No
Addition: No
Conversion: No

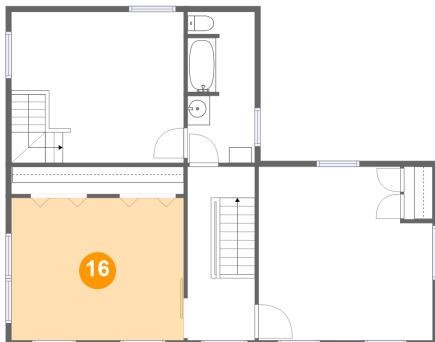
15 Floor 3 - Hall



Dimensions: 6'0" x 15'4"
Area: 91 sq. ft
Counted as living area: Yes

Heated: Yes
Finished: Yes
Enclosed: Yes
Contiguous: Yes
Permitted: Yes
Wet space: No
Addition: No
Conversion: No

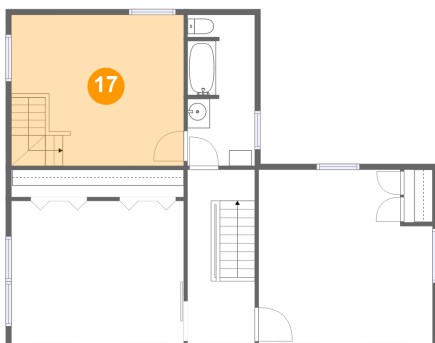
16 Floor 3 - Bedroom



Dimensions: 15'3" x 12'7"
Area: 192 sq. ft
Counted as living area: Yes

Heated: Yes
Finished: Yes
Enclosed: Yes
Contiguous: Yes
Permitted: Yes
Wet space: No
Addition: No
Conversion: No

17 Floor 3 - Primary Bedroom



Dimensions: 15'3" x 13'4"
Area: 204 sq. ft
Counted as living area: Yes

Heated: Yes
Finished: Yes
Enclosed: Yes
Contiguous: Yes
Permitted: Yes
Wet space: No
Addition: No
Conversion: No

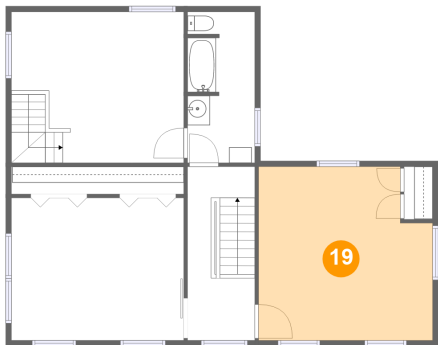
18 Floor 3 - Bath



Dimensions: 5'11" x 13'4"
Area: 78 sq. ft
Counted as living area: Yes

Heated: Yes
Finished: Yes
Enclosed: Yes
Contiguous: Yes
Permitted: Yes
Wet space: Yes
Addition: No
Conversion: No

19 Floor 3 - Bedroom



Dimensions: 15'5" x 15'4"
Area: 222 sq. ft
Counted as living area: Yes

Heated: Yes
Finished: Yes
Enclosed: Yes
Contiguous: Yes
Permitted: Yes
Wet space: No
Addition: No
Conversion: No