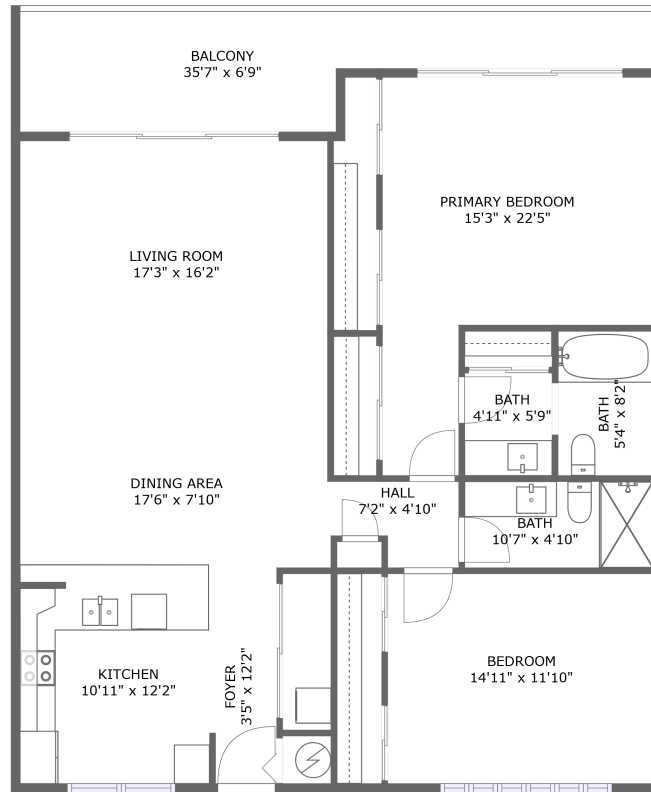



# 1591 Gulf Boulevard, Sand Key Club, Clearwater Beach, Pinellas County, Florida, United States, 33767,




FLOOR 1

## Property summary

 **0** Garages

 **2** Bedrooms

 **2** Bathrooms

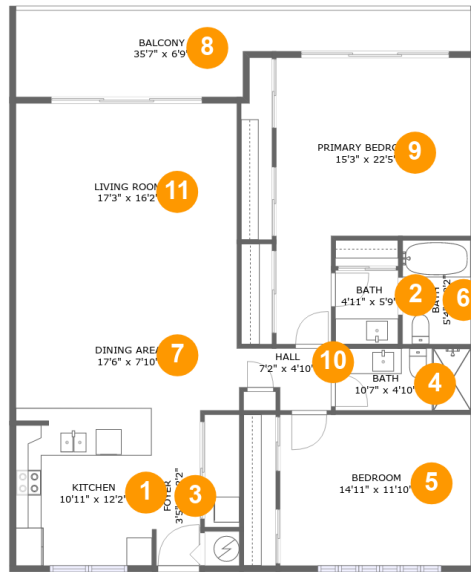
 **0** Half baths

 **1** Floors

 **1,350** Gross living area sqft

 **1,528** Total sqft

**1591 Gulf Boulevard, Sand Key Club, Clearwater Beach, Pinellas County, Florida, United States, 33767,**



**Room dimensions**

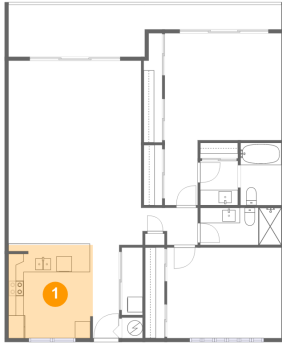
Floor 1

Total sqft: 1528 Living area: 1350

#		Dimensions	sqft	Counted as living area
1	Kitchen	10'11" x 12'2"	132 sq. ft	Yes
2	Bath	4'11" x 5'9"	28 sq. ft	Yes
3	Entry	3'5" x 12'2"	42 sq. ft	Yes
4	Bath	10'7" x 4'10"	51 sq. ft	Yes
5	Bedroom	14'11" x 11'10"	176 sq. ft	Yes
6	Bath	5'4" x 8'2"	43 sq. ft	Yes
7	Dining Room	17'6" x 7'10"	136 sq. ft	Yes
8	Outdoor	35'7" x 6'9"	178 sq. ft	No
9	Bedroom	15'3" x 22'5"	248 sq. ft	Yes
10	Hall	7'2" x 4'10"	29 sq. ft	Yes
11	Living Room	17'3" x 16'2"	280 sq. ft	Yes

# 1591 Gulf Boulevard, Sand Key Club, Clearwater Beach, Pinellas County, Florida, United States, 33767,

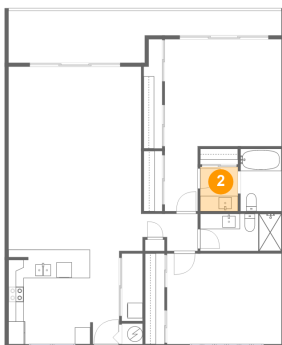
## 1 Floor 1 - Kitchen



Dimensions: 10'11" x 12'2"  
Area: 132 sq. ft  
Counted as living area: Yes

Heated: Yes  
Finished: Yes  
Enclosed: Yes  
Contiguous: Yes  
Permitted: Yes  
Wet space: No  
Addition: No  
Conversion: No

## 2 Floor 1 - Bath

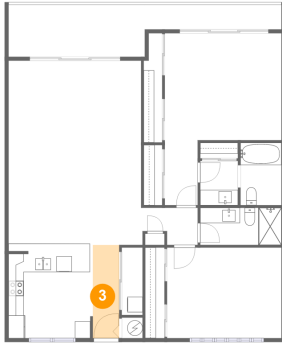


Dimensions: 4'11" x 5'9"  
Area: 28 sq. ft  
Counted as living area: Yes

Heated: Yes  
Finished: Yes  
Enclosed: Yes  
Contiguous: Yes  
Permitted: Yes  
Wet space: Yes  
Addition: No  
Conversion: No

# 1591 Gulf Boulevard, Sand Key Club, Clearwater Beach, Pinellas County, Florida, United States, 33767,

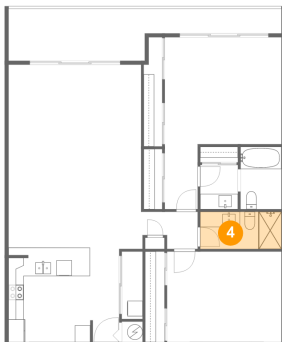
## 3 Floor 1 - Entry



Dimensions: 3'5" x 12'2"  
Area: 42 sq. ft  
Counted as living area: Yes

Heated: Yes  
Finished: Yes  
Enclosed: Yes  
Contiguous: Yes  
Permitted: Yes  
Wet space: No  
Addition: No  
Conversion: No

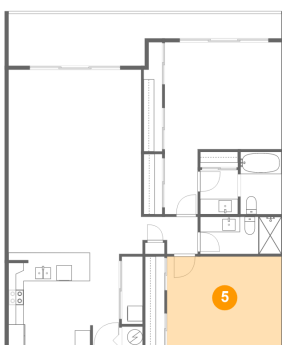
## 4 Floor 1 - Bath



Dimensions: 10'7" x 4'10"  
Area: 51 sq. ft  
Counted as living area: Yes

Heated: Yes  
Finished: Yes  
Enclosed: Yes  
Contiguous: Yes  
Permitted: Yes  
Wet space: Yes  
Addition: No  
Conversion: No

## 5 Floor 1 - Bedroom

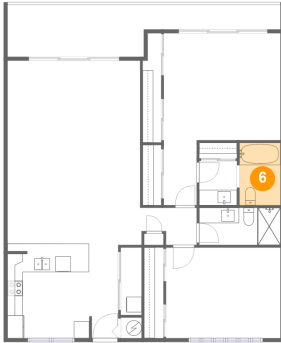


Dimensions: 14'11" x 11'10"  
Area: 176 sq. ft  
Counted as living area: Yes

Heated: Yes  
Finished: Yes  
Enclosed: Yes  
Contiguous: Yes  
Permitted: Yes  
Wet space: No  
Addition: No  
Conversion: No

**1591 Gulf Boulevard, Sand Key Club, Clearwater Beach, Pinellas County, Florida, United States, 33767,**

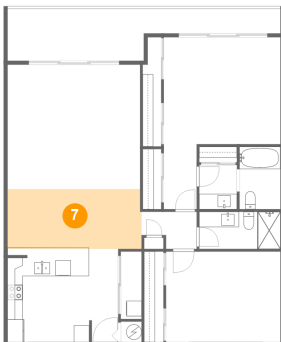
**6 Floor 1 - Bath**



**Dimensions: 5'4" x 8'2"**  
**Area: 43 sq. ft**  
**Counted as living area: Yes**

**Heated: Yes**  
**Finished: Yes**  
**Enclosed: Yes**  
**Contiguous: Yes**  
**Permitted: Yes**  
**Wet space: Yes**  
**Addition: No**  
**Conversion: No**

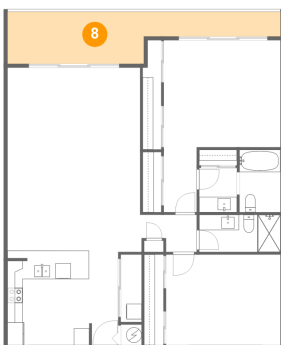
**7 Floor 1 - Dining Room**



**Dimensions: 17'6" x 7'10"**  
**Area: 136 sq. ft**  
**Counted as living area: Yes**

**Heated: Yes**  
**Finished: Yes**  
**Enclosed: Yes**  
**Contiguous: Yes**  
**Permitted: Yes**  
**Wet space: No**  
**Addition: No**  
**Conversion: No**

**8 Floor 1 - Outdoor**

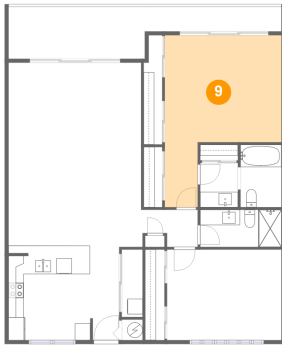


**Dimensions: 35'7" x 6'9"**  
**Area: 178 sq. ft**  
**Counted as living area: No**

**Heated: No**  
**Finished: Yes**  
**Enclosed: No**  
**Contiguous: Yes**  
**Permitted: Yes**  
**Wet space: No**  
**Addition: No**  
**Conversion: No**

# 1591 Gulf Boulevard, Sand Key Club, Clearwater Beach, Pinellas County, Florida, United States, 33767,

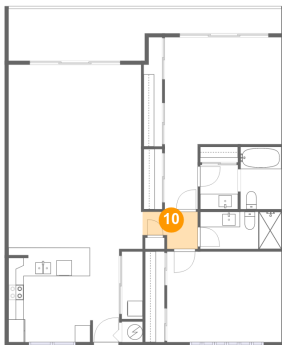
## 9 Floor 1 - Bedroom



Dimensions: 15'3" x 22'5"  
Area: 248 sq. ft  
Counted as living area: Yes

Heated: Yes  
Finished: Yes  
Enclosed: Yes  
Contiguous: Yes  
Permitted: Yes  
Wet space: No  
Addition: No  
Conversion: No

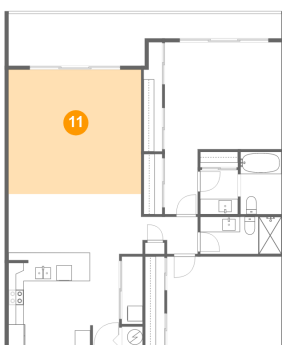
## 10 Floor 1 - Hall



Dimensions: 7'2" x 4'10"  
Area: 29 sq. ft  
Counted as living area: Yes

Heated: Yes  
Finished: Yes  
Enclosed: Yes  
Contiguous: Yes  
Permitted: Yes  
Wet space: No  
Addition: No  
Conversion: No

## 11 Floor 1 - Living Room



Dimensions: 17'3" x 16'2"  
Area: 280 sq. ft  
Counted as living area: Yes

Heated: Yes  
Finished: Yes  
Enclosed: Yes  
Contiguous: Yes  
Permitted: Yes  
Wet space: No  
Addition: No  
Conversion: No