

Home report

1775 Track Street, Pickering North, Claremont, Regional
Municipality of Durham, Ontario, Canada, L1Y 1B8




Total Area: 3157 sq. ft

Floor 1: 1784 sq. ft, Floor 2: 1373 sq. ft

Excluded: Open to below 394 sq. ft, Walls: 230 sq. ft

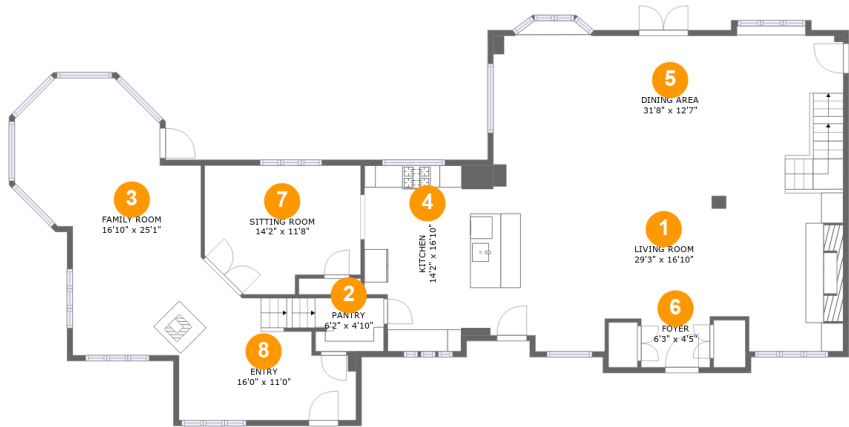
Property summary

 2 Floors

 2 Bedrooms

 2 Bathrooms

1775 Track Street, Pickering North, Claremont, Regional
Municipality of Durham, Ontario, Canada, L1Y 1B8



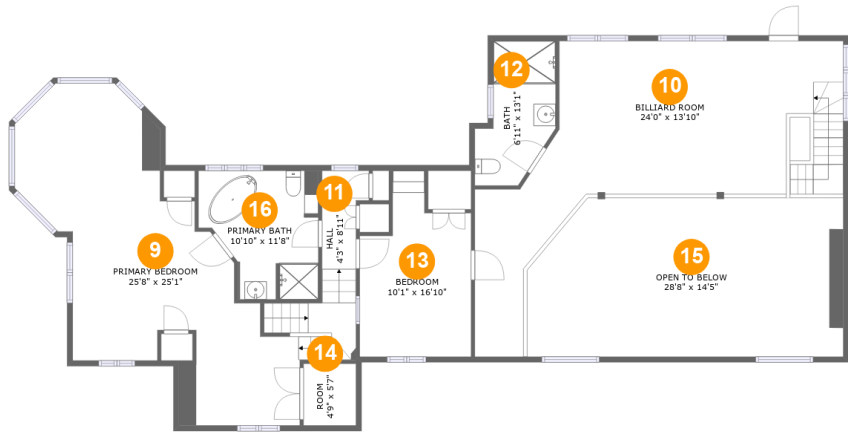
Room dimensions

Floor 1 Total:1784sqft Excluded: 0sqft

#		Max Dimensions	sqft	Included
1	Living Room	29'3" x 16'10"	438 sq. ft	Yes
2	Pantry	6'2" x 4'10"	30 sq. ft	Yes
3	Family Room	16'10" x 25'1"	310 sq. ft	Yes
4	Kitchen	14'2" x 16'10"	219 sq. ft	Yes
5	Dining Area	31'8" x 12'7"	398 sq. ft	Yes
6	Foyer	6'3" x 4'5"	27 sq. ft	Yes
7	Sitting Room	14'2" x 11'8"	148 sq. ft	Yes
8	Entry	16'0" x 11'0"	154 sq. ft	Yes

Home report

1775 Track Street, Pickering North, Claremont, Regional Municipality of Durham, Ontario, Canada, L1Y 1B8



Room dimensions

Floor 2 Total:1373sqft Excluded: 394sqft

#		Max Dimensions	sqft	Included
9	Primary Bedroom	25'8" x 25'1"	442 sq. ft	Yes
10	Billiard Room	24'0" x 13'10"	467 sq. ft	Yes
11	Hall	4'3" x 8'11"	39 sq. ft	Yes
12	Bath	6'11" x 13'1"	74 sq. ft	Yes
13	Bedroom	10'1" x 16'10"	136 sq. ft	Yes
14	Room	4'9" x 5'7"	27 sq. ft	Yes
15	Open To Below	28'8" x 14'5"	394 sq. ft	No
16	Primary Bath	10'10" x 11'8"	106 sq. ft	Yes

1775 Track Street, Pickering North, Claremont, Regional
Municipality of Durham, Ontario, Canada, L1Y 1B8

1 Floor 1 - Living Room



Max Dimensions: 29'3" x 16'10"
Calculated Area: 438 sq. ft
Included: Yes

Heated: Yes
Finished: Yes
Enclosed: Yes
Contiguous: Yes
Permitted: Yes
Wet space: No
Addition: No
Conversion: No

2 Floor 1 - Pantry

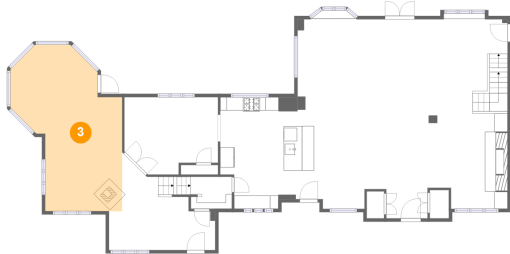


Max Dimensions: 6'2" x 4'10"
Calculated Area: 30 sq. ft
Included: Yes

Heated: Yes
Finished: Yes
Enclosed: Yes
Contiguous: Yes
Permitted: Yes
Wet space: No
Addition: No
Conversion: No

1775 Track Street, Pickering North, Claremont, Regional
Municipality of Durham, Ontario, Canada, L1Y 1B8

3 Floor 1 - Family Room



Max Dimensions: 16'10" x 25'1"
Calculated Area: 310 sq. ft
Included: Yes

Heated: Yes
Finished: Yes
Enclosed: Yes
Contiguous: Yes
Permitted: Yes
Wet space: No
Addition: No
Conversion: No

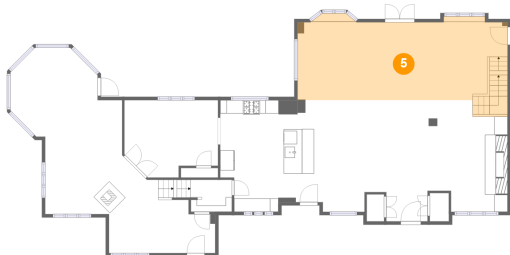
4 Floor 1 - Kitchen



Max Dimensions: 14'2" x 16'10"
Calculated Area: 219 sq. ft
Included: Yes

Heated: Yes
Finished: Yes
Enclosed: Yes
Contiguous: Yes
Permitted: Yes
Wet space: No
Addition: No
Conversion: No

5 Floor 1 - Dining Area

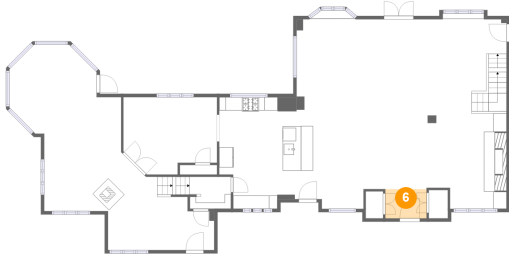


Max Dimensions: 31'8" x 12'7"
Calculated Area: 398 sq. ft
Included: Yes

Heated: Yes
Finished: Yes
Enclosed: Yes
Contiguous: Yes
Permitted: Yes
Wet space: No
Addition: No
Conversion: No

1775 Track Street, Pickering North, Claremont, Regional
Municipality of Durham, Ontario, Canada, L1Y 1B8

6 Floor 1 - Foyer



Max Dimensions: 6'3" x 4'5"
Calculated Area: 27 sq. ft
Included: Yes

Heated: Yes
Finished: Yes
Enclosed: Yes
Contiguous: Yes
Permitted: Yes
Wet space: No
Addition: No
Conversion: No

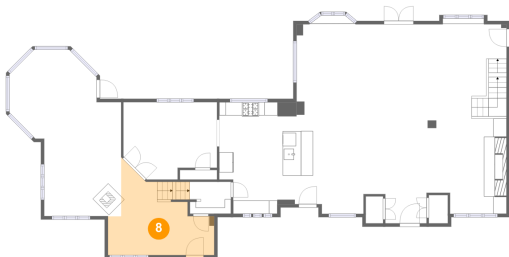
7 Floor 1 - Sitting Room



Max Dimensions: 14'2" x 11'8"
Calculated Area: 148 sq. ft
Included: Yes

Heated: Yes
Finished: Yes
Enclosed: Yes
Contiguous: Yes
Permitted: Yes
Wet space: No
Addition: No
Conversion: No

8 Floor 1 - Entry

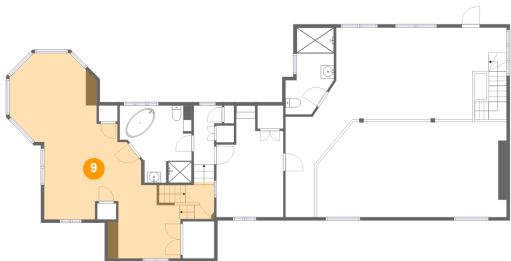


Max Dimensions: 16'0" x 11'0"
Calculated Area: 154 sq. ft
Included: Yes

Heated: Yes
Finished: Yes
Enclosed: Yes
Contiguous: Yes
Permitted: Yes
Wet space: No
Addition: No
Conversion: No

1775 Track Street, Pickering North, Claremont, Regional
Municipality of Durham, Ontario, Canada, L1Y 1B8

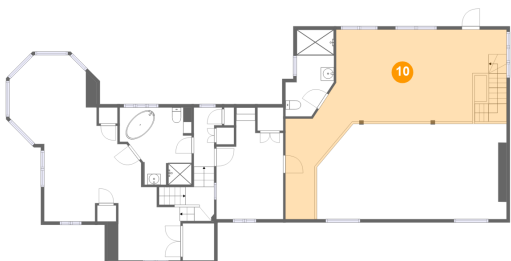
9 Floor 2 - Primary Bedroom



Max Dimensions: 25'8" x 25'1"
Calculated Area: 442 sq. ft
Included: Yes

Heated: Yes
Finished: Yes
Enclosed: Yes
Contiguous: Yes
Permitted: Yes
Wet space: No
Addition: No
Conversion: No

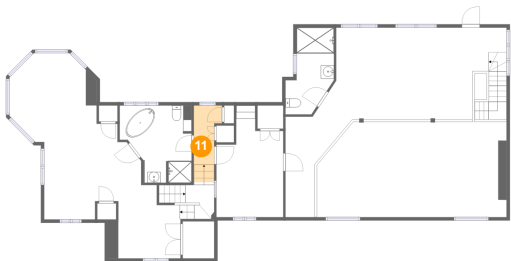
10 Floor 2 - Billiard Room



Max Dimensions: 24'0" x 13'10"
Calculated Area: 467 sq. ft
Included: Yes

Heated: Yes
Finished: Yes
Enclosed: Yes
Contiguous: Yes
Permitted: Yes
Wet space: No
Addition: No
Conversion: No

11 Floor 2 - Hall

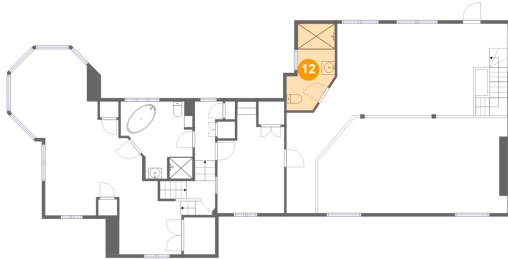


Max Dimensions: 4'3" x 8'11"
Calculated Area: 39 sq. ft
Included: Yes

Heated: Yes
Finished: Yes
Enclosed: Yes
Contiguous: Yes
Permitted: Yes
Wet space: No
Addition: No
Conversion: No

1775 Track Street, Pickering North, Claremont, Regional
Municipality of Durham, Ontario, Canada, L1Y 1B8

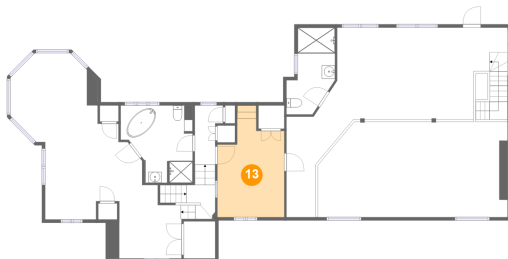
12 Floor 2 - Bath



Max Dimensions: 6'11" x 13'1"
Calculated Area: 74 sq. ft
Included: Yes

Heated: Yes
Finished: Yes
Enclosed: Yes
Contiguous: Yes
Permitted: Yes
Wet space: Yes
Addition: No
Conversion: No

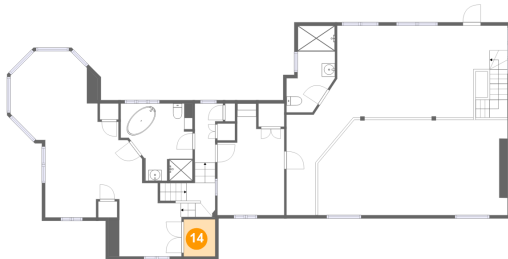
13 Floor 2 - Bedroom



Max Dimensions: 10'1" x 16'10"
Calculated Area: 136 sq. ft
Included: Yes

Heated: Yes
Finished: Yes
Enclosed: Yes
Contiguous: Yes
Permitted: Yes
Wet space: No
Addition: No
Conversion: No

14 Floor 2 - Room

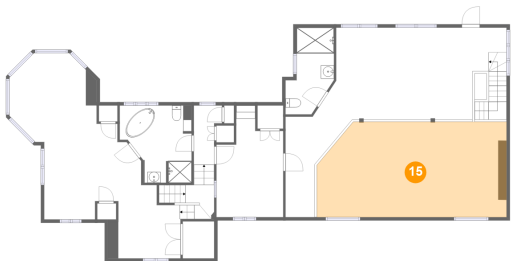


Max Dimensions: 4'9" x 5'7"
Calculated Area: 27 sq. ft
Included: Yes

Heated: Yes
Finished: Yes
Enclosed: Yes
Contiguous: Yes
Permitted: Yes
Wet space: No
Addition: No
Conversion: No

1775 Track Street, Pickering North, Claremont, Regional
Municipality of Durham, Ontario, Canada, L1Y 1B8

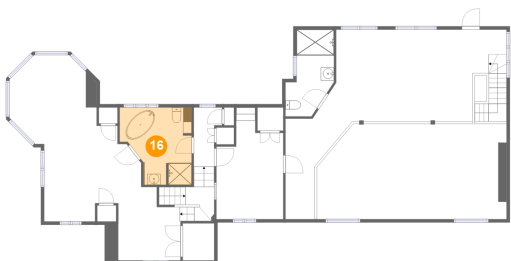
15 Floor 2 - Open To Below



Max Dimensions: 28'8" x 14'5"
Calculated Area: 394 sq. ft
Included: No

Heated: No
Finished: No
Enclosed: No
Contiguous: Yes
Permitted: No
Wet space: No
Addition: No
Conversion: No

16 Floor 2 - Primary Bath



Max Dimensions: 10'10" x 11'8"
Calculated Area: 106 sq. ft
Included: Yes

Heated: Yes
Finished: Yes
Enclosed: Yes
Contiguous: Yes
Permitted: Yes
Wet space: Yes
Addition: No
Conversion: No