



Home report


455 Seaman Street, Industrial, Stoney Creek, Ontario, Canada, L8E 2R2




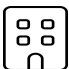
Property summary


 **1** Garages


 **0** Bedrooms

 **1** Bathrooms

 **4** Half baths

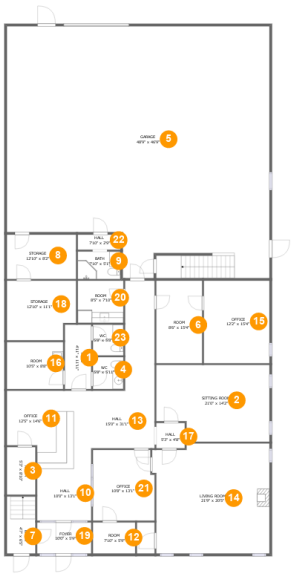
 **2** Floors

 **5,178** Gross living area sqft

 **9,743** Total sqft

Home report

455 Seaman Street, Industrial, Stoney Creek, Ontario, Canada,  
L8E 2R2



Room dimensions

Floor 1 Total sqft: 4919    Living area: 2421

#		Dimensions	sqft	Counted as living area
1	Hall	4'11" x 11'11"	58 sq. ft	Yes
2	Sitting Room	21'0" x 14'2"	278 sq. ft	Yes
3	Room	5'3" x 8'10"	47 sq. ft	Yes
4	WC	5'8" x 5'11"	33 sq. ft	Yes
5	Garage	48'9" x 46'9"	2087 sq. ft	No
6	Room	8'6" x 15'4"	130 sq. ft	Yes
7	Entry	4'7" x 6'5"	56 sq. ft	Yes
8	Storage	12'10" x 8'2"	105 sq. ft	No
9	Bath	7'10" x 5'1"	40 sq. ft	No
10	Hall	10'0" x 13'1"	108 sq. ft	Yes
11	Office	12'5" x 14'6"	155 sq. ft	Yes

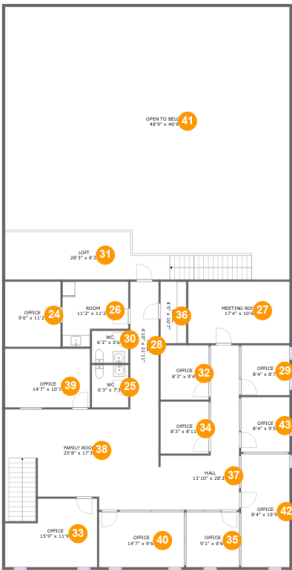
## Home report

**455 Seaman Street, Industrial, Stoney Creek, Ontario, Canada,  
L8E 2R2**

#		Dimensions	sqft	Counted as living area
12	Room	7'10" x 5'9"	45 sq. ft	Yes
13	Hall	15'0" x 31'1"	273 sq. ft	Yes
14	Living Room	21'9" x 20'5"	426 sq. ft	Yes
15	Office	12'2" x 15'4"	186 sq. ft	Yes
16	Room	10'5" x 8'8"	91 sq. ft	Yes
17	Hall	5'3" x 4'8"	25 sq. ft	Yes
18	Storage	12'10" x 11'1"	134 sq. ft	No
19	Foyer	10'0" x 5'9"	58 sq. ft	Yes
20	Room	8'5" x 7'10"	66 sq. ft	Yes
21	Office	10'8" x 13'1"	147 sq. ft	Yes
22	Hall	7'10" x 2'9"	22 sq. ft	No
23	WC	5'8" x 5'8"	32 sq. ft	Yes

Home report

455 Seaman Street, Industrial, Stoney Creek, Ontario, Canada, L8E 2R2



Room dimensions

Floor 2 Total sqft: 4824    Living area: 2757

#		Dimensions	sqft	Counted as living area
24	Office	9'6" x 11'2"	106 sq. ft	Yes
25	WC	6'3" x 7'3"	45 sq. ft	Yes
26	Room	11'3" x 11'2"	106 sq. ft	Yes
27	Meeting Room	17'4" x 10'6"	183 sq. ft	Yes
28	Hall	4'10" x 21'11"	106 sq. ft	Yes
29	Office	8'4" x 8'7"	71 sq. ft	Yes
30	WC	6'3" x 5'6"	34 sq. ft	Yes
31	Loft	28'3" x 8'2"	278 sq. ft	Yes
32	Office	8'3" x 9'4"	77 sq. ft	Yes
33	Office	15'9" x 11'9"	162 sq. ft	Yes
34	Office	8'3" x 8'11"	74 sq. ft	Yes

## Home report

**455 Seaman Street, Industrial, Stoney Creek, Ontario, Canada,  
L8E 2R2**

#		Dimensions	sqft	Counted as living area
35	Office	9'1" x 9'6"	86 sq. ft	Yes
36	W.I.C.	4'5" x 10'7"	47 sq. ft	Yes
37	Hall	13'10" x 28'2"	220 sq. ft	Yes
38	Family Room	25'8" x 17'3"	436 sq. ft	Yes
39	Office	14'7" x 10'1"	146 sq. ft	Yes
40	Office	14'7" x 9'6"	138 sq. ft	Yes
41	Open To Below	48'9" x 46'9"	2000 sq. ft	No
42	Office	8'4" x 19'5"	161 sq. ft	Yes
43	Office	8'4" x 9'5"	78 sq. ft	Yes

455 Seaman Street, Industrial, Stoney Creek, Ontario, Canada,  
L8E 2R2

1 Floor 1 - Hall



Dimensions: 4'11" x 11'11"  
Area: 58 sq. ft  
Counted as living area: Yes

Heated: Yes  
Finished: Yes  
Enclosed: Yes  
Contiguous: Yes  
Permitted: Yes  
Wet space: No  
Addition: No  
Conversion: No

2 Floor 1 - Sitting Room



Dimensions: 21'0" x 14'2"  
Area: 278 sq. ft  
Counted as living area: Yes

Heated: Yes  
Finished: Yes  
Enclosed: Yes  
Contiguous: Yes  
Permitted: Yes  
Wet space: No  
Addition: No  
Conversion: No

455 Seaman Street, Industrial, Stoney Creek, Ontario, Canada,  
L8E 2R2

3 Floor 1 - Room



Dimensions: 5'3" x 8'10"  
Area: 47 sq. ft  
Counted as living area: Yes

Heated: Yes  
Finished: Yes  
Enclosed: Yes  
Contiguous: Yes  
Permitted: Yes  
Wet space: No  
Addition: No  
Conversion: No

4 Floor 1 - WC



Dimensions: 5'8" x 5'11"  
Area: 33 sq. ft  
Counted as living area: Yes

Heated: Yes  
Finished: Yes  
Enclosed: Yes  
Contiguous: Yes  
Permitted: Yes  
Wet space: Yes  
Addition: No  
Conversion: No

5 Floor 1 - Garage



Dimensions: 48'9" x 46'9"  
Area: 2087 sq. ft  
Counted as living area: No

Heated: No  
Finished: No  
Enclosed: Yes  
Contiguous: Yes  
Permitted: Yes  
Wet space: No  
Addition: No  
Conversion: No

455 Seaman Street, Industrial, Stoney Creek, Ontario, Canada,  
L8E 2R2

6 Floor 1 - Room



Dimensions: 8'6" x 15'4"  
Area: 130 sq. ft  
Counted as living area: Yes

Heated: Yes  
Finished: Yes  
Enclosed: Yes  
Contiguous: Yes  
Permitted: Yes  
Wet space: No  
Addition: No  
Conversion: No

7 Floor 1 - Entry



Dimensions: 4'7" x 6'5"  
Area: 56 sq. ft  
Counted as living area: Yes

Heated: Yes  
Finished: Yes  
Enclosed: Yes  
Contiguous: Yes  
Permitted: Yes  
Wet space: No  
Addition: No  
Conversion: No

8 Floor 1 - Storage



Dimensions: 12'10" x 8'2"  
Area: 105 sq. ft  
Counted as living area: No

Heated: No  
Finished: No  
Enclosed: No  
Contiguous: Yes  
Permitted: Yes  
Wet space: No  
Addition: No  
Conversion: No



455 Seaman Street, Industrial, Stoney Creek, Ontario, Canada,  
L8E 2R2

## 9 Floor 1 - Bath



Dimensions: 7'10" x 5'1"  
Area: 40 sq. ft  
Counted as living area: No

Heated: Yes  
Finished: Yes  
Enclosed: Yes  
Contiguous: No  
Permitted: Yes  
Wet space: Yes  
Addition: No  
Conversion: No

## 10 Floor 1 - Hall



Dimensions: 10'0" x 13'1"  
Area: 108 sq. ft  
Counted as living area: Yes

Heated: Yes  
Finished: Yes  
Enclosed: Yes  
Contiguous: Yes  
Permitted: Yes  
Wet space: No  
Addition: No  
Conversion: No

## 11 Floor 1 - Office



Dimensions: 12'5" x 14'6"  
Area: 155 sq. ft  
Counted as living area: Yes

Heated: Yes  
Finished: Yes  
Enclosed: Yes  
Contiguous: Yes  
Permitted: Yes  
Wet space: No  
Addition: No  
Conversion: No

455 Seaman Street, Industrial, Stoney Creek, Ontario, Canada,  
L8E 2R2

12 Floor 1 - Room



Dimensions: 7'10" x 5'9"  
Area: 45 sq. ft  
Counted as living area: Yes

Heated: Yes  
Finished: Yes  
Enclosed: Yes  
Contiguous: Yes  
Permitted: Yes  
Wet space: No  
Addition: No  
Conversion: No

13 Floor 1 - Hall



Dimensions: 15'0" x 31'1"  
Area: 273 sq. ft  
Counted as living area: Yes

Heated: Yes  
Finished: Yes  
Enclosed: Yes  
Contiguous: Yes  
Permitted: Yes  
Wet space: No  
Addition: No  
Conversion: No

14 Floor 1 - Living Room



Dimensions: 21'9" x 20'5"  
Area: 426 sq. ft  
Counted as living area: Yes

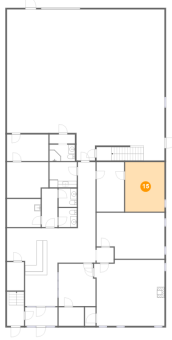
Heated: Yes  
Finished: Yes  
Enclosed: Yes  
Contiguous: Yes  
Permitted: Yes  
Wet space: No  
Addition: No  
Conversion: No

## Home report

455 Seaman Street, Industrial, Stoney Creek, Ontario, Canada,  
L8E 2R2

### 15 Floor 1 - Office

---



Dimensions: 12'2" x 15'4"  
Area: 186 sq. ft  
Counted as living area: Yes

Heated: Yes  
Finished: Yes  
Enclosed: Yes  
Contiguous: Yes  
Permitted: Yes  
Wet space: No  
Addition: No  
Conversion: No

### 16 Floor 1 - Room

---



Dimensions: 10'5" x 8'8"  
Area: 91 sq. ft  
Counted as living area: Yes

Heated: Yes  
Finished: Yes  
Enclosed: Yes  
Contiguous: Yes  
Permitted: Yes  
Wet space: No  
Addition: No  
Conversion: No

### 17 Floor 1 - Hall

---



Dimensions: 5'3" x 4'8"  
Area: 25 sq. ft  
Counted as living area: Yes

Heated: Yes  
Finished: Yes  
Enclosed: Yes  
Contiguous: Yes  
Permitted: Yes  
Wet space: No  
Addition: No  
Conversion: No

455 Seaman Street, Industrial, Stoney Creek, Ontario, Canada,  
L8E 2R2

18 Floor 1 - Storage



Dimensions: 12'10" x 11'1"  
Area: 134 sq. ft  
Counted as living area: No

Heated: No  
Finished: No  
Enclosed: No  
Contiguous: Yes  
Permitted: Yes  
Wet space: No  
Addition: No  
Conversion: No

19 Floor 1 - Foyer



Dimensions: 10'0" x 5'9"  
Area: 58 sq. ft  
Counted as living area: Yes

Heated: Yes  
Finished: Yes  
Enclosed: Yes  
Contiguous: Yes  
Permitted: Yes  
Wet space: No  
Addition: No  
Conversion: No

20 Floor 1 - Room



Dimensions: 8'5" x 7'10"  
Area: 66 sq. ft  
Counted as living area: Yes

Heated: Yes  
Finished: Yes  
Enclosed: Yes  
Contiguous: Yes  
Permitted: Yes  
Wet space: No  
Addition: No  
Conversion: No

## Home report

455 Seaman Street, Industrial, Stoney Creek, Ontario, Canada,  
L8E 2R2

### 21 Floor 1 - Office

---



Dimensions: 10'8" x 13'1"  
Area: 147 sq. ft  
Counted as living area: Yes

Heated: Yes  
Finished: Yes  
Enclosed: Yes  
Contiguous: Yes  
Permitted: Yes  
Wet space: No  
Addition: No  
Conversion: No

### 22 Floor 1 - Hall

---



Dimensions: 7'10" x 2'9"  
Area: 22 sq. ft  
Counted as living area: No

Heated: Yes  
Finished: Yes  
Enclosed: Yes  
Contiguous: No  
Permitted: Yes  
Wet space: No  
Addition: No  
Conversion: No

### 23 Floor 1 - WC

---

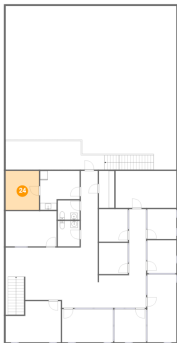


Dimensions: 5'8" x 5'8"  
Area: 32 sq. ft  
Counted as living area: Yes

Heated: Yes  
Finished: Yes  
Enclosed: Yes  
Contiguous: Yes  
Permitted: Yes  
Wet space: No  
Addition: No  
Conversion: No

455 Seaman Street, Industrial, Stoney Creek, Ontario, Canada,  
L8E 2R2

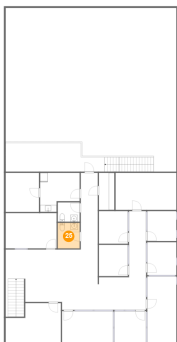
24 Floor 2 - Office



Dimensions: 9'6" x 11'2"  
Area: 106 sq. ft  
Counted as living area: Yes

Heated: Yes  
Finished: Yes  
Enclosed: Yes  
Contiguous: Yes  
Permitted: Yes  
Wet space: No  
Addition: No  
Conversion: No

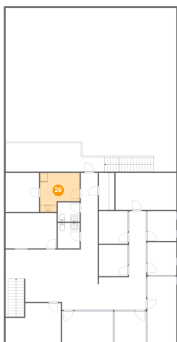
25 Floor 2 - WC



Dimensions: 6'3" x 7'3"  
Area: 45 sq. ft  
Counted as living area: Yes

Heated: Yes  
Finished: Yes  
Enclosed: Yes  
Contiguous: Yes  
Permitted: Yes  
Wet space: No  
Addition: No  
Conversion: No

26 Floor 2 - Room

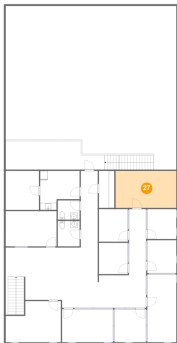


Dimensions: 11'3" x 11'2"  
Area: 106 sq. ft  
Counted as living area: Yes

Heated: Yes  
Finished: Yes  
Enclosed: Yes  
Contiguous: Yes  
Permitted: Yes  
Wet space: No  
Addition: No  
Conversion: No

455 Seaman Street, Industrial, Stoney Creek, Ontario, Canada,  
L8E 2R2

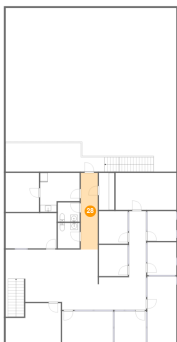
27 Floor 2 - Meeting Room



Dimensions: 17'4" x 10'6"  
Area: 183 sq. ft  
Counted as living area: Yes

Heated: Yes  
Finished: Yes  
Enclosed: Yes  
Contiguous: Yes  
Permitted: Yes  
Wet space: No  
Addition: No  
Conversion: No

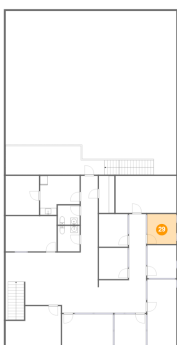
28 Floor 2 - Hall



Dimensions: 4'10" x 21'11"  
Area: 106 sq. ft  
Counted as living area: Yes

Heated: Yes  
Finished: Yes  
Enclosed: Yes  
Contiguous: Yes  
Permitted: Yes  
Wet space: No  
Addition: No  
Conversion: No

29 Floor 2 - Office

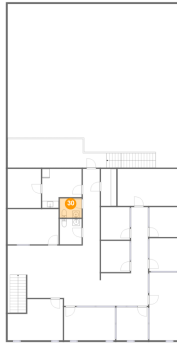


Dimensions: 8'4" x 8'7"  
Area: 71 sq. ft  
Counted as living area: Yes

Heated: Yes  
Finished: Yes  
Enclosed: Yes  
Contiguous: Yes  
Permitted: Yes  
Wet space: No  
Addition: No  
Conversion: No

455 Seaman Street, Industrial, Stoney Creek, Ontario, Canada,  
L8E 2R2

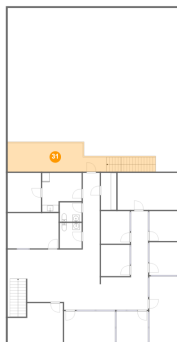
### 30 Floor 2 - WC



Dimensions: 6'3" x 5'6"  
Area: 34 sq. ft  
Counted as living area: Yes

Heated: Yes  
Finished: Yes  
Enclosed: Yes  
Contiguous: Yes  
Permitted: Yes  
Wet space: No  
Addition: No  
Conversion: No

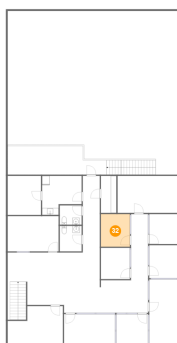
### 31 Floor 2 - Loft



Dimensions: 28'3" x 8'2"  
Area: 278 sq. ft  
Counted as living area: Yes

Heated: Yes  
Finished: Yes  
Enclosed: Yes  
Contiguous: Yes  
Permitted: Yes  
Wet space: No  
Addition: No  
Conversion: No

### 32 Floor 2 - Office



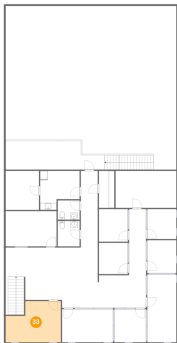
Dimensions: 8'3" x 9'4"  
Area: 77 sq. ft  
Counted as living area: Yes

Heated: Yes  
Finished: Yes  
Enclosed: Yes  
Contiguous: Yes  
Permitted: Yes  
Wet space: No  
Addition: No  
Conversion: No



455 Seaman Street, Industrial, Stoney Creek, Ontario, Canada,  
L8E 2R2

33 Floor 2 - Office



Dimensions: 15'9" x 11'9"  
Area: 162 sq. ft  
Counted as living area: Yes

Heated: Yes  
Finished: Yes  
Enclosed: Yes  
Contiguous: Yes  
Permitted: Yes  
Wet space: No  
Addition: No  
Conversion: No

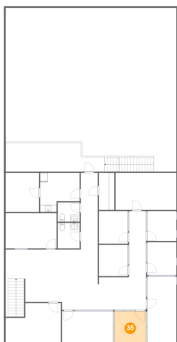
34 Floor 2 - Office



Dimensions: 8'3" x 8'11"  
Area: 74 sq. ft  
Counted as living area: Yes

Heated: Yes  
Finished: Yes  
Enclosed: Yes  
Contiguous: Yes  
Permitted: Yes  
Wet space: No  
Addition: No  
Conversion: No

35 Floor 2 - Office

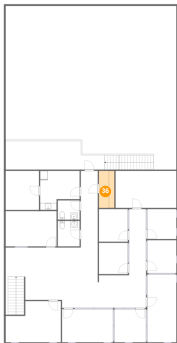


Dimensions: 9'1" x 9'6"  
Area: 86 sq. ft  
Counted as living area: Yes

Heated: Yes  
Finished: Yes  
Enclosed: Yes  
Contiguous: Yes  
Permitted: Yes  
Wet space: No  
Addition: No  
Conversion: No

455 Seaman Street, Industrial, Stoney Creek, Ontario, Canada,  
L8E 2R2

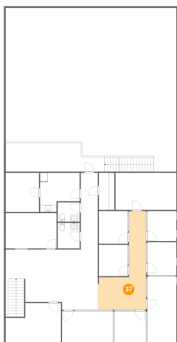
36 Floor 2 - W.I.C.



Dimensions: 4'5" x 10'7"  
Area: 47 sq. ft  
Counted as living area: Yes

Heated: Yes  
Finished: Yes  
Enclosed: Yes  
Contiguous: Yes  
Permitted: Yes  
Wet space: No  
Addition: No  
Conversion: No

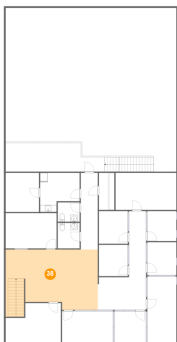
37 Floor 2 - Hall



Dimensions: 13'10" x 28'2"  
Area: 220 sq. ft  
Counted as living area: Yes

Heated: Yes  
Finished: Yes  
Enclosed: Yes  
Contiguous: Yes  
Permitted: Yes  
Wet space: No  
Addition: No  
Conversion: No

38 Floor 2 - Family Room

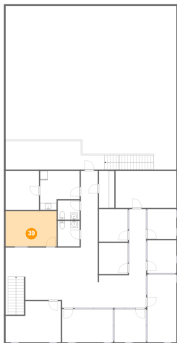


Dimensions: 25'8" x 17'3"  
Area: 436 sq. ft  
Counted as living area: Yes

Heated: Yes  
Finished: Yes  
Enclosed: Yes  
Contiguous: Yes  
Permitted: Yes  
Wet space: No  
Addition: No  
Conversion: No

455 Seaman Street, Industrial, Stoney Creek, Ontario, Canada,  
L8E 2R2

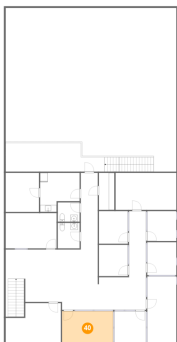
39 Floor 2 - Office



Dimensions: 14'7" x 10'1"  
Area: 146 sq. ft  
Counted as living area: Yes

Heated: Yes  
Finished: Yes  
Enclosed: Yes  
Contiguous: Yes  
Permitted: Yes  
Wet space: No  
Addition: No  
Conversion: No

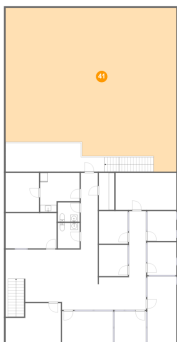
40 Floor 2 - Office



Dimensions: 14'7" x 9'6"  
Area: 138 sq. ft  
Counted as living area: Yes

Heated: Yes  
Finished: Yes  
Enclosed: Yes  
Contiguous: Yes  
Permitted: Yes  
Wet space: No  
Addition: No  
Conversion: No

41 Floor 2 - Open To Below

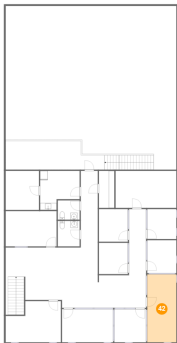


Dimensions: 48'9" x 46'9"  
Area: 2000 sq. ft  
Counted as living area: No

Heated: No  
Finished: No  
Enclosed: No  
Contiguous: Yes  
Permitted: No  
Wet space: No  
Addition: No  
Conversion: No

455 Seaman Street, Industrial, Stoney Creek, Ontario, Canada,  
L8E 2R2

42 Floor 2 - Office



Dimensions: 8'4" x 19'5"  
Area: 161 sq. ft  
Counted as living area: Yes

Heated: Yes  
Finished: Yes  
Enclosed: Yes  
Contiguous: Yes  
Permitted: Yes  
Wet space: No  
Addition: No  
Conversion: No

43 Floor 2 - Office



Dimensions: 8'4" x 9'5"  
Area: 78 sq. ft  
Counted as living area: Yes

Heated: Yes  
Finished: Yes  
Enclosed: Yes  
Contiguous: Yes  
Permitted: Yes  
Wet space: No  
Addition: No  
Conversion: No