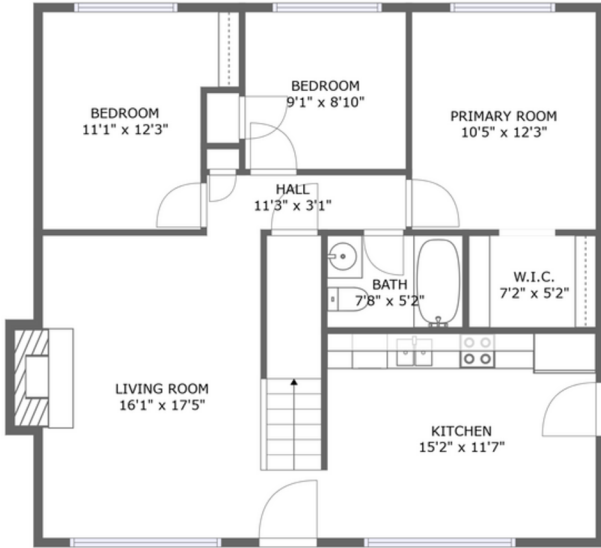
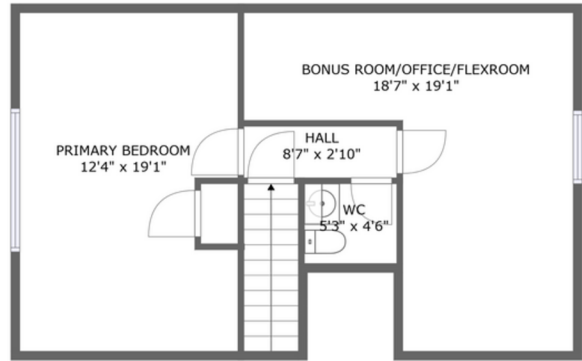


5926 138th Street Southeast, Silver Firs, Everett, Snohomish County, Washington, United States,



FLOOR 1





FLOOR 2

Property Summary

 0 garages


 5 bedrooms

 1 bathrooms

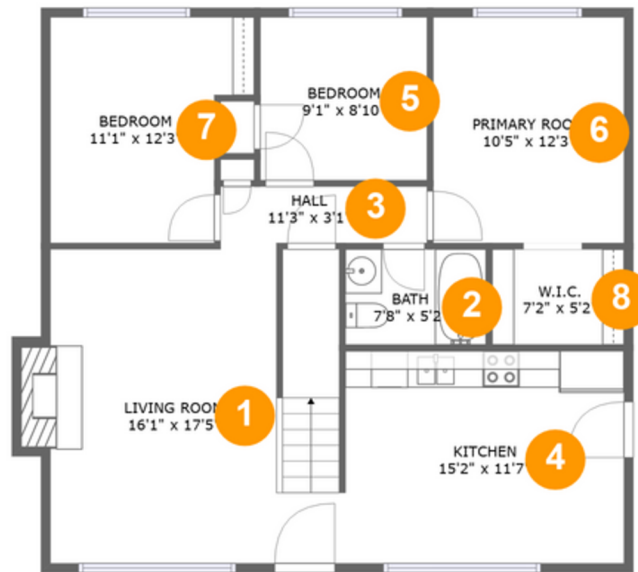
 1 half baths

 2 floors

 1,429
Gross Living
Area sqft

 1,620
total sqft

5926 138th Street Southeast, Silver Firs, Everett, Snohomish County, Washington, United States,



Room Dimensions

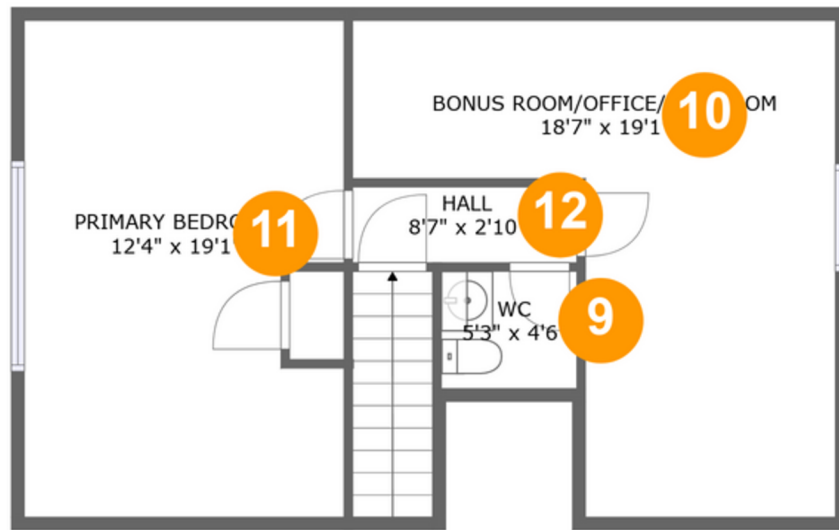
Floor 1

Total sqft: 997

Living area: 987

| # | Room name | Dimensions | Area (sqft) | Counted as Living Area |
|---|--------------|---------------|-------------|------------------------|
| 1 | Living Room | 16'1" x 17'5" | 276 sq. ft | Yes |
| 2 | Bath | 7'8" x 5'2" | 40 sq. ft | Yes |
| 3 | Hall | 11'3" x 3'1" | 35 sq. ft | Yes |
| 4 | Kitchen | 15'2" x 11'7" | 175 sq. ft | Yes |
| 5 | Bedroom | 9'1" x 8'10" | 80 sq. ft | Yes |
| 6 | Primary Room | 10'5" x 12'3" | 127 sq. ft | Yes |
| 7 | Bedroom | 11'1" x 12'3" | 119 sq. ft | Yes |
| 8 | W.i.c. | 7'2" x 5'2" | 37 sq. ft | Yes |

5926 138th Street Southeast, Silver Firs, Everett, Snohomish County, Washington, United States,



Room Dimensions

Floor 2

Total sqft: 623

Living area: 442

| # | Room name | Dimensions | Area (sqft) | Counted as Living Area |
|----|--------------------------------|---------------|-------------|------------------------|
| 9 | Wc | 5'3" x 4'6" | 23 sq. ft | No |
| 10 | Bonus ROOM/OFFICE/ FLEXROOM | 18'7" x 19'1" | 175 sq. ft | Yes |
| 11 | Primary Bedroom | 12'4" x 19'1" | 168 sq. ft | Yes |
| 12 | Hall | 8'7" x 2'10" | 25 sq. ft | Yes |

5926 138th Street Southeast, Silver Firs, Everett, Snohomish County, Washington, United States,

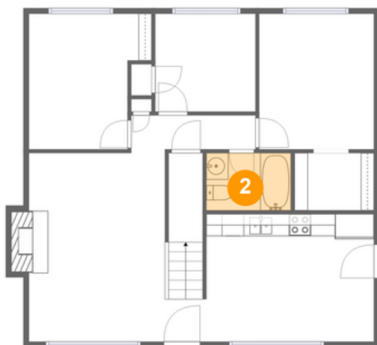
1 Floor 1 - Living Room



Dimensions: 16'1" x 17'5"
Area: 276 sq. ft
Counted as Living Area:
Yes

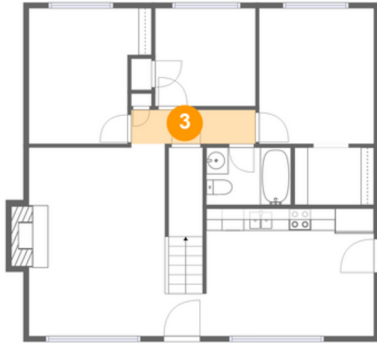
Heated: Yes
Finished: Yes
Enclosed: Yes
Contiguous:
Yes Permitted:
Yes Wet Space:
No Addition:
No Conversion:
No

2 Floor 1 - Bath



Dimensions: 7'8" x 5'2"
Area: 40 sq. ft
Counted as Living Area:
Yes

Heated: Yes
Finished: Yes
Enclosed: Yes
Contiguous:
Yes
Permitted: Yes
Wet Space: Yes
Addition: No
Conversion: No

**5926 138th Street Southeast, Silver Firs, Everett,
Snohomish County, Washington, United States,****3 Floor 1 - Hall**

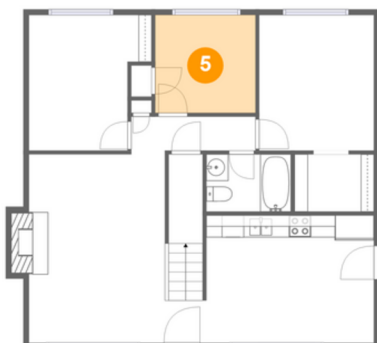
Dimensions: 11'3" x 3'1"
Area: 35 sq. ft
Counted as Living Area:
Yes

Heated: Yes
Finished: Yes
Enclosed: Yes
Contiguous:
Yes Permitted:
Yes Wet Space:
No Addition:
No Conversion:
No

4 Floor 1 - Kitchen

Dimensions: 15'2" x 11'7"
Area: 175 sq. ft
Counted as Living Area:
Yes

Heated: Yes
Finished: Yes
Enclosed: Yes
Contiguous:
Yes Permitted:
Yes Wet Space:
No Addition:
No Conversion:
No

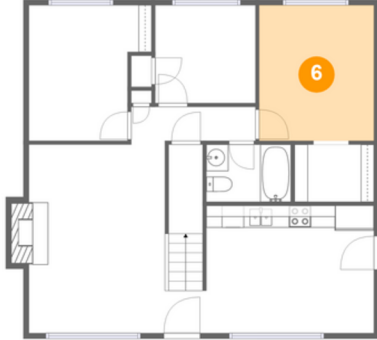
5 Floor 1 - Bedroom

Dimensions: 9'1" x 8'10"
Area: 80 sq. ft
Counted as Living Area:
Yes

Heated: Yes
Finished: Yes
Enclosed: Yes
Contiguous:
Yes Permitted:
Yes Wet Space:
No Addition:
No Conversion:
No

5926 138th Street Southeast, Silver Firs, Everett, Snohomish County, Washington, United States,

6 Floor 1 - Primary Room



Dimensions: 10'5" x 12'3"
Area: 127 sq. ft
Counted as Living Area:
Yes

Heated: Yes
Finished: Yes
Enclosed: Yes
Contiguous:
Yes Permitted:
Yes Wet Space:
No Addition:
No Conversion:
No

7 Floor 1 - Bedroom



Dimensions: 11'1" x 12'3"
Area: 119 sq. ft
Counted as Living Area:
Yes

Heated: Yes
Finished: Yes
Enclosed: Yes
Contiguous:
Yes Permitted:
Yes Wet Space:
No Addition:
No Conversion:
No

8 Floor 1 - W.i.c.

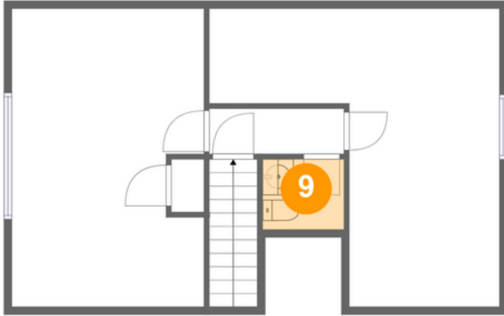


Dimensions: 7'2" x 5'2"
Area: 37 sq. ft
Counted as Living Area:
Yes

Heated: Yes
Finished: Yes
Enclosed: Yes
Contiguous:
Yes Permitted:
Yes Wet Space:
No Addition:
No Conversion:
No

**5926 138th Street Southeast, Silver Firs, Everett,
Snohomish County, Washington, United States,**

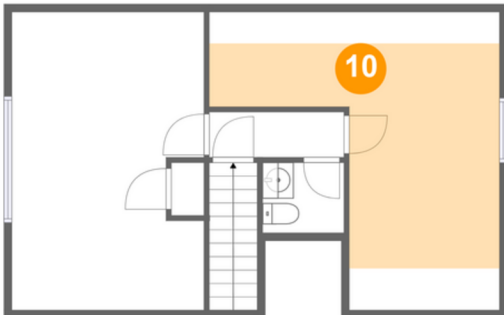
9 Floor 2 - Wc



Dimensions: 5'3" x 4'6"
Area: 23 sq. ft
Counted as Living Area: No

Heated: Yes
Finished: Yes
Enclosed: Yes
Contiguous: Yes
Permitted: Yes
Wet Space: Yes
Addition: No
Conversion: No

10 Floor 2 - Bonus ROOM/OFFICE/FLEXROOM



Dimensions: 18'7" x 19'1"
Area: 175 sq. ft
Counted as Living Area:
Yes

Heated: Yes
Finished: Yes
Enclosed: Yes
Contiguous:
Yes Permitted:
Yes Wet Space:
No Addition:
No Conversion:
No

11 Floor 2 - Primary Bedroom

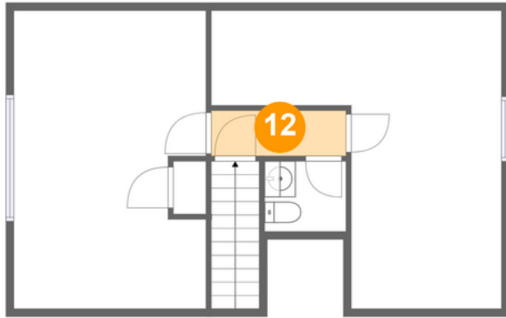


Dimensions: 12'4" x 19'1"
Area: 168 sq. ft
Counted as Living Area:
Yes

Heated: Yes
Finished: Yes
Enclosed: Yes
Contiguous:
Yes Permitted:
Yes Wet Space:
No Addition:
No Conversion:
No

**5926 138th Street Southeast, Silver Firs, Everett,
Snohomish County, Washington, United States,**

12 Floor 2 - Hall



Dimensions: 8'7" x 2'10"
Area: 25 sq. ft
Counted as Living Area:
Yes

Heated: Yes
Finished: Yes
Enclosed: Yes
Contiguous:
Yes Permitted:
Yes Wet Space:
No Addition:
No Conversion:
No