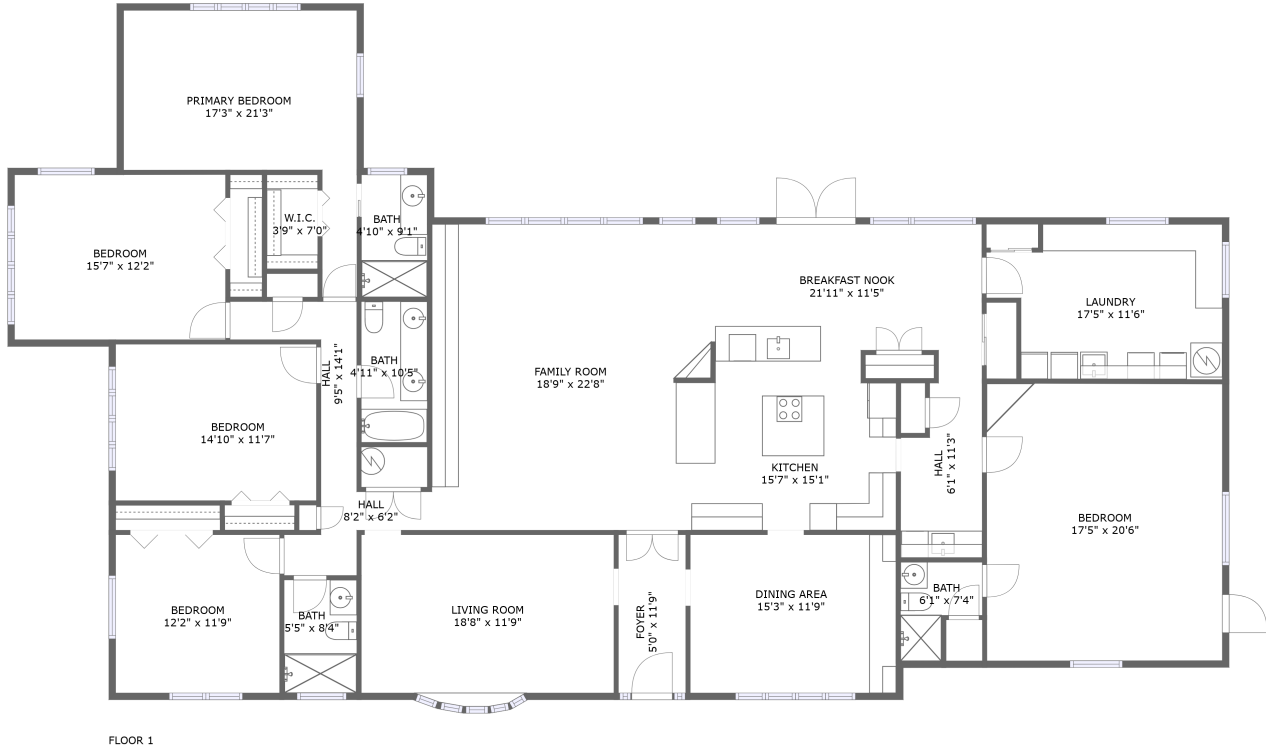



1829 Nottingham Lane, Clearwater, Pinellas County, Florida, United States, 33764



Property Summary

 **0** garages

 **5** bedrooms

 **4** bathrooms

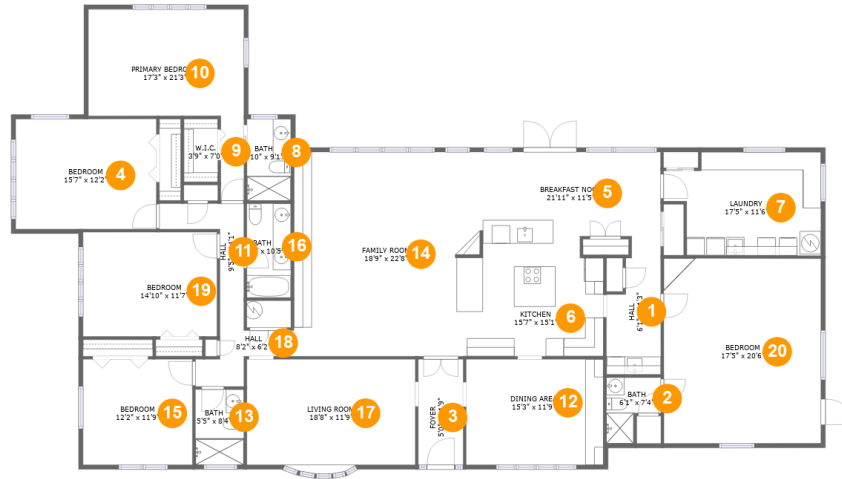
 **0** half baths

 **1** floors

 **3,316** Gross Living Area sqft

 **3,316** total sqft

1829 Nottingham Lane, Clearwater, Pinellas County, Florida, United States, 33764



Room Dimensions

Floor 1

Total sqft: 3316

Living area: 3316

| # | Room name | Dimensions | Area (sqft) | Counted as Living Area |
|----|-----------------|----------------|-------------|------------------------|
| 1 | Hall | 6'1" x 11'3" | 70 sq. ft | Yes |
| 2 | Bath | 6'1" x 7'4" | 34 sq. ft | Yes |
| 3 | Foyer | 5'0" x 11'9" | 58 sq. ft | Yes |
| 4 | Bedroom | 15'7" x 12'2" | 191 sq. ft | Yes |
| 5 | Breakfast Nook | 21'11" x 11'5" | 188 sq. ft | Yes |
| 6 | Kitchen | 15'7" x 15'1" | 224 sq. ft | Yes |
| 7 | Laundry | 17'5" x 11'6" | 176 sq. ft | Yes |
| 8 | Bath | 4'10" x 9'1" | 44 sq. ft | Yes |
| 9 | W.i.c. | 3'9" x 7'0" | 26 sq. ft | Yes |
| 10 | Primary Bedroom | 17'3" x 21'3" | 228 sq. ft | Yes |
| 11 | Hall | 9'5" x 14'1" | 56 sq. ft | Yes |

Scan captured on Mon, 01 Jul 2024 16:29:39 GMT

Information is calculated by CubiCasa technology; deemed highly reliable but not guaranteed.

**1829 Nottingham Lane, Clearwater, Pinellas
County, Florida, United States, 33764**

| # | Room name | Dimensions | Area (sqft) | Counted as Living Area |
|----|-------------|----------------|-------------|------------------------|
| 12 | Dining Area | 15'3" x 11'9" | 178 sq. ft | Yes |
| 13 | Bath | 5'5" x 8'4" | 45 sq. ft | Yes |
| 14 | Family Room | 18'9" x 22'8" | 425 sq. ft | Yes |
| 15 | Bedroom | 12'2" x 11'9" | 142 sq. ft | Yes |
| 16 | Bath | 4'11" x 10'5" | 51 sq. ft | Yes |
| 17 | Living Room | 18'8" x 11'9" | 225 sq. ft | Yes |
| 18 | Hall | 8'2" x 6'2" | 40 sq. ft | Yes |
| 19 | Bedroom | 14'10" x 11'7" | 172 sq. ft | Yes |
| 20 | Bedroom | 17'5" x 20'6" | 358 sq. ft | Yes |

1829 Nottingham Lane, Clearwater, Pinellas County, Florida, United States, 33764

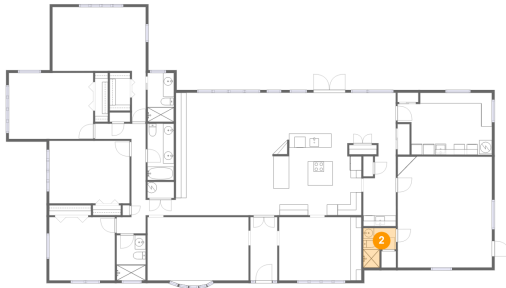
1 Floor 1 - Hall



Dimensions: 6'1" x 11'3"
Area: 70 sq. ft
Counted as Living Area:
Yes

Heated: Yes
Finished: Yes
Enclosed: Yes
Contiguous:
Yes
Permitted: Yes
Wet Space: No
Addition: No
Conversion: No

2 Floor 1 - Bath

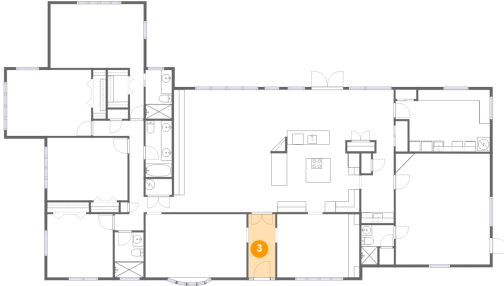


Dimensions: 6'1" x 7'4"
Area: 34 sq. ft
Counted as Living Area:
Yes

Heated: Yes
Finished: Yes
Enclosed: Yes
Contiguous:
Yes
Permitted: Yes
Wet Space: Yes
Addition: No
Conversion: No

1829 Nottingham Lane, Clearwater, Pinellas County, Florida, United States, 33764

3 Floor 1 - Foyer



Dimensions: 5'0" x 11'9"
Area: 58 sq. ft
Counted as Living Area:
Yes

Heated: Yes
Finished: Yes
Enclosed: Yes
Contiguous:
Yes
Permitted: Yes
Wet Space: No
Addition: No
Conversion: No

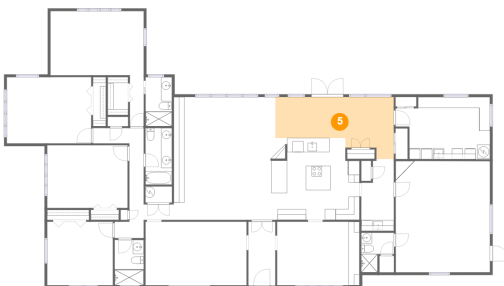
4 Floor 1 - Bedroom



Dimensions: 15'7" x 12'2"
Area: 191 sq. ft
Counted as Living Area:
Yes

Heated: Yes
Finished: Yes
Enclosed: Yes
Contiguous:
Yes
Permitted: Yes
Wet Space: No
Addition: No
Conversion: No

5 Floor 1 - Breakfast Nook

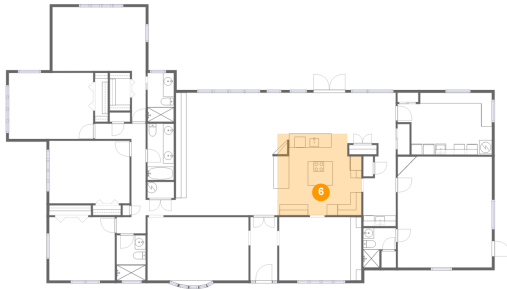


Dimensions: 21'11" x 11'5"
Area: 188 sq. ft
Counted as Living Area:
Yes

Heated: Yes
Finished: Yes
Enclosed: Yes
Contiguous:
Yes
Permitted: Yes
Wet Space: No
Addition: No
Conversion: No

1829 Nottingham Lane, Clearwater, Pinellas County, Florida, United States, 33764

6 Floor 1 - Kitchen



Dimensions: 15'7" x 15'1"
Area: 224 sq. ft
Counted as Living Area:
Yes

Heated: Yes
Finished: Yes
Enclosed: Yes
Contiguous:
Yes
Permitted: Yes
Wet Space: No
Addition: No
Conversion: No

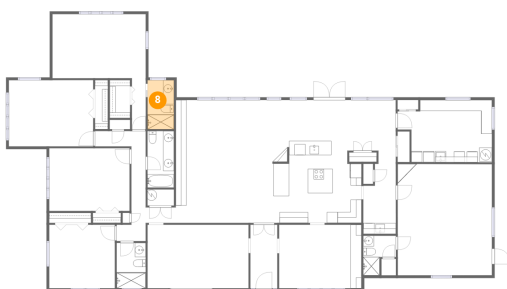
7 Floor 1 - Laundry



Dimensions: 17'5" x 11'6"
Area: 176 sq. ft
Counted as Living Area:
Yes

Heated: Yes
Finished: Yes
Enclosed: Yes
Contiguous:
Yes
Permitted: Yes
Wet Space: No
Addition: No
Conversion: No

8 Floor 1 - Bath



Dimensions: 4'10" x 9'1"
Area: 44 sq. ft
Counted as Living Area:
Yes

Heated: Yes
Finished: Yes
Enclosed: Yes
Contiguous:
Yes
Permitted: Yes
Wet Space: Yes
Addition: No
Conversion: No

1829 Nottingham Lane, Clearwater, Pinellas County, Florida, United States, 33764

9 Floor 1 - W.i.c.



Dimensions: 3'9" x 7'0"
Area: 26 sq. ft
Counted as Living Area:
Yes

Heated: Yes
Finished: Yes
Enclosed: Yes
Contiguous:
Yes
Permitted: Yes
Wet Space: No
Addition: No
Conversion: No

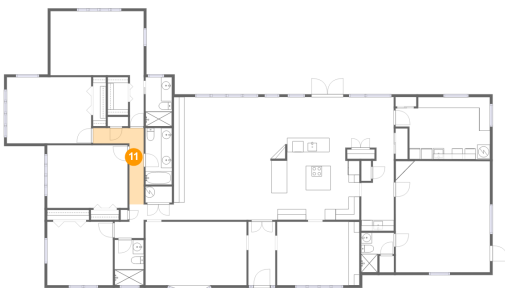
10 Floor 1 - Primary Bedroom



Dimensions: 17'3" x 21'3"
Area: 228 sq. ft
Counted as Living Area:
Yes

Heated: Yes
Finished: Yes
Enclosed: Yes
Contiguous:
Yes
Permitted: Yes
Wet Space: No
Addition: No
Conversion: No

11 Floor 1 - Hall



Dimensions: 9'5" x 14'1"
Area: 56 sq. ft
Counted as Living Area:
Yes

Heated: Yes
Finished: Yes
Enclosed: Yes
Contiguous:
Yes
Permitted: Yes
Wet Space: No
Addition: No
Conversion: No

1829 Nottingham Lane, Clearwater, Pinellas County, Florida, United States, 33764

12 Floor 1 - Dining Area



Dimensions: 15'3" x 11'9"
Area: 178 sq. ft
Counted as Living Area:
Yes

Heated: Yes
Finished: Yes
Enclosed: Yes
Contiguous:
Yes
Permitted: Yes
Wet Space: No
Addition: No
Conversion: No

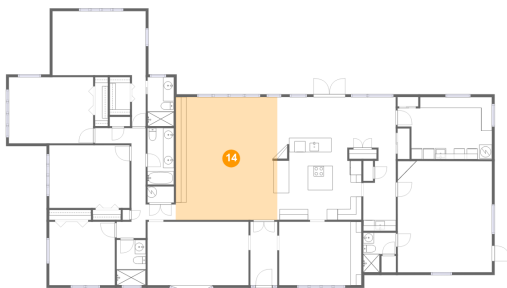
13 Floor 1 - Bath



Dimensions: 5'5" x 8'4"
Area: 45 sq. ft
Counted as Living Area:
Yes

Heated: Yes
Finished: Yes
Enclosed: Yes
Contiguous:
Yes
Permitted: Yes
Wet Space: Yes
Addition: No
Conversion: No

14 Floor 1 - Family Room



Dimensions: 18'9" x 22'8"
Area: 425 sq. ft
Counted as Living Area:
Yes

Heated: Yes
Finished: Yes
Enclosed: Yes
Contiguous:
Yes
Permitted: Yes
Wet Space: No
Addition: No
Conversion: No

1829 Nottingham Lane, Clearwater, Pinellas County, Florida, United States, 33764

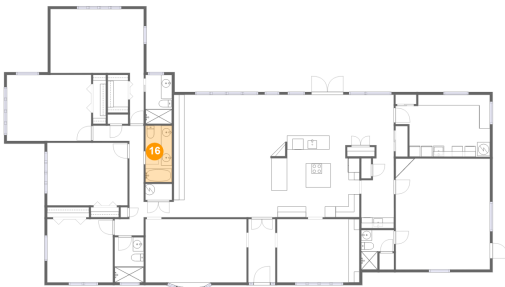
15 Floor 1 - Bedroom



Dimensions: 12'2" x 11'9"
Area: 142 sq. ft
Counted as Living Area:
Yes

Heated: Yes
Finished: Yes
Enclosed: Yes
Contiguous:
Yes
Permitted: Yes
Wet Space: No
Addition: No
Conversion: No

16 Floor 1 - Bath



Dimensions: 4'11" x 10'5"
Area: 51 sq. ft
Counted as Living Area:
Yes

Heated: Yes
Finished: Yes
Enclosed: Yes
Contiguous:
Yes
Permitted: Yes
Wet Space: Yes
Addition: No
Conversion: No

17 Floor 1 - Living Room



Dimensions: 18'8" x 11'9"
Area: 225 sq. ft
Counted as Living Area:
Yes

Heated: Yes
Finished: Yes
Enclosed: Yes
Contiguous:
Yes
Permitted: Yes
Wet Space: No
Addition: No
Conversion: No

1829 Nottingham Lane, Clearwater, Pinellas County, Florida, United States, 33764

18 Floor 1 - Hall



Dimensions: 8'2" x 6'2"
Area: 40 sq. ft
Counted as Living Area:
Yes

Heated: Yes
Finished: Yes
Enclosed: Yes
Contiguous:
Yes
Permitted: Yes
Wet Space: No
Addition: No
Conversion: No

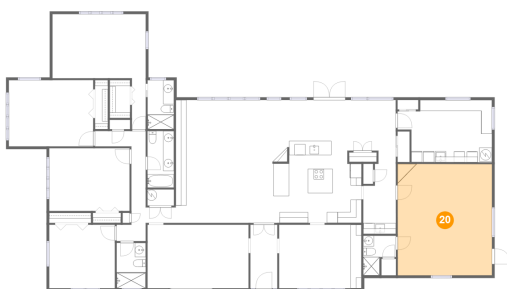
19 Floor 1 - Bedroom



Dimensions: 14'10" x 11'7"
Area: 172 sq. ft
Counted as Living Area:
Yes

Heated: Yes
Finished: Yes
Enclosed: Yes
Contiguous:
Yes
Permitted: Yes
Wet Space: No
Addition: No
Conversion: No

20 Floor 1 - Bedroom



Dimensions: 17'5" x 20'6"
Area: 358 sq. ft
Counted as Living Area:
Yes

Heated: Yes
Finished: Yes
Enclosed: Yes
Contiguous:
Yes
Permitted: Yes
Wet Space: No
Addition: No
Conversion: No