

Home report

Imperial Drive 12221
Seminole

Highlights



1 Kitchen



2 Living room



3 Bedroom



2 Bath



25 Doors



6 Windows

Nearby services Data source: Google Maps



Park Blvd + Amber Ct, 0.4 mi



Publix Super Market on 113th Street, 0.9 mi



QuestDental, 1.0 mi



Richard O. Jacobson Technical High School at Seminole, 0.4 mi

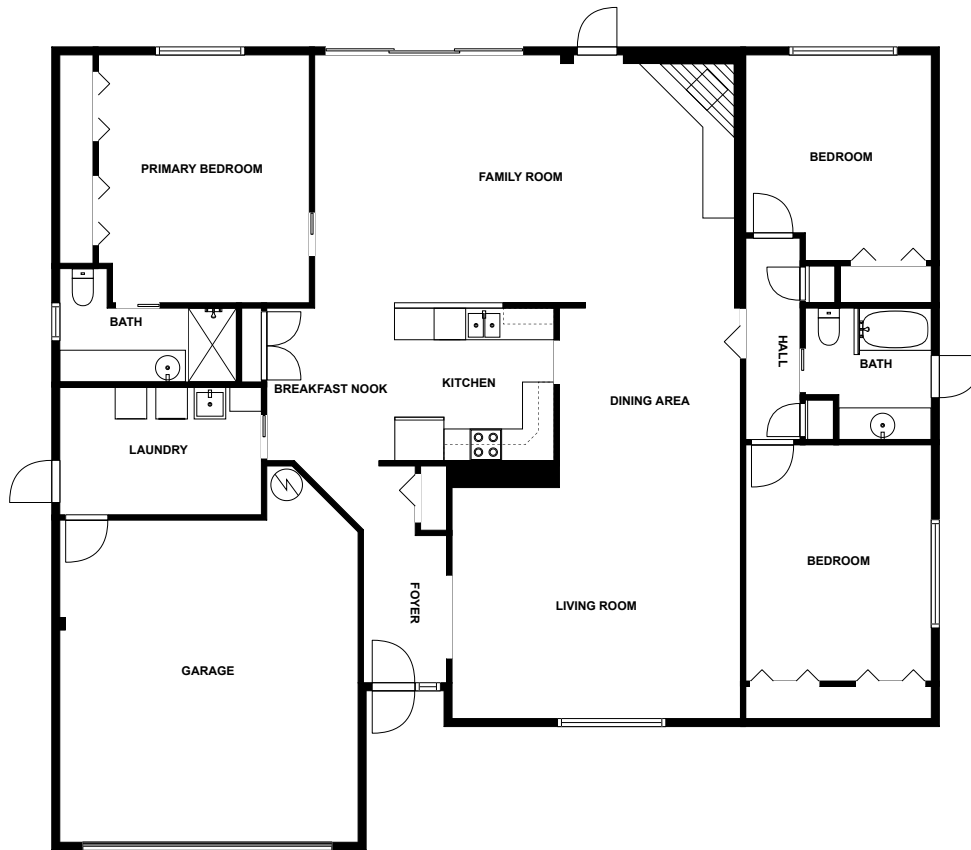


Southie Coffee, 0.7 mi



Bay Pines VA Hospital Helipad, 3.1 mi

Floor plan



fvm

SIZES AND DIMENSIONS ARE APPROXIMATE, ACTUAL MAY VARY.



Appendix 1: Data sheet

Bath - 2	Hall - 1	Utility - 1
Utility - Laundry - 1	Bedroom - 3	Bedroom - Master - 1
Garage - 1	Dining - 1	Dining - Open - 1
LivingRoom - 2	LivingRoom - Family - 1	Entry - 1
Entry - Foyer - 1	Kitchen - 1	Nook - 1
Nook - Breakfast - 1		