

3503 Royal Oak Ct, Champaign, Illinois, United States

Gross Living Area: 2642 sq. ft

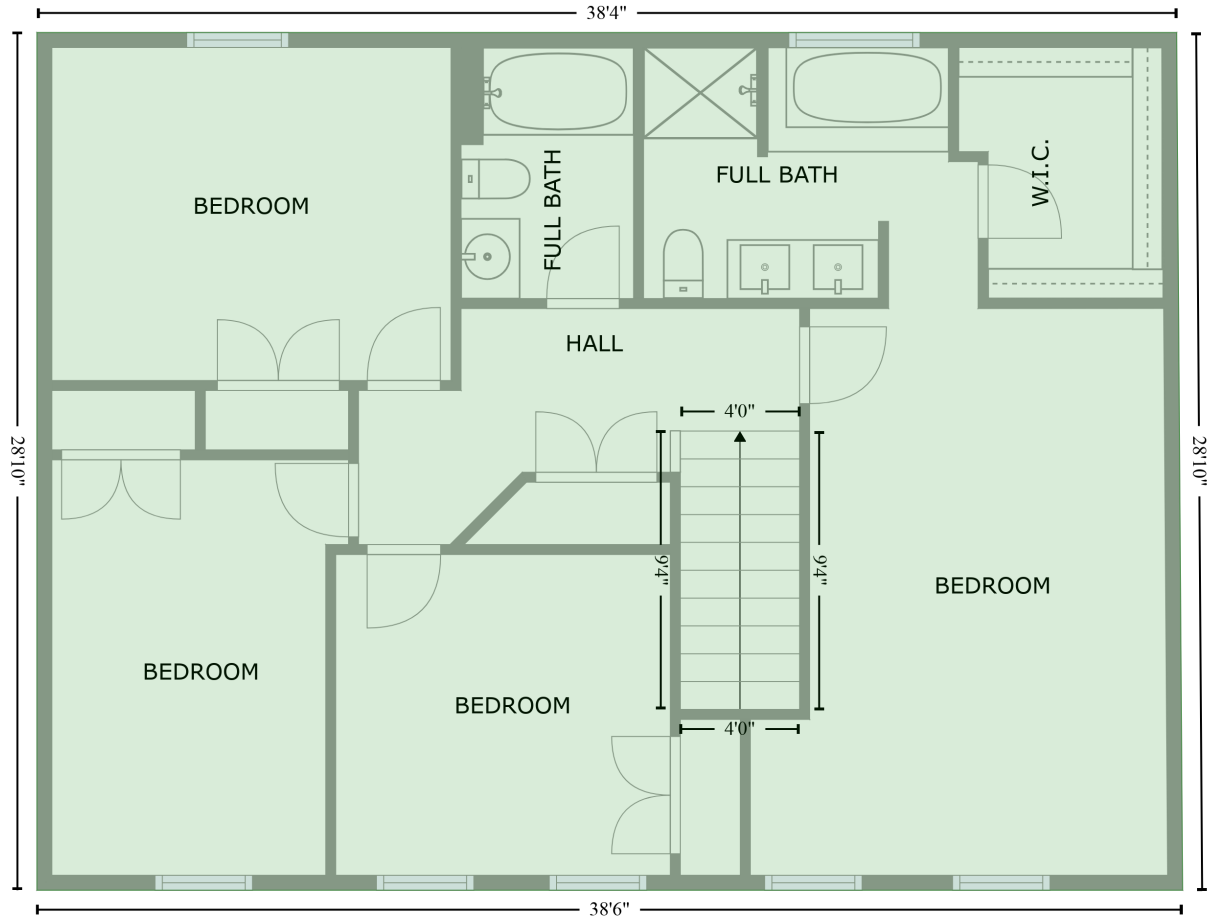


Space	Area (sq. ft)	Calculation
FLOOR 1 (Living area)	1535	Coordinate Polygon Area Algorithm using inches $-((701.3 + 701.3) * (-1.4 - 151.2) + (701.3 + 561.2) * (151.2 - 151.2) + (561.2 + 561.2) * (151.2 - 441.7) + (561.2 + 486.3) * (441.7 - 441.7) + (486.3 + 486.3) * (441.7 - 477.1) + (486.3 + 24.5) * (477.1 - 477.1) + (24.5 + 24.5) * (477.1 - 255.6) + (24.5 + 24.5) * (255.6 - 131.2) + (24.5 + 30.8) * (131.2 - 131.2) + (30.8 + 48) * (131.2 - 105.7) + (48 + 184.3) * (105.7 - 105.7) + (184.3 + 199) * (105.7 - 131.2) + (199 + 245.9) * (131.2 - 131.2) + (245.9 + 271.4) * (131.2 - 105.7) + (271.4 + 316.8) * (105.7 - 105.7) + (316.8 + 342.4) * (105.7 - 131.2) + (342.4 + 478.3) * (131.2 - 131.2) + (478.3 + 478.3) * (131.2 - -1.4) + (478.3 + 701.3) * (-1.4 - -1.4)) * 0.5 * 0.00694$
GARAGE (Non-living area)	590	$-((801.1 + 801.1) * (-1.4 - 441.7) + (801.1 + 561.2) * (441.7 - 441.7) + (561.2 + 561.2) * (441.7 - 151.2) + (561.2 + 701.3) * (151.2 - 151.2) + (701.3 + 701.3) * (151.2 - -1.4) + (701.3 + 801.1) * (-1.4 - -1.4)) * 0.5 * 0.00694$
FIREPLACE (Non-living area)	13	$-((24.5 + 24.5) * (190.1 - 261.6) + (24.5 + -1.3) * (261.6 - 261.6) + (-1.3 + -1.3) * (261.6 - 190.1) + (-1.3 + 24.5) * (190.1 - 190.1)) * 0.5 * 0.00694$

3503 Royal Oak Ct, Champaign, Illinois, United States

Gross Living Area: 2642 sq. ft

FLOOR 2
[AREA: 1107]



Space	Area (sq. ft)	Calculation <small>Coordinate Polygon Area Algorithm using inches</small>
FLOOR 2 (Living area)	1107	$-((466.7 + 469.1) * (136.8 - 482.7) + (469.1 + 7) * (482.7 - 482.7) + (7 + 7) * (482.7 - 136.8) + (7 + 466.7) * (136.8 - 136.8)) * 0.5 * 0.00694$