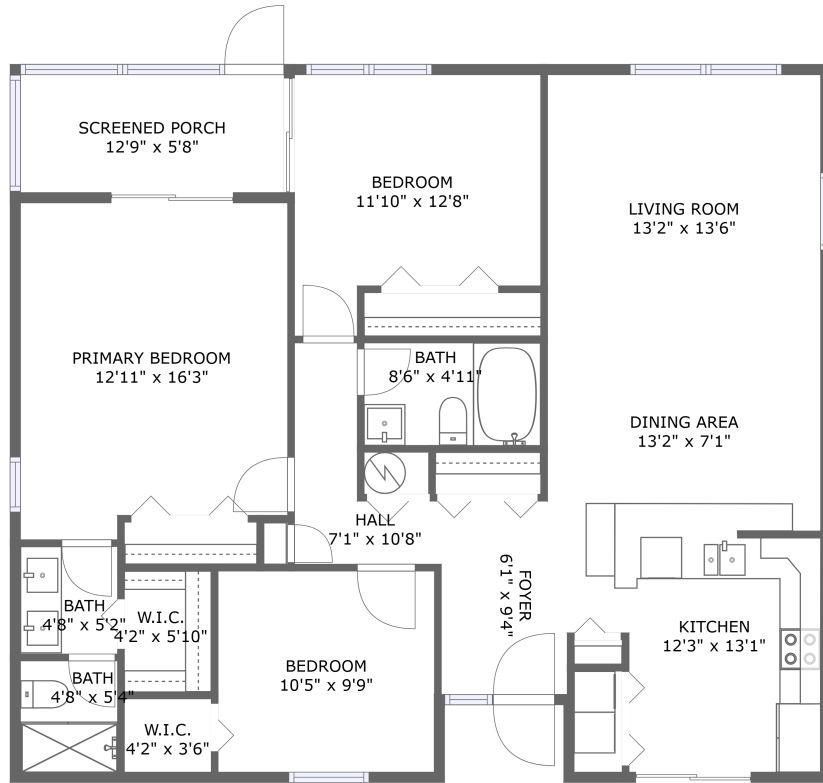


# 2924 Star Apple Court, Strathmore Gate East, Palm Harbor, Pinellas County, Florida, United



FLOOR 1

## Property Summary



1 floors



3 bedrooms



2 bathrooms



1,354 total sqft

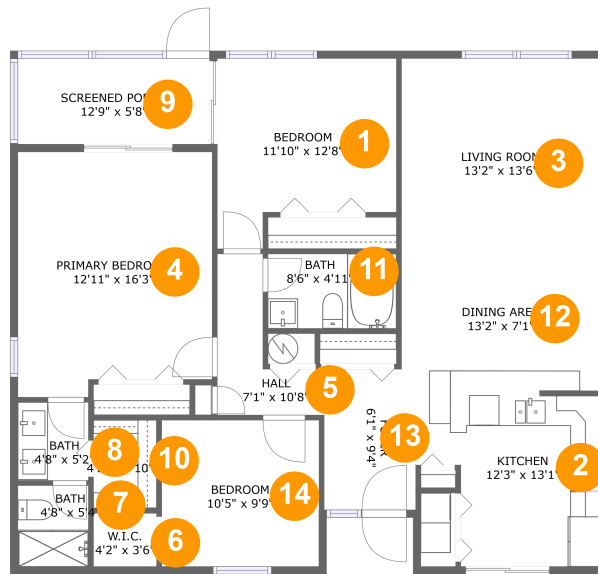


0 garages



1,272 Gross Living Area sqft

# 2924 Star Apple Court, Strathmore Gate East, Palm Harbor, Pinellas County, Florida, United



## Room Dimensions

Floor 1

Total sqft: 1354

Living area: 1272

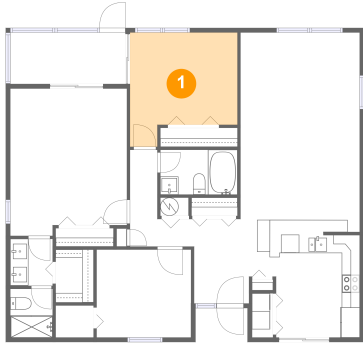
#	Room name	Dimensions	Area (sqft)	Counted as Living Area
1	Bedroom	11'10" x 12'8"	129 sq. ft	Yes
2	Kitchen	12'3" x 13'1"	139 sq. ft	Yes
3	Living Room	13'2" x 13'6"	178 sq. ft	Yes
4	Primary Bedroom	12'11" x 16'3"	200 sq. ft	Yes
5	Hall	7'1" x 10'8"	45 sq. ft	Yes
6	W.i.c.	4'2" x 3'6"	15 sq. ft	Yes
7	Bath	4'8" x 5'4"	25 sq. ft	Yes
8	Bath	4'8" x 5'2"	24 sq. ft	Yes
9	Screened Porch	12'9" x 5'8"	72 sq. ft	No
10	W.i.c.	4'2" x 5'10"	24 sq. ft	Yes
11	Bath	8'6" x 4'11"	42 sq. ft	Yes

**2924 Star Apple Court, Strathmore Gate East,  
Palm Harbor, Pinellas County, Florida, United**

#	Room name	Dimensions	Area (sqft)	Counted as Living Area
12	Dining Area	13'2" x 7'1"	93 sq. ft	Yes
13	Foyer	6'1" x 9'4"	57 sq. ft	Yes
14	Bedroom	10'5" x 9'9"	101 sq. ft	Yes

# 2924 Star Apple Court, Strathmore Gate East, Palm Harbor, Pinellas County, Florida, United

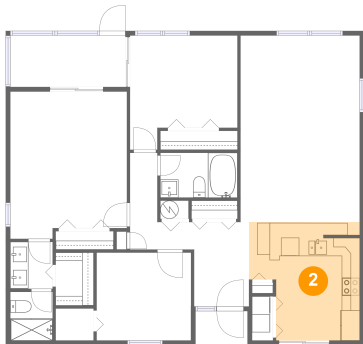
## 1 Floor 1 - Bedroom



Dimensions: 11'10" x 12'8"  
Area: 129 sq. ft  
Counted as Living Area:  
Yes

Heated: Yes  
Finished: Yes  
Enclosed: Yes  
Contiguous:  
Yes  
Permitted: Yes  
Wet Space: No  
Addition: No  
Conversion: No

## 2 Floor 1 - Kitchen

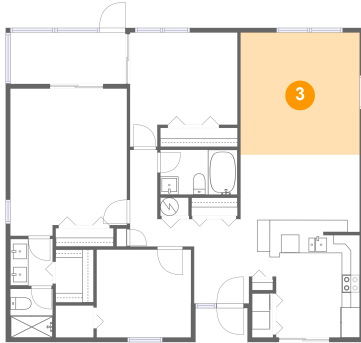


Dimensions: 12'3" x 13'1"  
Area: 139 sq. ft  
Counted as Living Area:  
Yes

Heated: Yes  
Finished: Yes  
Enclosed: Yes  
Contiguous:  
Yes  
Permitted: Yes  
Wet Space: No  
Addition: No  
Conversion: No

# 2924 Star Apple Court, Strathmore Gate East, Palm Harbor, Pinellas County, Florida, United

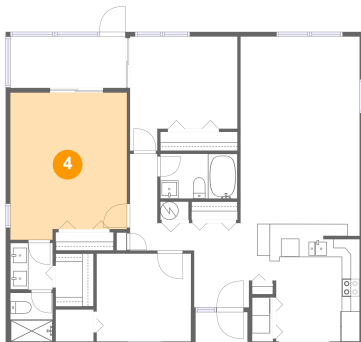
## 3 Floor 1 - Living Room



Dimensions: 13'2" x 13'6"  
Area: 178 sq. ft  
Counted as Living Area:  
Yes

Heated: Yes  
Finished: Yes  
Enclosed: Yes  
Contiguous:  
Yes  
Permitted: Yes  
Wet Space: No  
Addition: No  
Conversion: No

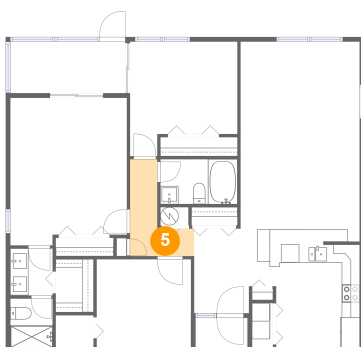
## 4 Floor 1 - Primary Bedroom



Dimensions: 12'11" x 16'3"  
Area: 200 sq. ft  
Counted as Living Area:  
Yes

Heated: Yes  
Finished: Yes  
Enclosed: Yes  
Contiguous:  
Yes  
Permitted: Yes  
Wet Space: No  
Addition: No  
Conversion: No

## 5 Floor 1 - Hall

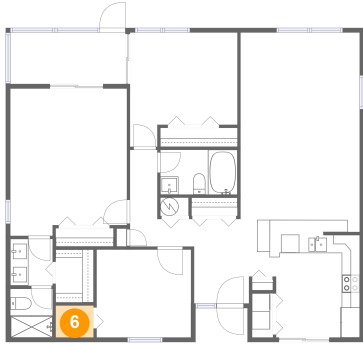


Dimensions: 7'1" x 10'8"  
Area: 45 sq. ft  
Counted as Living Area:  
Yes

Heated: Yes  
Finished: Yes  
Enclosed: Yes  
Contiguous:  
Yes  
Permitted: Yes  
Wet Space: No  
Addition: No  
Conversion: No

# 2924 Star Apple Court, Strathmore Gate East, Palm Harbor, Pinellas County, Florida, United

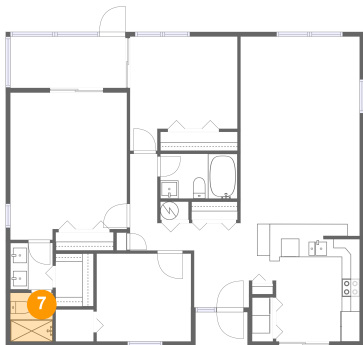
## 6 Floor 1 - W.i.c.



Dimensions: 4'2" x 3'6"  
Area: 15 sq. ft  
Counted as Living Area:  
Yes

Heated: Yes  
Finished: Yes  
Enclosed: Yes  
Contiguous:  
Yes  
Permitted: Yes  
Wet Space: No  
Addition: No  
Conversion: No

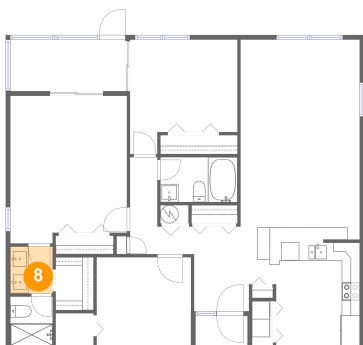
## 7 Floor 1 - Bath



Dimensions: 4'8" x 5'4"  
Area: 25 sq. ft  
Counted as Living Area:  
Yes

Heated: Yes  
Finished: Yes  
Enclosed: Yes  
Contiguous:  
Yes  
Permitted: Yes  
Wet Space: Yes  
Addition: No  
Conversion: No

## 8 Floor 1 - Bath

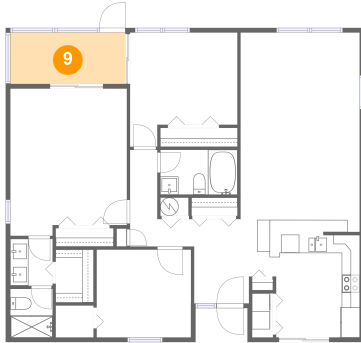


Dimensions: 4'8" x 5'2"  
Area: 24 sq. ft  
Counted as Living Area:  
Yes

Heated: Yes  
Finished: Yes  
Enclosed: Yes  
Contiguous:  
Yes  
Permitted: Yes  
Wet Space: Yes  
Addition: No  
Conversion: No

# 2924 Star Apple Court, Strathmore Gate East, Palm Harbor, Pinellas County, Florida, United

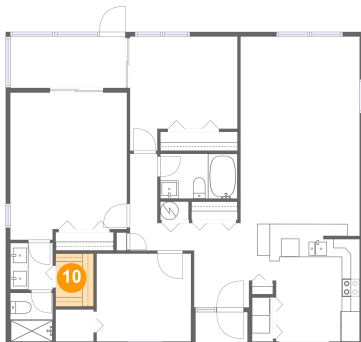
## 9 Floor 1 - Screened Porch



Dimensions: 12'9" x 5'8"  
Area: 72 sq. ft  
Counted as Living Area: No

Heated: No  
Finished: Yes  
Enclosed: No  
Contiguous: Yes  
Permitted: Yes  
Wet Space: No  
Addition: No  
Conversion: No

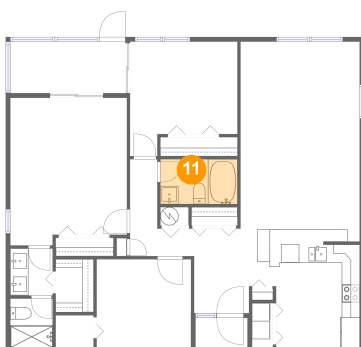
## 10 Floor 1 - W.i.c.



Dimensions: 4'2" x 5'10"  
Area: 24 sq. ft  
Counted as Living Area:  
Yes

Heated: Yes  
Finished: Yes  
Enclosed: Yes  
Contiguous:  
Yes  
Permitted: Yes  
Wet Space: No  
Addition: No  
Conversion: No

## 11 Floor 1 - Bath

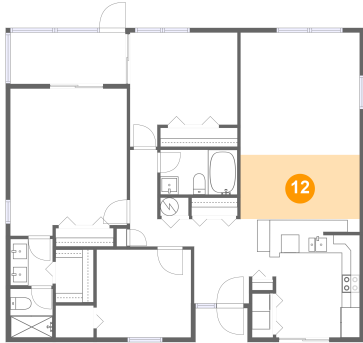


Dimensions: 8'6" x 4'11"  
Area: 42 sq. ft  
Counted as Living Area:  
Yes

Heated: Yes  
Finished: Yes  
Enclosed: Yes  
Contiguous:  
Yes  
Permitted: Yes  
Wet Space: Yes  
Addition: No  
Conversion: No

# 2924 Star Apple Court, Strathmore Gate East, Palm Harbor, Pinellas County, Florida, United

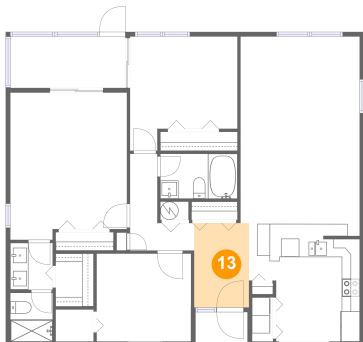
## 12 Floor 1 - Dining Area



Dimensions: 13'2" x 7'1"  
Area: 93 sq. ft  
Counted as Living Area:  
Yes

Heated: Yes  
Finished: Yes  
Enclosed: Yes  
Contiguous:  
Yes  
Permitted: Yes  
Wet Space: No  
Addition: No  
Conversion: No

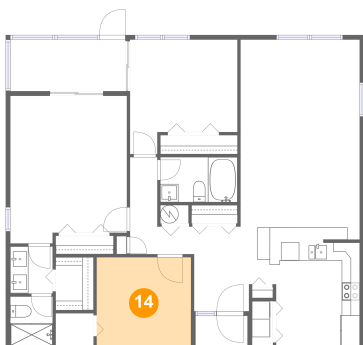
## 13 Floor 1 - Foyer



Dimensions: 6'1" x 9'4"  
Area: 57 sq. ft  
Counted as Living Area:  
Yes

Heated: Yes  
Finished: Yes  
Enclosed: Yes  
Contiguous:  
Yes  
Permitted: Yes  
Wet Space: No  
Addition: No  
Conversion: No

## 14 Floor 1 - Bedroom



Dimensions: 10'5" x 9'9"  
Area: 101 sq. ft  
Counted as Living Area:  
Yes

Heated: Yes  
Finished: Yes  
Enclosed: Yes  
Contiguous:  
Yes  
Permitted: Yes  
Wet Space: No  
Addition: No  
Conversion: No