



Home report


2102 Berkley Avenue Southwest, Raleigh Court, Roanoke,
Roanoke city, Virginia, United States, 24015




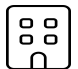
Property summary


 **0** Garages


 **3** Bedrooms

 **1** Bathrooms

 **0** Half baths

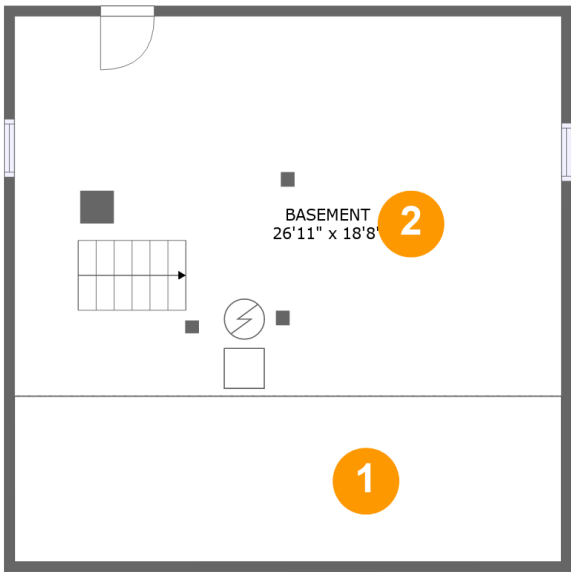
 **4** Floors

 **1,344** Gross living area sqft

 **3,204** Total sqft

Home report

2102 Berkley Avenue Southwest, Raleigh Court, Roanoke,
Roanoke city, Virginia, United States, 24015



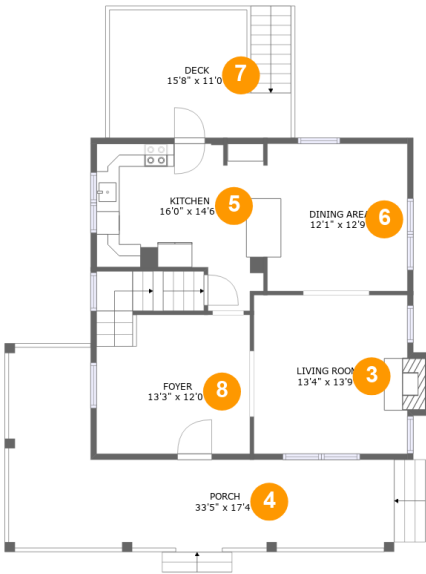
Room dimensions

Floor 1 Total sqft: 777 Living area: 0

#		Max Dimensions	sqft	Included
1	Crawl Space	26'11" x 8'2"	219 sq. ft	No
2	Basement	26'11" x 18'8"	503 sq. ft	No

Home report

2102 Berkley Avenue Southwest, Raleigh Court, Roanoke,
Roanoke city, Virginia, United States, 24015



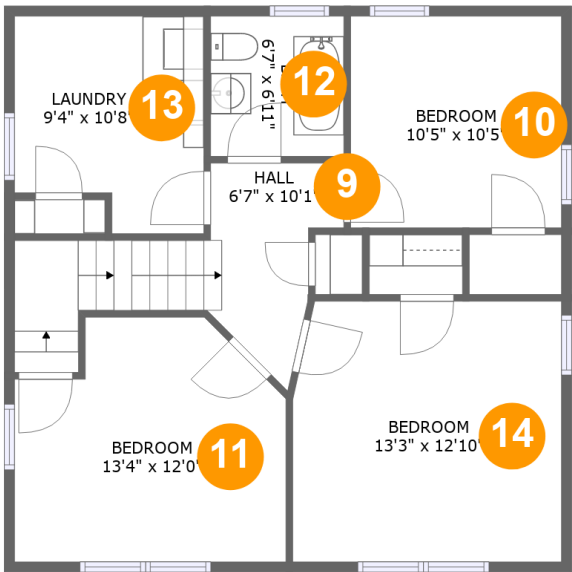
Room dimensions

Floor 2 Total sqft: 1285 Living area: 567

#		Max Dimensions	sqft	Included
3	Living Room	13'4" x 13'9"	190 sq. ft	Yes
4	Porch	33'5" x 17'4"	325 sq. ft	No
5	Kitchen	16'0" x 14'6"	179 sq. ft	Yes
6	Dining Area	12'1" x 12'9"	149 sq. ft	Yes
7	Deck	15'8" x 11'0"	174 sq. ft	No
8	Foyer	13'3" x 12'0"	193 sq. ft	No

Home report

2102 Berkley Avenue Southwest, Raleigh Court, Roanoke,
Roanoke city, Virginia, United States, 24015



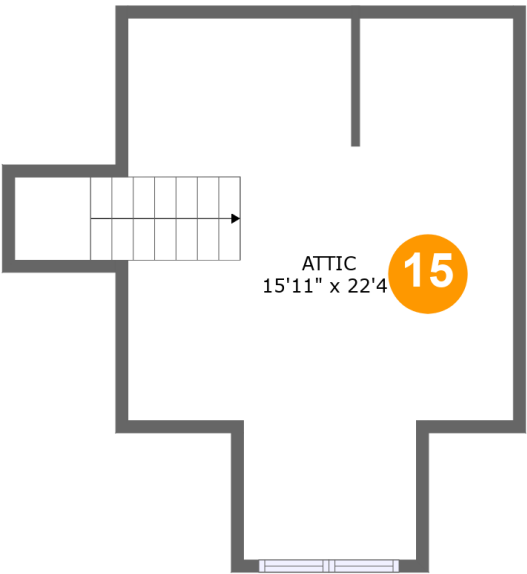
Room dimensions

Floor 3 Total sqft: 777 Living area: 777

#		Max Dimensions	sqft	Included
9	Hall	6'7" x 10'1"	93 sq. ft	Yes
10	Bedroom	10'5" x 10'5"	108 sq. ft	Yes
11	Bedroom	13'4" x 12'0"	142 sq. ft	Yes
12	Bath	6'7" x 6'11"	45 sq. ft	Yes
13	Laundry	9'4" x 10'8"	90 sq. ft	Yes
14	Bedroom	13'3" x 12'10"	167 sq. ft	Yes

Home report

2102 Berkley Avenue Southwest, Raleigh Court, Roanoke,
Roanoke city, Virginia, United States, 24015



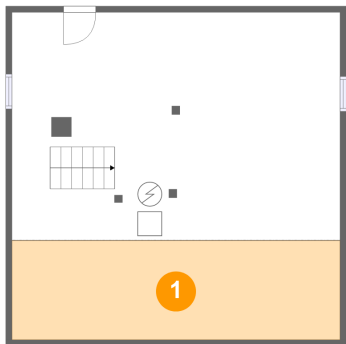
Room dimensions

Floor 4 Total sqft: 365 Living area: 0

#		Max Dimensions	sqft	Included
15	Attic	15'11" x 22'4"	279 sq. ft	No

2102 Berkley Avenue Southwest, Raleigh Court, Roanoke,
Roanoke city, Virginia, United States, 24015

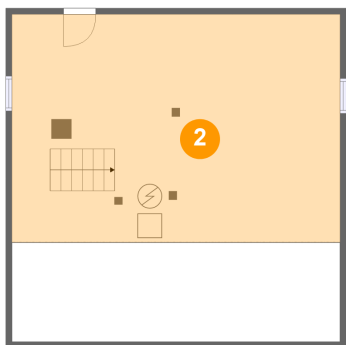
1 Floor 1 - Crawl Space



Max Dimensions: 26'11" x 8'2"
Calculated Area: 219 sq. ft
Included: No

Heated: No
Finished: No
Enclosed: No
Contiguous: Yes
Permitted: No
Wet space: No
Addition: No
Conversion: No

2 Floor 1 - Basement

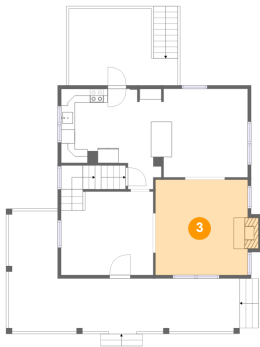


Max Dimensions: 26'11" x 18'8"
Calculated Area: 503 sq. ft
Included: No

Heated: Yes
Finished: No
Enclosed: Yes
Contiguous: Yes
Permitted: Yes
Wet space: No
Addition: No
Conversion: No

2102 Berkley Avenue Southwest, Raleigh Court, Roanoke,
Roanoke city, Virginia, United States, 24015

3 Floor 2 - Living Room



Max Dimensions: 13'4" x 13'9"
Calculated Area: 190 sq. ft
Included: Yes

Heated: Yes
Finished: Yes
Enclosed: Yes
Contiguous: Yes
Permitted: Yes
Wet space: No
Addition: No
Conversion: No

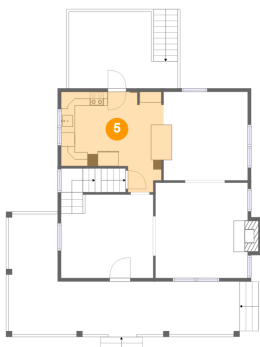
4 Floor 2 - Porch



Max Dimensions: 33'5" x 17'4"
Calculated Area: 325 sq. ft
Included: No

Heated: No
Finished: Yes
Enclosed: No
Contiguous: Yes
Permitted: Yes
Wet space: No
Addition: No
Conversion: No

5 Floor 2 - Kitchen

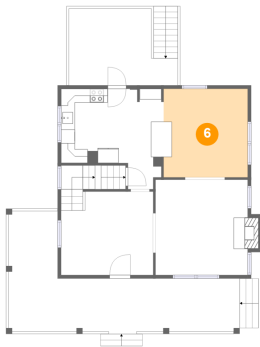


Max Dimensions: 16'0" x 14'6"
Calculated Area: 179 sq. ft
Included: Yes

Heated: Yes
Finished: Yes
Enclosed: Yes
Contiguous: Yes
Permitted: Yes
Wet space: No
Addition: No
Conversion: No

2102 Berkley Avenue Southwest, Raleigh Court, Roanoke,
Roanoke city, Virginia, United States, 24015

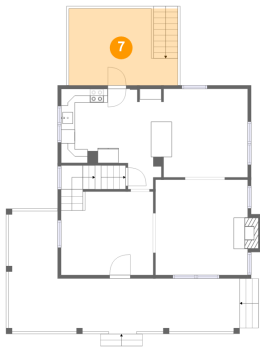
6 Floor 2 - Dining Area



Max Dimensions: 12'1" x 12'9"
Calculated Area: 149 sq. ft
Included: Yes

Heated: Yes
Finished: Yes
Enclosed: Yes
Contiguous: Yes
Permitted: Yes
Wet space: No
Addition: No
Conversion: No

7 Floor 2 - Deck



Max Dimensions: 15'8" x 11'0"
Calculated Area: 174 sq. ft
Included: No

Heated: No
Finished: Yes
Enclosed: No
Contiguous: Yes
Permitted: Yes
Wet space: No
Addition: No
Conversion: No

8 Floor 2 - Foyer



Max Dimensions: 13'3" x 12'0"
Calculated Area: 193 sq. ft
Included: No

Heated: Yes
Finished: No
Enclosed: Yes
Contiguous: Yes
Permitted: Yes
Wet space: No
Addition: No
Conversion: No

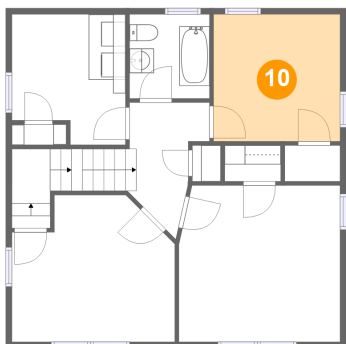
9 Floor 3 - Hall



Max Dimensions: 6'7" x 10'1"
Calculated Area: 93 sq. ft
Included: Yes

Heated: Yes
Finished: Yes
Enclosed: Yes
Contiguous: Yes
Permitted: Yes
Wet space: No
Addition: No
Conversion: No

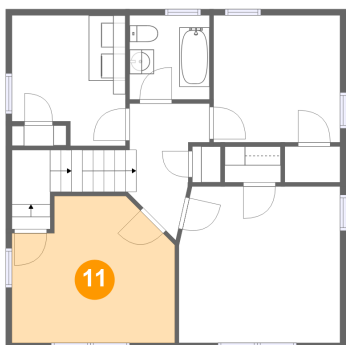
10 Floor 3 - Bedroom



Max Dimensions: 10'5" x 10'5"
Calculated Area: 108 sq. ft
Included: Yes

Heated: Yes
Finished: Yes
Enclosed: Yes
Contiguous: Yes
Permitted: Yes
Wet space: No
Addition: No
Conversion: No

11 Floor 3 - Bedroom

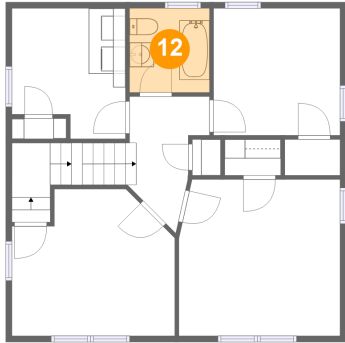


Max Dimensions: 13'4" x 12'0"
Calculated Area: 142 sq. ft
Included: Yes

Heated: Yes
Finished: Yes
Enclosed: Yes
Contiguous: Yes
Permitted: Yes
Wet space: No
Addition: No
Conversion: No

2102 Berkley Avenue Southwest, Raleigh Court, Roanoke,
Roanoke city, Virginia, United States, 24015

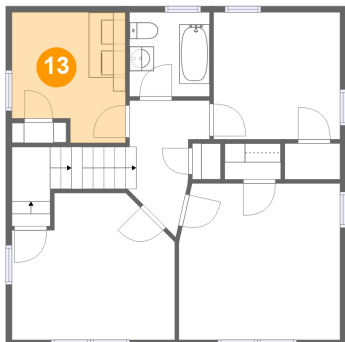
12 Floor 3 - Bath



Max Dimensions: 6'7" x 6'11"
Calculated Area: 45 sq. ft
Included: Yes

Heated: Yes
Finished: Yes
Enclosed: Yes
Contiguous: Yes
Permitted: Yes
Wet space: Yes
Addition: No
Conversion: No

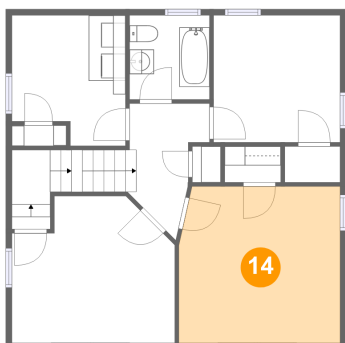
13 Floor 3 - Laundry



Max Dimensions: 9'4" x 10'8"
Calculated Area: 90 sq. ft
Included: Yes

Heated: Yes
Finished: Yes
Enclosed: Yes
Contiguous: Yes
Permitted: Yes
Wet space: No
Addition: No
Conversion: No

14 Floor 3 - Bedroom

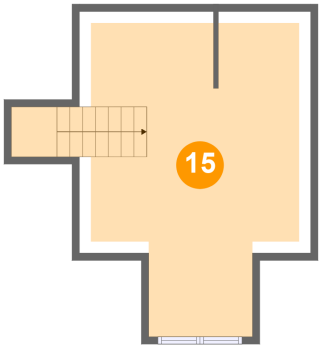


Max Dimensions: 13'3" x 12'10"
Calculated Area: 167 sq. ft
Included: Yes

Heated: Yes
Finished: Yes
Enclosed: Yes
Contiguous: Yes
Permitted: Yes
Wet space: No
Addition: No
Conversion: No

2102 Berkley Avenue Southwest, Raleigh Court, Roanoke,
Roanoke city, Virginia, United States, 24015

15 Floor 4 - Attic



Max Dimensions: 15'11" x 22'4"
Calculated Area: 279 sq. ft
Included: No

Heated: No
Finished: No
Enclosed: Yes
Contiguous: Yes
Permitted: Yes
Wet space: No
Addition: No
Conversion: No