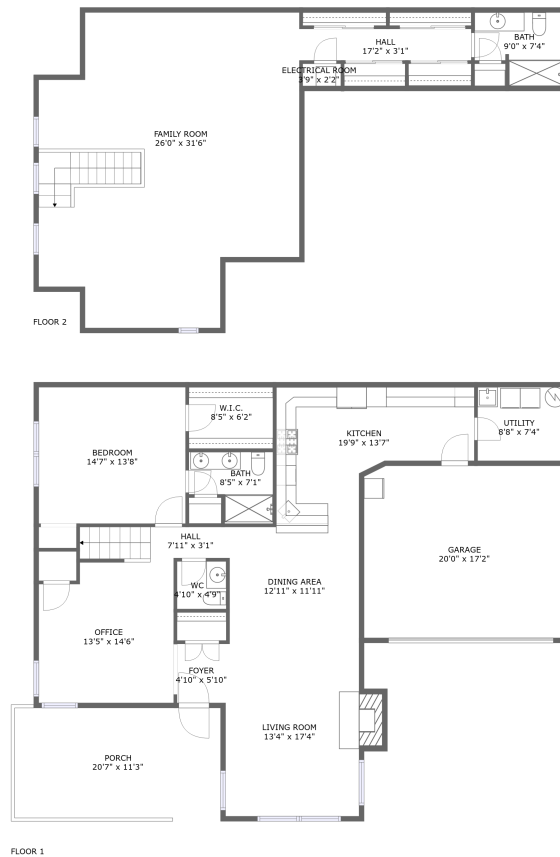


6354 Jefferson Pointe Cir, Clairton, PA, US



Property summary

 **1** Garages


 **1** Bedrooms

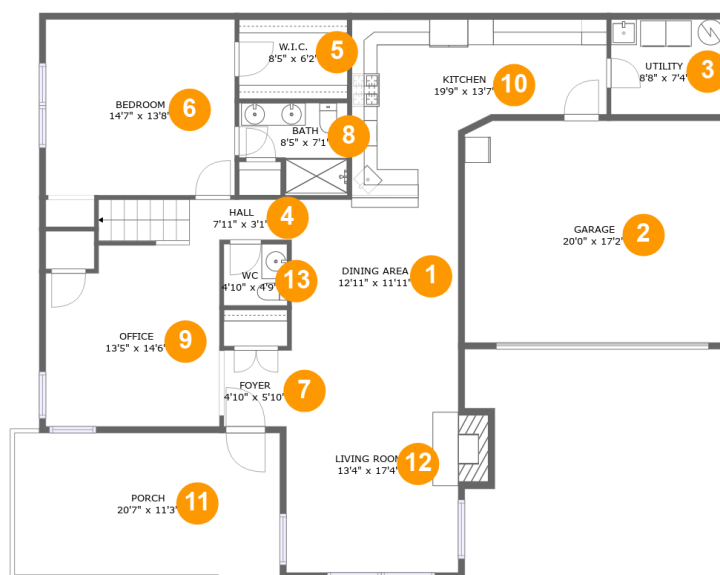
 **2** Bathrooms

 **1** Half baths

 **2** Floors

 **2,277**
Gross living
area sqft

 **2,981**
Total sqft

6354 Jefferson Pointe Cir, Clairton, PA, US**Room dimensions**

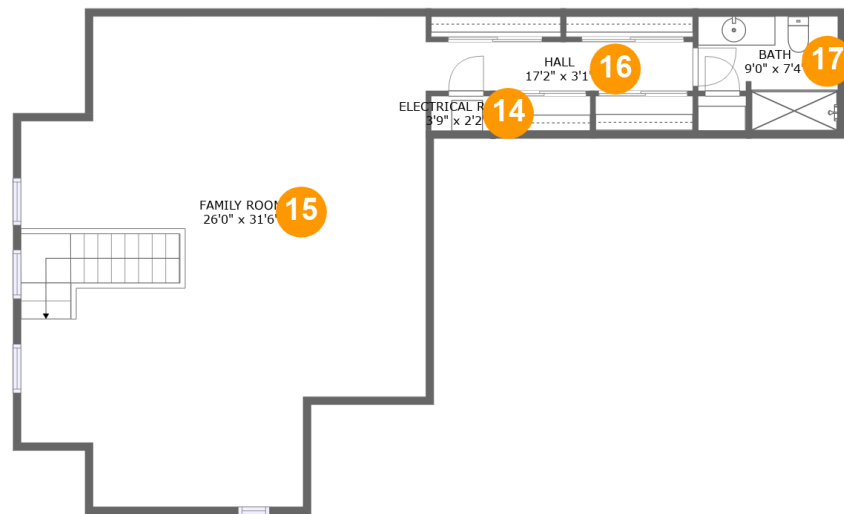
Floor 1

Total sqft: 1999 Living area: 1394

#		Dimensions	sqft	Counted as living area
1	Dining Area	12'11" x 11'11"	152 sq. ft	Yes
2	Garage	20'0" x 17'2"	344 sq. ft	No
3	Utility	8'8" x 7'4"	64 sq. ft	Yes
4	Hall	7'11" x 3'1"	47 sq. ft	Yes
5	W.I.C.	8'5" x 6'2"	52 sq. ft	Yes
6	Bedroom	14'7" x 13'8"	200 sq. ft	Yes
7	Foyer	4'10" x 5'10"	29 sq. ft	Yes
8	Bath	8'5" x 7'1"	50 sq. ft	Yes
9	Office	13'5" x 14'6"	182 sq. ft	Yes
10	Kitchen	19'9" x 13'7"	199 sq. ft	Yes
11	Porch	20'7" x 11'3"	228 sq. ft	No

6354 Jefferson Pointe Cir, Clairton, PA, US

#		Dimensions	sqft	Counted as living area
12	Living Room	13'4" x 17'4"	243 sq. ft	Yes
13	WC	4'10" x 4'9"	23 sq. ft	Yes

6354 Jefferson Pointe Cir, Clairton, PA, US**Room dimensions**

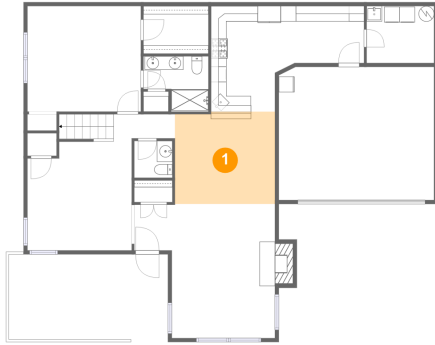
Floor 2

Total sqft: 982 Living area: 883

#		Dimensions	sqft	Counted as living area
14	Electrical Room	3'9" x 2'2"	8 sq. ft	No
15	Family Room	26'0" x 31'6"	645 sq. ft	Yes
16	Hall	17'2" x 3'1"	54 sq. ft	Yes
17	Bath	9'0" x 7'4"	57 sq. ft	Yes

6354 Jefferson Pointe Cir, Clairton, PA, US

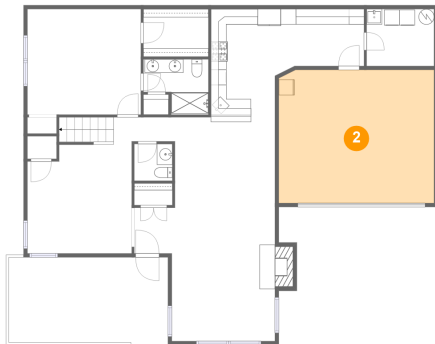
1 Floor 1 - Dining Area



Dimensions: 12'11" x 11'11"
Area: 152 sq. ft
Counted as living area: Yes

Heated: Yes
Finished: Yes
Enclosed: Yes
Contiguous: Yes
Permitted: Yes
Wet space: No
Addition: No
Conversion: No

2 Floor 1 - Garage



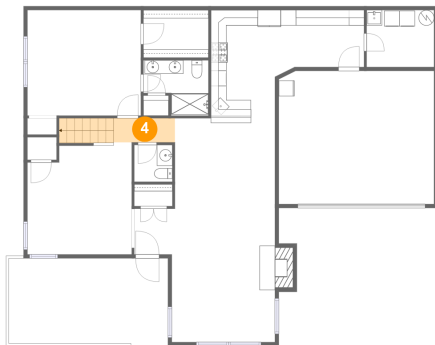
Dimensions: 20'0" x 17'2"
Area: 344 sq. ft
Counted as living area: No

Heated: No
Finished: No
Enclosed: Yes
Contiguous: Yes
Permitted: Yes
Wet space: No
Addition: No
Conversion: No

6354 Jefferson Pointe Cir, Clairton, PA, US**3 Floor 1 - Utility**

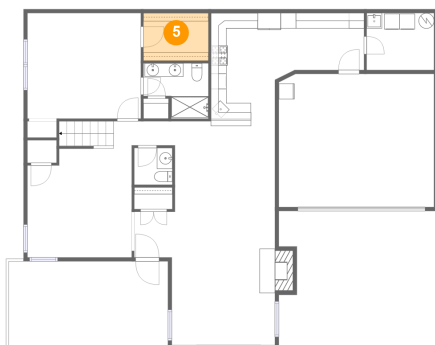
Dimensions: 8'8" x 7'4"
Area: 64 sq. ft
Counted as living area: Yes

Heated: Yes
Finished: Yes
Enclosed: Yes
Contiguous: Yes
Permitted: Yes
Wet space: No
Addition: No
Conversion: No

4 Floor 1 - Hall

Dimensions: 7'11" x 3'1"
Area: 47 sq. ft
Counted as living area: Yes

Heated: Yes
Finished: Yes
Enclosed: Yes
Contiguous: Yes
Permitted: Yes
Wet space: No
Addition: No
Conversion: No

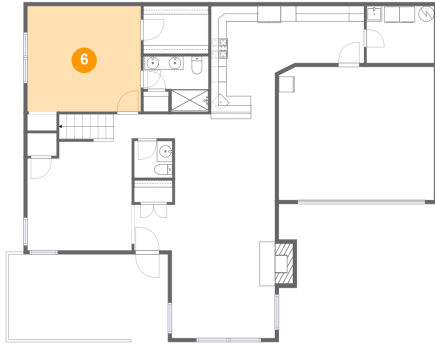
5 Floor 1 - W.I.C.

Dimensions: 8'5" x 6'2"
Area: 52 sq. ft
Counted as living area: Yes

Heated: Yes
Finished: Yes
Enclosed: Yes
Contiguous: Yes
Permitted: Yes
Wet space: No
Addition: No
Conversion: No

6354 Jefferson Pointe Cir, Clairton, PA, US

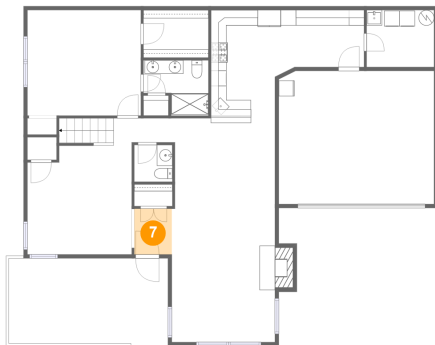
6 Floor 1 - Bedroom



Dimensions: 14'7" x 13'8"
Area: 200 sq. ft
Counted as living area: Yes

Heated: Yes
Finished: Yes
Enclosed: Yes
Contiguous: Yes
Permitted: Yes
Wet space: No
Addition: No
Conversion: No

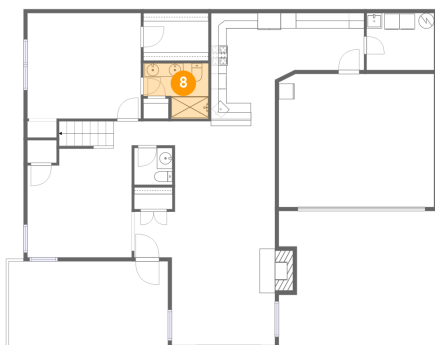
7 Floor 1 - Foyer



Dimensions: 4'10" x 5'10"
Area: 29 sq. ft
Counted as living area: Yes

Heated: Yes
Finished: Yes
Enclosed: Yes
Contiguous: Yes
Permitted: Yes
Wet space: No
Addition: No
Conversion: No

8 Floor 1 - Bath

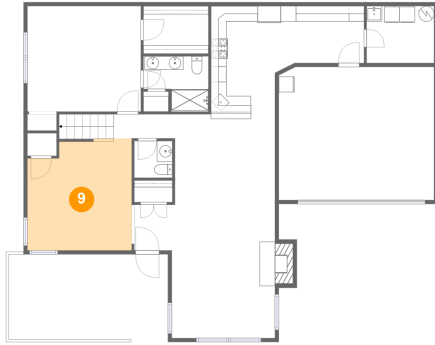


Dimensions: 8'5" x 7'1"
Area: 50 sq. ft
Counted as living area: Yes

Heated: Yes
Finished: Yes
Enclosed: Yes
Contiguous: Yes
Permitted: Yes
Wet space: Yes
Addition: No
Conversion: No

6354 Jefferson Pointe Cir, Clairton, PA, US

9 Floor 1 - Office



Dimensions: 13'5" x 14'6"
Area: 182 sq. ft
Counted as living area: Yes

Heated: Yes
Finished: Yes
Enclosed: Yes
Contiguous: Yes
Permitted: Yes
Wet space: No
Addition: No
Conversion: No

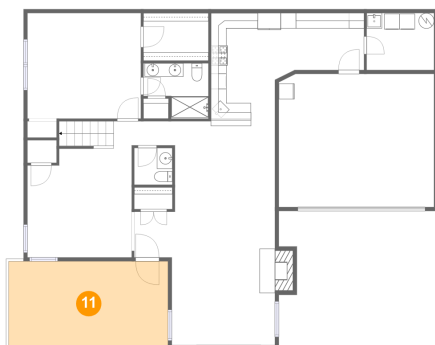
10 Floor 1 - Kitchen



Dimensions: 19'9" x 13'7"
Area: 199 sq. ft
Counted as living area: Yes

Heated: Yes
Finished: Yes
Enclosed: Yes
Contiguous: Yes
Permitted: Yes
Wet space: No
Addition: No
Conversion: No

11 Floor 1 - Porch

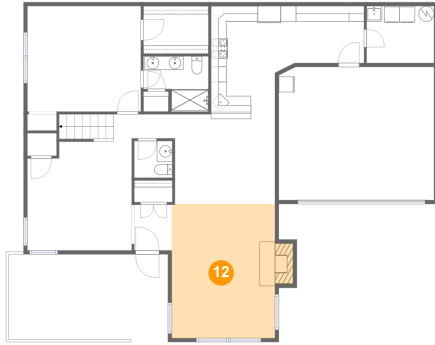


Dimensions: 20'7" x 11'3"
Area: 228 sq. ft
Counted as living area: No

Heated: No
Finished: Yes
Enclosed: No
Contiguous: Yes
Permitted: Yes
Wet space: No
Addition: No
Conversion: No

6354 Jefferson Pointe Cir, Clairton, PA, US

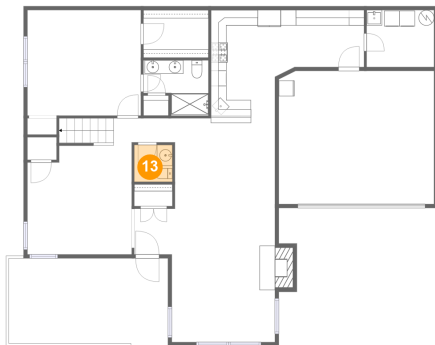
12 Floor 1 - Living Room



Dimensions: 13'4" x 17'4"
Area: 243 sq. ft
Counted as living area: Yes

Heated: Yes
Finished: Yes
Enclosed: Yes
Contiguous: Yes
Permitted: Yes
Wet space: No
Addition: No
Conversion: No

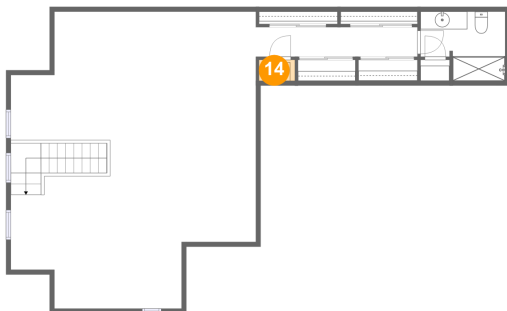
13 Floor 1 - WC



Dimensions: 4'10" x 4'9"
Area: 23 sq. ft
Counted as living area: Yes

Heated: Yes
Finished: Yes
Enclosed: Yes
Contiguous: Yes
Permitted: Yes
Wet space: Yes
Addition: No
Conversion: No

14 Floor 2 - Electrical Room

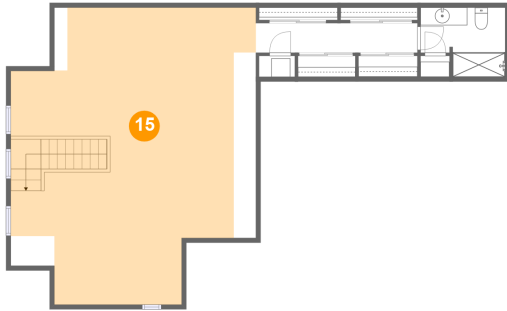


Dimensions: 3'9" x 2'2"
Area: 8 sq. ft
Counted as living area: No

Heated: No
Finished: No
Enclosed: Yes
Contiguous: Yes
Permitted: Yes
Wet space: No
Addition: No
Conversion: No

6354 Jefferson Pointe Cir, Clairton, PA, US

15 Floor 2 - Family Room



Dimensions: 26'0" x 31'6"
Area: 645 sq. ft
Counted as living area: Yes

Heated: Yes
Finished: Yes
Enclosed: Yes
Contiguous: Yes
Permitted: Yes
Wet space: No
Addition: No
Conversion: No

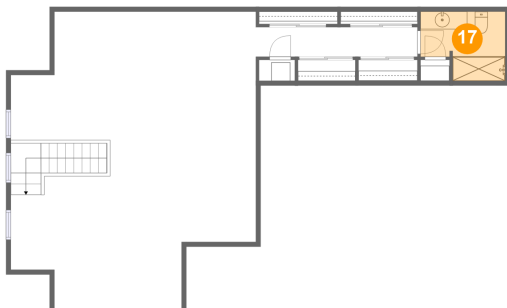
16 Floor 2 - Hall



Dimensions: 17'2" x 3'1"
Area: 54 sq. ft
Counted as living area: Yes

Heated: Yes
Finished: Yes
Enclosed: Yes
Contiguous: Yes
Permitted: Yes
Wet space: No
Addition: No
Conversion: No

17 Floor 2 - Bath



Dimensions: 9'0" x 7'4"
Area: 57 sq. ft
Counted as living area: Yes

Heated: Yes
Finished: Yes
Enclosed: Yes
Contiguous: Yes
Permitted: Yes
Wet space: Yes
Addition: No
Conversion: No