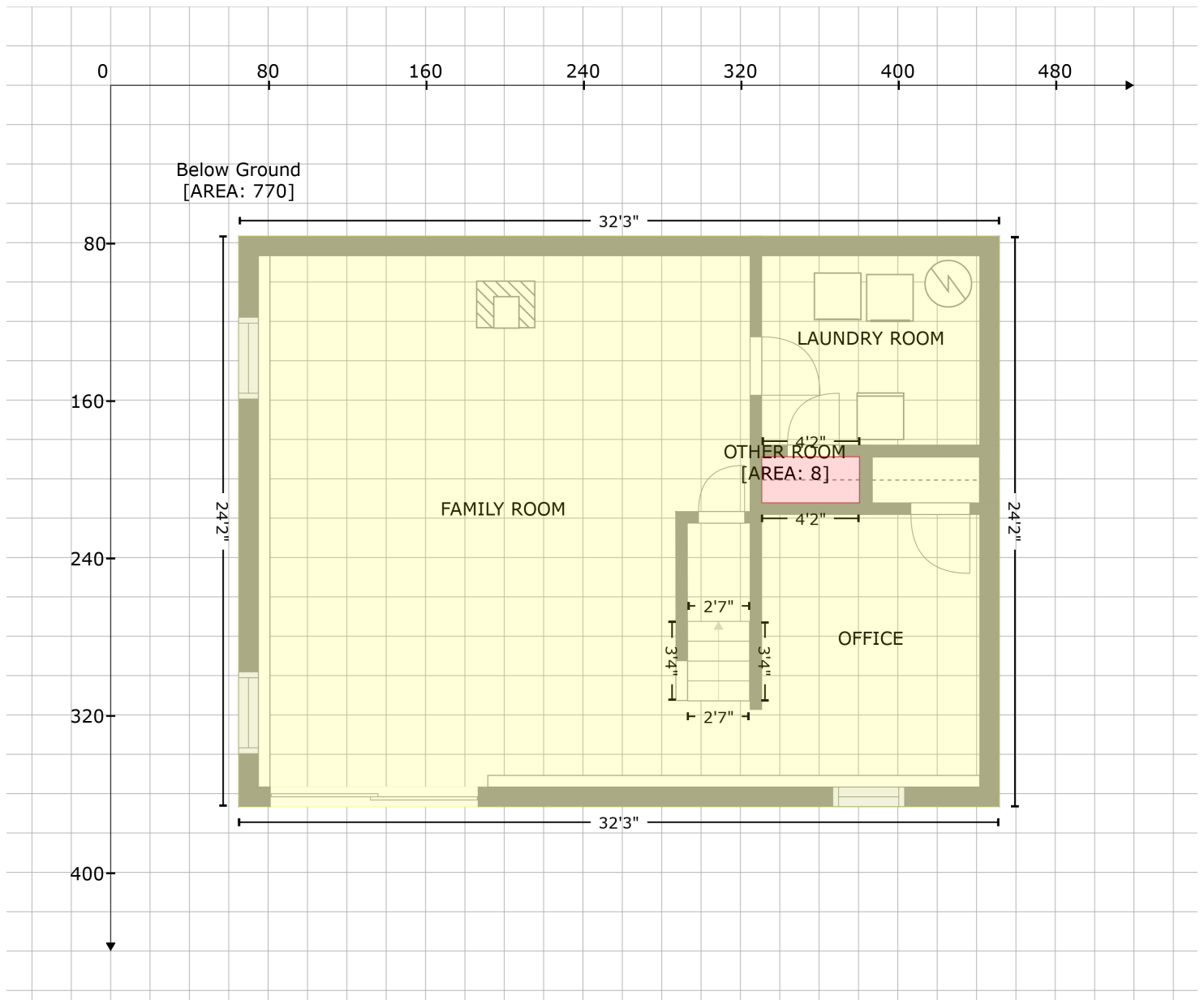


22 Mayfair Ln, Mahopac, NY, United States

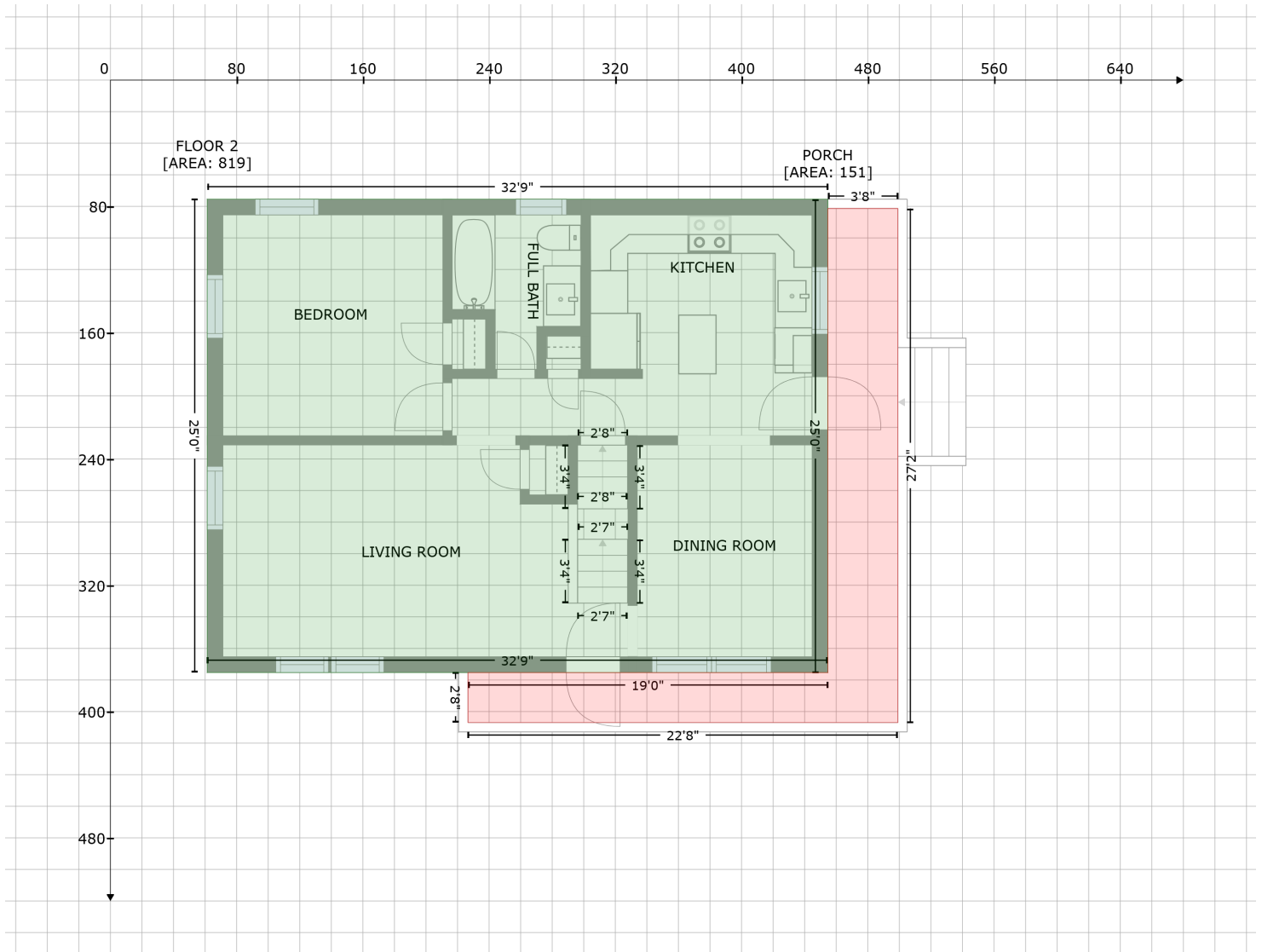
Gross Living Area: 1155 sq. ft



Space	Area (sq. ft)	Calculation <small>Coordinate Polygon Area Algorithm using inches</small>
Below Ground (Living area)	770	$-((451.6 + 451.6) * (76.7 - 366.6) + (451.6 + 65) * (366.6 - 366.6) + (65 + 65) * (366.6 - 76.7) + (65 + 451.6) * (76.7 - 76.7)) * 0.5 * 0.00694 - ((380.6 + 330.8) * (188.7 - 188.7) + (330.8 + 330.8) * (188.7 - 212.2) + (330.8 + 380.6) * (212.2 - 212.2) + (380.6 + 380.6) * (212.2 - 188.7)) * 0.5 * 0.00694$
OTHER ROOM (Non-living area)	8	$-((380.6 + 380.6) * (188.7 - 212.2) + (380.6 + 330.8) * (212.2 - 212.2) + (330.8 + 330.8) * (212.2 - 188.7) + (330.8 + 380.6) * (188.7 - 188.7)) * 0.5 * 0.00694$

22 Mayfair Ln, Mahopac, NY, United States

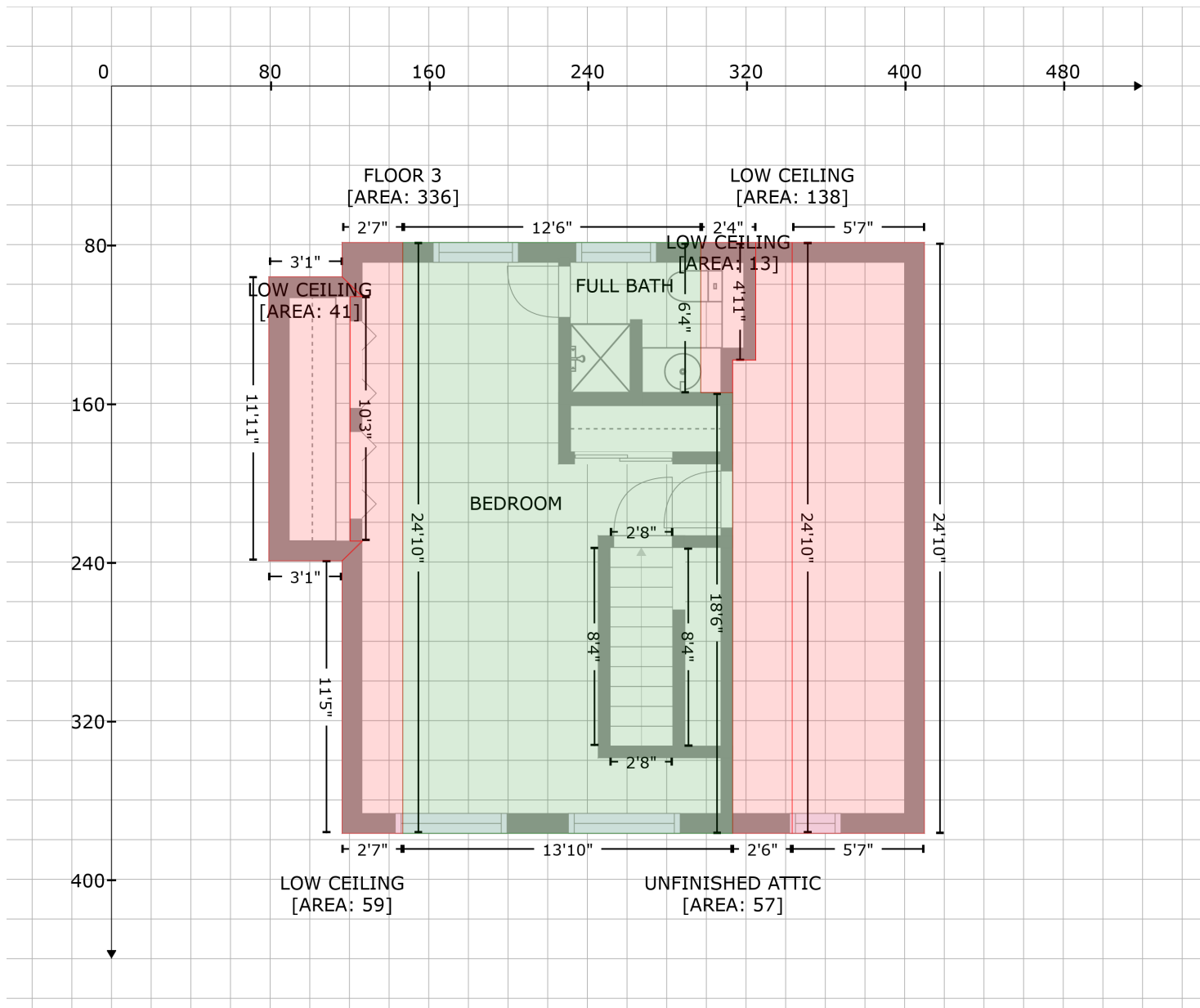
Gross Living Area: 1155 sq. ft



Space	Area (sq. ft)	Calculation <small>Coordinate Polygon Area Algorithm using inches</small>
FLOOR 2 (Living area)	819	$-((454.7 + 454.7) * (75.4 - 375.3) + (454.7 + 61.3) * (375.3 - 375.3) + (61.3 + 61.3) * (375.3 - 75.4) + (61.3 + 454.7) * (75.4 - 75.4)) * 0.5 * 0.00694$
PORCH (Non-living area)	151	$-((499.1 + 499.1) * (81.3 - 407) + (499.1 + 226.6) * (407 - 407) + (226.6 + 226.6) * (407 - 375.3) + (226.6 + 454.7) * (375.3 - 375.3) + (454.7 + 454.7) * (375.3 - 81.3) + (454.7 + 499.1) * (81.3 - 81.3)) * 0.5 * 0.00694$

22 Mayfair Ln, Mahopac, NY, United States

Gross Living Area: 1155 sq. ft



Space	Area (sq. ft)	Calculation <small>Coordinate Polygon Area Algorithm using inches</small>
FLOOR 3 (Living area)	336	$-\left((297.2 + 297.2) * (79 - 154.6) + (297.2 + 313.3) * (154.6 - 154.6) + (313.3 + 313.3) * (154.6 - 376.8) + (313.3 + 146.9) * (376.8 - 376.8) + (146.9 + 146.9) * (376.8 - 79) + (146.9 + 297.2) * (79 - 79)\right) * 0.5 * 0.00694$
LOW CEILING (Non-living area)	59	$-\left((146.9 + 146.9) * (79 - 376.8) + (146.9 + 116.3) * (376.8 - 376.8) + (116.3 + 116.3) * (376.8 - 239.4) + (116.3 + 126.5) * (239.4 - 229.7) + (126.5 + 126.3) * (229.7 - 229.4) + (126.3 + 120.4) * (229.4 - 229.4) + (120.4 + 120.4) * (229.4 - 106.3) + (120.4 + 126.4) * (106.3 - 106.2) + (126.4 + 116.3) * (106.2 - 96.3) + (116.3 + 116.3) * (96.3 - 79) + (116.3 + 146.9) * (79 - 79)\right) * 0.5 * 0.00694$
LOW CEILING (Non-living area)	138	$-\left((410 + 410) * (79 - 376.8) + (410 + 343.3) * (376.8 - 376.8) + (343.3 + 343.3) * (376.8 - 79) + (343.3 + 410) * (79 - 79)\right) * 0.5 * 0.00694$

22 Mayfair Ln, Mahopac, NY, United States

Gross Living Area: 1155 sq. ft

Space	Area (sq. ft)	Calculation <small>Coordinate Polygon Area Algorithm using inches</small>
LOW CEILING (Non-living area)	41	$-\left((116.3 + 126.4) * (96.3 - 106.2) + (126.4 + 120.4) * (106.2 - 106.3) + (120.4 + 120.4) * (106.3 - 229.4) + (120.4 + 126.3) * (229.4 - 229.4) + (126.3 + 116.3) * (229.4 - 239.4) + (116.3 + 79.4) * (239.4 - 239.4) + (79.4 + 79.4) * (239.4 - 96.3) + (79.4 + 116.3) * (96.3 - 96.3)\right) * 0.5 * 0.00694$
LOW CEILING (Non-living area)	13	$-\left((324.9 + 324.9) * (79 - 138.2) + (324.9 + 313.3) * (138.2 - 138.2) + (313.3 + 313.3) * (138.2 - 154.6) + (313.3 + 297.2) * (154.6 - 154.6) + (297.2 + 297.2) * (154.6 - 79) + (297.2 + 324.9) * (79 - 79)\right) * 0.5 * 0.00694$
UNFINISHED ATTIC (Non-living area)	57	$-\left((343.3 + 343.3) * (79 - 376.8) + (343.3 + 313.3) * (376.8 - 376.8) + (313.3 + 313.3) * (376.8 - 138.2) + (313.3 + 324.9) * (138.2 - 138.2) + (324.9 + 324.9) * (138.2 - 79) + (324.9 + 343.3) * (79 - 79)\right) * 0.5 * 0.00694$