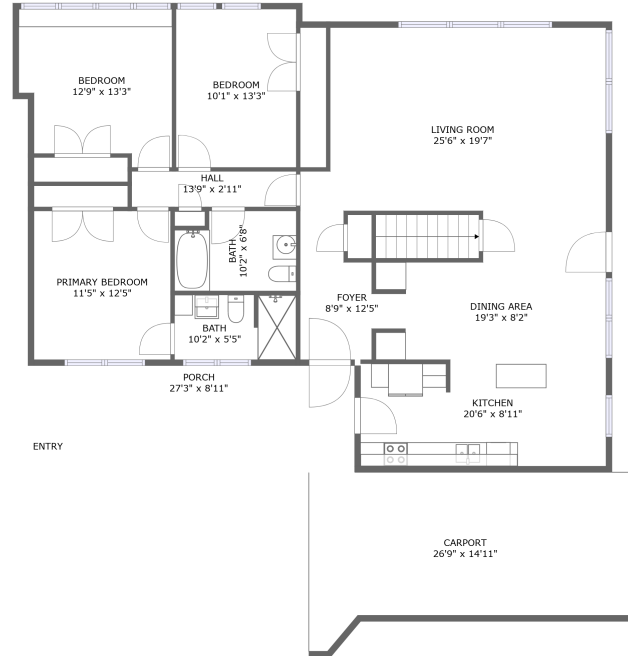
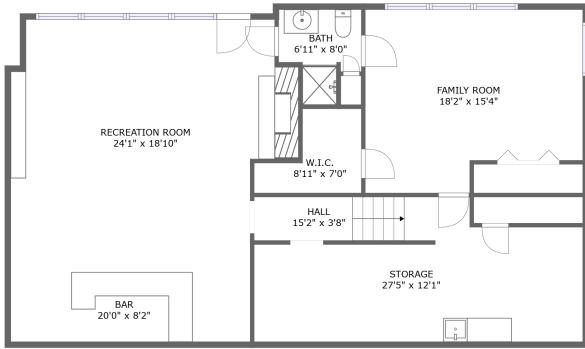


3418 West Ridge Road Southwest, South Roanoke, Roanoke, Roanoke, Virginia, United




Property Summary

 **0** garages

 **3** bedrooms

 **3** bathrooms

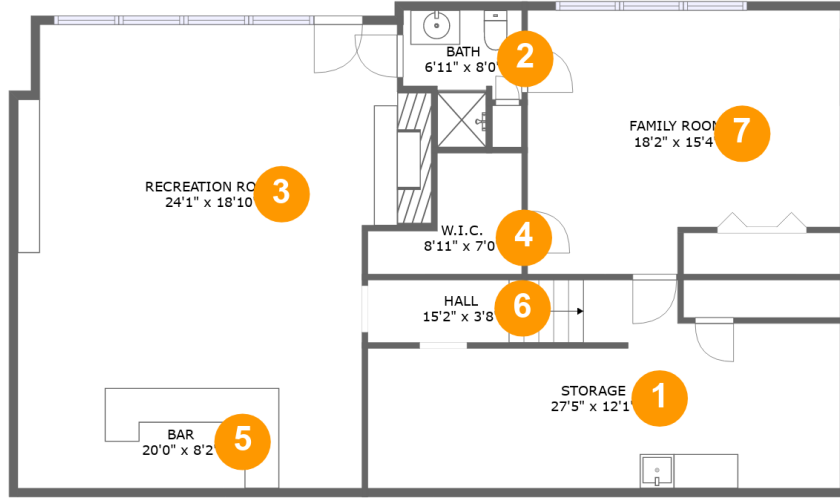
 **0** half baths

 **2** floors

 **2,682** Gross Living Area sqft

 **3,484** total sqft

3418 West Ridge Road Southwest, South Roanoke, Roanoke, Roanoke, Virginia, United



Room Dimensions

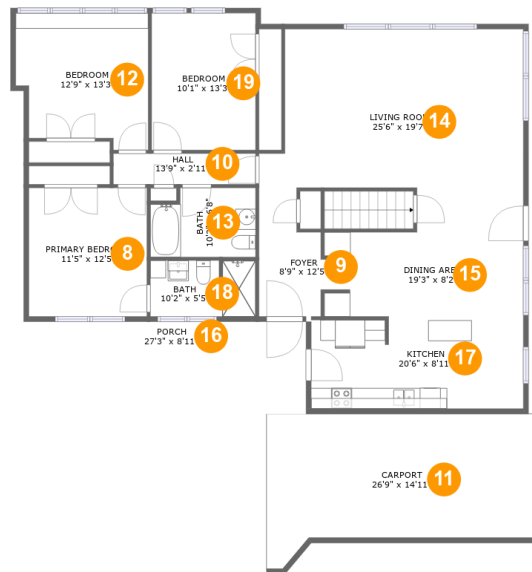
Floor 1

Total sqft: 1379

Living area: 1042

#	Room name	Dimensions	Area (sqft)	Counted as Living Area
1	Storage	27'5" x 12'1"	248 sq. ft	No
2	Bath	6'11" x 8'0"	42 sq. ft	No
3	Recreation Room	24'1" x 18'10"	410 sq. ft	Yes
4	W.i.c.	8'11" x 7'0"	45 sq. ft	Yes
5	Bar	20'0" x 8'2"	163 sq. ft	Yes
6	Hall	15'2" x 3'8"	55 sq. ft	Yes
7	Family Room	18'2" x 15'4"	253 sq. ft	Yes

3418 West Ridge Road Southwest, South Roanoke, Roanoke, Roanoke, Virginia, United



Room Dimensions

Floor 2

Total sqft: 2105

Living area: 1640

#	Room name	Dimensions	Area (sqft)	Counted as Living Area
8	Primary Bedroom	11'5" x 12'5"	142 sq. ft	Yes
9	Foyer	8'9" x 12'5"	72 sq. ft	Yes
10	Hall	13'9" x 2'11"	41 sq. ft	Yes
11	Carport	26'9" x 14'11"	329 sq. ft	No
12	Bedroom	12'9" x 13'3"	152 sq. ft	Yes
13	Bath	10'2" x 6'8"	63 sq. ft	Yes
14	Living Room	25'6" x 19'7"	405 sq. ft	Yes
15	Dining Area	19'3" x 8'2"	148 sq. ft	Yes
16	Porch	27'3" x 8'11"	122 sq. ft	No
17	Kitchen	20'6" x 8'11"	179 sq. ft	Yes
18	Bath	10'2" x 5'5"	54 sq. ft	Yes

Scan captured on Thu, 11 Jul 2024 21:12:36 GMT

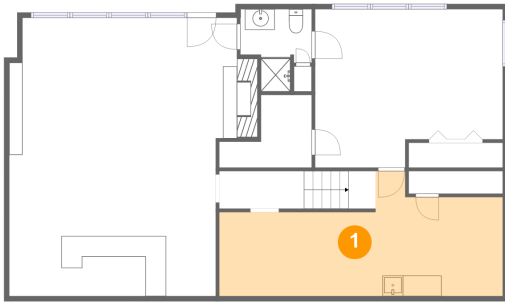
Information is calculated by CubiCasa technology; deemed highly reliable but not guaranteed.

3418 West Ridge Road Southwest, South Roanoke, Roanoke, Roanoke, Virginia, United

#	Room name	Dimensions	Area (sqft)	Counted as Living Area
19	Bedroom	10'1" x 13'3"	133 sq. ft	Yes

3418 West Ridge Road Southwest, South Roanoke, Roanoke, Roanoke, Virginia, United

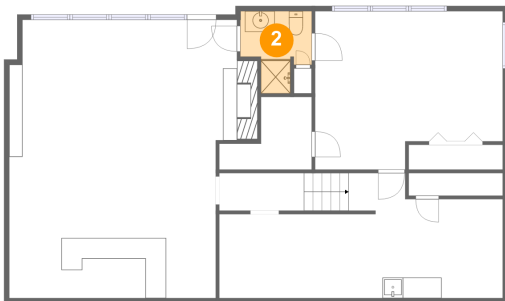
1 Floor 1 - Storage



Dimensions: 27'5" x 12'1"
Area: 248 sq. ft
Counted as Living Area: No

Heated: No
Finished: No
Enclosed: No
Contiguous: Yes
Permitted: Yes
Wet Space: No
Addition: No
Conversion: No

2 Floor 1 - Bath

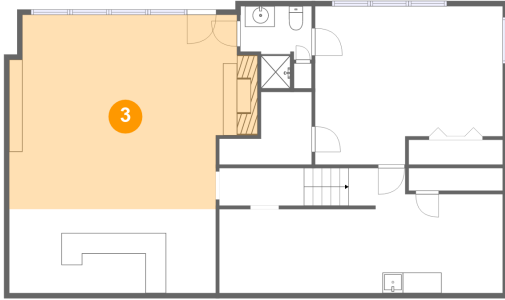


Dimensions: 6'11" x 8'0"
Area: 42 sq. ft
Counted as Living Area: No

Heated: Yes
Finished: Yes
Enclosed: Yes
Contiguous: Yes
Permitted: Yes
Wet Space: Yes
Addition: No
Conversion: No

3418 West Ridge Road Southwest, South Roanoke, Roanoke, Roanoke, Virginia, United

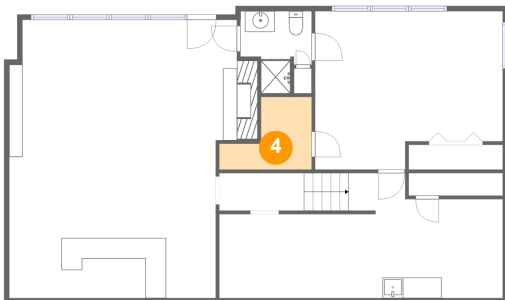
3 Floor 1 - Recreation Room



Dimensions: 24'1" x 18'10"
Area: 410 sq. ft
Counted as Living Area:
Yes

Heated: Yes
Finished: Yes
Enclosed: Yes
Contiguous:
Yes
Permitted: Yes
Wet Space: No
Addition: No
Conversion: No

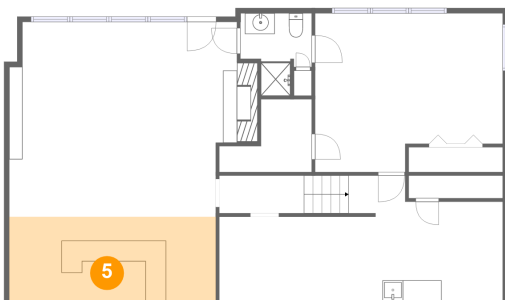
4 Floor 1 - W.i.c.



Dimensions: 8'11" x 7'0"
Area: 45 sq. ft
Counted as Living Area:
Yes

Heated: Yes
Finished: Yes
Enclosed: Yes
Contiguous:
Yes
Permitted: Yes
Wet Space: No
Addition: No
Conversion: No

5 Floor 1 - Bar

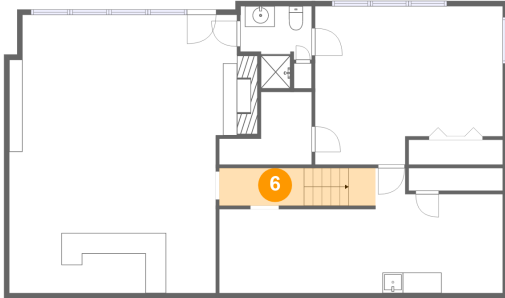


Dimensions: 20'0" x 8'2"
Area: 163 sq. ft
Counted as Living Area:
Yes

Heated: Yes
Finished: Yes
Enclosed: Yes
Contiguous:
Yes
Permitted: Yes
Wet Space: No
Addition: No
Conversion: No

3418 West Ridge Road Southwest, South Roanoke, Roanoke, Roanoke, Virginia, United

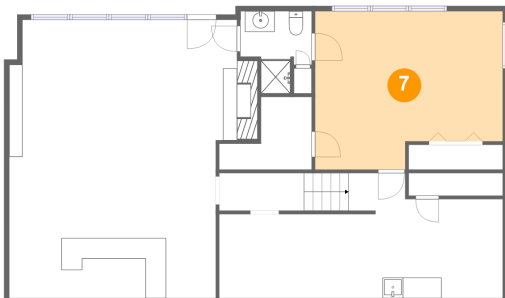
6 Floor 1 - Hall



Dimensions: 15'2" x 3'8"
Area: 55 sq. ft
Counted as Living Area:
Yes

Heated: Yes
Finished: Yes
Enclosed: Yes
Contiguous:
Yes
Permitted: Yes
Wet Space: No
Addition: No
Conversion: No

7 Floor 1 - Family Room



Dimensions: 18'2" x 15'4"
Area: 253 sq. ft
Counted as Living Area:
Yes

Heated: Yes
Finished: Yes
Enclosed: Yes
Contiguous:
Yes
Permitted: Yes
Wet Space: No
Addition: No
Conversion: No

8 Floor 2 - Primary Bedroom

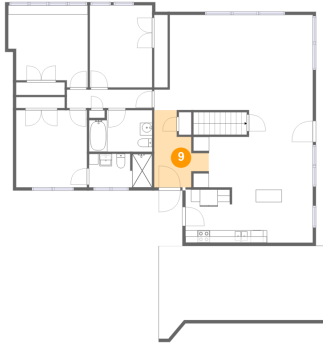


Dimensions: 11'5" x 12'5"
Area: 142 sq. ft
Counted as Living Area:
Yes

Heated: Yes
Finished: Yes
Enclosed: Yes
Contiguous:
Yes
Permitted: Yes
Wet Space: No
Addition: No
Conversion: No

3418 West Ridge Road Southwest, South Roanoke, Roanoke, Roanoke, Virginia, United

9 Floor 2 - Foyer



Dimensions: 8'9" x 12'5"
Area: 72 sq. ft
Counted as Living Area:
Yes

Heated: Yes
Finished: Yes
Enclosed: Yes
Contiguous:
Yes
Permitted: Yes
Wet Space: No
Addition: No
Conversion: No

10 Floor 2 - Hall



Dimensions: 13'9" x 2'11"
Area: 41 sq. ft
Counted as Living Area:
Yes

Heated: Yes
Finished: Yes
Enclosed: Yes
Contiguous:
Yes
Permitted: Yes
Wet Space: No
Addition: No
Conversion: No

11 Floor 2 - Carport

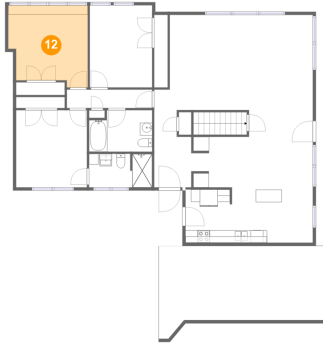


Dimensions: 26'9" x 14'11"
Area: 329 sq. ft
Counted as Living Area: No

Heated: No
Finished: Yes
Enclosed: No
Contiguous: Yes
Permitted: Yes
Wet Space: No
Addition: No
Conversion: No

3418 West Ridge Road Southwest, South Roanoke, Roanoke, Roanoke, Virginia, United

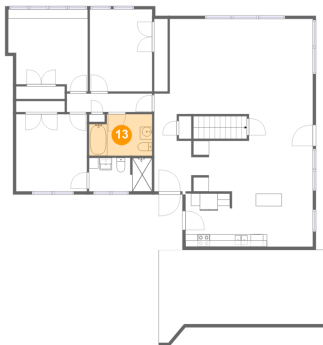
12 Floor 2 - Bedroom



Dimensions: 12'9" x 13'3"
Area: 152 sq. ft
Counted as Living Area:
Yes

Heated: Yes
Finished: Yes
Enclosed: Yes
Contiguous:
Yes
Permitted: Yes
Wet Space: No
Addition: No
Conversion: No

13 Floor 2 - Bath



Dimensions: 10'2" x 6'8"
Area: 63 sq. ft
Counted as Living Area:
Yes

Heated: Yes
Finished: Yes
Enclosed: Yes
Contiguous:
Yes
Permitted: Yes
Wet Space: Yes
Addition: No
Conversion: No

14 Floor 2 - Living Room

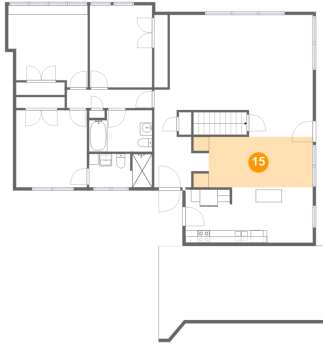


Dimensions: 25'6" x 19'7"
Area: 405 sq. ft
Counted as Living Area:
Yes

Heated: Yes
Finished: Yes
Enclosed: Yes
Contiguous:
Yes
Permitted: Yes
Wet Space: No
Addition: No
Conversion: No

3418 West Ridge Road Southwest, South Roanoke, Roanoke, Roanoke, Virginia, United

15 Floor 2 - Dining Area



Dimensions: 19'3" x 8'2"
Area: 148 sq. ft
Counted as Living Area:
Yes

Heated: Yes
Finished: Yes
Enclosed: Yes
Contiguous:
Yes
Permitted: Yes
Wet Space: No
Addition: No
Conversion: No

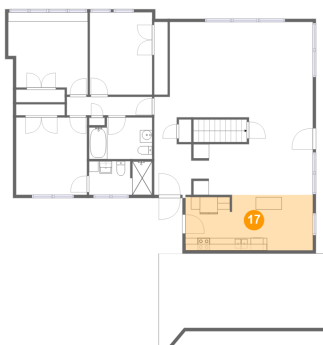
16 Floor 2 - Porch



Dimensions: 27'3" x 8'11"
Area: 122 sq. ft
Counted as Living Area: No

Heated: No
Finished: Yes
Enclosed: No
Contiguous: Yes
Permitted: Yes
Wet Space: No
Addition: No
Conversion: No

17 Floor 2 - Kitchen

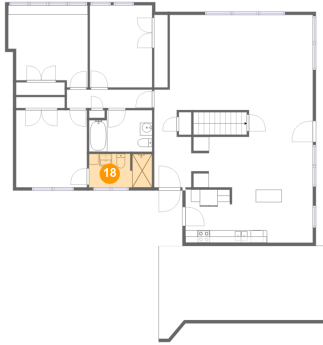


Dimensions: 20'6" x 8'11"
Area: 179 sq. ft
Counted as Living Area:
Yes

Heated: Yes
Finished: Yes
Enclosed: Yes
Contiguous:
Yes
Permitted: Yes
Wet Space: No
Addition: No
Conversion: No

3418 West Ridge Road Southwest, South Roanoke, Roanoke, Roanoke, Virginia, United

18 Floor 2 - Bath



Dimensions: 10'2" x 5'5"
Area: 54 sq. ft
Counted as Living Area:
Yes

Heated: Yes
Finished: Yes
Enclosed: Yes
Contiguous:
Yes
Permitted: Yes
Wet Space: Yes
Addition: No
Conversion: No

19 Floor 2 - Bedroom



Dimensions: 10'1" x 13'3"
Area: 133 sq. ft
Counted as Living Area:
Yes

Heated: Yes
Finished: Yes
Enclosed: Yes
Contiguous:
Yes
Permitted: Yes
Wet Space: No
Addition: No
Conversion: No