

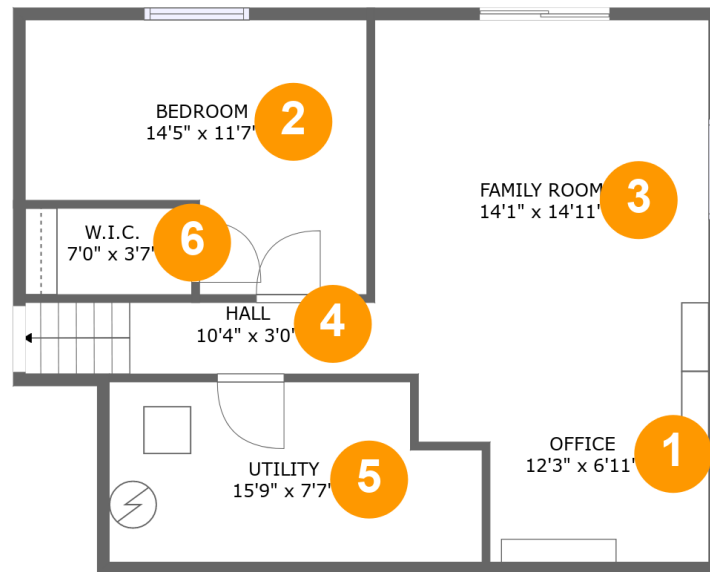
9321 W 90th Dr, Westminster, CO, US



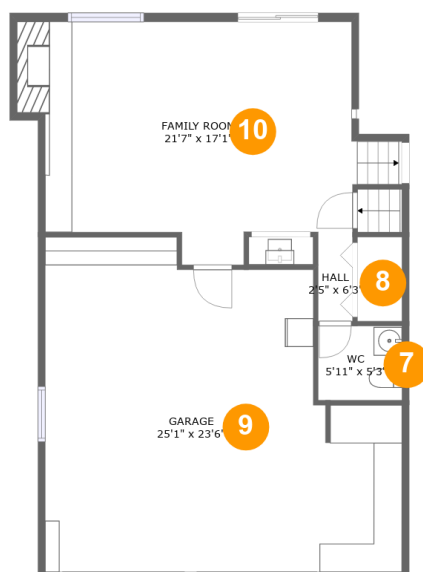
Property Summary

1 garages **4** bedrooms **2** bathrooms **1** half baths

4 floors **2,696** Gross Living Area sqft **3,375** total sqft

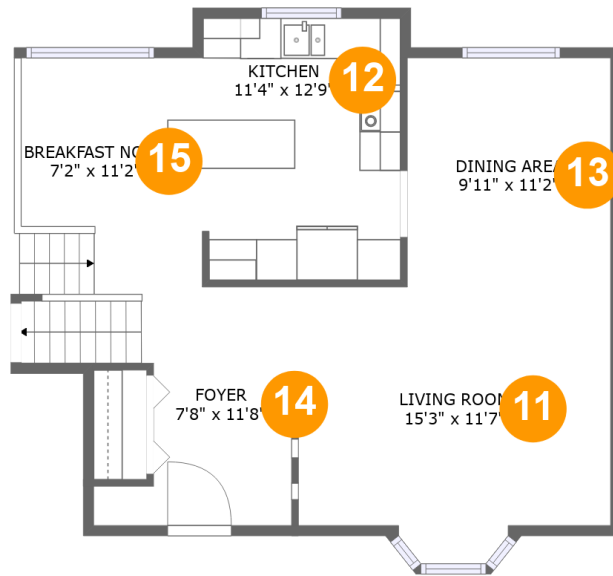
9321 W 90th Dr, Westminster, CO, US**Room Dimensions****Floor 1****Total sqft: 682****Living area: 560**

#	Room name	Dimensions	Area (sqft)	Counted as Living Area
1	Office	12'3" x 6'11"	82 sq. ft	Yes
2	Bedroom	14'5" x 11'7"	137 sq. ft	Yes
3	Family Room	14'1" x 14'11"	210 sq. ft	Yes
4	Hall	10'4" x 3'0"	44 sq. ft	Yes
5	Utility	15'9" x 7'7"	111 sq. ft	No
6	W.i.c.	7'0" x 3'7"	26 sq. ft	Yes

9321 W 90th Dr,Westminster,CO,US**Room Dimensions****Floor 2****Total sqft: 1022****Living area: 475**

#	Room name	Dimensions	Area (sqft)	Counted as Living Area
7	Wc	5'11" x 5'3"	31 sq. ft	Yes
8	Hall	2'5" x 6'3"	15 sq. ft	Yes
9	Garage	25'1" x 23'6"	494 sq. ft	No
10	Family Room	21'7" x 17'1"	352 sq. ft	Yes

9321 W 90th Dr,Westminster,CO,US



Room Dimensions

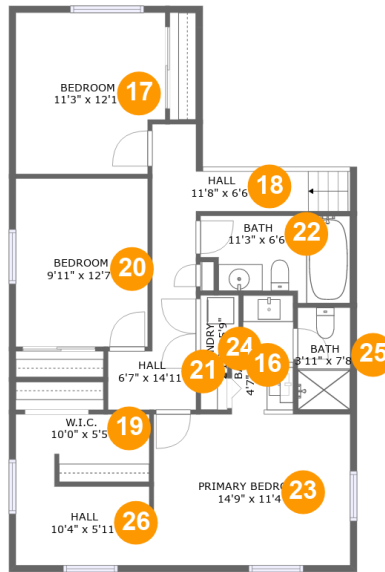
Floor 3

Total sqft: 707

Living area: 697

#	Room name	Dimensions	Area (sqft)	Counted as Living Area
11	Living Room	15'3" x 11'7"	178 sq. ft	Yes
12	Kitchen	11'4" x 12'9"	142 sq. ft	Yes
13	Dining Area	9'11" x 11'2"	111 sq. ft	Yes
14	Foyer	7'8" x 11'8"	111 sq. ft	Yes
15	Breakfast Nook	7'2" x 11'2"	80 sq. ft	Yes

9321 W 90th Dr, Westminster, CO, US



Room Dimensions

Floor 4

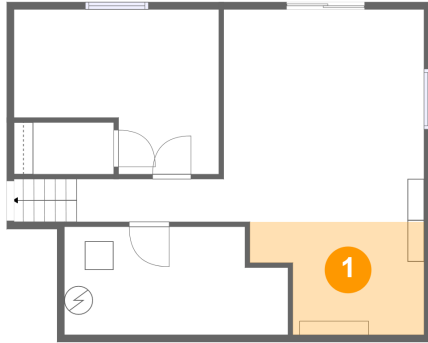
Total sqft: 964

Living area: 964

#	Room name	Dimensions	Area (sqft)	Counted as Living Area
16	Bath	4'7" x 8'11"	39 sq. ft	Yes
17	Bedroom	11'3" x 12'1"	130 sq. ft	Yes
18	Hall	11'8" x 6'6"	56 sq. ft	Yes
19	W.i.c.	10'0" x 5'5"	51 sq. ft	Yes
20	Bedroom	9'11" x 12'7"	125 sq. ft	Yes
21	Hall	6'7" x 14'11"	64 sq. ft	Yes
22	Bath	11'3" x 6'6"	63 sq. ft	Yes
23	Primary Bedroom	14'9" x 11'4"	167 sq. ft	Yes
24	Laundry	2'10" x 5'9"	14 sq. ft	Yes
25	Bath	3'11" x 7'8"	30 sq. ft	Yes
26	Hall	10'4" x 5'11"	61 sq. ft	Yes

9321 W 90th Dr, Westminster, CO, US

1 Floor 1 - Office



Dimensions: 12'3" x 6'11"
Area: 82 sq. ft
Counted as Living Area:
Yes

Heated: Yes
Finished: Yes
Enclosed: Yes
Contiguous:
Yes
Permitted: Yes
Wet Space: No
Addition: No
Conversion: No

2 Floor 1 - Bedroom



Dimensions: 14'5" x 11'7"
Area: 137 sq. ft
Counted as Living Area:
Yes

Heated: Yes
Finished: Yes
Enclosed: Yes
Contiguous:
Yes
Permitted: Yes
Wet Space: No
Addition: No
Conversion: No

9321 W 90th Dr, Westminster, CO, US

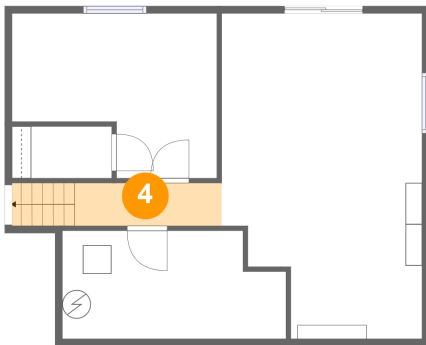
3 Floor 1 - Family Room



Dimensions: 14'1" x 14'11"
Area: 210 sq. ft
Counted as Living Area:
Yes

Heated: Yes
Finished: Yes
Enclosed: Yes
Contiguous:
Yes
Permitted: Yes
Wet Space: No
Addition: No
Conversion: No

4 Floor 1 - Hall



Dimensions: 10'4" x 3'0"
Area: 44 sq. ft
Counted as Living Area:
Yes

Heated: Yes
Finished: Yes
Enclosed: Yes
Contiguous:
Yes
Permitted: Yes
Wet Space: No
Addition: No
Conversion: No

5 Floor 1 - Utility



Dimensions: 15'9" x 7'7"
Area: 111 sq. ft
Counted as Living Area: No

Heated: Yes
Finished: No
Enclosed: Yes
Contiguous: Yes
Permitted: Yes
Wet Space: No
Addition: No
Conversion: No

9321 W 90th Dr, Westminster, CO, US

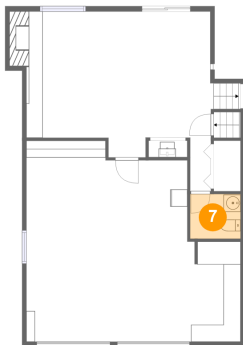
6 Floor 1 - W.i.c.



Dimensions: 7'0" x 3'7"
Area: 26 sq. ft
Counted as Living Area:
Yes

Heated: Yes
Finished: Yes
Enclosed: Yes
Contiguous:
Yes
Permitted: Yes
Wet Space: No
Addition: No
Conversion: No

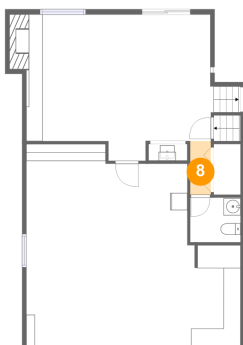
7 Floor 2 - Wc



Dimensions: 5'11" x 5'3"
Area: 31 sq. ft
Counted as Living Area:
Yes

Heated: Yes
Finished: Yes
Enclosed: Yes
Contiguous:
Yes
Permitted: Yes
Wet Space: Yes
Addition: No
Conversion: No

8 Floor 2 - Hall

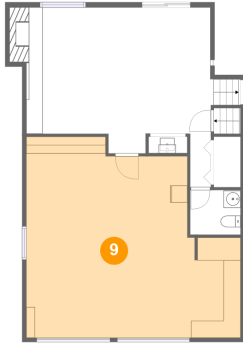


Dimensions: 2'5" x 6'3"
Area: 15 sq. ft
Counted as Living Area:
Yes

Heated: Yes
Finished: Yes
Enclosed: Yes
Contiguous:
Yes
Permitted: Yes
Wet Space: No
Addition: No
Conversion: No

9321 W 90th Dr, Westminster, CO, US

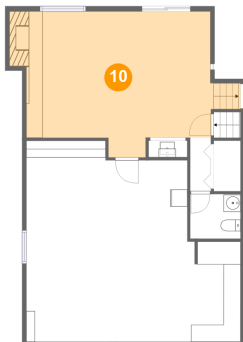
9 Floor 2 - Garage



Dimensions: 25'1" x 23'6"
Area: 494 sq. ft
Counted as Living Area: No

Heated: No
Finished: No
Enclosed: Yes
Contiguous: Yes
Permitted: Yes
Wet Space: No
Addition: No
Conversion: No

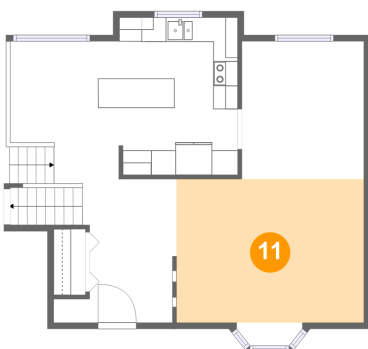
10 Floor 2 - Family Room



Dimensions: 21'7" x 17'1"
Area: 352 sq. ft
Counted as Living Area: Yes

Heated: Yes
Finished: Yes
Enclosed: Yes
Contiguous: Yes
Permitted: Yes
Wet Space: No
Addition: No
Conversion: No

11 Floor 3 - Living Room

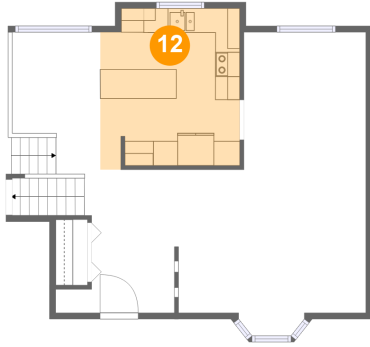


Dimensions: 15'3" x 11'7"
Area: 178 sq. ft
Counted as Living Area: Yes

Heated: Yes
Finished: Yes
Enclosed: Yes
Contiguous: Yes
Permitted: Yes
Wet Space: No
Addition: No
Conversion: No

9321 W 90th Dr, Westminster, CO, US

12 Floor 3 - Kitchen



Dimensions: 11'4" x 12'9"
Area: 142 sq. ft
Counted as Living Area:
Yes

Heated: Yes
Finished: Yes
Enclosed: Yes
Contiguous:
Yes
Permitted: Yes
Wet Space: No
Addition: No
Conversion: No

13 Floor 3 - Dining Area



Dimensions: 9'11" x 11'2"
Area: 111 sq. ft
Counted as Living Area:
Yes

Heated: Yes
Finished: Yes
Enclosed: Yes
Contiguous:
Yes
Permitted: Yes
Wet Space: No
Addition: No
Conversion: No

14 Floor 3 - Foyer

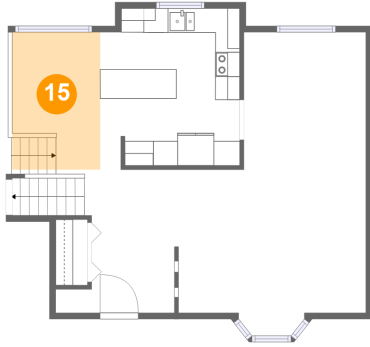


Dimensions: 7'8" x 11'8"
Area: 111 sq. ft
Counted as Living Area:
Yes

Heated: Yes
Finished: Yes
Enclosed: Yes
Contiguous:
Yes
Permitted: Yes
Wet Space: No
Addition: No
Conversion: No

9321 W 90th Dr, Westminster, CO, US

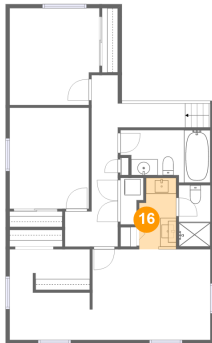
15 Floor 3 - Breakfast Nook



Dimensions: 7'2" x 11'2"
Area: 80 sq. ft
Counted as Living Area:
Yes

Heated: Yes
Finished: Yes
Enclosed: Yes
Contiguous:
Yes
Permitted: Yes
Wet Space: No
Addition: No
Conversion: No

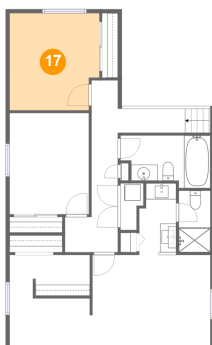
16 Floor 4 - Bath



Dimensions: 4'7" x 8'11"
Area: 39 sq. ft
Counted as Living Area:
Yes

Heated: Yes
Finished: Yes
Enclosed: Yes
Contiguous:
Yes
Permitted: Yes
Wet Space: Yes
Addition: No
Conversion: No

17 Floor 4 - Bedroom

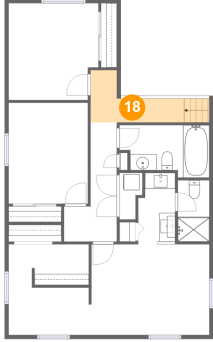


Dimensions: 11'3" x 12'1"
Area: 130 sq. ft
Counted as Living Area:
Yes

Heated: Yes
Finished: Yes
Enclosed: Yes
Contiguous:
Yes
Permitted: Yes
Wet Space: No
Addition: No
Conversion: No

9321 W 90th Dr, Westminster, CO, US

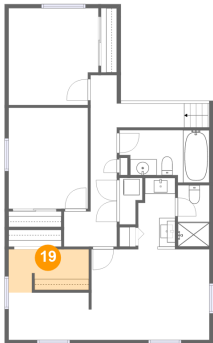
18 Floor 4 - Hall



Dimensions: 11'8" x 6'6"
Area: 56 sq. ft
Counted as Living Area:
Yes

Heated: Yes
Finished: Yes
Enclosed: Yes
Contiguous:
Yes
Permitted: Yes
Wet Space: No
Addition: No
Conversion: No

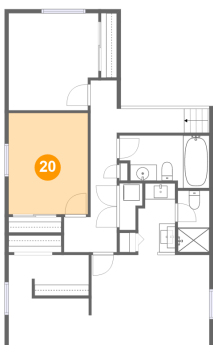
19 Floor 4 - W.i.c.



Dimensions: 10'0" x 5'5"
Area: 51 sq. ft
Counted as Living Area:
Yes

Heated: Yes
Finished: Yes
Enclosed: Yes
Contiguous:
Yes
Permitted: Yes
Wet Space: No
Addition: No
Conversion: No

20 Floor 4 - Bedroom

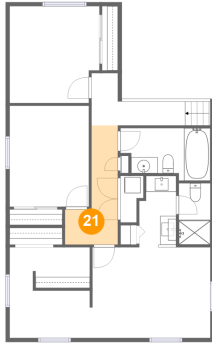


Dimensions: 9'11" x 12'7"
Area: 125 sq. ft
Counted as Living Area:
Yes

Heated: Yes
Finished: Yes
Enclosed: Yes
Contiguous:
Yes
Permitted: Yes
Wet Space: No
Addition: No
Conversion: No

9321 W 90th Dr, Westminster, CO, US

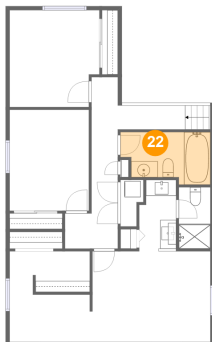
21 Floor 4 - Hall



Dimensions: 6'7" x 14'11"
Area: 64 sq. ft
Counted as Living Area:
Yes

Heated: Yes
Finished: Yes
Enclosed: Yes
Contiguous:
Yes
Permitted: Yes
Wet Space: No
Addition: No
Conversion: No

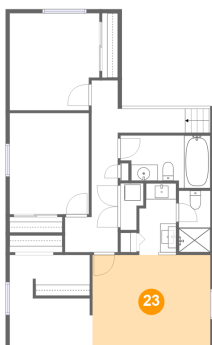
22 Floor 4 - Bath



Dimensions: 11'3" x 6'6"
Area: 63 sq. ft
Counted as Living Area:
Yes

Heated: Yes
Finished: Yes
Enclosed: Yes
Contiguous:
Yes
Permitted: Yes
Wet Space: Yes
Addition: No
Conversion: No

23 Floor 4 - Primary Bedroom

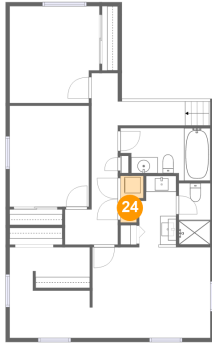


Dimensions: 14'9" x 11'4"
Area: 167 sq. ft
Counted as Living Area:
Yes

Heated: Yes
Finished: Yes
Enclosed: Yes
Contiguous:
Yes
Permitted: Yes
Wet Space: No
Addition: No
Conversion: No

9321 W 90th Dr, Westminster, CO, US

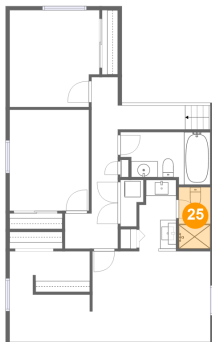
24 Floor 4 - Laundry



Dimensions: 2'10" x 5'9"
Area: 14 sq. ft
Counted as Living Area:
Yes

Heated: Yes
Finished: Yes
Enclosed: Yes
Contiguous:
Yes
Permitted: Yes
Wet Space: No
Addition: No
Conversion: No

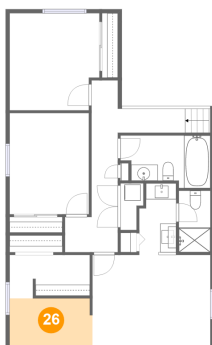
25 Floor 4 - Bath



Dimensions: 3'11" x 7'8"
Area: 30 sq. ft
Counted as Living Area:
Yes

Heated: Yes
Finished: Yes
Enclosed: Yes
Contiguous:
Yes
Permitted: Yes
Wet Space: Yes
Addition: No
Conversion: No

26 Floor 4 - Hall



Dimensions: 10'4" x 5'11"
Area: 61 sq. ft
Counted as Living Area:
Yes

Heated: Yes
Finished: Yes
Enclosed: Yes
Contiguous:
Yes
Permitted: Yes
Wet Space: No
Addition: No
Conversion: No