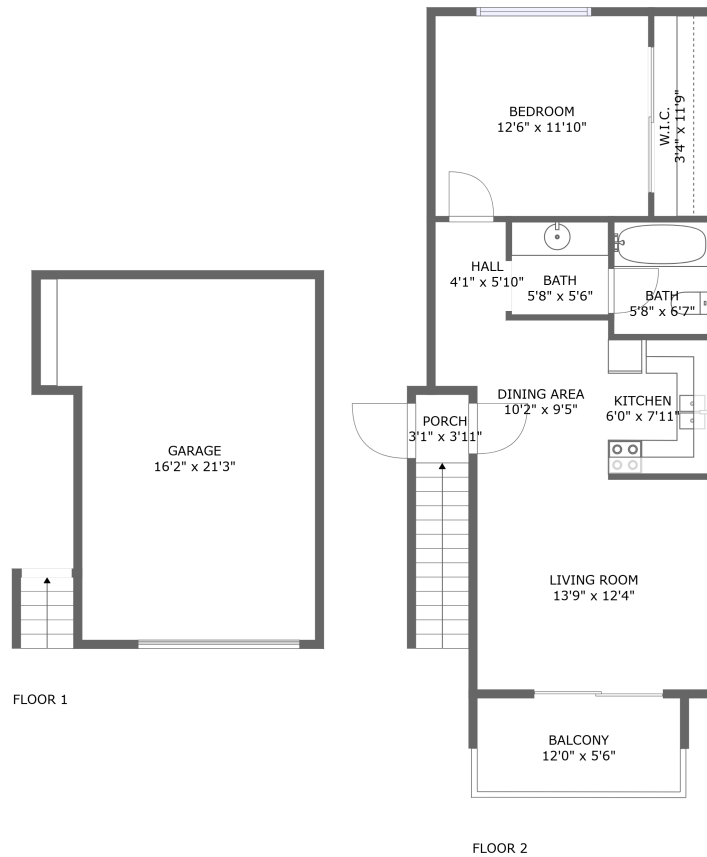


**2611 Solano Road, Pismo Beach, California 93449,
United States, 104**



Property summary

 **1** Garages

 **1** Bedrooms

 **1** Bathrooms

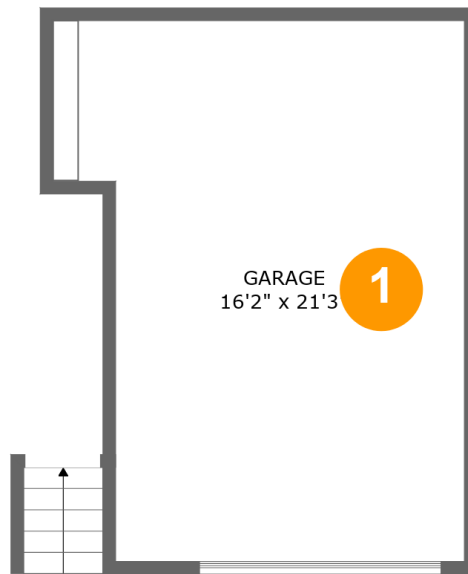
 **0** Half baths

 **2** Floors

 **601** Gross living area sqft

 **1,022** Total sqft

**2611 Solano Road, Pismo Beach, California 93449,
United States, 104**



Room dimensions

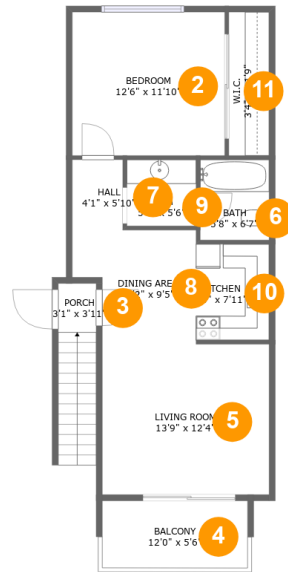
Floor 1

Total sqft: 308

Living area: 0

#		Dimensions	sqft	Counted as living area
1	Garage	16'2" x 21'3"	308 sq. ft	No

2611 Solano Road, Pismo Beach, California 93449,
United States, 104



Room dimensions

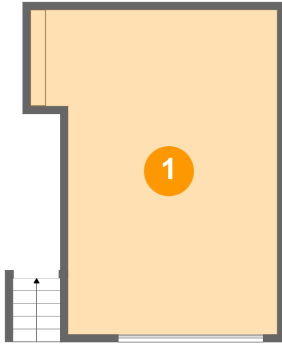
Floor 2

Total sqft: 714 Living area: 601

#		Dimensions	sqft	Counted as living area
2	Bedroom	12'6" x 11'10"	148 sq. ft	Yes
3	Porch	3'1" x 3'11"	47 sq. ft	No
4	Balcony	12'0" x 5'6"	66 sq. ft	No
5	Living Room	13'9" x 12'4"	170 sq. ft	Yes
6	Bath	5'8" x 6'7"	38 sq. ft	Yes
7	Hall	4'1" x 5'10"	24 sq. ft	Yes
8	Dining Area	10'2" x 9'5"	82 sq. ft	Yes
9	Bath	5'8" x 5'6"	31 sq. ft	Yes
10	Kitchen	6'0" x 7'11"	48 sq. ft	Yes
11	W.I.C.	3'4" x 11'9"	39 sq. ft	Yes

2611 Solano Road, Pismo Beach, California 93449,
United States, 104

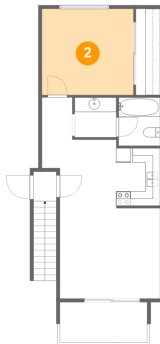
1 Floor 1 - Garage



Dimensions: 16'2" x 21'3"
Area: 308 sq. ft
Counted as living area: No

Heated: No
Finished: No
Enclosed: Yes
Contiguous: Yes
Permitted: Yes
Wet space: No
Addition: No
Conversion: No

2 Floor 2 - Bedroom

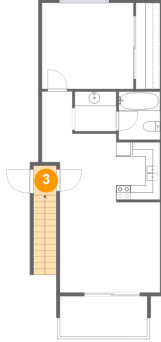


Dimensions: 12'6" x 11'10"
Area: 148 sq. ft
Counted as living area: Yes

Heated: Yes
Finished: Yes
Enclosed: Yes
Contiguous: Yes
Permitted: Yes
Wet space: No
Addition: No
Conversion: No

2611 Solano Road, Pismo Beach, California 93449,
United States, 104

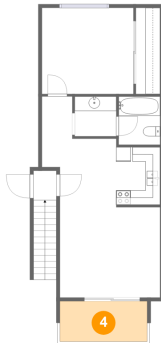
3 Floor 2 - Porch



Dimensions: 3'1" x 3'11"
Area: 47 sq. ft
Counted as living area: No

Heated: No
Finished: Yes
Enclosed: No
Contiguous: Yes
Permitted: Yes
Wet space: No
Addition: No
Conversion: No

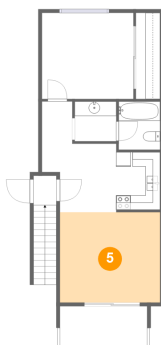
4 Floor 2 - Balcony



Dimensions: 12'0" x 5'6"
Area: 66 sq. ft
Counted as living area: No

Heated: No
Finished: Yes
Enclosed: No
Contiguous: Yes
Permitted: Yes
Wet space: No
Addition: No
Conversion: No

5 Floor 2 - Living Room

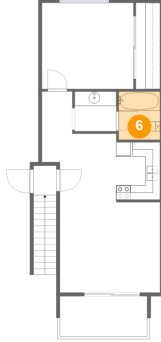


Dimensions: 13'9" x 12'4"
Area: 170 sq. ft
Counted as living area: Yes

Heated: Yes
Finished: Yes
Enclosed: Yes
Contiguous: Yes
Permitted: Yes
Wet space: No
Addition: No
Conversion: No

2611 Solano Road, Pismo Beach, California 93449,
United States, 104

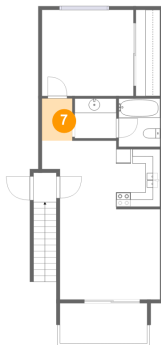
6 Floor 2 - Bath



Dimensions: 5'8" x 6'7"
Area: 38 sq. ft
Counted as living area: Yes

Heated: Yes
Finished: Yes
Enclosed: Yes
Contiguous: Yes
Permitted: Yes
Wet space: Yes
Addition: No
Conversion: No

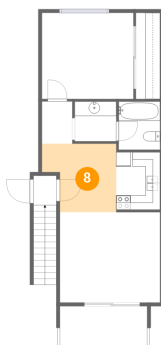
7 Floor 2 - Hall



Dimensions: 4'1" x 5'10"
Area: 24 sq. ft
Counted as living area: Yes

Heated: Yes
Finished: Yes
Enclosed: Yes
Contiguous: Yes
Permitted: Yes
Wet space: No
Addition: No
Conversion: No

8 Floor 2 - Dining Area

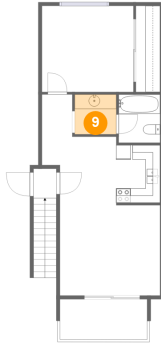


Dimensions: 10'2" x 9'5"
Area: 82 sq. ft
Counted as living area: Yes

Heated: Yes
Finished: Yes
Enclosed: Yes
Contiguous: Yes
Permitted: Yes
Wet space: No
Addition: No
Conversion: No

2611 Solano Road, Pismo Beach, California 93449,
United States, 104

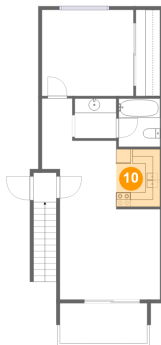
9 Floor 2 - Bath



Dimensions: 5'8" x 5'6"
Area: 31 sq. ft
Counted as living area: Yes

Heated: Yes
Finished: Yes
Enclosed: Yes
Contiguous: Yes
Permitted: Yes
Wet space: Yes
Addition: No
Conversion: No

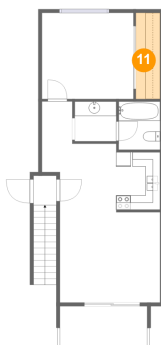
10 Floor 2 - Kitchen



Dimensions: 6'0" x 7'11"
Area: 48 sq. ft
Counted as living area: Yes

Heated: Yes
Finished: Yes
Enclosed: Yes
Contiguous: Yes
Permitted: Yes
Wet space: No
Addition: No
Conversion: No

11 Floor 2 - W.I.C.



Dimensions: 3'4" x 11'9"
Area: 39 sq. ft
Counted as living area: Yes

Heated: Yes
Finished: Yes
Enclosed: Yes
Contiguous: Yes
Permitted: Yes
Wet space: No
Addition: No
Conversion: No