

# 908-3331 No. 3 RD

Richmond BC V6X 2B6

Total Area 928 SQ.FT.

Ceiling Height: 8'7"

2



BEDROOMS

2

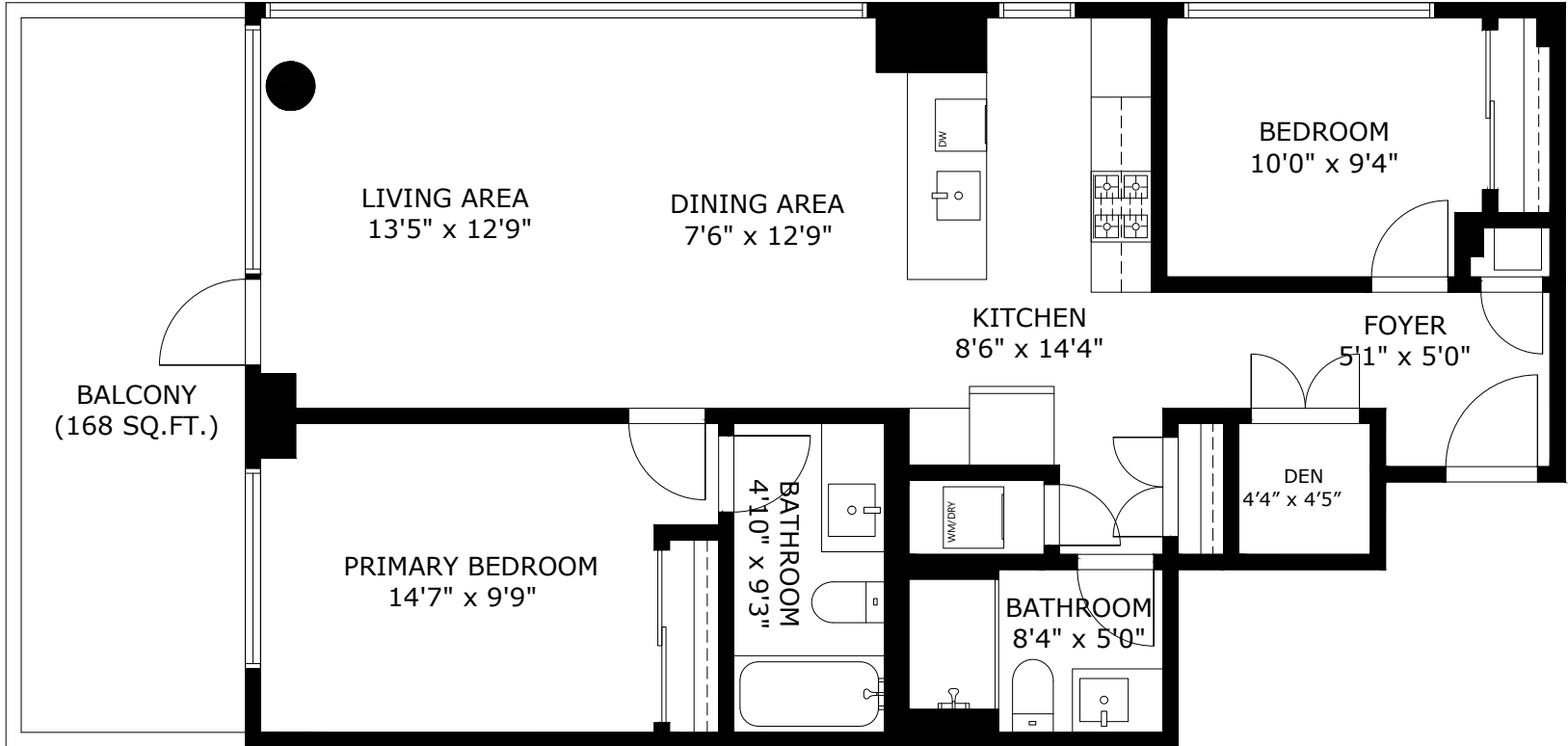


BATHROOMS

928



TOTAL SQ.FT.



908-3331 NO. 3 RD RICHMOND BC V6X 2B6

Measurements are approximate and may not be to scale. Gross measurements provided by agent.  
The floor plan illustration is not suitable for construction/architectural purposes.  
This communication is not intended to cause or induce breach of an existing agency agreement

  
**3D IMMERSIVE**  
Tours Photos Floor Plans

Professionally measured by 3D Immersive Marketing Ltd.

Lead Floor Planner: *Sara Alexander*  
Quality Assurance: *Dianne Graham*