

LIVING ROOM  
19'5" x 16'6"

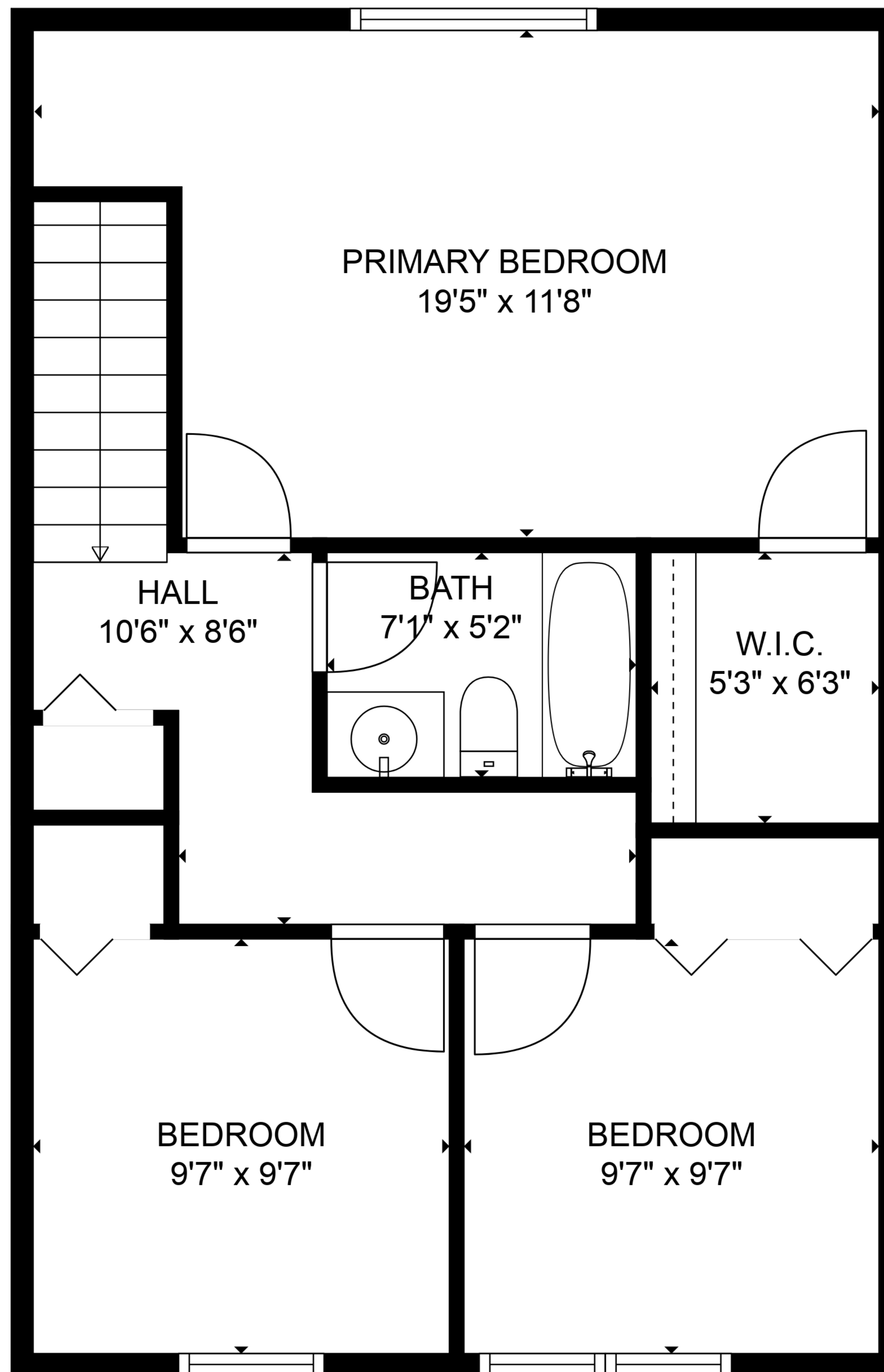
BATH  
5'1" x 5'10"

EAT-IN KITCHEN  
12'8" x 12'2"

FOYER  
4'2" x 12'6"

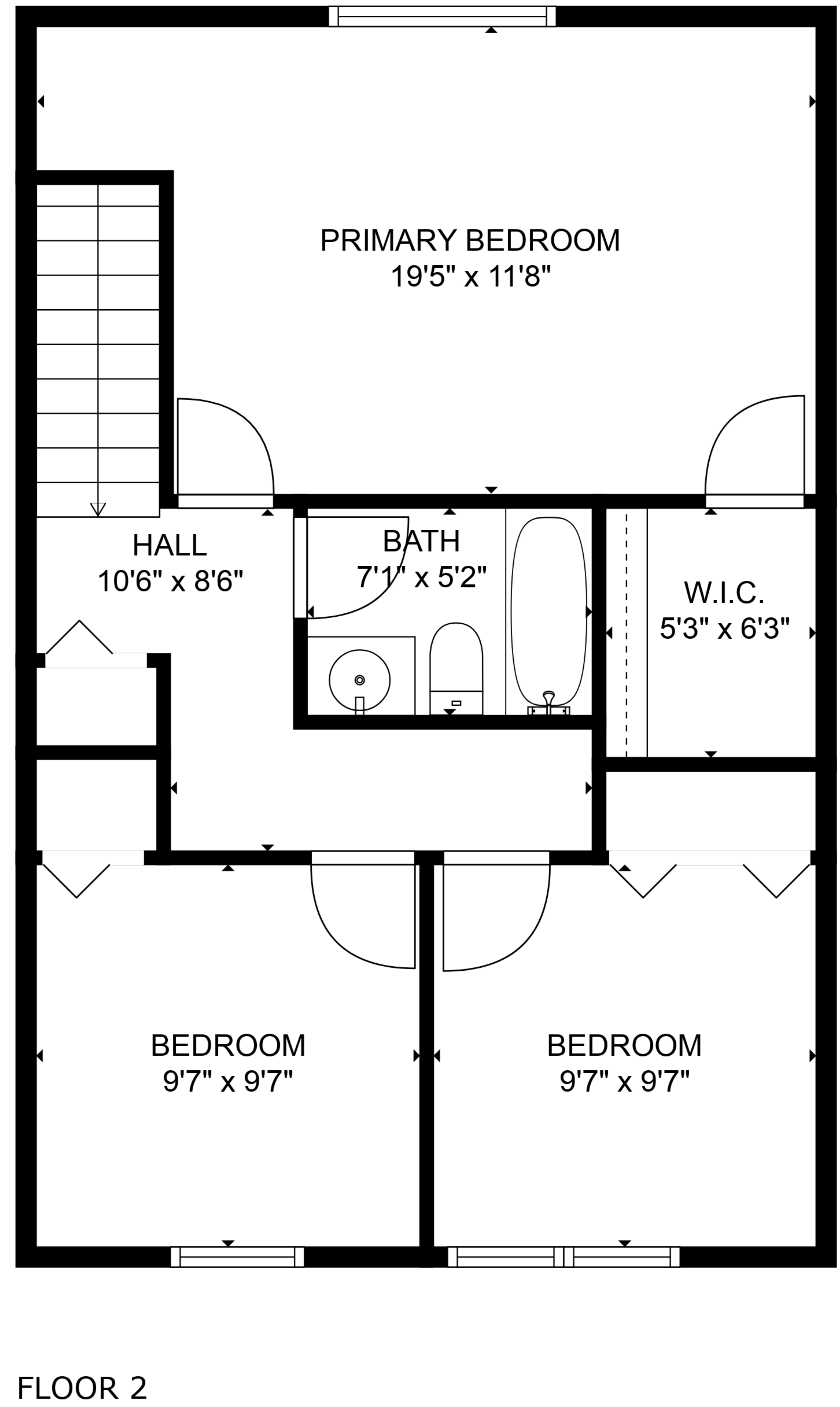
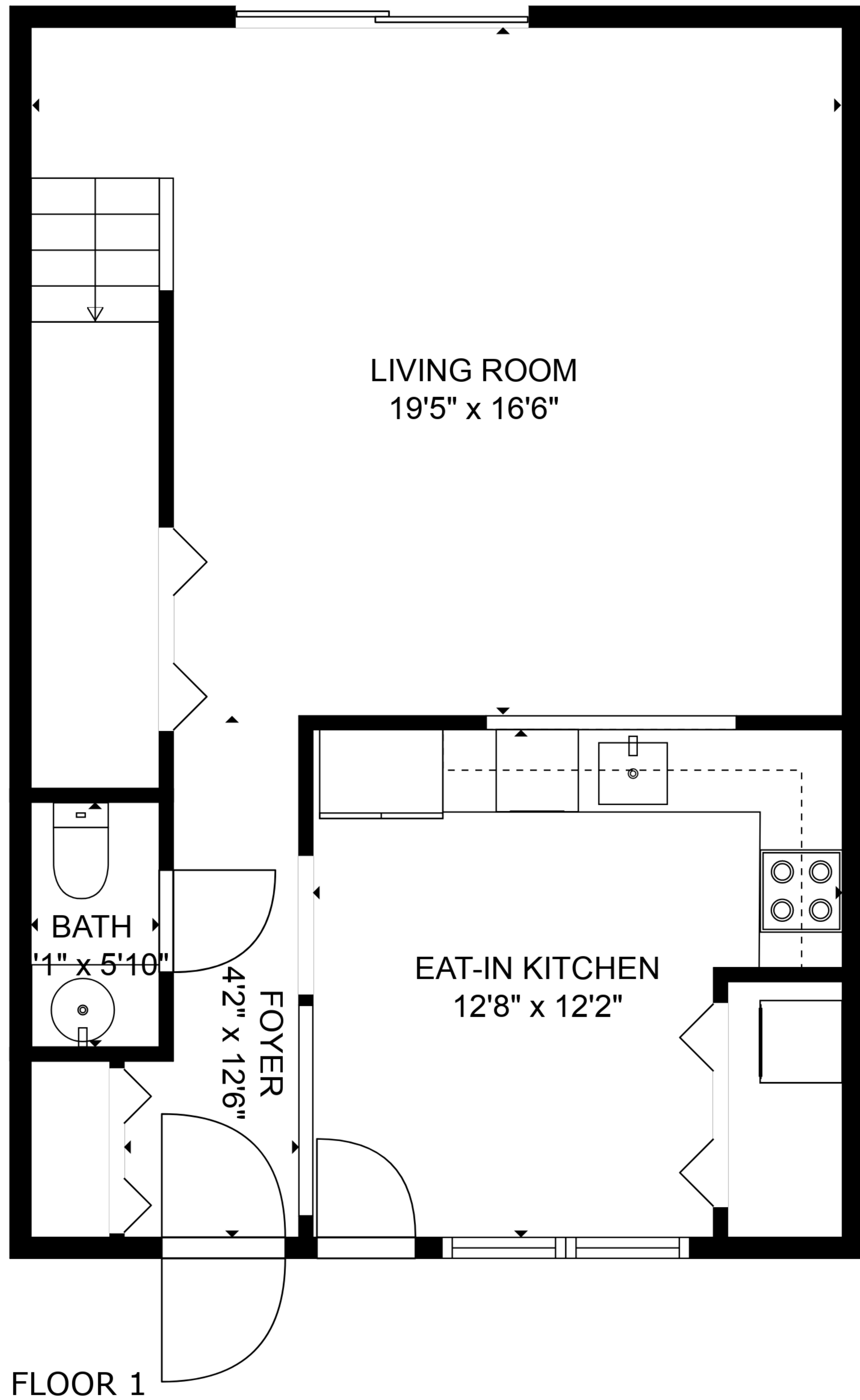
**TOTAL: 1158 sq. ft**

FLOOR 1: 565 sq. ft, FLOOR 2: 593 sq. ft



**TOTAL: 1158 sq. ft**

FLOOR 1: 565 sq. ft, FLOOR 2: 593 sq. ft



**TOTAL: 1158 sq. ft**  
 FLOOR 1: 565 sq. ft, FLOOR 2: 593 sq. ft