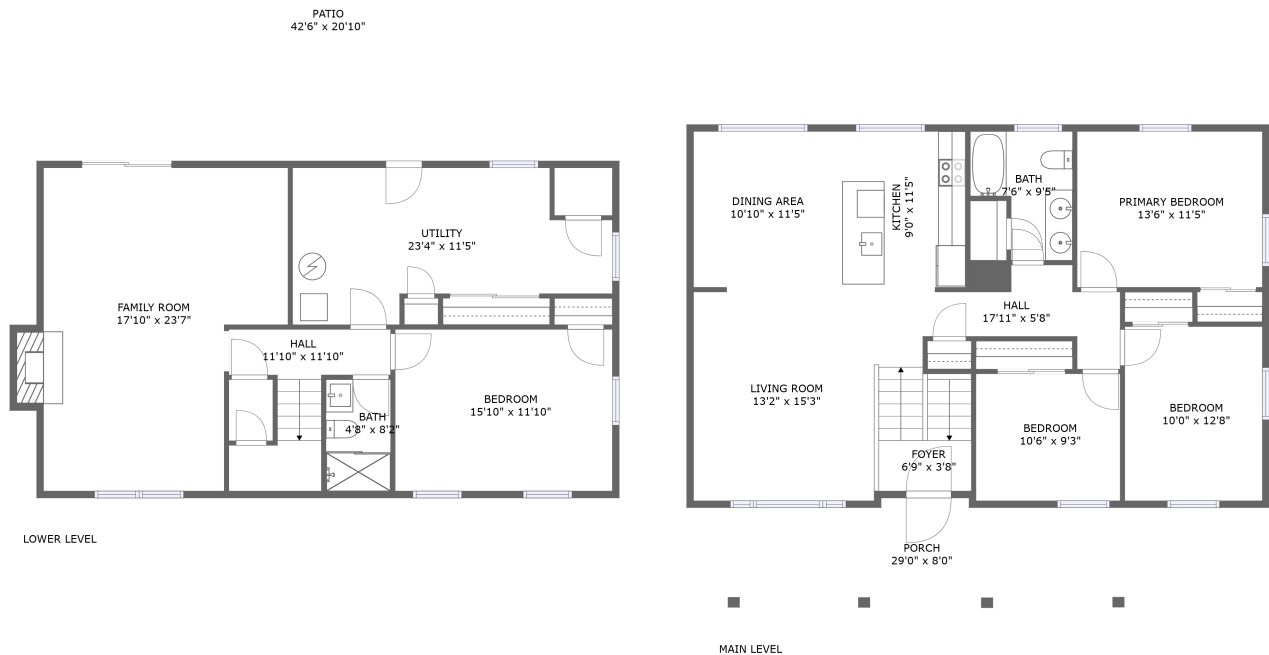


Home report

849 Finney Drive, Montgomery Village, Vinton, Roanoke County,
Virginia, United States, 24179



Total Area: 1840 sq. ft

Floor 1: 726 sq. ft, Floor 2: 1114 sq. ft

Excluded: Utility 227 sq. ft, Undefined 30 sq. ft, Patio 889 sq. ft, Fireplace 12 sq. ft, Porch 216 sq. ft, Walls: 132 sq. ft

Property summary

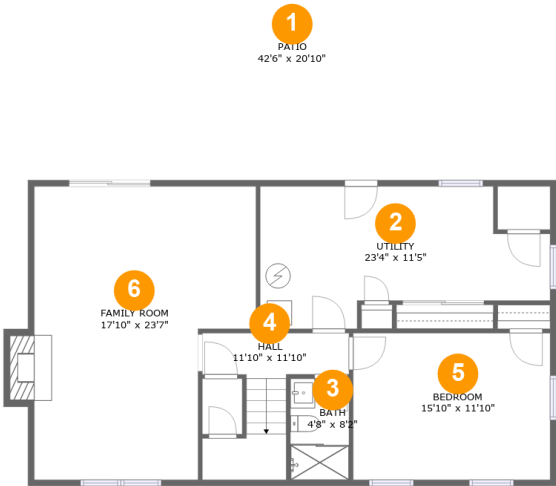
 **2** Floors

 **4** Bedrooms

 **2** Bathrooms

Home report

849 Finney Drive, Montgomery Village, Vinton, Roanoke County, Virginia, United States, 24179



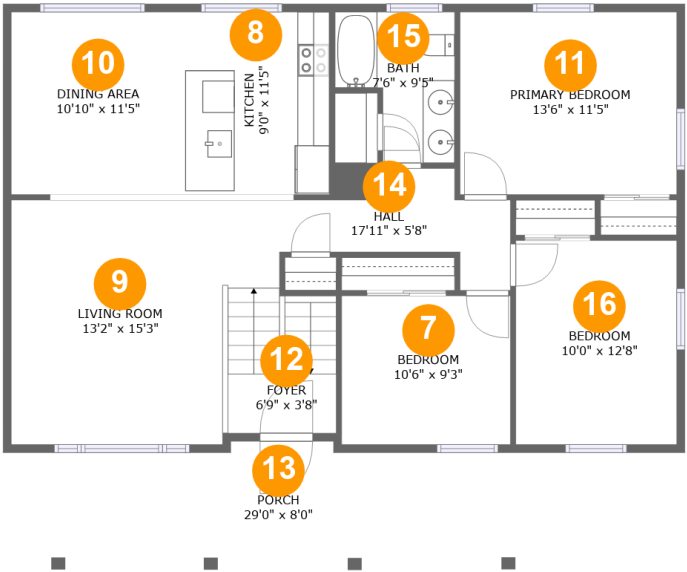
Room dimensions

Floor 1 Total:726sqft Excluded: 1158sqft

#		Max Dimensions	sqft	Included
1	Patio	42'6" x 20'10"	889 sq. ft	No
2	Utility	23'4" x 11'5"	215 sq. ft	No
3	Bath	4'8" x 8'2"	38 sq. ft	Yes
4	Hall	11'10" x 11'10"	78 sq. ft	Yes
5	Bedroom	15'10" x 11'10"	187 sq. ft	Yes
6	Family Room	17'10" x 23'7"	375 sq. ft	Yes

Home report

849 Finney Drive, Montgomery Village, Vinton, Roanoke County,
Virginia, United States, 24179



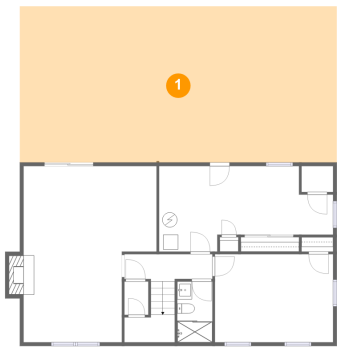
Room dimensions

Floor 2 Total:1114sqft Excluded: 216sqft

#		Max Dimensions	sqft	Included
7	Bedroom	10'6" x 9'3"	98 sq. ft	Yes
8	Kitchen	9'0" x 11'5"	102 sq. ft	Yes
9	Living Room	13'2" x 15'3"	201 sq. ft	Yes
10	Dining Area	10'10" x 11'5"	124 sq. ft	Yes
11	Primary Bedroom	13'6" x 11'5"	154 sq. ft	Yes
12	Foyer	6'9" x 3'8"	26 sq. ft	Yes
13	Porch	29'0" x 8'0"	216 sq. ft	No
14	Hall	17'11" x 5'8"	119 sq. ft	Yes
15	Bath	7'6" x 9'5"	56 sq. ft	Yes
16	Bedroom	10'0" x 12'8"	128 sq. ft	Yes

849 Finney Drive, Montgomery Village, Vinton, Roanoke County,
Virginia, United States, 24179

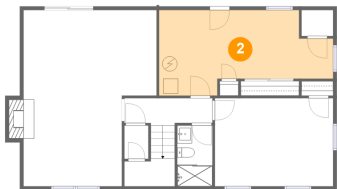
1 Floor 1 - Patio



Max Dimensions: 42'6" x 20'10"
Calculated Area: 889 sq. ft
Included: No

Heated: No
Finished: Yes
Enclosed: No
Contiguous: Yes
Permitted: Yes
Wet space: No
Addition: No
Conversion: No

2 Floor 1 - Utility



Max Dimensions: 23'4" x 11'5"
Calculated Area: 215 sq. ft
Included: No

Heated: Yes
Finished: No
Enclosed: Yes
Contiguous: Yes
Permitted: Yes
Wet space: No
Addition: No
Conversion: No

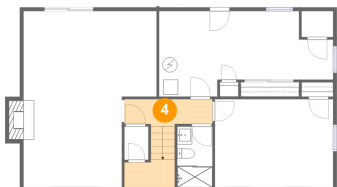
3 Floor 1 - Bath



Max Dimensions: 4'8" x 8'2"
Calculated Area: 38 sq. ft
Included: Yes

Heated: Yes
Finished: Yes
Enclosed: Yes
Contiguous: Yes
Permitted: Yes
Wet space: Yes
Addition: No
Conversion: No

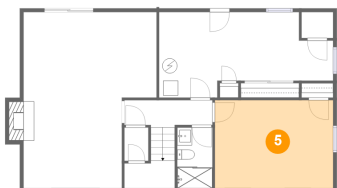
4 Floor 1 - Hall



Max Dimensions: 11'10" x 11'10"
Calculated Area: 78 sq. ft
Included: Yes

Heated: Yes
Finished: Yes
Enclosed: Yes
Contiguous: Yes
Permitted: Yes
Wet space: No
Addition: No
Conversion: No

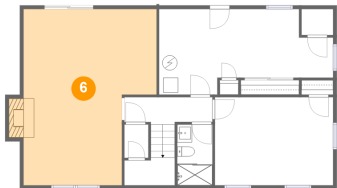
5 Floor 1 - Bedroom



Max Dimensions: 15'10" x 11'10"
Calculated Area: 187 sq. ft
Included: Yes

Heated: Yes
Finished: Yes
Enclosed: Yes
Contiguous: Yes
Permitted: Yes
Wet space: No
Addition: No
Conversion: No

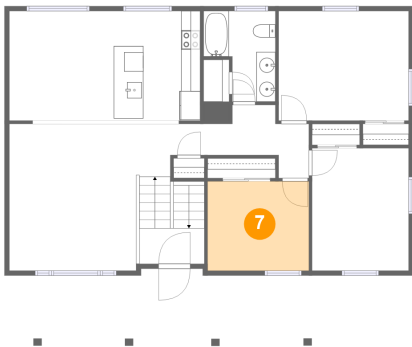
6 Floor 1 - Family Room



Max Dimensions: 17'10" x 23'7"
Calculated Area: 375 sq. ft
Included: Yes

Heated: Yes
Finished: Yes
Enclosed: Yes
Contiguous: Yes
Permitted: Yes
Wet space: No
Addition: No
Conversion: No

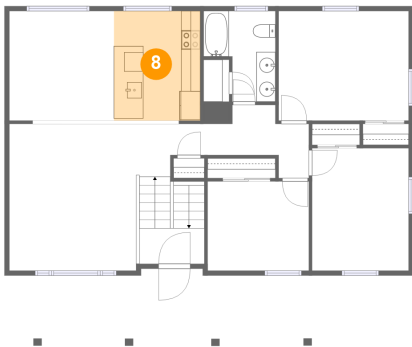
7 Floor 2 - Bedroom



Max Dimensions: 10'6" x 9'3"
Calculated Area: 98 sq. ft
Included: Yes

Heated: Yes
Finished: Yes
Enclosed: Yes
Contiguous: Yes
Permitted: Yes
Wet space: No
Addition: No
Conversion: No

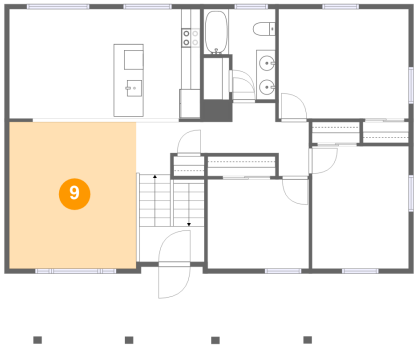
8 Floor 2 - Kitchen



Max Dimensions: 9'0" x 11'5"
Calculated Area: 102 sq. ft
Included: Yes

Heated: Yes
Finished: Yes
Enclosed: Yes
Contiguous: Yes
Permitted: Yes
Wet space: No
Addition: No
Conversion: No

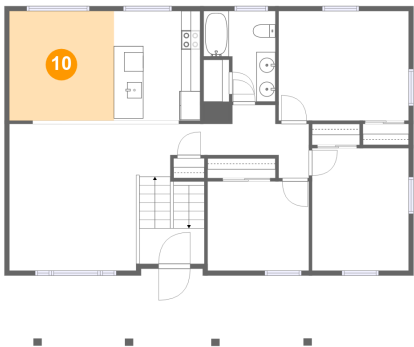
9 Floor 2 - Living Room



Max Dimensions: 13'2" x 15'3"
Calculated Area: 201 sq. ft
Included: Yes

Heated: Yes
Finished: Yes
Enclosed: Yes
Contiguous: Yes
Permitted: Yes
Wet space: No
Addition: No
Conversion: No

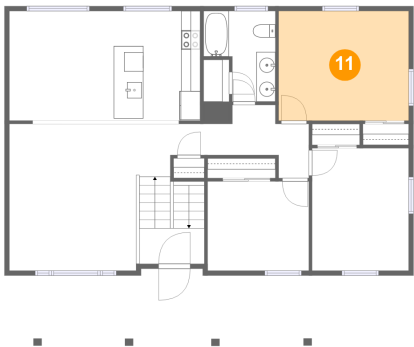
10 Floor 2 - Dining Area



Max Dimensions: 10'10" x 11'5"
Calculated Area: 124 sq. ft
Included: Yes

Heated: Yes
Finished: Yes
Enclosed: Yes
Contiguous: Yes
Permitted: Yes
Wet space: No
Addition: No
Conversion: No

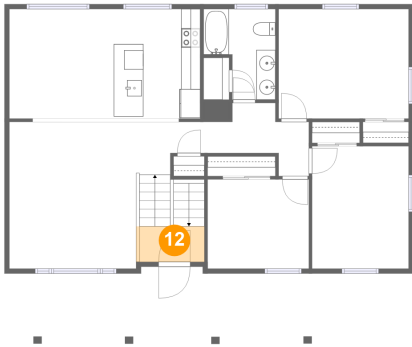
11 Floor 2 - Primary Bedroom



Max Dimensions: 13'6" x 11'5"
Calculated Area: 154 sq. ft
Included: Yes

Heated: Yes
Finished: Yes
Enclosed: Yes
Contiguous: Yes
Permitted: Yes
Wet space: No
Addition: No
Conversion: No

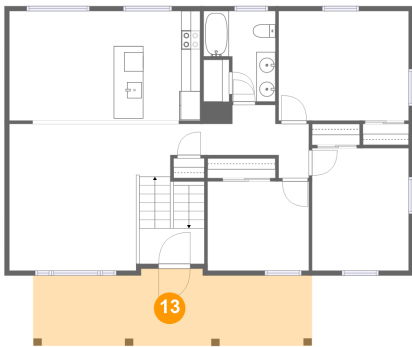
12 Floor 2 - Foyer



Max Dimensions: 6'9" x 3'8"
Calculated Area: 26 sq. ft
Included: Yes

Heated: Yes
Finished: Yes
Enclosed: Yes
Contiguous: Yes
Permitted: Yes
Wet space: No
Addition: No
Conversion: No

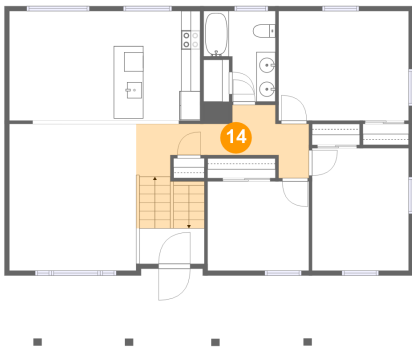
13 Floor 2 - Porch



Max Dimensions: 29'0" x 8'0"
Calculated Area: 216 sq. ft
Included: No

Heated: No
Finished: Yes
Enclosed: No
Contiguous: Yes
Permitted: Yes
Wet space: No
Addition: No
Conversion: No

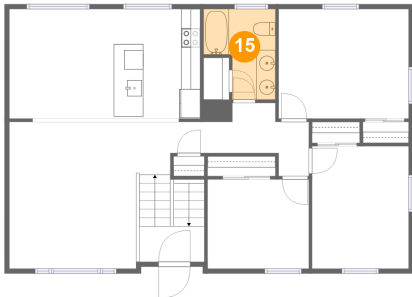
14 Floor 2 - Hall



Max Dimensions: 17'11" x 5'8"
Calculated Area: 119 sq. ft
Included: Yes

Heated: Yes
Finished: Yes
Enclosed: Yes
Contiguous: Yes
Permitted: Yes
Wet space: No
Addition: No
Conversion: No

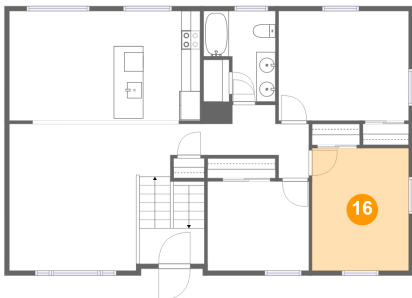
15 Floor 2 - Bath



Max Dimensions: 7'6" x 9'5"
Calculated Area: 56 sq. ft
Included: Yes

Heated: Yes
Finished: Yes
Enclosed: Yes
Contiguous: Yes
Permitted: Yes
Wet space: Yes
Addition: No
Conversion: No

16 Floor 2 - Bedroom



Max Dimensions: 10'0" x 12'8"
Calculated Area: 128 sq. ft
Included: Yes

Heated: Yes
Finished: Yes
Enclosed: Yes
Contiguous: Yes
Permitted: Yes
Wet space: No
Addition: No
Conversion: No