


Home report

618 1st Street, Leechburg, Armstrong County,
Pennsylvania, United States, 15656



Property summary

 **1** Garages

 **3** Bedrooms

 **2** Bathrooms

 **0** Half baths

 **3** Floors

 **1,689**
Gross living
area sqft

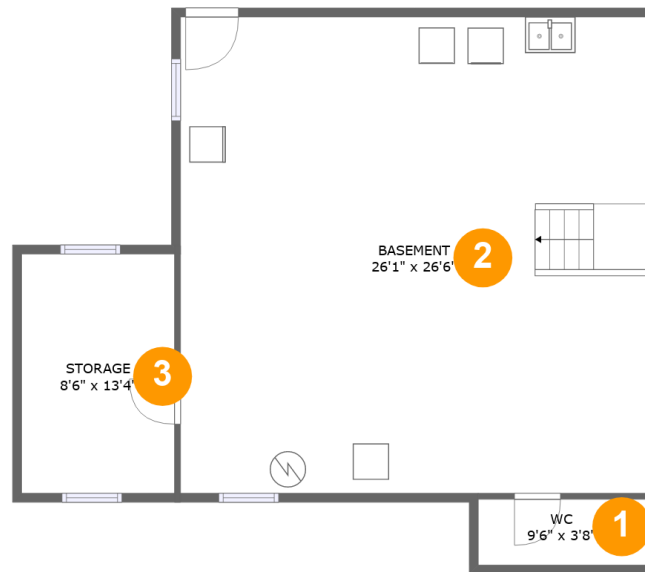
 **3,882**
Total sqft

Scan captured on Tue, 11 Mar 2025 20:02:49 GMT

Information is calculated by LIDAR technology deemed highly reliable but not guaranteed.

Home report

618 1st Street, Leechburg, Armstrong County,
Pennsylvania, United States, 15656



Room dimensions

Floor 1

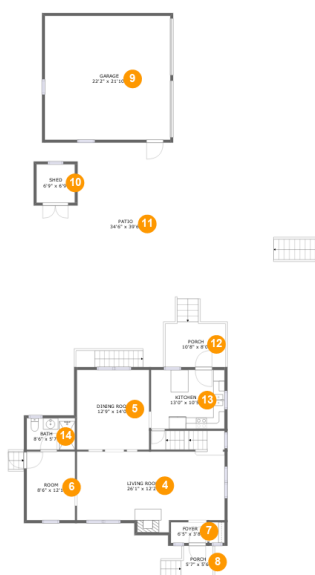
Total sqft: 913

Living area: 0

#		Dimensions	sqft	Counted as living area
1	WC	9'6" x 3'8"	35 sq. ft	No
2	Basement	26'1" x 26'6"	690 sq. ft	No
3	Storage	8'6" x 13'4"	113 sq. ft	No

Scan captured on Tue, 11 Mar 2025 20:02:49 GMT

Information is calculated by LIDAR technology deemed highly reliable but not guaranteed.



Room dimensions

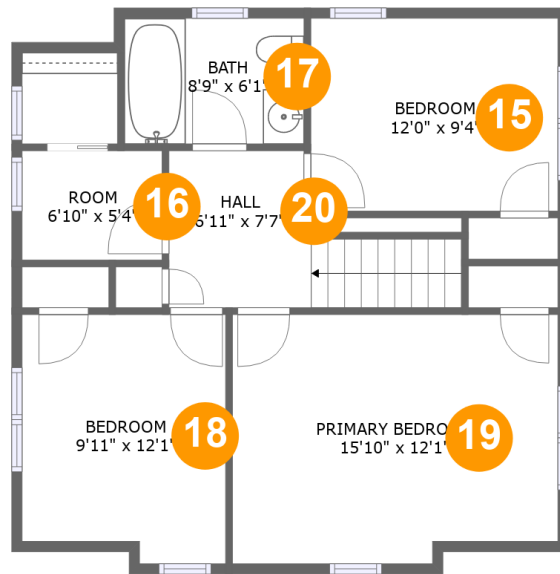
Floor 2

Total sqft: 2246 Living area: 966

#		Dimensions	sqft	Counted as living area
4	Living Room	26'1" x 12'2"	372 sq. ft	Yes
5	Dining Room	12'9" x 14'0"	182 sq. ft	Yes
6	Room	8'6" x 12'1"	103 sq. ft	Yes
7	Foyer	6'5" x 3'8"	24 sq. ft	Yes
8	Porch	5'7" x 5'6"	30 sq. ft	No
9	Garage	22'2" x 21'10"	484 sq. ft	No
10	Shed	6'9" x 6'9"	46 sq. ft	No
11	Patio	34'6" x 39'6"	578 sq. ft	No
12	Porch	10'8" x 8'0"	83 sq. ft	No
13	Kitchen	13'0" x 10'5"	135 sq. ft	Yes
14	Bath	8'6" x 5'7"	47 sq. ft	Yes

Home report

618 1st Street, Leechburg, Armstrong County,
Pennsylvania, United States, 15656



Room dimensions

Floor 3

Total sqft: 723

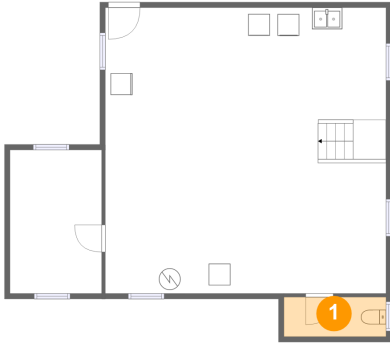
Living area: 723

#		Dimensions	sqft	Counted as living area
15	Bedroom	12'0" x 9'4"	113 sq. ft	Yes
16	Room	6'10" x 5'4"	36 sq. ft	Yes
17	Bath	8'9" x 6'1"	53 sq. ft	Yes
18	Bedroom	9'11" x 12'1"	114 sq. ft	Yes
19	Primary Bedroom	15'10" x 12'1"	185 sq. ft	Yes
20	Hall	6'11" x 7'7"	76 sq. ft	Yes

Scan captured on Tue, 11 Mar 2025 20:02:49 GMT

Information is calculated by LIDAR technology deemed highly reliable but not guaranteed.

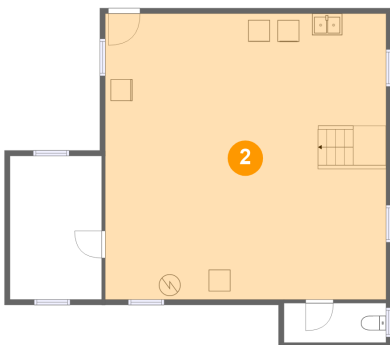
1 Floor 1 - WC



Dimensions: 9'6" x 3'8"
Area: 35 sq. ft
Counted as living area: No

Heated: Yes
Finished: No
Enclosed: Yes
Contiguous: Yes
Permitted: Yes
Wet space: Yes
Addition: No
Conversion: No

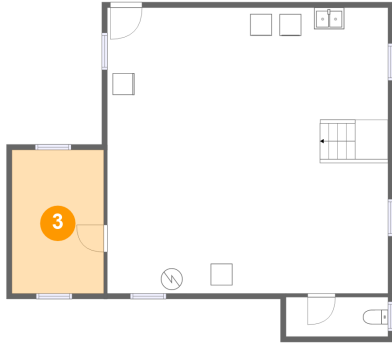
2 Floor 1 - Basement



Dimensions: 26'1" x 26'6"
Area: 690 sq. ft
Counted as living area: No

Heated: Yes
Finished: No
Enclosed: Yes
Contiguous: Yes
Permitted: Yes
Wet space: No
Addition: No
Conversion: No

3 Floor 1 - Storage



Dimensions: 8'6" x 13'4"
Area: 113 sq. ft
Counted as living area: No

Heated: No
Finished: No
Enclosed: No
Contiguous: Yes
Permitted: Yes
Wet space: No
Addition: No
Conversion: No

4 Floor 2 - Living Room



Dimensions: 26'1" x 12'2"
Area: 372 sq. ft
Counted as living area: Yes

Heated: Yes
Finished: Yes
Enclosed: Yes
Contiguous: Yes
Permitted: Yes
Wet space: No
Addition: No
Conversion: No

5 Floor 2 - Dining Room



Dimensions: 12'9" x 14'0"
Area: 182 sq. ft
Counted as living area: Yes

Heated: Yes
Finished: Yes
Enclosed: Yes
Contiguous: Yes
Permitted: Yes
Wet space: No
Addition: No
Conversion: No

6 Floor 2 - Room



Dimensions: 8'6" x 12'1"
Area: 103 sq. ft
Counted as living area: Yes

Heated: Yes
Finished: Yes
Enclosed: Yes
Contiguous: Yes
Permitted: Yes
Wet space: No
Addition: No
Conversion: No

7 Floor 2 - Foyer



Dimensions: 6'5" x 3'8"
Area: 24 sq. ft
Counted as living area: Yes

Heated: Yes
Finished: Yes
Enclosed: Yes
Contiguous: Yes
Permitted: Yes
Wet space: No
Addition: No
Conversion: No

8 Floor 2 - Porch



Dimensions: 5'7" x 5'6"
Area: 30 sq. ft
Counted as living area: No

Heated: No
Finished: Yes
Enclosed: No
Contiguous: Yes
Permitted: Yes
Wet space: No
Addition: No
Conversion: No

9 Floor 2 - Garage



Dimensions: 22'2" x 21'10"
Area: 484 sq. ft
Counted as living area: No

Heated: No
Finished: No
Enclosed: Yes
Contiguous: Yes
Permitted: Yes
Wet space: No
Addition: No
Conversion: No

10 Floor 2 - Shed



Dimensions: 6'9" x 6'9"
Area: 46 sq. ft
Counted as living area: No

Heated: No
Finished: No
Enclosed: No
Contiguous: Yes
Permitted: Yes
Wet space: No
Addition: No
Conversion: No

11 Floor 2 - Patio



Dimensions: 34'6" x 39'6"
Area: 578 sq. ft
Counted as living area: No

Heated: No
Finished: Yes
Enclosed: No
Contiguous: Yes
Permitted: Yes
Wet space: No
Addition: No
Conversion: No

618 1st Street, Leechburg, Armstrong County,
Pennsylvania, United States, 15656

12 Floor 2 - Porch



Dimensions: 10'8" x 8'0"
Area: 83 sq. ft
Counted as living area: No

Heated: No
Finished: Yes
Enclosed: No
Contiguous: Yes
Permitted: Yes
Wet space: No
Addition: No
Conversion: No

13 Floor 2 - Kitchen



Dimensions: 13'0" x 10'5"
Area: 135 sq. ft
Counted as living area: Yes

Heated: Yes
Finished: Yes
Enclosed: Yes
Contiguous: Yes
Permitted: Yes
Wet space: No
Addition: No
Conversion: No

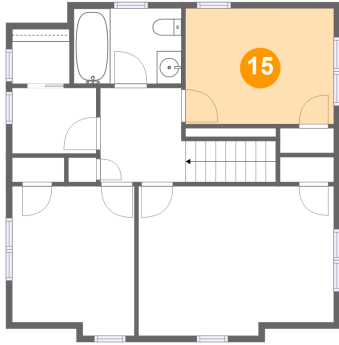
14 Floor 2 - Bath



Dimensions: 8'6" x 5'7"
Area: 47 sq. ft
Counted as living area: Yes

Heated: Yes
Finished: Yes
Enclosed: Yes
Contiguous: Yes
Permitted: Yes
Wet space: Yes
Addition: No
Conversion: No

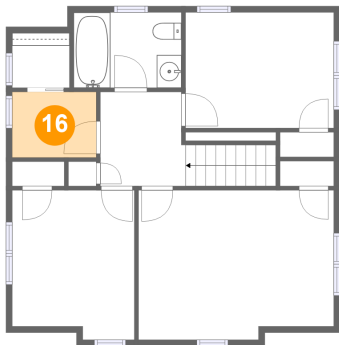
15 Floor 3 - Bedroom



Dimensions: 12'0" x 9'4"
Area: 113 sq. ft
Counted as living area: Yes

Heated: Yes
Finished: Yes
Enclosed: Yes
Contiguous: Yes
Permitted: Yes
Wet space: No
Addition: No
Conversion: No

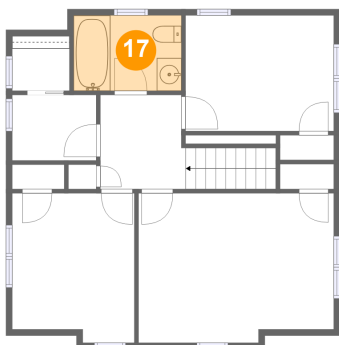
16 Floor 3 - Room



Dimensions: 6'10" x 5'4"
Area: 36 sq. ft
Counted as living area: Yes

Heated: Yes
Finished: Yes
Enclosed: Yes
Contiguous: Yes
Permitted: Yes
Wet space: No
Addition: No
Conversion: No

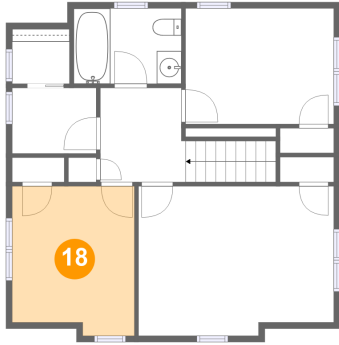
17 Floor 3 - Bath



Dimensions: 8'9" x 6'1"
Area: 53 sq. ft
Counted as living area: Yes

Heated: Yes
Finished: Yes
Enclosed: Yes
Contiguous: Yes
Permitted: Yes
Wet space: Yes
Addition: No
Conversion: No

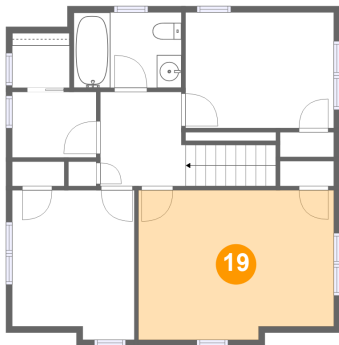
18 Floor 3 - Bedroom



Dimensions: 9'11" x 12'1"
Area: 114 sq. ft
Counted as living area: Yes

Heated: Yes
Finished: Yes
Enclosed: Yes
Contiguous: Yes
Permitted: Yes
Wet space: No
Addition: No
Conversion: No

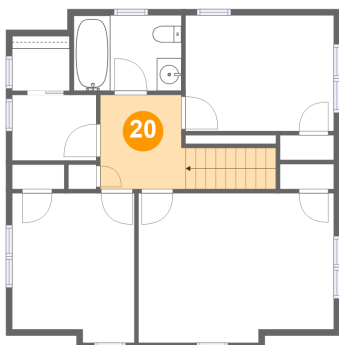
19 Floor 3 - Primary Bedroom



Dimensions: 15'10" x 12'1"
Area: 185 sq. ft
Counted as living area: Yes

Heated: Yes
Finished: Yes
Enclosed: Yes
Contiguous: Yes
Permitted: Yes
Wet space: No
Addition: No
Conversion: No

20 Floor 3 - Hall



Dimensions: 6'11" x 7'7"
Area: 76 sq. ft
Counted as living area: Yes

Heated: Yes
Finished: Yes
Enclosed: Yes
Contiguous: Yes
Permitted: Yes
Wet space: No
Addition: No
Conversion: No