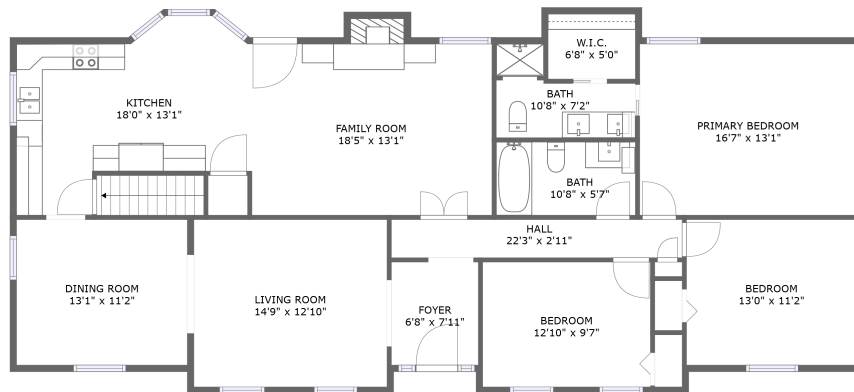
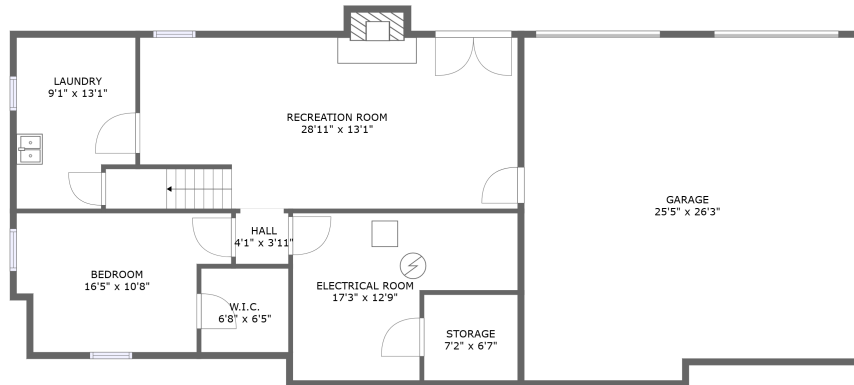


7208 Iron Gate Court, Green Spring, Kentucky 40241, United States




FLOOR 2



FLOOR 1

Property summary


 **1** Garages

 **4** Bedrooms

 **2** Bathrooms

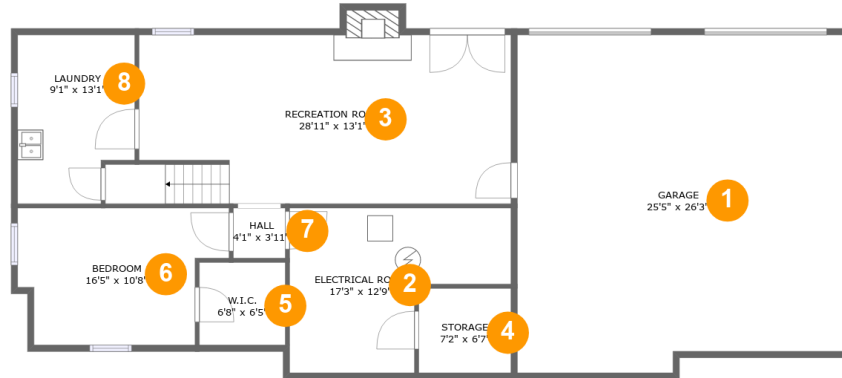
 **0** Half baths

 **2** Floors

 **2,421** Gross living area sqft

 **3,486** Total sqft

7208 Iron Gate Court, Green Spring, Kentucky 40241, United States



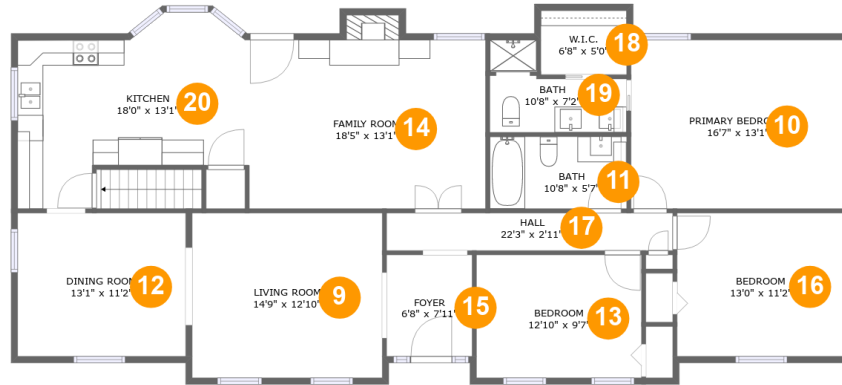
Room dimensions

Floor 1

Total sqft: 1718 Living area: 663

#		Dimensions	sqft	Counted as living area
1	Garage	25'5" x 26'3"	646 sq. ft	No
2	Electrical Room	17'3" x 12'9"	169 sq. ft	No
3	Recreation Room	28'11" x 13'1"	393 sq. ft	Yes
4	Storage	7'2" x 6'7"	47 sq. ft	No
5	W.I.C.	6'8" x 6'5"	43 sq. ft	Yes
6	Bedroom	16'5" x 10'8"	152 sq. ft	Yes
7	Hall	4'1" x 3'11"	16 sq. ft	Yes
8	Laundry	9'1" x 13'1"	111 sq. ft	No

7208 Iron Gate Court, Green Spring, Kentucky 40241, United States



Room dimensions

Floor 2

Total sqft: 1768 Living area: 1758

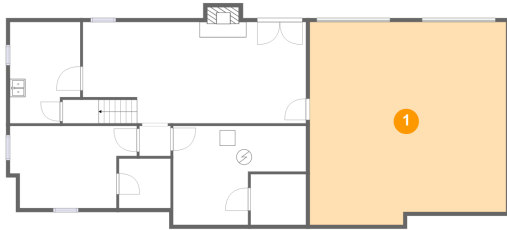
#		Dimensions	sqft	Counted as living area
9	Living Room	14'9" x 12'10"	190 sq. ft	Yes
10	Primary Bedroom	16'7" x 13'1"	218 sq. ft	Yes
11	Bath	10'8" x 5'7"	60 sq. ft	Yes
12	Dining Room	13'1" x 11'2"	146 sq. ft	Yes
13	Bedroom	12'10" x 9'7"	123 sq. ft	Yes
14	Family Room	18'5" x 13'1"	249 sq. ft	Yes
15	Foyer	6'8" x 7'11"	53 sq. ft	Yes
16	Bedroom	13'0" x 11'2"	145 sq. ft	Yes
17	Hall	22'3" x 2'11"	65 sq. ft	Yes
18	W.I.C.	6'8" x 5'0"	33 sq. ft	Yes
19	Bath	10'8" x 7'2"	55 sq. ft	Yes

7208 Iron Gate Court, Green Spring, Kentucky 40241, United States

#		Dimensions	sqft	Counted as living area
20	Kitchen	18'0" x 13'1"	209 sq. ft	Yes

7208 Iron Gate Court, Green Spring, Kentucky 40241, United States

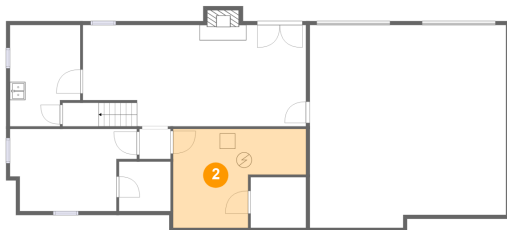
1 Floor 1 - Garage



Dimensions: 25'5" x 26'3"
Area: 646 sq. ft
Counted as living area: No

Heated: No
Finished: No
Enclosed: Yes
Contiguous: Yes
Permitted: Yes
Wet space: No
Addition: No
Conversion: No

2 Floor 1 - Electrical Room

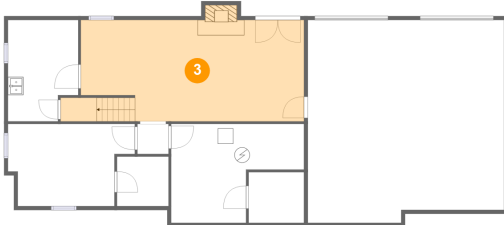


Dimensions: 17'3" x 12'9"
Area: 169 sq. ft
Counted as living area: No

Heated: No
Finished: No
Enclosed: Yes
Contiguous: Yes
Permitted: Yes
Wet space: No
Addition: No
Conversion: No

7208 Iron Gate Court, Green Spring, Kentucky 40241, United States

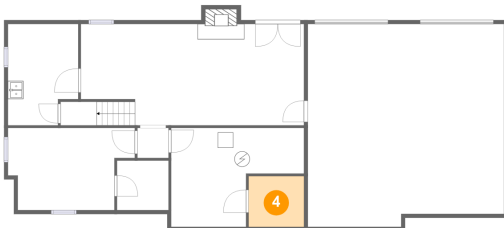
3 Floor 1 - Recreation Room



Dimensions: 28'11" x 13'1"
Area: 393 sq. ft
Counted as living area: Yes

Heated: Yes
Finished: Yes
Enclosed: Yes
Contiguous: Yes
Permitted: Yes
Wet space: No
Addition: No
Conversion: No

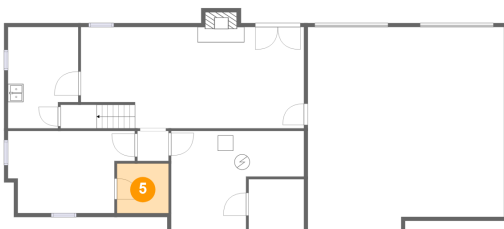
4 Floor 1 - Storage



Dimensions: 7'2" x 6'7"
Area: 47 sq. ft
Counted as living area: No

Heated: No
Finished: No
Enclosed: No
Contiguous: Yes
Permitted: Yes
Wet space: No
Addition: No
Conversion: No

5 Floor 1 - W.I.C.

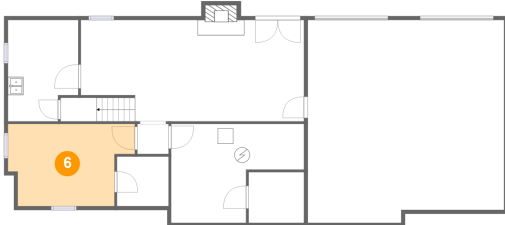


Dimensions: 6'8" x 6'5"
Area: 43 sq. ft
Counted as living area: Yes

Heated: Yes
Finished: Yes
Enclosed: Yes
Contiguous: Yes
Permitted: Yes
Wet space: No
Addition: No
Conversion: No

7208 Iron Gate Court, Green Spring, Kentucky 40241, United States

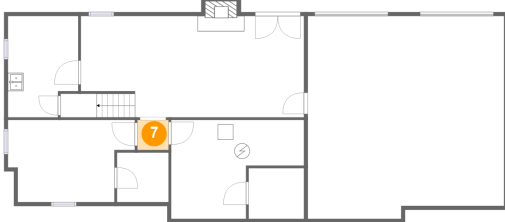
6 Floor 1 - Bedroom



Dimensions: 16'5" x 10'8"
Area: 152 sq. ft
Counted as living area: Yes

Heated: Yes
Finished: Yes
Enclosed: Yes
Contiguous: Yes
Permitted: Yes
Wet space: No
Addition: No
Conversion: No

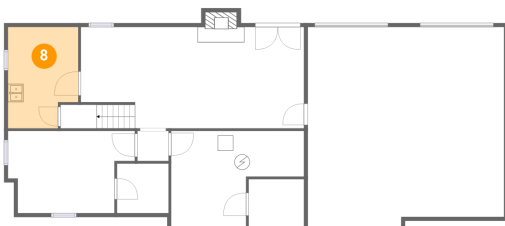
7 Floor 1 - Hall



Dimensions: 4'1" x 3'11"
Area: 16 sq. ft
Counted as living area: Yes

Heated: Yes
Finished: Yes
Enclosed: Yes
Contiguous: Yes
Permitted: Yes
Wet space: No
Addition: No
Conversion: No

8 Floor 1 - Laundry

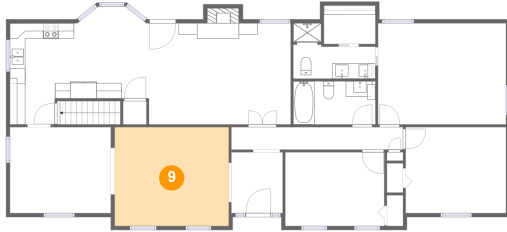


Dimensions: 9'1" x 13'1"
Area: 111 sq. ft
Counted as living area: No

Heated: Yes
Finished: No
Enclosed: Yes
Contiguous: Yes
Permitted: Yes
Wet space: No
Addition: No
Conversion: No

7208 Iron Gate Court, Green Spring, Kentucky 40241, United States

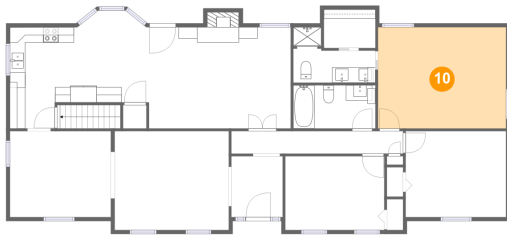
9 Floor 2 - Living Room



Dimensions: 14'9" x 12'10"
Area: 190 sq. ft
Counted as living area: Yes

Heated: Yes
Finished: Yes
Enclosed: Yes
Contiguous: Yes
Permitted: Yes
Wet space: No
Addition: No
Conversion: No

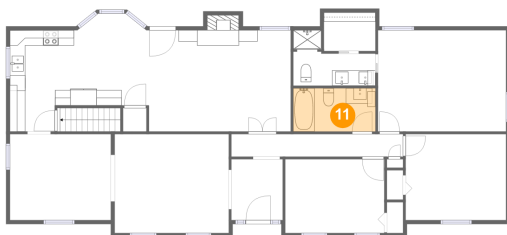
10 Floor 2 - Primary Bedroom



Dimensions: 16'7" x 13'1"
Area: 218 sq. ft
Counted as living area: Yes

Heated: Yes
Finished: Yes
Enclosed: Yes
Contiguous: Yes
Permitted: Yes
Wet space: No
Addition: No
Conversion: No

11 Floor 2 - Bath



Dimensions: 10'8" x 5'7"
Area: 60 sq. ft
Counted as living area: Yes

Heated: Yes
Finished: Yes
Enclosed: Yes
Contiguous: Yes
Permitted: Yes
Wet space: Yes
Addition: No
Conversion: No

7208 Iron Gate Court, Green Spring, Kentucky 40241, United States

12 Floor 2 - Dining Room



Dimensions: 13'1" x 11'2"
Area: 146 sq. ft
Counted as living area: Yes

Heated: Yes
Finished: Yes
Enclosed: Yes
Contiguous: Yes
Permitted: Yes
Wet space: No
Addition: No
Conversion: No

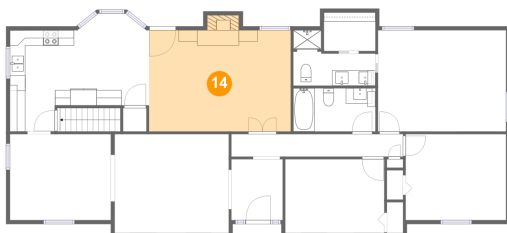
13 Floor 2 - Bedroom



Dimensions: 12'10" x 9'7"
Area: 123 sq. ft
Counted as living area: Yes

Heated: Yes
Finished: Yes
Enclosed: Yes
Contiguous: Yes
Permitted: Yes
Wet space: No
Addition: No
Conversion: No

14 Floor 2 - Family Room



Dimensions: 18'5" x 13'1"
Area: 249 sq. ft
Counted as living area: Yes

Heated: Yes
Finished: Yes
Enclosed: Yes
Contiguous: Yes
Permitted: Yes
Wet space: No
Addition: No
Conversion: No

7208 Iron Gate Court, Green Spring, Kentucky 40241, United States

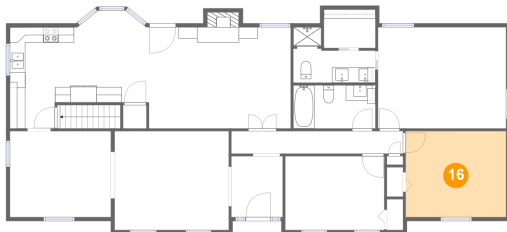
15 Floor 2 - Foyer



Dimensions: 6'8" x 7'11"
Area: 53 sq. ft
Counted as living area: Yes

Heated: Yes
Finished: Yes
Enclosed: Yes
Contiguous: Yes
Permitted: Yes
Wet space: No
Addition: No
Conversion: No

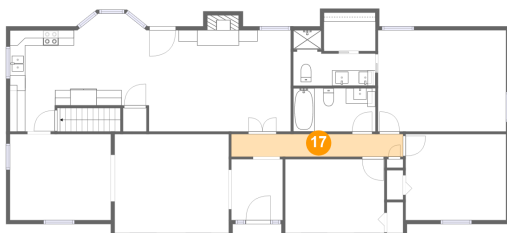
16 Floor 2 - Bedroom



Dimensions: 13'0" x 11'2"
Area: 145 sq. ft
Counted as living area: Yes

Heated: Yes
Finished: Yes
Enclosed: Yes
Contiguous: Yes
Permitted: Yes
Wet space: No
Addition: No
Conversion: No

17 Floor 2 - Hall

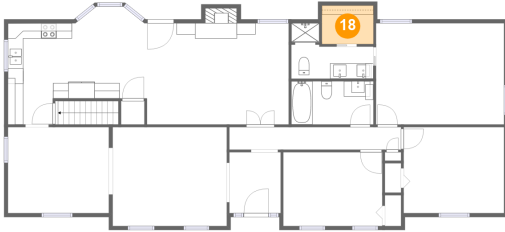


Dimensions: 22'3" x 2'11"
Area: 65 sq. ft
Counted as living area: Yes

Heated: Yes
Finished: Yes
Enclosed: Yes
Contiguous: Yes
Permitted: Yes
Wet space: No
Addition: No
Conversion: No

7208 Iron Gate Court, Green Spring, Kentucky 40241, United States

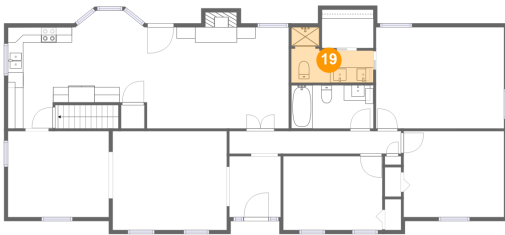
18 Floor 2 - W.I.C.



Dimensions: 6'8" x 5'0"
Area: 33 sq. ft
Counted as living area: Yes

Heated: Yes
Finished: Yes
Enclosed: Yes
Contiguous: Yes
Permitted: Yes
Wet space: No
Addition: No
Conversion: No

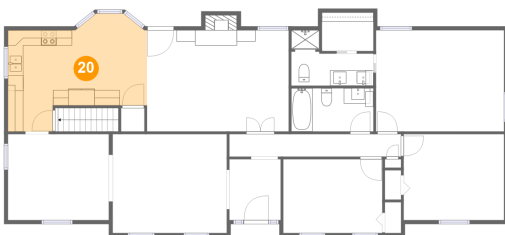
19 Floor 2 - Bath



Dimensions: 10'8" x 7'2"
Area: 55 sq. ft
Counted as living area: Yes

Heated: Yes
Finished: Yes
Enclosed: Yes
Contiguous: Yes
Permitted: Yes
Wet space: Yes
Addition: No
Conversion: No

20 Floor 2 - Kitchen



Dimensions: 18'0" x 13'1"
Area: 209 sq. ft
Counted as living area: Yes

Heated: Yes
Finished: Yes
Enclosed: Yes
Contiguous: Yes
Permitted: Yes
Wet space: No
Addition: No
Conversion: No