

# 867 Washington Street, Harpers Ferry, Jefferson County, West Virginia, United States, 25425, b



## Property summary

 **0** Garages

 **5** Bedrooms

 **4** Bathrooms

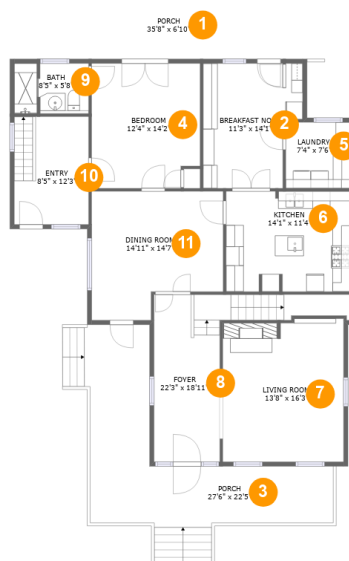
 **0** Half baths

 **2** Floors

 **2,590** Gross living area sqft

 **3,284** Total sqft

# 867 Washington Street, Harpers Ferry, Jefferson County, West Virginia, United States, 25425, b



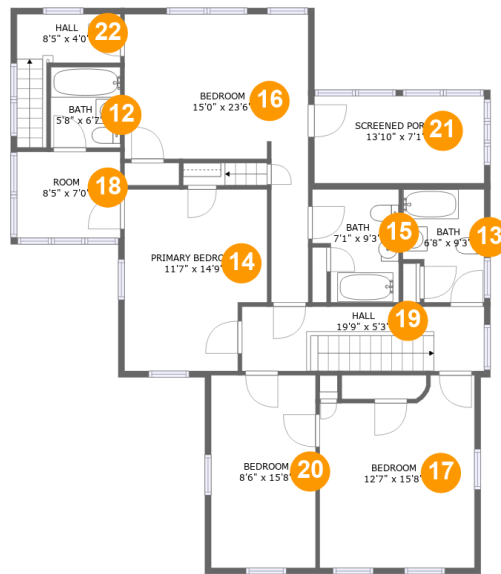
## Room dimensions

Floor 1

Total sqft: 1939 Living area: 1401

#		Dimensions	sqft	Counted as living area
1	Porch	35'8" x 6'10"	242 sq. ft	No
2	Breakfast Nook	11'3" x 14'1"	141 sq. ft	Yes
3	Porch	27'6" x 22'5"	292 sq. ft	No
4	Bedroom	12'4" x 14'2"	168 sq. ft	Yes
5	Laundry	7'4" x 7'6"	55 sq. ft	Yes
6	Kitchen	14'1" x 11'4"	159 sq. ft	Yes
7	Living Room	13'8" x 16'3"	217 sq. ft	Yes
8	Foyer	22'3" x 18'11"	181 sq. ft	Yes
9	Bath	8'5" x 5'8"	47 sq. ft	Yes
10	Entry	8'5" x 12'3"	103 sq. ft	Yes
11	Dining Room	14'11" x 14'7"	191 sq. ft	Yes

# 867 Washington Street, Harpers Ferry, Jefferson County, West Virginia, United States, 25425, b



## Room dimensions

Floor 2

Total sqft: 1345 Living area: 1189

#		Dimensions	sqft	Counted as living area
12	Bath	5'8" x 6'7"	37 sq. ft	Yes
13	Bath	6'8" x 9'3"	55 sq. ft	Yes
14	Primary Bedroom	11'7" x 14'9"	159 sq. ft	Yes
15	Bath	7'1" x 9'3"	58 sq. ft	Yes
16	Bedroom	15'0" x 23'6"	213 sq. ft	Yes
17	Bedroom	12'7" x 15'8"	178 sq. ft	Yes
18	Room	8'5" x 7'0"	59 sq. ft	Yes
19	Hall	19'9" x 5'3"	104 sq. ft	Yes
20	Bedroom	8'6" x 15'8"	134 sq. ft	Yes
21	Screened Porch	13'10" x 7'1"	98 sq. ft	No
22	Hall	8'5" x 4'0"	50 sq. ft	Yes

# 867 Washington Street, Harpers Ferry, Jefferson County, West Virginia, United States, 25425, b

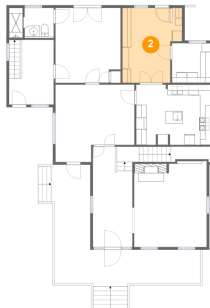
## 1 Floor 1 - Porch



Dimensions: 35'8" x 6'10"  
Area: 242 sq. ft  
Counted as living area: No

Heated: No  
Finished: Yes  
Enclosed: No  
Contiguous: Yes  
Permitted: Yes  
Wet space: No  
Addition: No  
Conversion: No

## 2 Floor 1 - Breakfast Nook



Dimensions: 11'3" x 14'1"  
Area: 141 sq. ft  
Counted as living area: Yes

Heated: Yes  
Finished: Yes  
Enclosed: Yes  
Contiguous: Yes  
Permitted: Yes  
Wet space: No  
Addition: No  
Conversion: No

# 867 Washington Street, Harpers Ferry, Jefferson County, West Virginia, United States, 25425, b

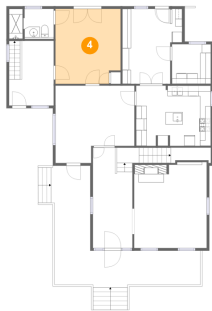
## 3 Floor 1 - Porch



Dimensions: 27'6" x 22'5"  
Area: 292 sq. ft  
Counted as living area: No

Heated: No  
Finished: Yes  
Enclosed: No  
Contiguous: Yes  
Permitted: Yes  
Wet space: No  
Addition: No  
Conversion: No

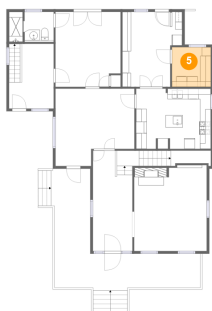
## 4 Floor 1 - Bedroom



Dimensions: 12'4" x 14'2"  
Area: 168 sq. ft  
Counted as living area: Yes

Heated: Yes  
Finished: Yes  
Enclosed: Yes  
Contiguous: Yes  
Permitted: Yes  
Wet space: No  
Addition: No  
Conversion: No

## 5 Floor 1 - Laundry

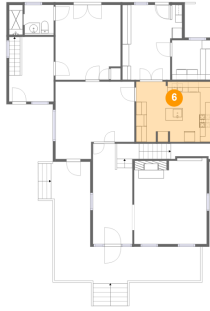


Dimensions: 7'4" x 7'6"  
Area: 55 sq. ft  
Counted as living area: Yes

Heated: Yes  
Finished: Yes  
Enclosed: Yes  
Contiguous: Yes  
Permitted: Yes  
Wet space: No  
Addition: No  
Conversion: No

# 867 Washington Street, Harpers Ferry, Jefferson County, West Virginia, United States, 25425, b

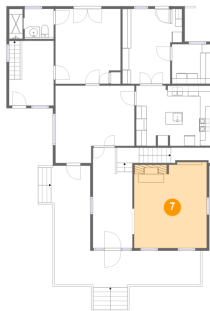
## 6 Floor 1 - Kitchen



Dimensions: 14'1" x 11'4"  
Area: 159 sq. ft  
Counted as living area: Yes

Heated: Yes  
Finished: Yes  
Enclosed: Yes  
Contiguous: Yes  
Permitted: Yes  
Wet space: No  
Addition: No  
Conversion: No

## 7 Floor 1 - Living Room



Dimensions: 13'8" x 16'3"  
Area: 217 sq. ft  
Counted as living area: Yes

Heated: Yes  
Finished: Yes  
Enclosed: Yes  
Contiguous: Yes  
Permitted: Yes  
Wet space: No  
Addition: No  
Conversion: No

## 8 Floor 1 - Foyer



Dimensions: 22'3" x 18'11"  
Area: 181 sq. ft  
Counted as living area: Yes

Heated: Yes  
Finished: Yes  
Enclosed: Yes  
Contiguous: Yes  
Permitted: Yes  
Wet space: No  
Addition: No  
Conversion: No

# 867 Washington Street, Harpers Ferry, Jefferson County, West Virginia, United States, 25425, b

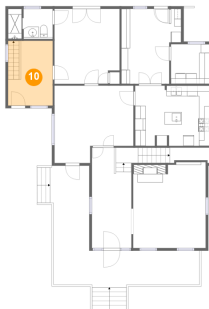
## 9 Floor 1 - Bath



Dimensions: 8'5" x 5'8"  
Area: 47 sq. ft  
Counted as living area: Yes

Heated: Yes  
Finished: Yes  
Enclosed: Yes  
Contiguous: Yes  
Permitted: Yes  
Wet space: Yes  
Addition: No  
Conversion: No

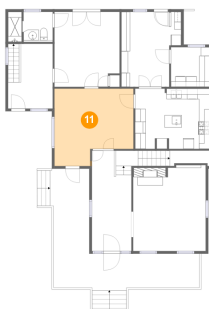
## 10 Floor 1 - Entry



Dimensions: 8'5" x 12'3"  
Area: 103 sq. ft  
Counted as living area: Yes

Heated: Yes  
Finished: Yes  
Enclosed: Yes  
Contiguous: Yes  
Permitted: Yes  
Wet space: No  
Addition: No  
Conversion: No

## 11 Floor 1 - Dining Room

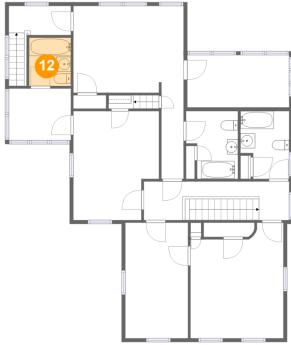


Dimensions: 14'11" x 14'7"  
Area: 191 sq. ft  
Counted as living area: Yes

Heated: Yes  
Finished: Yes  
Enclosed: Yes  
Contiguous: Yes  
Permitted: Yes  
Wet space: No  
Addition: No  
Conversion: No

# 867 Washington Street, Harpers Ferry, Jefferson County, West Virginia, United States, 25425, b

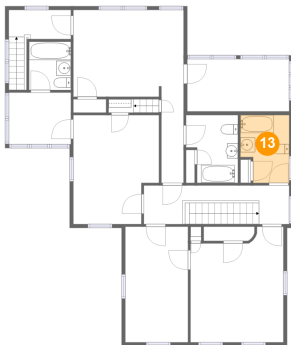
## 12 Floor 2 - Bath



Dimensions: 5'8" x 6'7"  
Area: 37 sq. ft  
Counted as living area: Yes

Heated: Yes  
Finished: Yes  
Enclosed: Yes  
Contiguous: Yes  
Permitted: Yes  
Wet space: Yes  
Addition: No  
Conversion: No

## 13 Floor 2 - Bath



Dimensions: 6'8" x 9'3"  
Area: 55 sq. ft  
Counted as living area: Yes

Heated: Yes  
Finished: Yes  
Enclosed: Yes  
Contiguous: Yes  
Permitted: Yes  
Wet space: Yes  
Addition: No  
Conversion: No

## 14 Floor 2 - Primary Bedroom



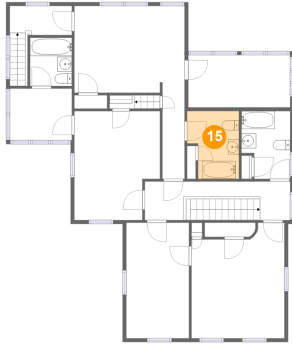
Dimensions: 11'7" x 14'9"  
Area: 159 sq. ft  
Counted as living area: Yes

Heated: Yes  
Finished: Yes  
Enclosed: Yes  
Contiguous: Yes  
Permitted: Yes  
Wet space: No  
Addition: No  
Conversion: No



**867 Washington Street, Harpers Ferry, Jefferson  
County, West Virginia, United States, 25425, b**

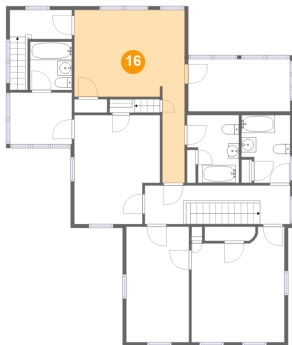
**15 Floor 2 - Bath**



**Dimensions: 7'1" x 9'3"**  
**Area: 58 sq. ft**  
**Counted as living area: Yes**

**Heated: Yes**  
**Finished: Yes**  
**Enclosed: Yes**  
**Contiguous: Yes**  
**Permitted: Yes**  
**Wet space: Yes**  
**Addition: No**  
**Conversion: No**

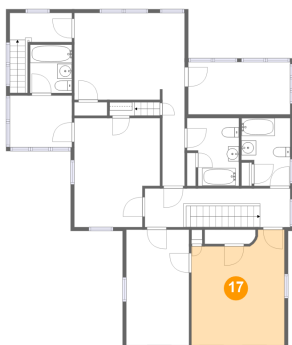
**16 Floor 2 - Bedroom**



**Dimensions: 15'0" x 23'6"**  
**Area: 213 sq. ft**  
**Counted as living area: Yes**

**Heated: Yes**  
**Finished: Yes**  
**Enclosed: Yes**  
**Contiguous: Yes**  
**Permitted: Yes**  
**Wet space: No**  
**Addition: No**  
**Conversion: No**

**17 Floor 2 - Bedroom**

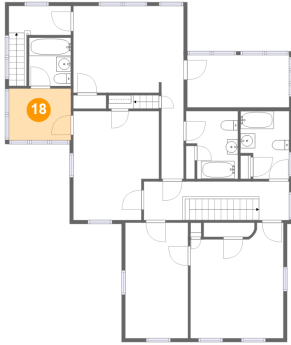


**Dimensions: 12'7" x 15'8"**  
**Area: 178 sq. ft**  
**Counted as living area: Yes**

**Heated: Yes**  
**Finished: Yes**  
**Enclosed: Yes**  
**Contiguous: Yes**  
**Permitted: Yes**  
**Wet space: No**  
**Addition: No**  
**Conversion: No**

# 867 Washington Street, Harpers Ferry, Jefferson County, West Virginia, United States, 25425, b

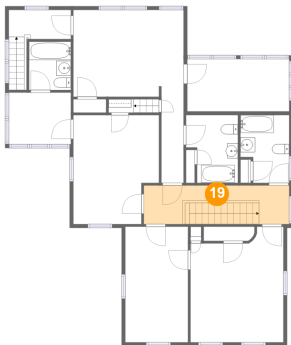
## 18 Floor 2 - Room



Dimensions: 8'5" x 7'0"  
Area: 59 sq. ft  
Counted as living area: Yes

Heated: Yes  
Finished: Yes  
Enclosed: Yes  
Contiguous: Yes  
Permitted: Yes  
Wet space: No  
Addition: No  
Conversion: No

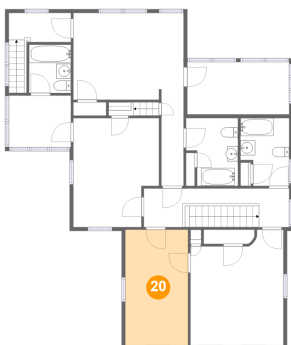
## 19 Floor 2 - Hall



Dimensions: 19'9" x 5'3"  
Area: 104 sq. ft  
Counted as living area: Yes

Heated: Yes  
Finished: Yes  
Enclosed: Yes  
Contiguous: Yes  
Permitted: Yes  
Wet space: No  
Addition: No  
Conversion: No

## 20 Floor 2 - Bedroom



Dimensions: 8'6" x 15'8"  
Area: 134 sq. ft  
Counted as living area: Yes

Heated: Yes  
Finished: Yes  
Enclosed: Yes  
Contiguous: Yes  
Permitted: Yes  
Wet space: No  
Addition: No  
Conversion: No

**867 Washington Street, Harpers Ferry, Jefferson  
County, West Virginia, United States, 25425, b**

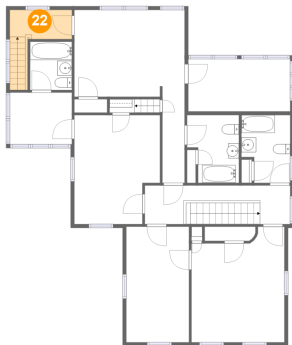
**21 Floor 2 - Screened Porch**



**Dimensions:** 13'10" x 7'1"  
**Area:** 98 sq. ft  
**Counted as living area:** No

**Heated:** No  
**Finished:** Yes  
**Enclosed:** No  
**Contiguous:** Yes  
**Permitted:** Yes  
**Wet space:** No  
**Addition:** No  
**Conversion:** No

**22 Floor 2 - Hall**



**Dimensions:** 8'5" x 4'0"  
**Area:** 50 sq. ft  
**Counted as living area:** Yes

**Heated:** Yes  
**Finished:** Yes  
**Enclosed:** Yes  
**Contiguous:** Yes  
**Permitted:** Yes  
**Wet space:** No  
**Addition:** No  
**Conversion:** No