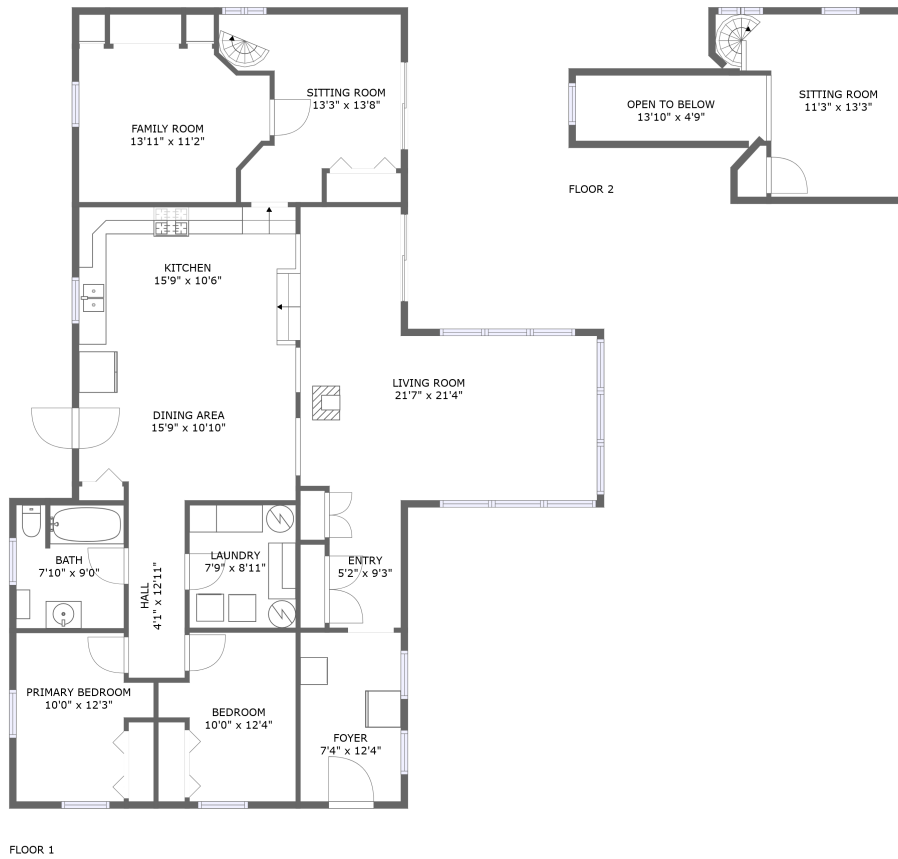


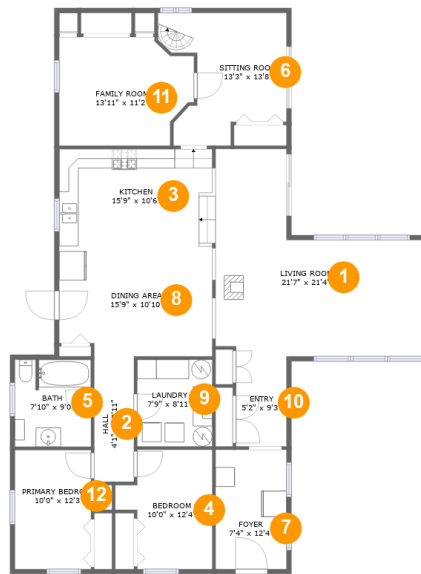
10293 Connecticut Ave, Wolcott, New York, United States



Property Summary

0 garages **2** bedrooms **1** bathrooms **0** half baths

2 floors **1,712** Gross Living Area sqft **1,969** total sqft

10293 Connecticut Ave, Wolcott, New York, United States**Room Dimensions****Floor 1****Total sqft: 1712****Living area: 1712**

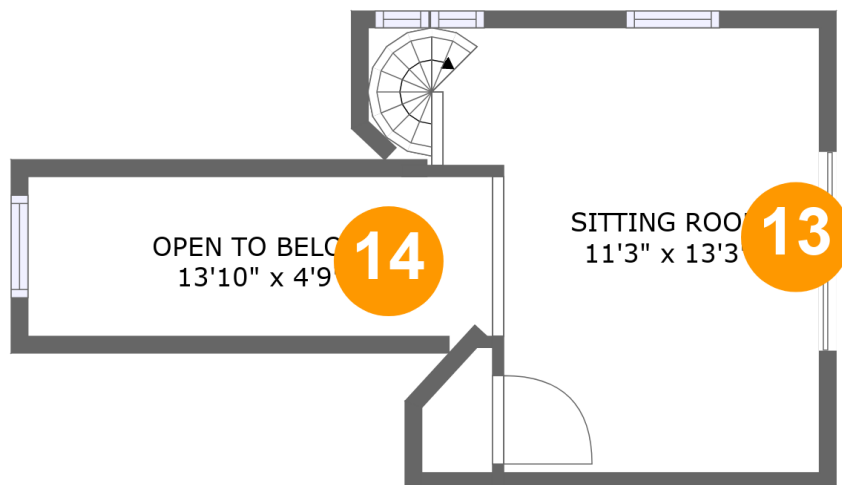
#	Room name	Dimensions	Area (sqft)	Counted as Living Area
1	Living Room	21'7" x 21'4"	325 sq. ft	Yes
2	Hall	4'1" x 12'11"	53 sq. ft	Yes
3	Kitchen	15'9" x 10'6"	169 sq. ft	Yes
4	Bedroom	10'0" x 12'4"	101 sq. ft	Yes
5	Bath	7'10" x 9'0"	69 sq. ft	Yes
6	Sitting Room	13'3" x 13'8"	136 sq. ft	Yes
7	Foyer	7'4" x 12'4"	90 sq. ft	Yes
8	Dining Area	15'9" x 10'10"	168 sq. ft	Yes
9	Laundry	7'9" x 8'11"	69 sq. ft	Yes
10	Entry	5'2" x 9'3"	48 sq. ft	Yes
11	Family Room	13'11" x 11'2"	140 sq. ft	Yes

Scan captured on Sun, 08 Sep 2024 00:31:19 GMT

Information is calculated by CubiCasa technology; deemed highly reliable but not guaranteed.

10293 Connecticut Ave, Wolcott, New York, United States

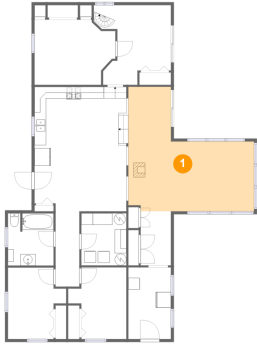
#	Room name	Dimensions	Area (sqft)	Counted as Living Area
12	Primary Bedroom	10'0" x 12'3"	102 sq. ft	Yes

10293 Connecticut Ave, Wolcott, New York, United States**Room Dimensions****Floor 2****Total sqft: 257****Living area: 0**

#	Room name	Dimensions	Area (sqft)	Counted as Living Area
13	Sitting Room	11'3" x 13'3"	143 sq. ft	No
14	Open To Below	13'10" x 4'9"	66 sq. ft	No

10293 Connecticut Ave, Wolcott, New York, United States

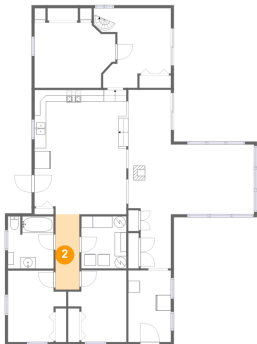
1 Floor 1 - Living Room



Dimensions: 21'7" x 21'4"
Area: 325 sq. ft
Counted as Living Area:
Yes

Heated: Yes
Finished: Yes
Enclosed: Yes
Contiguous:
Yes
Permitted: Yes
Wet Space: No
Addition: No
Conversion: No

2 Floor 1 - Hall

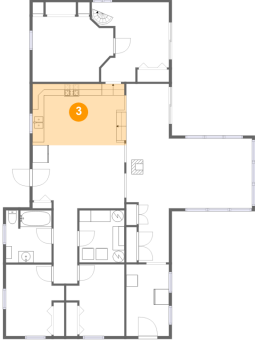


Dimensions: 4'1" x 12'11"
Area: 53 sq. ft
Counted as Living Area:
Yes

Heated: Yes
Finished: Yes
Enclosed: Yes
Contiguous:
Yes
Permitted: Yes
Wet Space: No
Addition: No
Conversion: No

10293 Connecticut Ave, Wolcott, New York, United States

3 Floor 1 - Kitchen



Dimensions: 15'9" x 10'6"
Area: 169 sq. ft
Counted as Living Area:
Yes

Heated: Yes
Finished: Yes
Enclosed: Yes
Contiguous:
Yes
Permitted: Yes
Wet Space: No
Addition: No
Conversion: No

4 Floor 1 - Bedroom



Dimensions: 10'0" x 12'4"
Area: 101 sq. ft
Counted as Living Area:
Yes

Heated: Yes
Finished: Yes
Enclosed: Yes
Contiguous:
Yes
Permitted: Yes
Wet Space: No
Addition: No
Conversion: No

5 Floor 1 - Bath

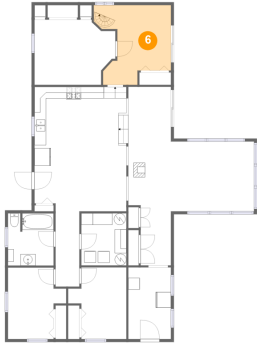


Dimensions: 7'10" x 9'0"
Area: 69 sq. ft
Counted as Living Area:
Yes

Heated: Yes
Finished: Yes
Enclosed: Yes
Contiguous:
Yes
Permitted: Yes
Wet Space: Yes
Addition: No
Conversion: No

10293 Connecticut Ave, Wolcott, New York, United States

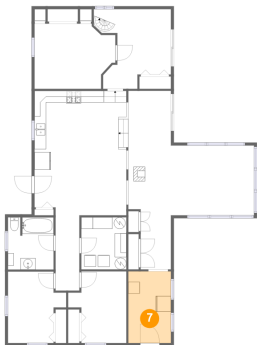
6 Floor 1 - Sitting Room



Dimensions: 13'3" x 13'8"
Area: 136 sq. ft
Counted as Living Area:
Yes

Heated: Yes
Finished: Yes
Enclosed: Yes
Contiguous:
Yes
Permitted: Yes
Wet Space: No
Addition: No
Conversion: No

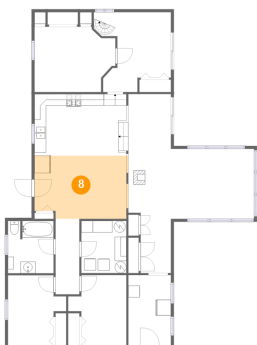
7 Floor 1 - Foyer



Dimensions: 7'4" x 12'4"
Area: 90 sq. ft
Counted as Living Area:
Yes

Heated: Yes
Finished: Yes
Enclosed: Yes
Contiguous:
Yes
Permitted: Yes
Wet Space: No
Addition: No
Conversion: No

8 Floor 1 - Dining Area

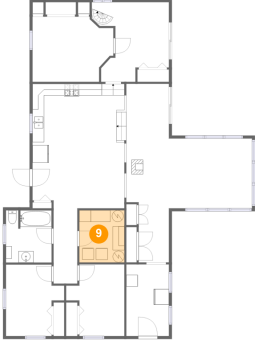


Dimensions: 15'9" x 10'10"
Area: 168 sq. ft
Counted as Living Area:
Yes

Heated: Yes
Finished: Yes
Enclosed: Yes
Contiguous:
Yes
Permitted: Yes
Wet Space: No
Addition: No
Conversion: No

10293 Connecticut Ave, Wolcott, New York, United States

9 Floor 1 - Laundry



Dimensions: 7'9" x 8'11"
Area: 69 sq. ft
Counted as Living Area:
Yes

Heated: Yes
Finished: Yes
Enclosed: Yes
Contiguous:
Yes
Permitted: Yes
Wet Space: No
Addition: No
Conversion: No

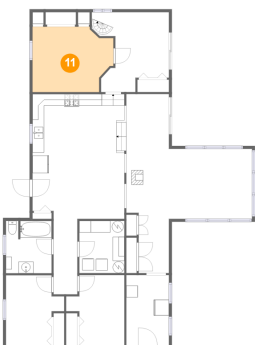
10 Floor 1 - Entry



Dimensions: 5'2" x 9'3"
Area: 48 sq. ft
Counted as Living Area:
Yes

Heated: Yes
Finished: Yes
Enclosed: Yes
Contiguous:
Yes
Permitted: Yes
Wet Space: No
Addition: No
Conversion: No

11 Floor 1 - Family Room

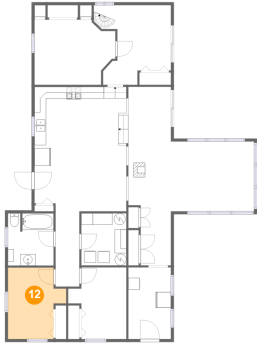


Dimensions: 13'11" x 11'2"
Area: 140 sq. ft
Counted as Living Area:
Yes

Heated: Yes
Finished: Yes
Enclosed: Yes
Contiguous:
Yes
Permitted: Yes
Wet Space: No
Addition: No
Conversion: No

10293 Connecticut Ave, Wolcott, New York, United States

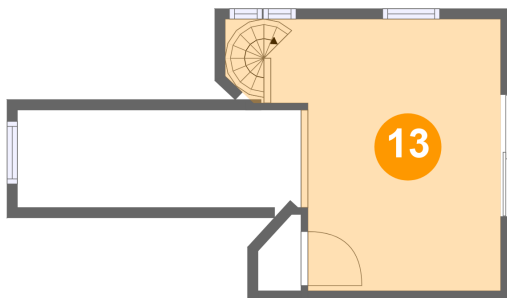
12 Floor 1 - Primary Bedroom



Dimensions: 10'0" x 12'3"
Area: 102 sq. ft
Counted as Living Area:
Yes

Heated: Yes
Finished: Yes
Enclosed: Yes
Contiguous:
Yes
Permitted: Yes
Wet Space: No
Addition: No
Conversion: No

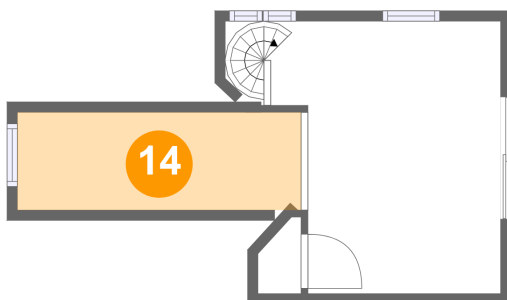
13 Floor 2 - Sitting Room



Dimensions: 11'3" x 13'3"
Area: 143 sq. ft
Counted as Living Area: No

Heated: Yes
Finished: Yes
Enclosed: Yes
Contiguous: No
Permitted: Yes
Wet Space: No
Addition: No
Conversion: No

14 Floor 2 - Open To Below



Dimensions: 13'10" x 4'9"
Area: 66 sq. ft
Counted as Living Area: No

Heated: No
Finished: No
Enclosed: No
Contiguous: Yes
Permitted: No
Wet Space: No
Addition: No
Conversion: No