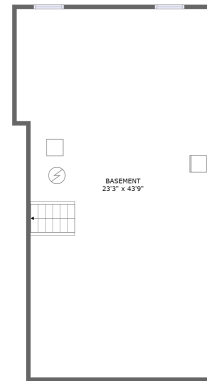
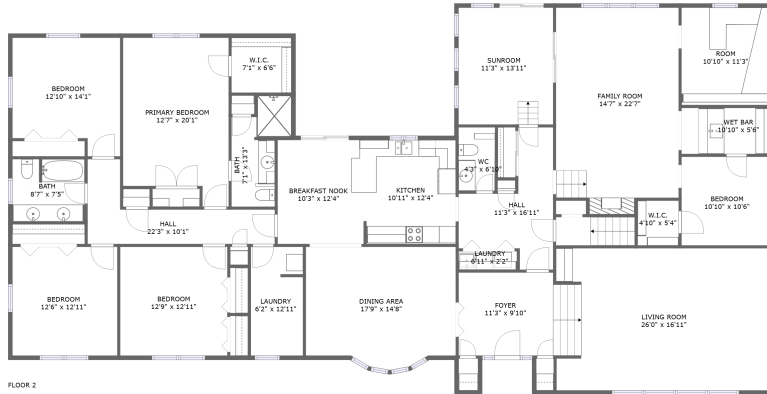


# 21W629 Thorndale Ave, Medinah, Illinois, United States




## Property Summary

 **0** garages

 **5** bedrooms

 **2** bathrooms

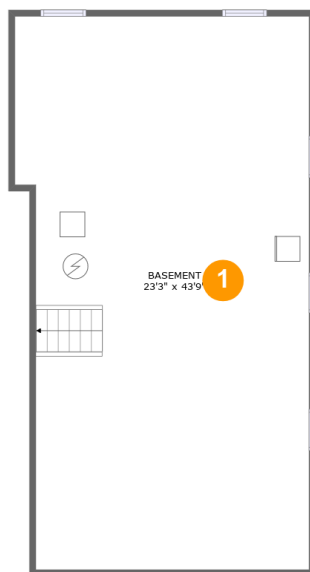
 **1** half baths

 **2** floors

 **3,512** Gross Living Area sqft

 **4,626** total sqft

# 21W629 Thorndale Ave, Medinah, Illinois, United States



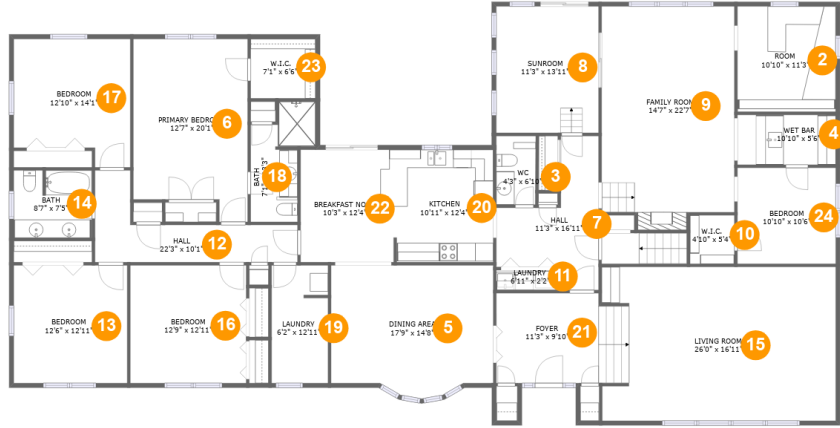
## Room Dimensions

Floor 1

Total sqft: 1037

Living area: 0

| # | Room name | Dimensions    | Area (sqft) | Counted as Living Area |
|---|-----------|---------------|-------------|------------------------|
| 1 | Basement  | 23'3" x 43'9" | 969 sq. ft  | No                     |

**21W629 Thorndale Ave, Medinah, Illinois, United States****Room Dimensions****Floor 2****Total sqft: 3589****Living area: 3512**

| #  | Room name       | Dimensions     | Area (sqft) | Counted as Living Area |
|----|-----------------|----------------|-------------|------------------------|
| 2  | Room            | 10'10" x 11'3" | 125 sq. ft  | Yes                    |
| 3  | Wc              | 4'3" x 6'10"   | 33 sq. ft   | Yes                    |
| 4  | Wet Bar         | 10'10" x 5'6"  | 59 sq. ft   | No                     |
| 5  | Dining Area     | 17'9" x 14'8"  | 240 sq. ft  | Yes                    |
| 6  | Primary Bedroom | 12'7" x 20'1"  | 229 sq. ft  | Yes                    |
| 7  | Hall            | 11'3" x 16'11" | 116 sq. ft  | Yes                    |
| 8  | Sunroom         | 11'3" x 13'11" | 156 sq. ft  | Yes                    |
| 9  | Family Room     | 14'7" x 22'7"  | 340 sq. ft  | Yes                    |
| 10 | W.i.c.          | 4'10" x 5'4"   | 26 sq. ft   | Yes                    |
| 11 | Laundry         | 6'11" x 2'2"   | 15 sq. ft   | No                     |
| 12 | Hall            | 22'3" x 10'1"  | 114 sq. ft  | Yes                    |

Scan captured on Mon, 03 Jun 2024 15:55:23 GMT

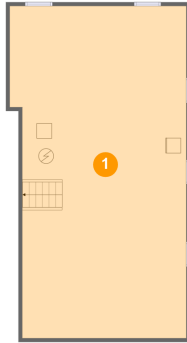
Information is calculated by CubiCasa technology; deemed highly reliable but not guaranteed.

**21W629 Thorndale Ave,Medinah,Illinois,United States**

| #  | Room name      | Dimensions     | Area (sqft) | Counted as Living Area |
|----|----------------|----------------|-------------|------------------------|
| 13 | Bedroom        | 12'6" x 12'11" | 161 sq. ft  | Yes                    |
| 14 | Bath           | 8'7" x 7'5"    | 63 sq. ft   | Yes                    |
| 15 | Living Room    | 26'0" x 16'11" | 435 sq. ft  | Yes                    |
| 16 | Bedroom        | 12'9" x 12'11" | 165 sq. ft  | Yes                    |
| 17 | Bedroom        | 12'10" x 14'1" | 161 sq. ft  | Yes                    |
| 18 | Bath           | 7'1" x 13'3"   | 69 sq. ft   | Yes                    |
| 19 | Laundry        | 6'2" x 12'11"  | 79 sq. ft   | Yes                    |
| 20 | Kitchen        | 10'11" x 12'4" | 134 sq. ft  | Yes                    |
| 21 | Foyer          | 11'3" x 9'10"  | 111 sq. ft  | Yes                    |
| 22 | Breakfast Nook | 10'3" x 12'4"  | 126 sq. ft  | Yes                    |
| 23 | W.i.c.         | 7'1" x 6'6"    | 46 sq. ft   | Yes                    |
| 24 | Bedroom        | 10'10" x 10'6" | 114 sq. ft  | Yes                    |

# 21W629 Thorndale Ave, Medinah, Illinois, United States

## 1 Floor 1 - Basement



Dimensions: 23'3" x 43'9"  
Area: 969 sq. ft  
Counted as Living Area: No

Heated: No  
Finished: No  
Enclosed: Yes  
Contiguous: Yes  
Permitted: Yes  
Wet Space: No  
Addition: No  
Conversion: No

## 2 Floor 2 - Room



Dimensions: 10'10" x 11'3"  
Area: 125 sq. ft  
Counted as Living Area: Yes

Heated: Yes  
Finished: Yes  
Enclosed: Yes  
Contiguous: Yes  
Permitted: Yes  
Wet Space: No  
Addition: No  
Conversion: No

# 21W629 Thorndale Ave, Medinah, Illinois, United States

## 3 Floor 2 - Wc



Dimensions: 4'3" x 6'10"  
Area: 33 sq. ft  
Counted as Living Area:  
Yes

Heated: Yes  
Finished: Yes  
Enclosed: Yes  
Contiguous:  
Yes  
Permitted: Yes  
Wet Space: Yes  
Addition: No  
Conversion: No

## 4 Floor 2 - Wet Bar



Dimensions: 10'10" x 5'6"  
Area: 59 sq. ft  
Counted as Living Area: No

Heated: Yes  
Finished: Yes  
Enclosed: Yes  
Contiguous: Yes  
Permitted: Yes  
Wet Space: No  
Addition: No  
Conversion: No

## 5 Floor 2 - Dining Area



Dimensions: 17'9" x 14'8"  
Area: 240 sq. ft  
Counted as Living Area:  
Yes

Heated: Yes  
Finished: Yes  
Enclosed: Yes  
Contiguous:  
Yes  
Permitted: Yes  
Wet Space: No  
Addition: No  
Conversion: No

# 21W629 Thorndale Ave, Medinah, Illinois, United States

## 6 Floor 2 - Primary Bedroom



Dimensions: 12'7" x 20'1"  
Area: 229 sq. ft  
Counted as Living Area:  
Yes

Heated: Yes  
Finished: Yes  
Enclosed: Yes  
Contiguous:  
Yes  
Permitted: Yes  
Wet Space: No  
Addition: No  
Conversion: No

## 7 Floor 2 - Hall



Dimensions: 11'3" x 16'11"  
Area: 116 sq. ft  
Counted as Living Area:  
Yes

Heated: Yes  
Finished: Yes  
Enclosed: Yes  
Contiguous:  
Yes  
Permitted: Yes  
Wet Space: No  
Addition: No  
Conversion: No

## 8 Floor 2 - Sunroom



Dimensions: 11'3" x 13'11"  
Area: 156 sq. ft  
Counted as Living Area:  
Yes

Heated: Yes  
Finished: Yes  
Enclosed: Yes  
Contiguous:  
Yes  
Permitted: Yes  
Wet Space: No  
Addition: No  
Conversion: No

# 21W629 Thorndale Ave, Medinah, Illinois, United States

## 9 Floor 2 - Family Room



Dimensions: 14'7" x 22'7"  
Area: 340 sq. ft  
Counted as Living Area:  
Yes

Heated: Yes  
Finished: Yes  
Enclosed: Yes  
Contiguous:  
Yes  
Permitted: Yes  
Wet Space: No  
Addition: No  
Conversion: No

## 10 Floor 2 - W.i.c.



Dimensions: 4'10" x 5'4"  
Area: 26 sq. ft  
Counted as Living Area:  
Yes

Heated: Yes  
Finished: Yes  
Enclosed: Yes  
Contiguous:  
Yes  
Permitted: Yes  
Wet Space: No  
Addition: No  
Conversion: No

## 11 Floor 2 - Laundry



Dimensions: 6'11" x 2'2"  
Area: 15 sq. ft  
Counted as Living Area: No

Heated: Yes  
Finished: Yes  
Enclosed: Yes  
Contiguous: Yes  
Permitted: Yes  
Wet Space: No  
Addition: No  
Conversion: No



# 21W629 Thorndale Ave, Medinah, Illinois, United States

## 12 Floor 2 - Hall



Dimensions: 22'3" x 10'1"  
Area: 114 sq. ft  
Counted as Living Area:  
Yes

Heated: Yes  
Finished: Yes  
Enclosed: Yes  
Contiguous:  
Yes  
Permitted: Yes  
Wet Space: No  
Addition: No  
Conversion: No

## 13 Floor 2 - Bedroom



Dimensions: 12'6" x 12'11"  
Area: 161 sq. ft  
Counted as Living Area:  
Yes

Heated: Yes  
Finished: Yes  
Enclosed: Yes  
Contiguous:  
Yes  
Permitted: Yes  
Wet Space: No  
Addition: No  
Conversion: No

## 14 Floor 2 - Bath



Dimensions: 8'7" x 7'5"  
Area: 63 sq. ft  
Counted as Living Area:  
Yes

Heated: Yes  
Finished: Yes  
Enclosed: Yes  
Contiguous:  
Yes  
Permitted: Yes  
Wet Space: Yes  
Addition: No  
Conversion: No

# 21W629 Thorndale Ave, Medinah, Illinois, United States

## 15 Floor 2 - Living Room



Dimensions: 26'0" x 16'11"  
Area: 435 sq. ft  
Counted as Living Area:  
Yes

Heated: Yes  
Finished: Yes  
Enclosed: Yes  
Contiguous:  
Yes  
Permitted: Yes  
Wet Space: No  
Addition: No  
Conversion: No

## 16 Floor 2 - Bedroom



Dimensions: 12'9" x 12'11"  
Area: 165 sq. ft  
Counted as Living Area:  
Yes

Heated: Yes  
Finished: Yes  
Enclosed: Yes  
Contiguous:  
Yes  
Permitted: Yes  
Wet Space: No  
Addition: No  
Conversion: No

## 17 Floor 2 - Bedroom



Dimensions: 12'10" x 14'1"  
Area: 161 sq. ft  
Counted as Living Area:  
Yes

Heated: Yes  
Finished: Yes  
Enclosed: Yes  
Contiguous:  
Yes  
Permitted: Yes  
Wet Space: No  
Addition: No  
Conversion: No

# 21W629 Thorndale Ave, Medinah, Illinois, United States

## 18 Floor 2 - Bath



Dimensions: 7'1" x 13'3"  
Area: 69 sq. ft  
Counted as Living Area:  
Yes

Heated: Yes  
Finished: Yes  
Enclosed: Yes  
Contiguous:  
Yes  
Permitted: Yes  
Wet Space: Yes  
Addition: No  
Conversion: No

## 19 Floor 2 - Laundry



Dimensions: 6'2" x 12'11"  
Area: 79 sq. ft  
Counted as Living Area:  
Yes

Heated: Yes  
Finished: Yes  
Enclosed: Yes  
Contiguous:  
Yes  
Permitted: Yes  
Wet Space: No  
Addition: No  
Conversion: No

## 20 Floor 2 - Kitchen



Dimensions: 10'11" x 12'4"  
Area: 134 sq. ft  
Counted as Living Area:  
Yes

Heated: Yes  
Finished: Yes  
Enclosed: Yes  
Contiguous:  
Yes  
Permitted: Yes  
Wet Space: No  
Addition: No  
Conversion: No

# 21W629 Thorndale Ave, Medinah, Illinois, United States

## 21 Floor 2 - Foyer



Dimensions: 11'3" x 9'10"  
Area: 111 sq. ft  
Counted as Living Area:  
Yes

Heated: Yes  
Finished: Yes  
Enclosed: Yes  
Contiguous:  
Yes  
Permitted: Yes  
Wet Space: No  
Addition: No  
Conversion: No

## 22 Floor 2 - Breakfast Nook



Dimensions: 10'3" x 12'4"  
Area: 126 sq. ft  
Counted as Living Area:  
Yes

Heated: Yes  
Finished: Yes  
Enclosed: Yes  
Contiguous:  
Yes  
Permitted: Yes  
Wet Space: No  
Addition: No  
Conversion: No

## 23 Floor 2 - W.i.c.



Dimensions: 7'1" x 6'6"  
Area: 46 sq. ft  
Counted as Living Area:  
Yes

Heated: Yes  
Finished: Yes  
Enclosed: Yes  
Contiguous:  
Yes  
Permitted: Yes  
Wet Space: No  
Addition: No  
Conversion: No

# 21W629 Thorndale Ave, Medinah, Illinois, United States

## 24 Floor 2 - Bedroom



**Dimensions:** 10'10" x 10'6"  
**Area:** 114 sq. ft  
**Counted as Living Area:**  
Yes

**Heated:** Yes  
**Finished:** Yes  
**Enclosed:** Yes  
**Contiguous:**  
Yes  
**Permitted:** Yes  
**Wet Space:** No  
**Addition:** No  
**Conversion:** No