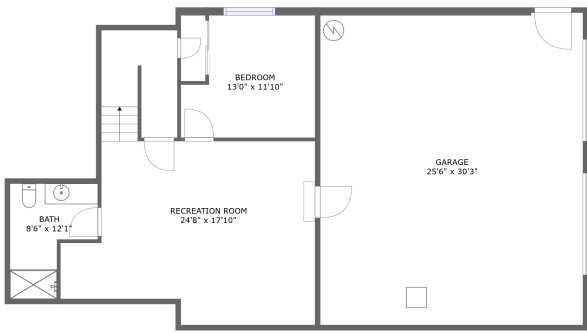
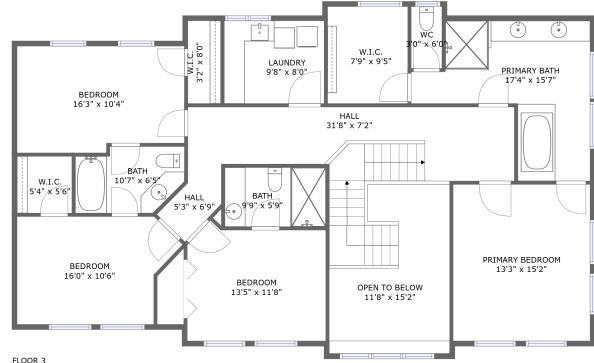
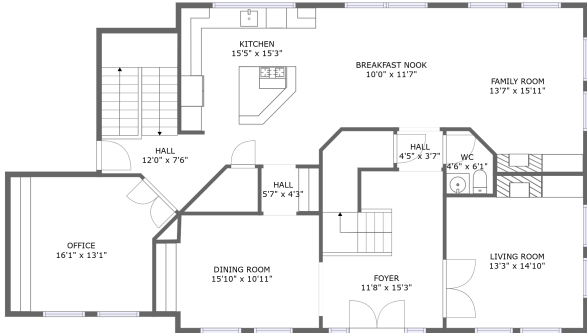



2508 Southeast Stephens Street, Hosford-Abernethy, Portland, Multnomah County, Oregon, United States,



Property summary

 **1** Garages

 **5** Bedrooms

 **4** Bathrooms

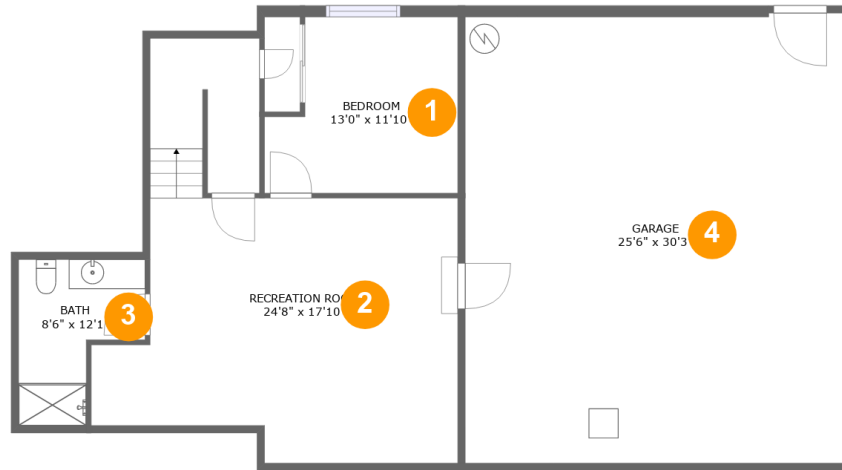
 **1** Half baths

 **3** Floors

 **4,007** Gross living area sqft

 **4,975** Total sqft

2508 Southeast Stephens Street, Hosford-Abernethy, Portland, Multnomah County, Oregon, United States,



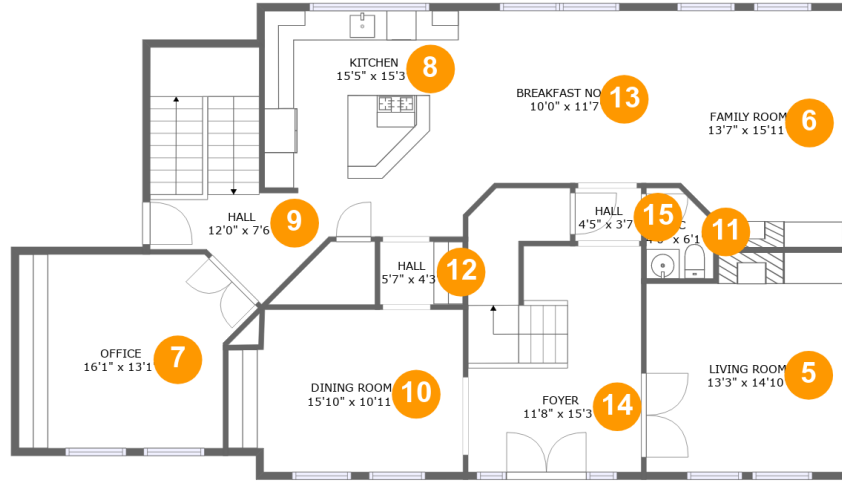
Room dimensions

Floor 1

Total sqft: 1572 Living area: 758

#		Dimensions	sqft	Counted as living area
1	Bedroom	13'0" x 11'10"	136 sq. ft	Yes
2	Recreation Room	24'8" x 17'10"	448 sq. ft	Yes
3	Bath	8'6" x 12'1"	77 sq. ft	Yes
4	Garage	25'6" x 30'3"	767 sq. ft	No

2508 Southeast Stephens Street, Hosford-Abernethy, Portland, Multnomah County, Oregon, United States,



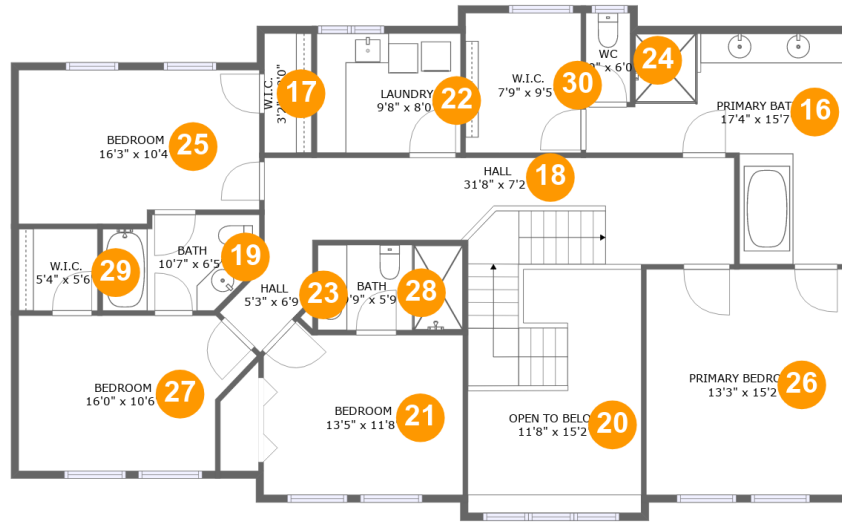
Room dimensions

Floor 2

Total sqft: 1624 Living area: 1624

#		Dimensions	sqft	Counted as living area
5	Living Room	13'3" x 14'10"	186 sq. ft	Yes
6	Family Room	13'7" x 15'11"	198 sq. ft	Yes
7	Office	16'1" x 13'1"	185 sq. ft	Yes
8	Kitchen	15'5" x 15'3"	219 sq. ft	Yes
9	Hall	12'0" x 7'6"	128 sq. ft	Yes
10	Dining Room	15'10" x 10'11"	163 sq. ft	Yes
11	WC	4'6" x 6'1"	25 sq. ft	Yes
12	Hall	5'7" x 4'3"	24 sq. ft	Yes
13	Breakfast Nook	10'0" x 11'7"	116 sq. ft	Yes
14	Foyer	11'8" x 15'3"	200 sq. ft	Yes
15	Hall	4'5" x 3'7"	16 sq. ft	Yes

2508 Southeast Stephens Street, Hosford-Abernethy, Portland, Multnomah County, Oregon, United States,



Room dimensions

Floor 3

Total sqft: 1779 Living area: 1625

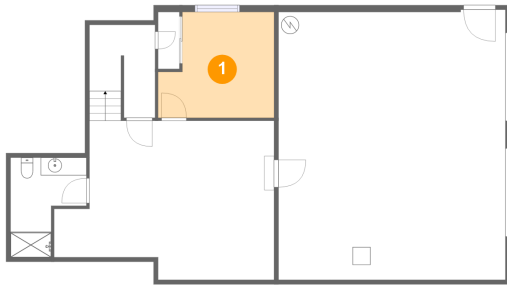
#		Dimensions	sqft	Counted as living area
16	Primary Bath	17'4" x 15'7"	176 sq. ft	Yes
17	W.I.C.	3'2" x 8'0"	26 sq. ft	Yes
18	Hall	31'8" x 7'2"	253 sq. ft	Yes
19	Bath	10'7" x 6'5"	60 sq. ft	Yes
20	Open To Below	11'8" x 15'2"	148 sq. ft	No
21	Bedroom	13'5" x 11'8"	145 sq. ft	Yes
22	Laundry	9'8" x 8'0"	78 sq. ft	Yes
23	Hall	5'3" x 6'9"	27 sq. ft	Yes
24	WC	3'0" x 6'0"	18 sq. ft	Yes
25	Bedroom	16'3" x 10'4"	161 sq. ft	Yes
26	Primary Bedroom	13'3" x 15'2"	202 sq. ft	Yes

**2508 Southeast Stephens Street, Hosford-Abernethy,
Portland, Multnomah County, Oregon, United States,**

#		Dimensions	sqft	Counted as living area
27	Bedroom	16'0" x 10'6"	147 sq. ft	Yes
28	Bath	9'9" x 5'9"	56 sq. ft	Yes
29	W.I.C.	5'4" x 5'6"	29 sq. ft	Yes
30	W.I.C.	7'9" x 9'5"	73 sq. ft	Yes

2508 Southeast Stephens Street, Hosford-Abernethy, Portland, Multnomah County, Oregon, United States,

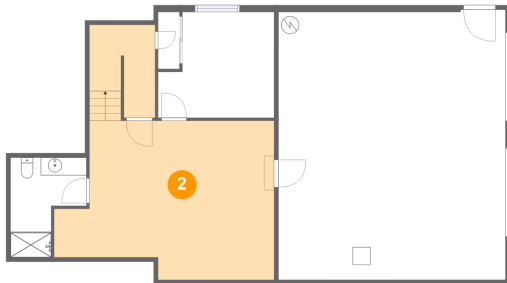
1 Floor 1 - Bedroom



Dimensions: 13'0" x 11'10"
Area: 136 sq. ft
Counted as living area: Yes

Heated: Yes
Finished: Yes
Enclosed: Yes
Contiguous: Yes
Permitted: Yes
Wet space: No
Addition: No
Conversion: No

2 Floor 1 - Recreation Room

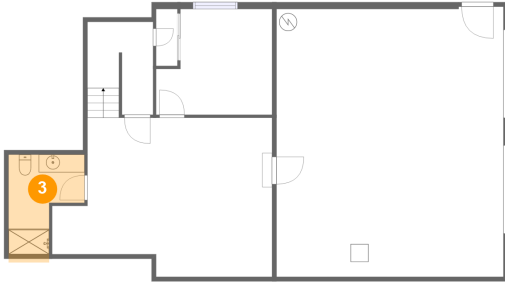


Dimensions: 24'8" x 17'10"
Area: 448 sq. ft
Counted as living area: Yes

Heated: Yes
Finished: Yes
Enclosed: Yes
Contiguous: Yes
Permitted: Yes
Wet space: No
Addition: No
Conversion: No

2508 Southeast Stephens Street, Hosford-Abernethy, Portland, Multnomah County, Oregon, United States,

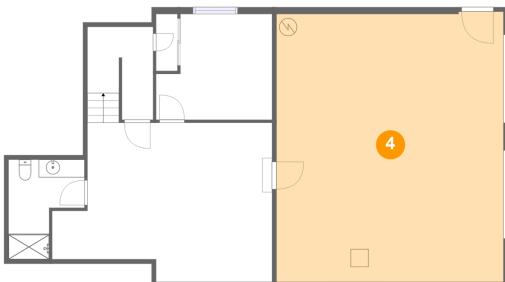
3 Floor 1 - Bath



Dimensions: 8'6" x 12'1"
Area: 77 sq. ft
Counted as living area: Yes

Heated: Yes
Finished: Yes
Enclosed: Yes
Contiguous: Yes
Permitted: Yes
Wet space: Yes
Addition: No
Conversion: No

4 Floor 1 - Garage



Dimensions: 25'6" x 30'3"
Area: 767 sq. ft
Counted as living area: No

Heated: No
Finished: No
Enclosed: Yes
Contiguous: Yes
Permitted: Yes
Wet space: No
Addition: No
Conversion: No

5 Floor 2 - Living Room



Dimensions: 13'3" x 14'10"
Area: 186 sq. ft
Counted as living area: Yes

Heated: Yes
Finished: Yes
Enclosed: Yes
Contiguous: Yes
Permitted: Yes
Wet space: No
Addition: No
Conversion: No

2508 Southeast Stephens Street, Hosford-Abernethy, Portland, Multnomah County, Oregon, United States,

6 Floor 2 - Family Room



Dimensions: 13'7" x 15'11"
Area: 198 sq. ft
Counted as living area: Yes

Heated: Yes
Finished: Yes
Enclosed: Yes
Contiguous: Yes
Permitted: Yes
Wet space: No
Addition: No
Conversion: No

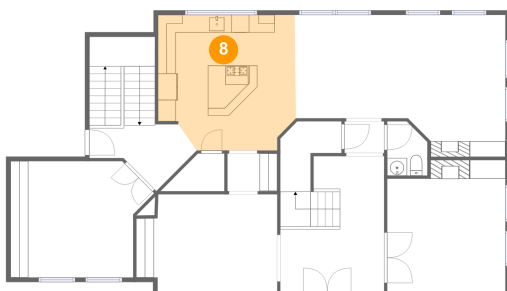
7 Floor 2 - Office



Dimensions: 16'1" x 13'1"
Area: 185 sq. ft
Counted as living area: Yes

Heated: Yes
Finished: Yes
Enclosed: Yes
Contiguous: Yes
Permitted: Yes
Wet space: No
Addition: No
Conversion: No

8 Floor 2 - Kitchen

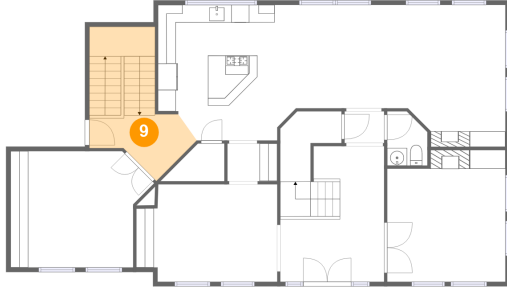


Dimensions: 15'5" x 15'3"
Area: 219 sq. ft
Counted as living area: Yes

Heated: Yes
Finished: Yes
Enclosed: Yes
Contiguous: Yes
Permitted: Yes
Wet space: No
Addition: No
Conversion: No

2508 Southeast Stephens Street, Hosford-Abernethy, Portland, Multnomah County, Oregon, United States,

9 Floor 2 - Hall



Dimensions: 12'0" x 7'6"
Area: 128 sq. ft
Counted as living area: Yes

Heated: Yes
Finished: Yes
Enclosed: Yes
Contiguous: Yes
Permitted: Yes
Wet space: No
Addition: No
Conversion: No

10 Floor 2 - Dining Room



Dimensions: 15'10" x 10'11"
Area: 163 sq. ft
Counted as living area: Yes

Heated: Yes
Finished: Yes
Enclosed: Yes
Contiguous: Yes
Permitted: Yes
Wet space: No
Addition: No
Conversion: No

11 Floor 2 - WC



Dimensions: 4'6" x 6'1"
Area: 25 sq. ft
Counted as living area: Yes

Heated: Yes
Finished: Yes
Enclosed: Yes
Contiguous: Yes
Permitted: Yes
Wet space: Yes
Addition: No
Conversion: No

**2508 Southeast Stephens Street, Hosford-Abernethy,
Portland, Multnomah County, Oregon, United States,**

12 Floor 2 - Hall



Dimensions: 5'7" x 4'3"
Area: 24 sq. ft
Counted as living area: Yes

Heated: Yes
Finished: Yes
Enclosed: Yes
Contiguous: Yes
Permitted: Yes
Wet space: No
Addition: No
Conversion: No

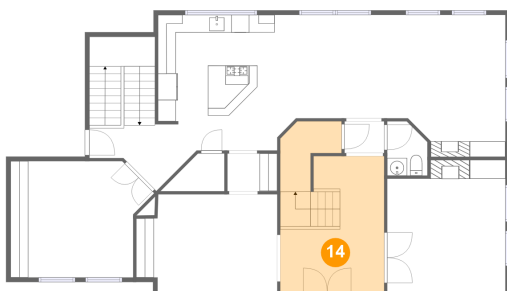
13 Floor 2 - Breakfast Nook



Dimensions: 10'0" x 11'7"
Area: 116 sq. ft
Counted as living area: Yes

Heated: Yes
Finished: Yes
Enclosed: Yes
Contiguous: Yes
Permitted: Yes
Wet space: No
Addition: No
Conversion: No

14 Floor 2 - Foyer



Dimensions: 11'8" x 15'3"
Area: 200 sq. ft
Counted as living area: Yes

Heated: Yes
Finished: Yes
Enclosed: Yes
Contiguous: Yes
Permitted: Yes
Wet space: No
Addition: No
Conversion: No

2508 Southeast Stephens Street, Hosford-Abernethy, Portland, Multnomah County, Oregon, United States,

15 Floor 2 - Hall



Dimensions: 4'5" x 3'7"
Area: 16 sq. ft
Counted as living area: Yes

Heated: Yes
Finished: Yes
Enclosed: Yes
Contiguous: Yes
Permitted: Yes
Wet space: No
Addition: No
Conversion: No

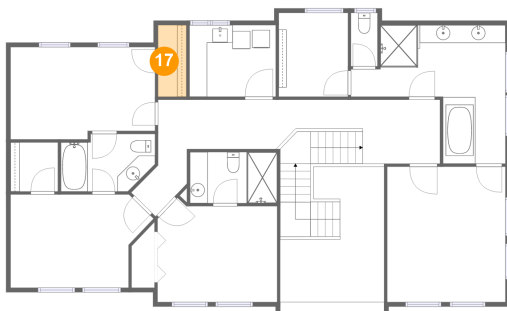
16 Floor 3 - Primary Bath



Dimensions: 17'4" x 15'7"
Area: 176 sq. ft
Counted as living area: Yes

Heated: Yes
Finished: Yes
Enclosed: Yes
Contiguous: Yes
Permitted: Yes
Wet space: Yes
Addition: No
Conversion: No

17 Floor 3 - W.I.C.

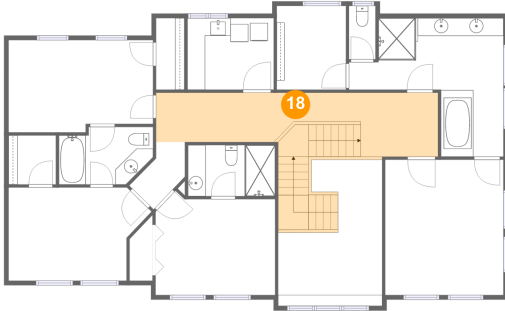


Dimensions: 3'2" x 8'0"
Area: 26 sq. ft
Counted as living area: Yes

Heated: Yes
Finished: Yes
Enclosed: Yes
Contiguous: Yes
Permitted: Yes
Wet space: No
Addition: No
Conversion: No

2508 Southeast Stephens Street, Hosford-Abernethy, Portland, Multnomah County, Oregon, United States,

18 Floor 3 - Hall



Dimensions: 31'8" x 7'2"
Area: 253 sq. ft
Counted as living area: Yes

Heated: Yes
Finished: Yes
Enclosed: Yes
Contiguous: Yes
Permitted: Yes
Wet space: No
Addition: No
Conversion: No

19 Floor 3 - Bath



Dimensions: 10'7" x 6'5"
Area: 60 sq. ft
Counted as living area: Yes

Heated: Yes
Finished: Yes
Enclosed: Yes
Contiguous: Yes
Permitted: Yes
Wet space: Yes
Addition: No
Conversion: No

20 Floor 3 - Open To Below



Dimensions: 11'8" x 15'2"
Area: 148 sq. ft
Counted as living area: No

Heated: No
Finished: No
Enclosed: No
Contiguous: Yes
Permitted: No
Wet space: No
Addition: No
Conversion: No

2508 Southeast Stephens Street, Hosford-Abernethy, Portland, Multnomah County, Oregon, United States,

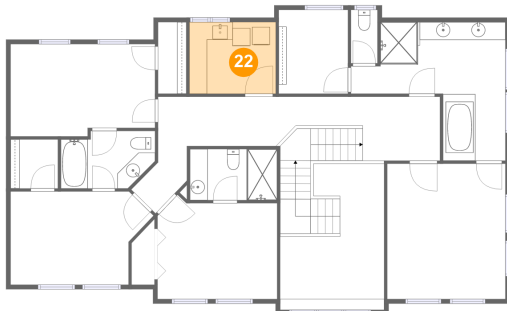
21 Floor 3 - Bedroom



Dimensions: 13'5" x 11'8"
Area: 145 sq. ft
Counted as living area: Yes

Heated: Yes
Finished: Yes
Enclosed: Yes
Contiguous: Yes
Permitted: Yes
Wet space: No
Addition: No
Conversion: No

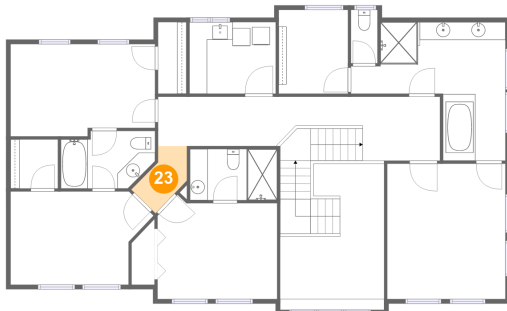
22 Floor 3 - Laundry



Dimensions: 9'8" x 8'0"
Area: 78 sq. ft
Counted as living area: Yes

Heated: Yes
Finished: Yes
Enclosed: Yes
Contiguous: Yes
Permitted: Yes
Wet space: No
Addition: No
Conversion: No

23 Floor 3 - Hall



Dimensions: 5'3" x 6'9"
Area: 27 sq. ft
Counted as living area: Yes

Heated: Yes
Finished: Yes
Enclosed: Yes
Contiguous: Yes
Permitted: Yes
Wet space: No
Addition: No
Conversion: No

2508 Southeast Stephens Street, Hosford-Abernethy, Portland, Multnomah County, Oregon, United States,

24 Floor 3 - WC



Dimensions: 3'0" x 6'0"
Area: 18 sq. ft
Counted as living area: Yes

Heated: Yes
Finished: Yes
Enclosed: Yes
Contiguous: Yes
Permitted: Yes
Wet space: Yes
Addition: No
Conversion: No

25 Floor 3 - Bedroom



Dimensions: 16'3" x 10'4"
Area: 161 sq. ft
Counted as living area: Yes

Heated: Yes
Finished: Yes
Enclosed: Yes
Contiguous: Yes
Permitted: Yes
Wet space: No
Addition: No
Conversion: No

26 Floor 3 - Primary Bedroom

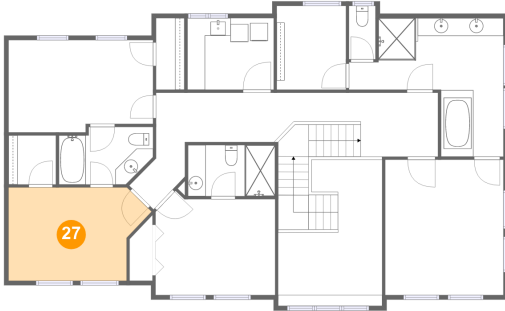


Dimensions: 13'3" x 15'2"
Area: 202 sq. ft
Counted as living area: Yes

Heated: Yes
Finished: Yes
Enclosed: Yes
Contiguous: Yes
Permitted: Yes
Wet space: No
Addition: No
Conversion: No

2508 Southeast Stephens Street, Hosford-Abernethy, Portland, Multnomah County, Oregon, United States,

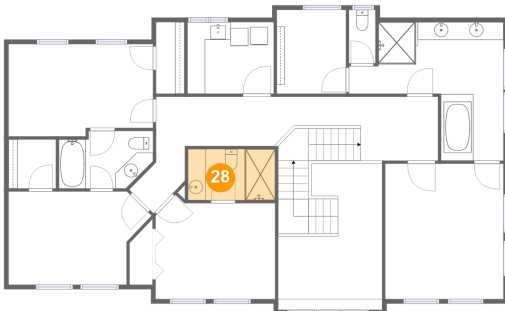
27 Floor 3 - Bedroom



Dimensions: 16'0" x 10'6"
Area: 147 sq. ft
Counted as living area: Yes

Heated: Yes
Finished: Yes
Enclosed: Yes
Contiguous: Yes
Permitted: Yes
Wet space: No
Addition: No
Conversion: No

28 Floor 3 - Bath



Dimensions: 9'9" x 5'9"
Area: 56 sq. ft
Counted as living area: Yes

Heated: Yes
Finished: Yes
Enclosed: Yes
Contiguous: Yes
Permitted: Yes
Wet space: Yes
Addition: No
Conversion: No

29 Floor 3 - W.I.C.

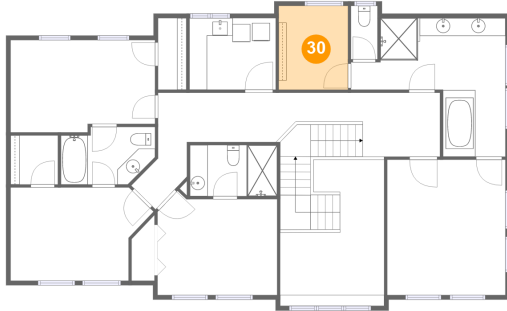


Dimensions: 5'4" x 5'6"
Area: 29 sq. ft
Counted as living area: Yes

Heated: Yes
Finished: Yes
Enclosed: Yes
Contiguous: Yes
Permitted: Yes
Wet space: No
Addition: No
Conversion: No

**2508 Southeast Stephens Street, Hosford-Abernethy,
Portland, Multnomah County, Oregon, United States,**

30 Floor 3 - W.I.C.



Dimensions: 7'9" x 9'5"
Area: 73 sq. ft
Counted as living area: Yes

Heated: Yes
Finished: Yes
Enclosed: Yes
Contiguous: Yes
Permitted: Yes
Wet space: No
Addition: No
Conversion: No