


7501 Cumberland Road, Bardmoor North, Bardmoor, Seminole, Pinellas County, Florida, United States,



Property summary

 **1** Garages

 **2** Bedrooms

 **2** Bathrooms

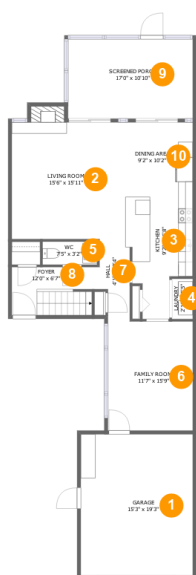
 **1** Half baths

 **2** Floors

 **1,570**
Gross living
area sqft

 **2,102**
Total sqft

7501 Cumberland Road, Bardmoor North, Bardmoor, Seminole, Pinellas County, Florida, United States,



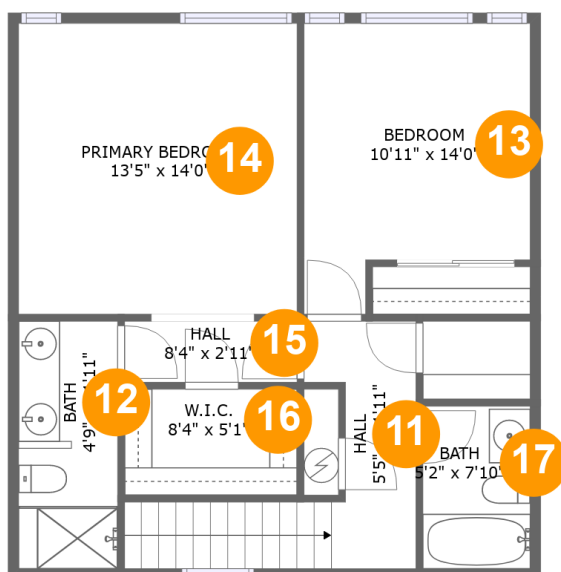
Room dimensions

Floor 1

Total sqft: 1414 Living area: 882

#		Dimensions	sqft	Counted as living area
1	Garage	15'3" x 19'3"	294 sq. ft	No
2	Living Room	15'6" x 15'11"	258 sq. ft	Yes
3	Kitchen	9'2" x 16'8"	121 sq. ft	Yes
4	Laundry	2'10" x 5'5"	18 sq. ft	Yes
5	WC	7'5" x 3'2"	23 sq. ft	Yes
6	Family Room	11'7" x 15'9"	175 sq. ft	Yes
7	Hall	4'1" x 10'4"	39 sq. ft	Yes
8	Foyer	12'0" x 6'7"	74 sq. ft	Yes
9	Screened Porch	17'0" x 10'10"	185 sq. ft	No
10	Dining Area	9'2" x 10'2"	93 sq. ft	Yes

7501 Cumberland Road, Bardmoor North, Bardmoor, Seminole, Pinellas County, Florida, United States,



Room dimensions

Floor 2

Total sqft: 688 Living area: 688

#		Dimensions	sqft	Counted as living area
11	Hall	5'5" x 11'11"	81 sq. ft	Yes
12	Bath	4'9" x 11'11"	57 sq. ft	Yes
13	Bedroom	10'11" x 14'0"	132 sq. ft	Yes
14	Primary Bedroom	13'5" x 14'0"	189 sq. ft	Yes
15	Hall	8'4" x 2'11"	25 sq. ft	Yes
16	W.I.C.	8'4" x 5'1"	43 sq. ft	Yes
17	Bath	5'2" x 7'10"	41 sq. ft	Yes

**7501 Cumberland Road, Bardmoor North, Bardmoor,
Seminole, Pinellas County, Florida, United States,**

1 Floor 1 - Garage



Dimensions: 15'3" x 19'3"
Area: 294 sq. ft
Counted as living area: No

Heated: No
Finished: No
Enclosed: Yes
Contiguous: Yes
Permitted: Yes
Wet space: No
Addition: No
Conversion: No

2 Floor 1 - Living Room



Dimensions: 15'6" x 15'11"
Area: 258 sq. ft
Counted as living area: Yes

Heated: Yes
Finished: Yes
Enclosed: Yes
Contiguous: Yes
Permitted: Yes
Wet space: No
Addition: No
Conversion: No

7501 Cumberland Road, Bardmoor North, Bardmoor,
Seminole, Pinellas County, Florida, United States,

3 Floor 1 - Kitchen



Dimensions: 9'2" x 16'8"
Area: 121 sq. ft
Counted as living area: Yes

Heated: Yes
Finished: Yes
Enclosed: Yes
Contiguous: Yes
Permitted: Yes
Wet space: No
Addition: No
Conversion: No

4 Floor 1 - Laundry



Dimensions: 2'10" x 5'5"
Area: 18 sq. ft
Counted as living area: Yes

Heated: Yes
Finished: Yes
Enclosed: Yes
Contiguous: Yes
Permitted: Yes
Wet space: No
Addition: No
Conversion: No

5 Floor 1 - WC



Dimensions: 7'5" x 3'2"
Area: 23 sq. ft
Counted as living area: Yes

Heated: Yes
Finished: Yes
Enclosed: Yes
Contiguous: Yes
Permitted: Yes
Wet space: Yes
Addition: No
Conversion: No

7501 Cumberland Road, Bardmoor North, Bardmoor,
Seminole, Pinellas County, Florida, United States,

6 Floor 1 - Family Room



Dimensions: 11'7" x 15'9"
Area: 175 sq. ft
Counted as living area: Yes

Heated: Yes
Finished: Yes
Enclosed: Yes
Contiguous: Yes
Permitted: Yes
Wet space: No
Addition: No
Conversion: No

7 Floor 1 - Hall



Dimensions: 4'1" x 10'4"
Area: 39 sq. ft
Counted as living area: Yes

Heated: Yes
Finished: Yes
Enclosed: Yes
Contiguous: Yes
Permitted: Yes
Wet space: No
Addition: No
Conversion: No

8 Floor 1 - Foyer



Dimensions: 12'0" x 6'7"
Area: 74 sq. ft
Counted as living area: Yes

Heated: Yes
Finished: Yes
Enclosed: Yes
Contiguous: Yes
Permitted: Yes
Wet space: No
Addition: No
Conversion: No

7501 Cumberland Road, Bardmoor North, Bardmoor,
Seminole, Pinellas County, Florida, United States,

9 Floor 1 - Screened Porch



Dimensions: 17'0" x 10'10"
Area: 185 sq. ft
Counted as living area: No

Heated: No
Finished: Yes
Enclosed: No
Contiguous: Yes
Permitted: Yes
Wet space: No
Addition: No
Conversion: No

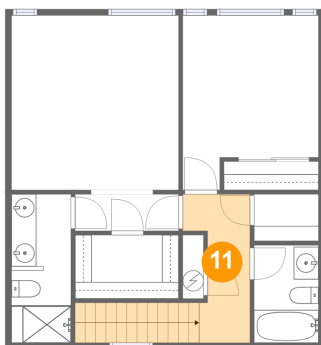
10 Floor 1 - Dining Area



Dimensions: 9'2" x 10'2"
Area: 93 sq. ft
Counted as living area: Yes

Heated: Yes
Finished: Yes
Enclosed: Yes
Contiguous: Yes
Permitted: Yes
Wet space: No
Addition: No
Conversion: No

11 Floor 2 - Hall

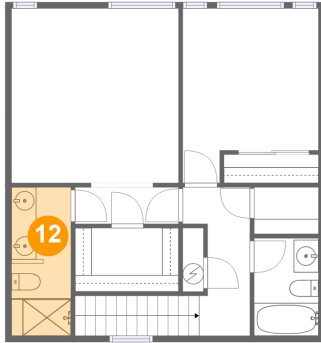


Dimensions: 5'5" x 11'11"
Area: 81 sq. ft
Counted as living area: Yes

Heated: Yes
Finished: Yes
Enclosed: Yes
Contiguous: Yes
Permitted: Yes
Wet space: No
Addition: No
Conversion: No

7501 Cumberland Road, Bardmoor North, Bardmoor,
Seminole, Pinellas County, Florida, United States,

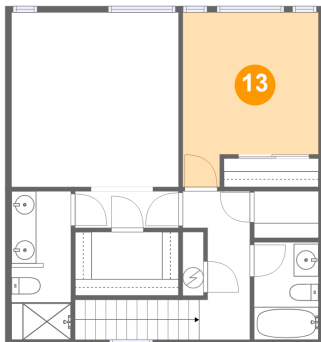
12 Floor 2 - Bath



Dimensions: 4'9" x 11'11"
Area: 57 sq. ft
Counted as living area: Yes

Heated: Yes
Finished: Yes
Enclosed: Yes
Contiguous: Yes
Permitted: Yes
Wet space: Yes
Addition: No
Conversion: No

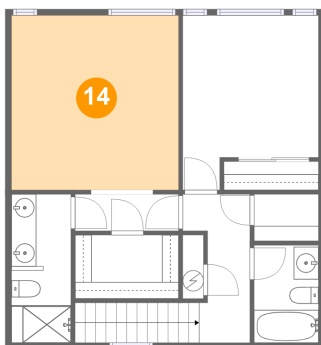
13 Floor 2 - Bedroom



Dimensions: 10'11" x 14'0"
Area: 132 sq. ft
Counted as living area: Yes

Heated: Yes
Finished: Yes
Enclosed: Yes
Contiguous: Yes
Permitted: Yes
Wet space: No
Addition: No
Conversion: No

14 Floor 2 - Primary Bedroom

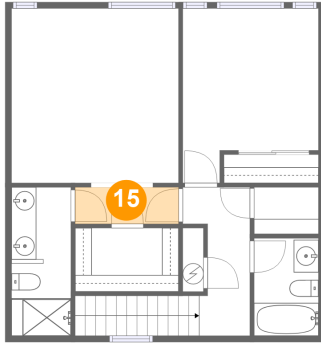


Dimensions: 13'5" x 14'0"
Area: 189 sq. ft
Counted as living area: Yes

Heated: Yes
Finished: Yes
Enclosed: Yes
Contiguous: Yes
Permitted: Yes
Wet space: No
Addition: No
Conversion: No

7501 Cumberland Road, Bardmoor North, Bardmoor,
Seminole, Pinellas County, Florida, United States,

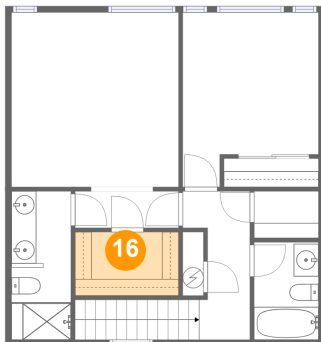
15 Floor 2 - Hall



Dimensions: 8'4" x 2'11"
Area: 25 sq. ft
Counted as living area: Yes

Heated: Yes
Finished: Yes
Enclosed: Yes
Contiguous: Yes
Permitted: Yes
Wet space: No
Addition: No
Conversion: No

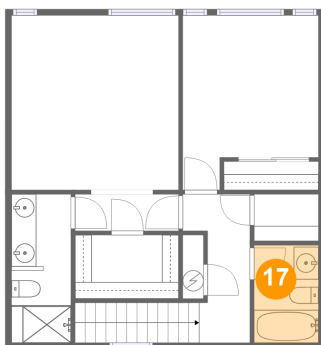
16 Floor 2 - W.I.C.



Dimensions: 8'4" x 5'1"
Area: 43 sq. ft
Counted as living area: Yes

Heated: Yes
Finished: Yes
Enclosed: Yes
Contiguous: Yes
Permitted: Yes
Wet space: No
Addition: No
Conversion: No

17 Floor 2 - Bath



Dimensions: 5'2" x 7'10"
Area: 41 sq. ft
Counted as living area: Yes

Heated: Yes
Finished: Yes
Enclosed: Yes
Contiguous: Yes
Permitted: Yes
Wet space: Yes
Addition: No
Conversion: No