

Home report

3384 Morning Dove Road, Roanoke, Virginia 24018, United States




Total Area: 1299 sq. ft

Below Ground: 644 sq. ft, Floor 2: 644 sq. ft, Floor 3: 655 sq. ft

Excluded: Covered deck 50 sq. ft, Back deck 95 sq. ft, Walls: 164 sq. ft

Property summary

 **3** Floors

 **3** Bedrooms

 **3** Bathrooms

 **1** Half baths

Home report

3384 Morning Dove Road, Roanoke, Virginia 24018, United States



Room dimensions

Floor 1 Below ground

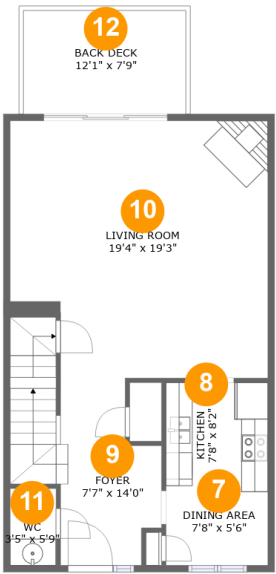
Total:644sqft

Excluded: 50sqft

#		Max Dimensions	sqft	Included
1	Covered Deck	8'4" x 5'11"	50 sq. ft	No
2	W.I.C.	5'0" x 7'5"	37 sq. ft	Yes
3	Bath	7'8" x 3'9"	29 sq. ft	Yes
4	Room	6'1" x 7'5"	45 sq. ft	Yes
5	Recreation Room	15'7" x 18'2"	293 sq. ft	Yes
6	Room	19'4" x 11'9"	208 sq. ft	Yes

Home report

3384 Morning Dove Road, Roanoke, Virginia 24018, United States



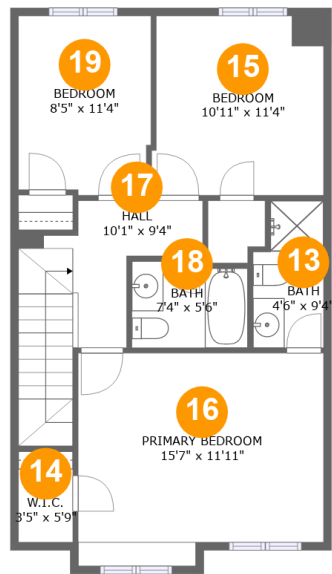
Room dimensions

Floor 2 Total:644sqft Excluded: 95sqft

#		Max Dimensions	sqft	Included
7	Dining Area	7'8" x 5'6"	42 sq. ft	Yes
8	Kitchen	7'8" x 8'2"	63 sq. ft	Yes
9	Foyer	7'7" x 14'0"	133 sq. ft	Yes
10	Living Room	19'4" x 19'3"	354 sq. ft	Yes
11	WC	3'5" x 5'9"	20 sq. ft	Yes
12	Back Deck	12'1" x 7'9"	95 sq. ft	No

Home report

3384 Morning Dove Road, Roanoke, Virginia 24018, United States



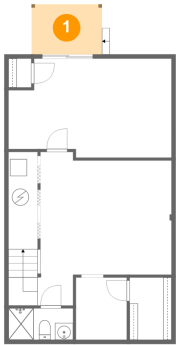
Room dimensions

Floor 3 Total:655sqft Excluded: 0sqft

#		Max Dimensions	sqft	Included
13	Bath	4'6" x 9'4"	38 sq. ft	Yes
14	W.I.C.	3'5" x 5'9"	20 sq. ft	Yes
15	Bedroom	10'11" x 11'4"	121 sq. ft	Yes
16	Primary Bedroom	15'7" x 11'11"	197 sq. ft	Yes
17	Hall	10'1" x 9'4"	94 sq. ft	Yes
18	Bath	7'4" x 5'6"	39 sq. ft	Yes
19	Bedroom	8'5" x 11'4"	93 sq. ft	Yes

3384 Morning Dove Road, Roanoke, Virginia 24018, United States

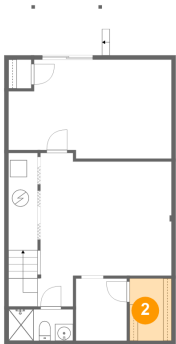
1 Floor 1 - Covered Deck



Max Dimensions: 8'4" x 5'11"
Calculated Area: 50 sq. ft
Included: No

Heated: No
Finished: Yes
Enclosed: No
Contiguous: Yes
Permitted: Yes
Wet space: No
Addition: No
Conversion: No

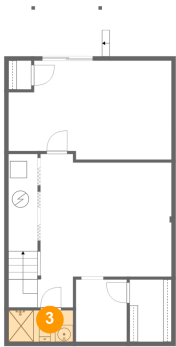
2 Floor 1 - W.I.C.



Max Dimensions: 5'0" x 7'5"
Calculated Area: 37 sq. ft
Included: Yes

Heated: Yes
Finished: Yes
Enclosed: Yes
Contiguous: Yes
Permitted: Yes
Wet space: No
Addition: No
Conversion: No

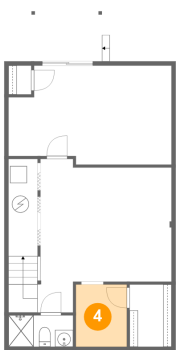
3 Floor 1 - Bath



Max Dimensions: 7'8" x 3'9"
Calculated Area: 29 sq. ft
Included: Yes

Heated: Yes
Finished: Yes
Enclosed: Yes
Contiguous: Yes
Permitted: Yes
Wet space: Yes
Addition: No
Conversion: No

4 Floor 1 - Room



Max Dimensions: 6'1" x 7'5"
Calculated Area: 45 sq. ft
Included: Yes

Heated: Yes
Finished: Yes
Enclosed: Yes
Contiguous: Yes
Permitted: Yes
Wet space: No
Addition: No
Conversion: No

5 Floor 1 - Recreation Room



Max Dimensions: 15'7" x 18'2"
Calculated Area: 293 sq. ft
Included: Yes

Heated: Yes
Finished: Yes
Enclosed: Yes
Contiguous: Yes
Permitted: Yes
Wet space: No
Addition: No
Conversion: No

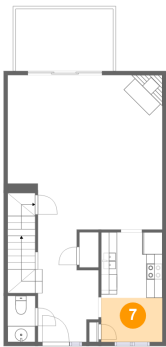
6 Floor 1 - Room



Max Dimensions: 19'4" x 11'9"
Calculated Area: 208 sq. ft
Included: Yes

Heated: Yes
Finished: Yes
Enclosed: Yes
Contiguous: Yes
Permitted: Yes
Wet space: No
Addition: No
Conversion: No

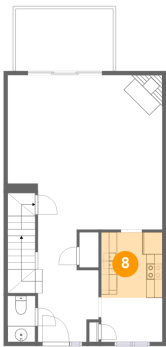
7 Floor 2 - Dining Area



Max Dimensions: 7'8" x 5'6"
Calculated Area: 42 sq. ft
Included: Yes

Heated: Yes
Finished: Yes
Enclosed: Yes
Contiguous: Yes
Permitted: Yes
Wet space: No
Addition: No
Conversion: No

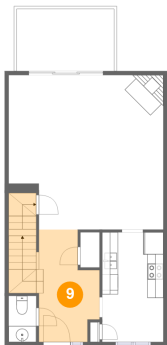
8 Floor 2 - Kitchen



Max Dimensions: 7'8" x 8'2"
Calculated Area: 63 sq. ft
Included: Yes

Heated: Yes
Finished: Yes
Enclosed: Yes
Contiguous: Yes
Permitted: Yes
Wet space: No
Addition: No
Conversion: No

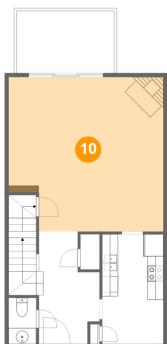
9 Floor 2 - Foyer



Max Dimensions: 7'7" x 14'0"
Calculated Area: 133 sq. ft
Included: Yes

Heated: Yes
Finished: Yes
Enclosed: Yes
Contiguous: Yes
Permitted: Yes
Wet space: No
Addition: No
Conversion: No

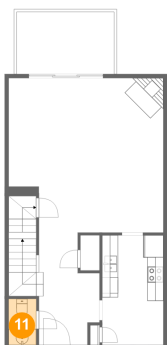
10 Floor 2 - Living Room



Max Dimensions: 19'4" x 19'3"
Calculated Area: 354 sq. ft
Included: Yes

Heated: Yes
Finished: Yes
Enclosed: Yes
Contiguous: Yes
Permitted: Yes
Wet space: No
Addition: No
Conversion: No

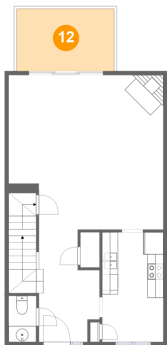
11 Floor 2 - WC



Max Dimensions: 3'5" x 5'9"
Calculated Area: 20 sq. ft
Included: Yes

Heated: Yes
Finished: Yes
Enclosed: Yes
Contiguous: Yes
Permitted: Yes
Wet space: Yes
Addition: No
Conversion: No

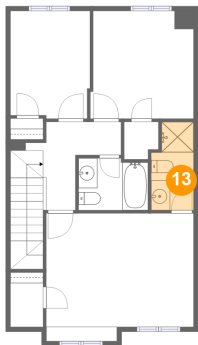
12 Floor 2 - Back Deck



Max Dimensions: 12'1" x 7'9"
Calculated Area: 95 sq. ft
Included: No

Heated: No
Finished: Yes
Enclosed: No
Contiguous: No
Permitted: Yes
Wet space: No
Addition: No
Conversion: No

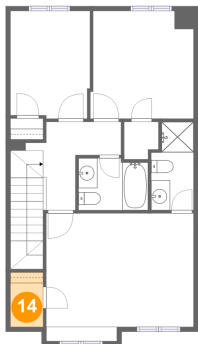
13 Floor 3 - Bath



Max Dimensions: 4'6" x 9'4"
Calculated Area: 38 sq. ft
Included: Yes

Heated: Yes
Finished: Yes
Enclosed: Yes
Contiguous: Yes
Permitted: Yes
Wet space: Yes
Addition: No
Conversion: No

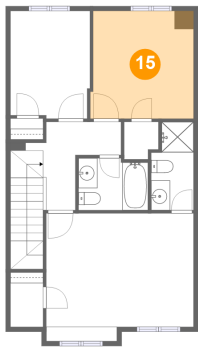
14 Floor 3 - W.I.C.



Max Dimensions: 3'5" x 5'9"
Calculated Area: 20 sq. ft
Included: Yes

Heated: Yes
Finished: Yes
Enclosed: Yes
Contiguous: Yes
Permitted: Yes
Wet space: No
Addition: No
Conversion: No

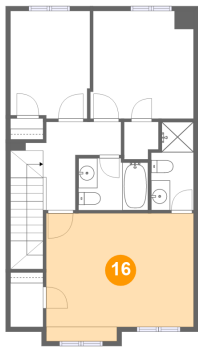
15 Floor 3 - Bedroom



Max Dimensions: 10'11" x 11'4"
Calculated Area: 121 sq. ft
Included: Yes

Heated: Yes
Finished: Yes
Enclosed: Yes
Contiguous: Yes
Permitted: Yes
Wet space: No
Addition: No
Conversion: No

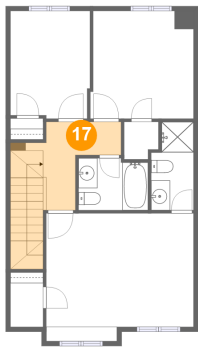
16 Floor 3 - Primary Bedroom



Max Dimensions: 15'7" x 11'11"
Calculated Area: 197 sq. ft
Included: Yes

Heated: Yes
Finished: Yes
Enclosed: Yes
Contiguous: Yes
Permitted: Yes
Wet space: No
Addition: No
Conversion: No

17 Floor 3 - Hall

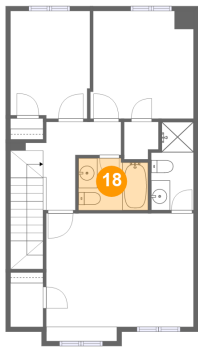


Max Dimensions: 10'1" x 9'4"
Calculated Area: 94 sq. ft
Included: Yes

Heated: Yes
Finished: Yes
Enclosed: Yes
Contiguous: Yes
Permitted: Yes
Wet space: No
Addition: No
Conversion: No

3384 Morning Dove Road, Roanoke, Virginia 24018, United States

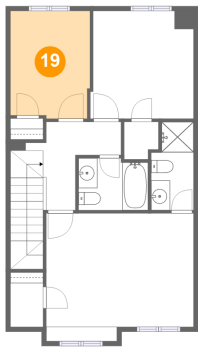
18 Floor 3 - Bath



Max Dimensions: 7'4" x 5'6"
Calculated Area: 39 sq. ft
Included: Yes

Heated: Yes
Finished: Yes
Enclosed: Yes
Contiguous: Yes
Permitted: Yes
Wet space: Yes
Addition: No
Conversion: No

19 Floor 3 - Bedroom



Max Dimensions: 8'5" x 11'4"
Calculated Area: 93 sq. ft
Included: Yes

Heated: Yes
Finished: Yes
Enclosed: Yes
Contiguous: Yes
Permitted: Yes
Wet space: No
Addition: No
Conversion: No