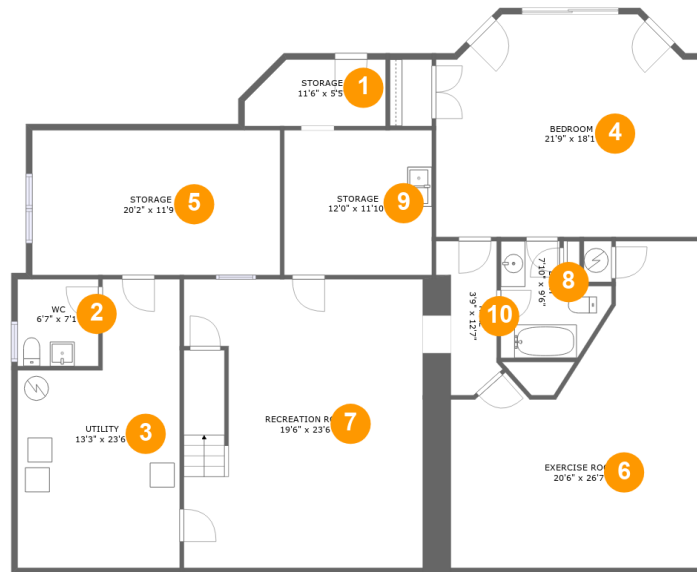


2702 Wycliffe Avenue Southwest, South Roanoke, Roanoke, Roanoke, Virginia, United



Room Dimensions

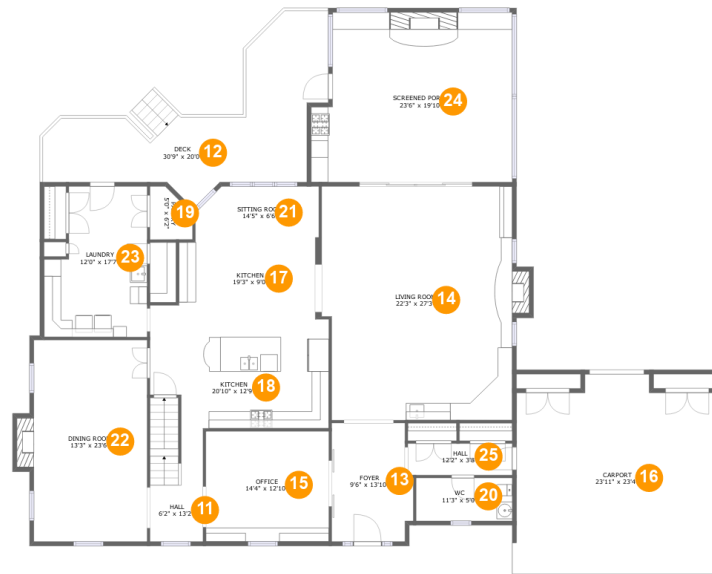
Floor 1

Total sqft: 2337

Living area: 1536

#	Room name	Dimensions	Area (sqft)	Counted as Living Area
1	Storage	11'6" x 5'5"	57 sq. ft	No
2	Wc	6'7" x 7'1"	47 sq. ft	No
3	Utility	13'3" x 23'6"	259 sq. ft	No
4	Bedroom	21'9" x 18'1"	368 sq. ft	Yes
5	Storage	20'2" x 11'9"	238 sq. ft	No
6	Exercise Room	20'6" x 26'7"	396 sq. ft	Yes
7	Recreation Room	19'6" x 23'6"	454 sq. ft	Yes
8	Bath	7'10" x 9'6"	64 sq. ft	Yes
9	Storage	12'0" x 11'10"	142 sq. ft	No
10	Hall	3'9" x 12'7"	49 sq. ft	Yes

2702 Wycliffe Avenue Southwest, South Roanoke, Roanoke, Roanoke, Virginia, United



Room Dimensions

Floor 2

Total sqft: 3751

Living area: 2348

#	Room name	Dimensions	Area (sqft)	Counted as Living Area
11	Hall	6'2" x 13'2"	92 sq. ft	Yes
12	Deck	30'9" x 20'0"	349 sq. ft	No
13	Foyer	9'6" x 13'10"	123 sq. ft	Yes
14	Living Room	22'3" x 27'3"	602 sq. ft	Yes
15	Office	14'4" x 12'10"	185 sq. ft	Yes
16	Carport	23'11" x 23'4"	514 sq. ft	No
17	Kitchen	19'3" x 9'0"	148 sq. ft	Yes
18	Kitchen	20'10" x 12'9"	251 sq. ft	Yes
19	Pantry	5'0" x 6'2"	26 sq. ft	Yes
20	Wc	11'3" x 5'0"	56 sq. ft	Yes
21	Sitting Room	14'5" x 6'6"	89 sq. ft	Yes

Scan captured on Thu, 03 Oct 2024 20:26:14 GMT

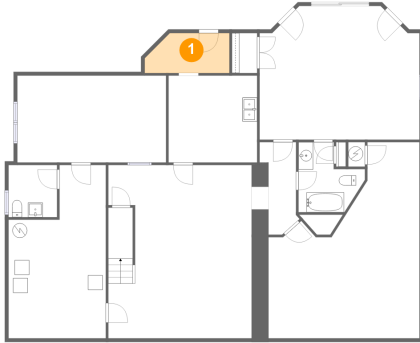
Information is calculated by CubiCasa technology; deemed highly reliable but not guaranteed.

**2702 Wycliffe Avenue Southwest, South
Roanoke, Roanoke, Roanoke, Virginia, United**

#	Room name	Dimensions	Area (sqft)	Counted as Living Area
22	Dining Room	13'3" x 23'6"	322 sq. ft	Yes
23	Laundry	12'0" x 17'7"	187 sq. ft	Yes
24	Screened Porch	23'6" x 19'10"	437 sq. ft	No
25	Hall	12'2" x 3'8"	45 sq. ft	Yes

2702 Wycliffe Avenue Southwest, South Roanoke, Roanoke, Roanoke, Virginia, United

1 Floor 1 - Storage



Dimensions: 11'6" x 5'5"
Area: 57 sq. ft
Counted as Living Area: No

Heated: No
Finished: No
Enclosed: No
Contiguous: Yes
Permitted: Yes
Wet Space: No
Addition: No
Conversion: No

2 Floor 1 - Wc

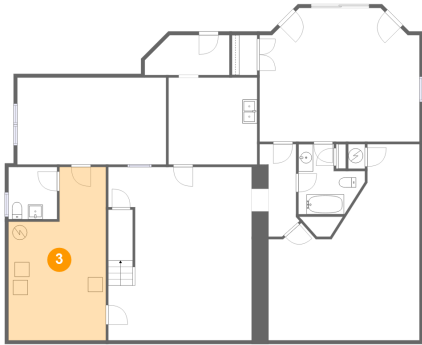


Dimensions: 6'7" x 7'1"
Area: 47 sq. ft
Counted as Living Area: No

Heated: Yes
Finished: No
Enclosed: Yes
Contiguous: Yes
Permitted: Yes
Wet Space: Yes
Addition: No
Conversion: No

2702 Wycliffe Avenue Southwest, South Roanoke, Roanoke, Roanoke, Virginia, United

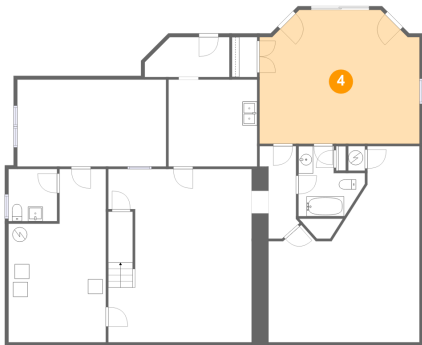
3 Floor 1 - Utility



Dimensions: 13'3" x 23'6"
Area: 259 sq. ft
Counted as Living Area: No

Heated: Yes
Finished: No
Enclosed: Yes
Contiguous: Yes
Permitted: Yes
Wet Space: No
Addition: No
Conversion: No

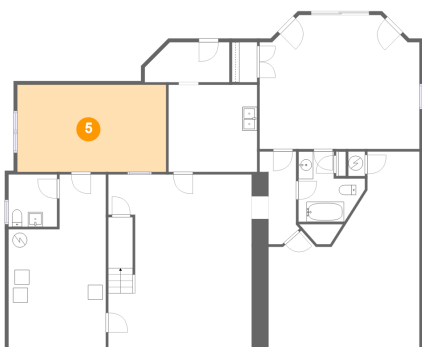
4 Floor 1 - Bedroom



Dimensions: 21'9" x 18'1"
Area: 368 sq. ft
Counted as Living Area:
Yes

Heated: Yes
Finished: Yes
Enclosed: Yes
Contiguous:
Yes
Permitted: Yes
Wet Space: No
Addition: No
Conversion: No

5 Floor 1 - Storage

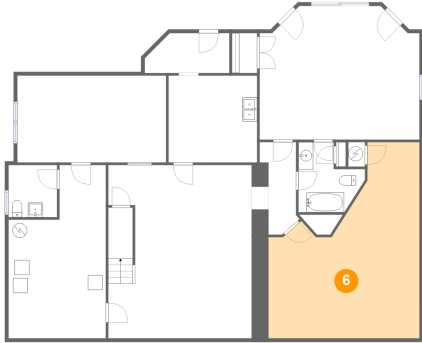


Dimensions: 20'2" x 11'9"
Area: 238 sq. ft
Counted as Living Area: No

Heated: No
Finished: No
Enclosed: No
Contiguous: No
Permitted: Yes
Wet Space: No
Addition: No
Conversion: No

2702 Wycliffe Avenue Southwest, South Roanoke, Roanoke, Roanoke, Virginia, United

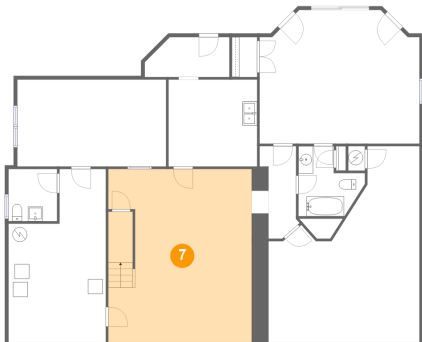
6 Floor 1 - Exercise Room



Dimensions: 20'6" x 26'7"
Area: 396 sq. ft
Counted as Living Area:
Yes

Heated: Yes
Finished: Yes
Enclosed: Yes
Contiguous:
Yes
Permitted: Yes
Wet Space: No
Addition: No
Conversion: No

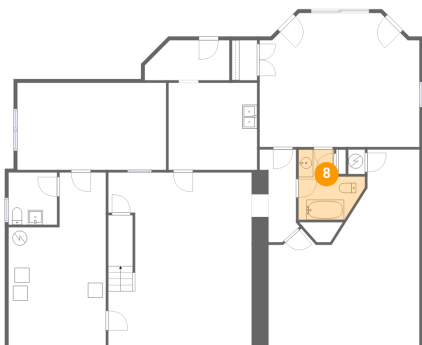
7 Floor 1 - Recreation Room



Dimensions: 19'6" x 23'6"
Area: 454 sq. ft
Counted as Living Area:
Yes

Heated: Yes
Finished: Yes
Enclosed: Yes
Contiguous:
Yes
Permitted: Yes
Wet Space: No
Addition: No
Conversion: No

8 Floor 1 - Bath

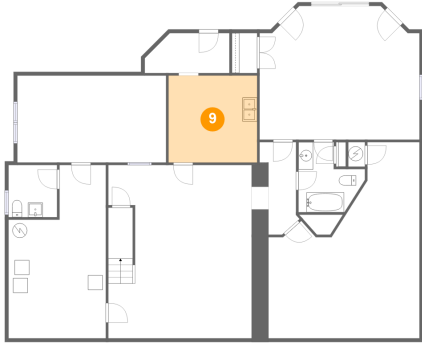


Dimensions: 7'10" x 9'6"
Area: 64 sq. ft
Counted as Living Area:
Yes

Heated: Yes
Finished: Yes
Enclosed: Yes
Contiguous:
Yes
Permitted: Yes
Wet Space: Yes
Addition: No
Conversion: No

2702 Wycliffe Avenue Southwest, South Roanoke, Roanoke, Roanoke, Virginia, United

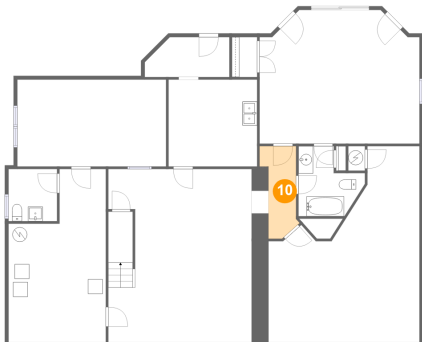
9 Floor 1 - Storage



Dimensions: 12'0" x 11'10"
Area: 142 sq. ft
Counted as Living Area: No

Heated: No
Finished: No
Enclosed: No
Contiguous: No
Permitted: Yes
Wet Space: No
Addition: No
Conversion: No

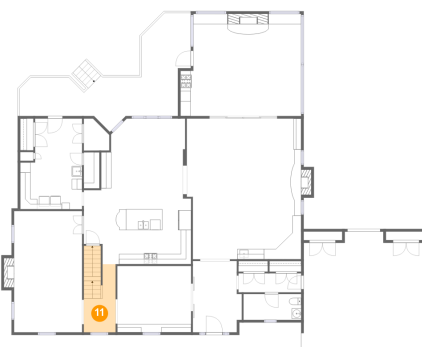
10 Floor 1 - Hall



Dimensions: 3'9" x 12'7"
Area: 49 sq. ft
Counted as Living Area:
Yes

Heated: Yes
Finished: Yes
Enclosed: Yes
Contiguous:
Yes
Permitted: Yes
Wet Space: No
Addition: No
Conversion: No

11 Floor 2 - Hall

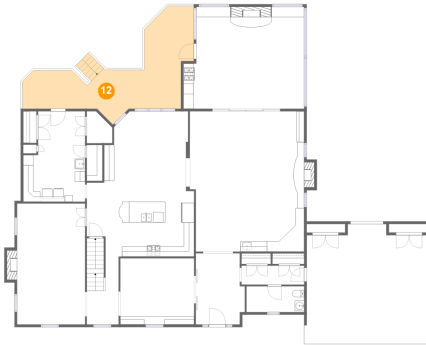


Dimensions: 6'2" x 13'2"
Area: 92 sq. ft
Counted as Living Area:
Yes

Heated: Yes
Finished: Yes
Enclosed: Yes
Contiguous:
Yes
Permitted: Yes
Wet Space: No
Addition: No
Conversion: No

2702 Wycliffe Avenue Southwest, South Roanoke, Roanoke, Roanoke, Virginia, United

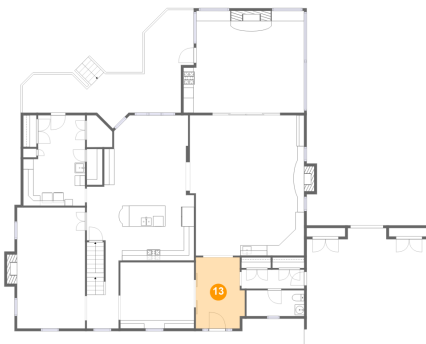
12 Floor 2 - Deck



Dimensions: 30'9" x 20'0"
Area: 349 sq. ft
Counted as Living Area: No

Heated: No
Finished: Yes
Enclosed: No
Contiguous: Yes
Permitted: Yes
Wet Space: No
Addition: No
Conversion: No

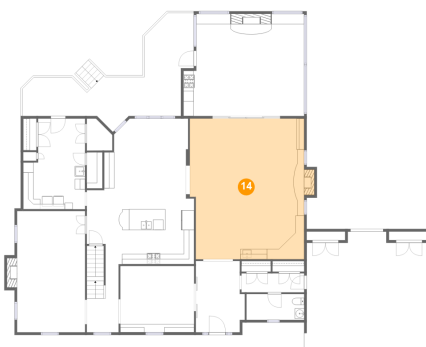
13 Floor 2 - Foyer



Dimensions: 9'6" x 13'10"
Area: 123 sq. ft
Counted as Living Area:
Yes

Heated: Yes
Finished: Yes
Enclosed: Yes
Contiguous:
Yes
Permitted: Yes
Wet Space: No
Addition: No
Conversion: No

14 Floor 2 - Living Room

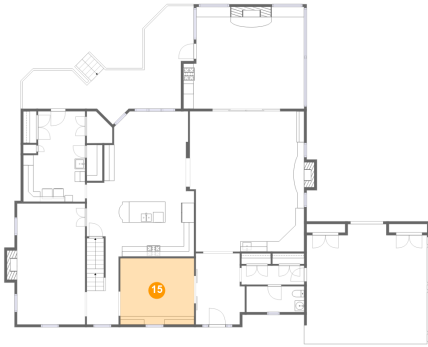


Dimensions: 22'3" x 27'3"
Area: 602 sq. ft
Counted as Living Area:
Yes

Heated: Yes
Finished: Yes
Enclosed: Yes
Contiguous:
Yes
Permitted: Yes
Wet Space: No
Addition: No
Conversion: No

2702 Wycliffe Avenue Southwest, South Roanoke, Roanoke, Roanoke, Virginia, United

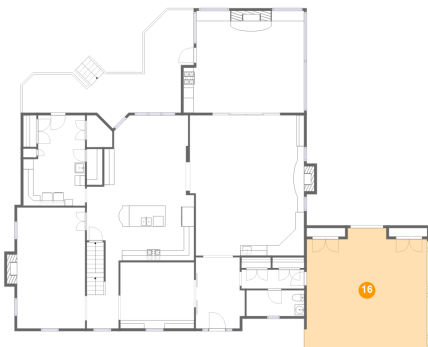
15 Floor 2 - Office



Dimensions: 14'4" x 12'10"
Area: 185 sq. ft
Counted as Living Area:
Yes

Heated: Yes
Finished: Yes
Enclosed: Yes
Contiguous:
Yes
Permitted: Yes
Wet Space: No
Addition: No
Conversion: No

16 Floor 2 - Carport



Dimensions: 23'11" x 23'4"
Area: 514 sq. ft
Counted as Living Area: No

Heated: No
Finished: Yes
Enclosed: No
Contiguous: Yes
Permitted: Yes
Wet Space: No
Addition: No
Conversion: No

17 Floor 2 - Kitchen

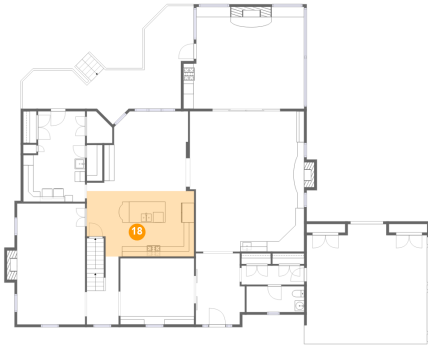


Dimensions: 19'3" x 9'0"
Area: 148 sq. ft
Counted as Living Area:
Yes

Heated: Yes
Finished: Yes
Enclosed: Yes
Contiguous:
Yes
Permitted: Yes
Wet Space: No
Addition: No
Conversion: No

2702 Wycliffe Avenue Southwest, South Roanoke, Roanoke, Roanoke, Virginia, United

18 Floor 2 - Kitchen



Dimensions: 20'10" x 12'9"
Area: 251 sq. ft
Counted as Living Area:
Yes

Heated: Yes
Finished: Yes
Enclosed: Yes
Contiguous:
Yes
Permitted: Yes
Wet Space: No
Addition: No
Conversion: No

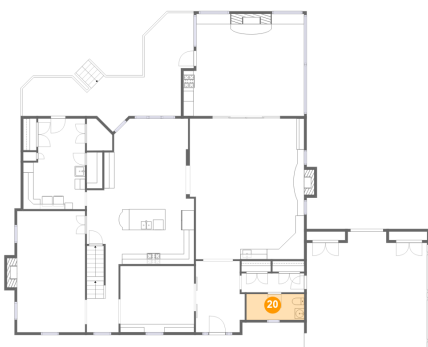
19 Floor 2 - Pantry



Dimensions: 5'0" x 6'2"
Area: 26 sq. ft
Counted as Living Area:
Yes

Heated: Yes
Finished: Yes
Enclosed: Yes
Contiguous:
Yes
Permitted: Yes
Wet Space: No
Addition: No
Conversion: No

20 Floor 2 - Wc



Dimensions: 11'3" x 5'0"
Area: 56 sq. ft
Counted as Living Area:
Yes

Heated: Yes
Finished: Yes
Enclosed: Yes
Contiguous:
Yes
Permitted: Yes
Wet Space: Yes
Addition: No
Conversion: No

2702 Wycliffe Avenue Southwest, South Roanoke, Roanoke, Roanoke, Virginia, United

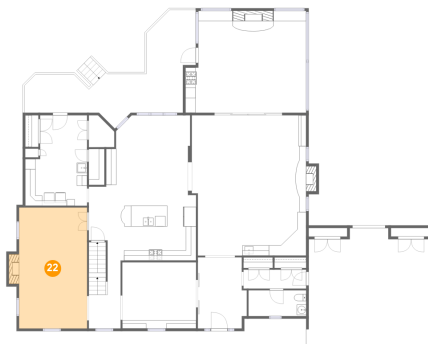
21 Floor 2 - Sitting Room



Dimensions: 14'5" x 6'6"
Area: 89 sq. ft
Counted as Living Area:
Yes

Heated: Yes
Finished: Yes
Enclosed: Yes
Contiguous:
Yes
Permitted: Yes
Wet Space: No
Addition: No
Conversion: No

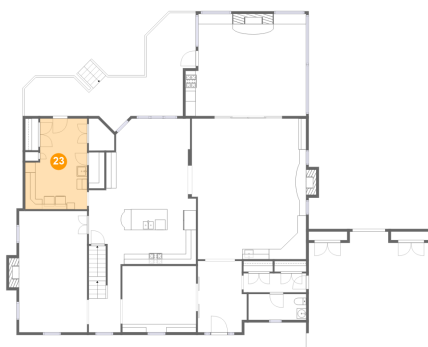
22 Floor 2 - Dining Room



Dimensions: 13'3" x 23'6"
Area: 322 sq. ft
Counted as Living Area:
Yes

Heated: Yes
Finished: Yes
Enclosed: Yes
Contiguous:
Yes
Permitted: Yes
Wet Space: No
Addition: No
Conversion: No

23 Floor 2 - Laundry

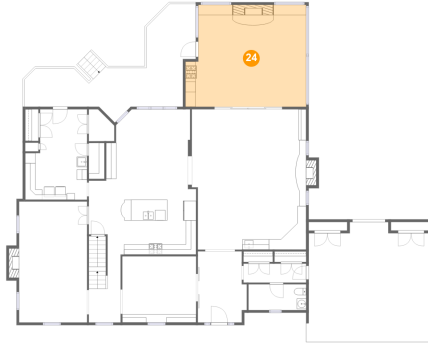


Dimensions: 12'0" x 17'7"
Area: 187 sq. ft
Counted as Living Area:
Yes

Heated: Yes
Finished: Yes
Enclosed: Yes
Contiguous:
Yes
Permitted: Yes
Wet Space: No
Addition: No
Conversion: No

2702 Wycliffe Avenue Southwest, South Roanoke, Roanoke, Roanoke, Virginia, United

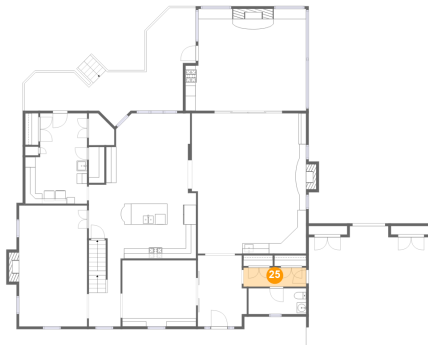
24 Floor 2 - Screened Porch



Dimensions: 23'6" x 19'10"
Area: 437 sq. ft
Counted as Living Area: No

Heated: No
Finished: Yes
Enclosed: No
Contiguous: Yes
Permitted: Yes
Wet Space: No
Addition: No
Conversion: No

25 Floor 2 - Hall



Dimensions: 12'2" x 3'8"
Area: 45 sq. ft
Counted as Living Area:
Yes

Heated: Yes
Finished: Yes
Enclosed: Yes
Contiguous:
Yes
Permitted: Yes
Wet Space: No
Addition: No
Conversion: No