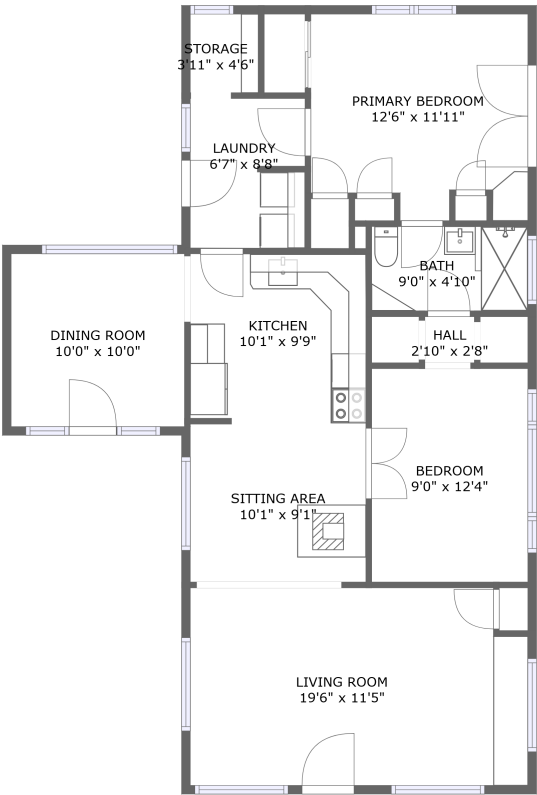






**10121 South Butte Creek Road, South Clackamas
County, Scotts Mills, Clackamas County, Oregon,**



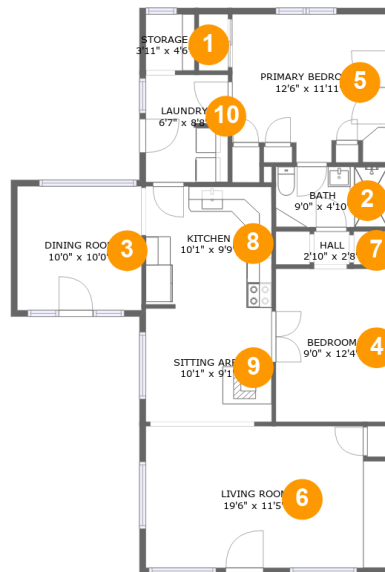
FLOOR 1

Property Summary

 **0** garages  **2** bedrooms  **1** bathrooms  **0** half baths

 **1** floors  **1,023** Gross Living Area sqft  **1,045** total sqft

10121 South Butte Creek Road, South Clackamas County, Scotts Mills, Clackamas County, Oregon,



Room Dimensions

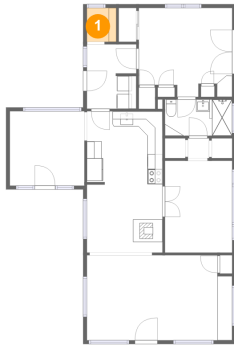
Floor 1

Total sqft: 1045**Living area: 1023**

#	Room name	Dimensions	Area (sqft)	Counted as Living Area
1	Storage	3'11" x 4'6"	18 sq. ft	No
2	Bath	9'0" x 4'10"	44 sq. ft	Yes
3	Dining Room	10'0" x 10'0"	100 sq. ft	Yes
4	Bedroom	9'0" x 12'4"	111 sq. ft	Yes
5	Primary Bedroom	12'6" x 11'11"	137 sq. ft	Yes
6	Living Room	19'6" x 11'5"	216 sq. ft	Yes
7	Hall	2'10" x 2'8"	8 sq. ft	Yes
8	Kitchen	10'1" x 9'9"	99 sq. ft	Yes
9	Sitting Area	10'1" x 9'1"	92 sq. ft	Yes
10	Laundry	6'7" x 8'8"	56 sq. ft	Yes

10121 South Butte Creek Road, South Clackamas County, Scotts Mills, Clackamas County, Oregon,

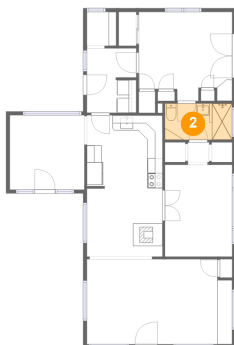
1 Floor 1 - Storage



Dimensions: 3'11" x 4'6"
Area: 18 sq. ft
Counted as Living Area: No

Heated: No
Finished: No
Enclosed: No
Contiguous: Yes
Permitted: Yes
Wet Space: No
Addition: No
Conversion: No

2 Floor 1 - Bath

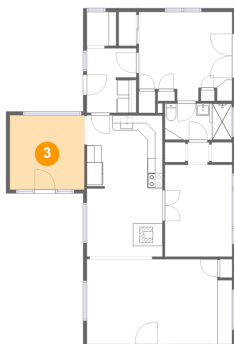


Dimensions: 9'0" x 4'10"
Area: 44 sq. ft
Counted as Living Area: Yes

Heated: Yes
Finished: Yes
Enclosed: Yes
Contiguous: Yes
Permitted: Yes
Wet Space: Yes
Addition: No
Conversion: No

10121 South Butte Creek Road, South Clackamas County, Scotts Mills, Clackamas County, Oregon,

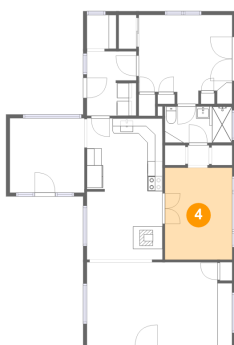
3 Floor 1 - Dining Room



Dimensions: 10'0" x 10'0"
Area: 100 sq. ft
Counted as Living Area:
Yes

Heated: Yes
Finished: Yes
Enclosed: Yes
Contiguous:
Yes
Permitted: Yes
Wet Space: No
Addition: No
Conversion: No

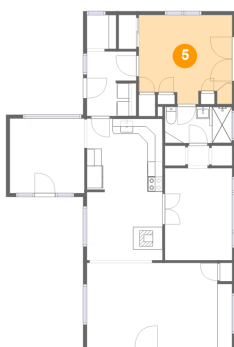
4 Floor 1 - Bedroom



Dimensions: 9'0" x 12'4"
Area: 111 sq. ft
Counted as Living Area:
Yes

Heated: Yes
Finished: Yes
Enclosed: Yes
Contiguous:
Yes
Permitted: Yes
Wet Space: No
Addition: No
Conversion: No

5 Floor 1 - Primary Bedroom

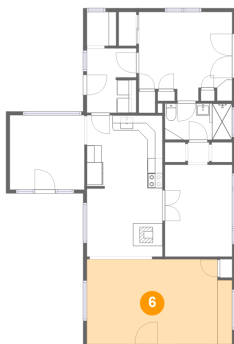


Dimensions: 12'6" x 11'11"
Area: 137 sq. ft
Counted as Living Area:
Yes

Heated: Yes
Finished: Yes
Enclosed: Yes
Contiguous:
Yes
Permitted: Yes
Wet Space: No
Addition: No
Conversion: No

10121 South Butte Creek Road, South Clackamas County, Scotts Mills, Clackamas County, Oregon,

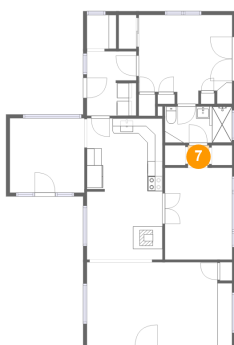
6 Floor 1 - Living Room



Dimensions: 19'6" x 11'5"
Area: 216 sq. ft
Counted as Living Area:
Yes

Heated: Yes
Finished: Yes
Enclosed: Yes
Contiguous:
Yes
Permitted: Yes
Wet Space: No
Addition: No
Conversion: No

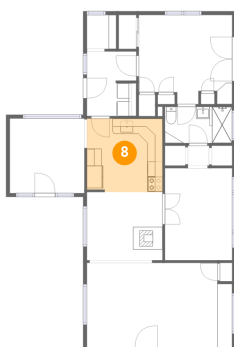
7 Floor 1 - Hall



Dimensions: 2'10" x 2'8"
Area: 8 sq. ft
Counted as Living Area:
Yes

Heated: Yes
Finished: Yes
Enclosed: Yes
Contiguous:
Yes
Permitted: Yes
Wet Space: No
Addition: No
Conversion: No

8 Floor 1 - Kitchen

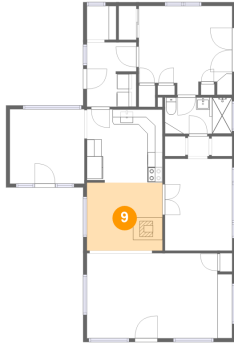


Dimensions: 10'1" x 9'9"
Area: 99 sq. ft
Counted as Living Area:
Yes

Heated: Yes
Finished: Yes
Enclosed: Yes
Contiguous:
Yes
Permitted: Yes
Wet Space: No
Addition: No
Conversion: No

10121 South Butte Creek Road, South Clackamas County, Scotts Mills, Clackamas County, Oregon,

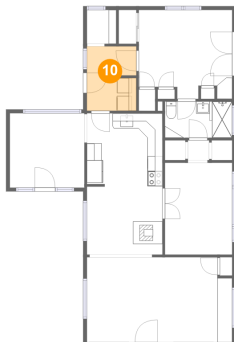
9 Floor 1 - Sitting Area



Dimensions: 10'1" x 9'1"
Area: 92 sq. ft
Counted as Living Area:
Yes

Heated: Yes
Finished: Yes
Enclosed: Yes
Contiguous:
Yes
Permitted: Yes
Wet Space: No
Addition: No
Conversion: No

10 Floor 1 - Laundry



Dimensions: 6'7" x 8'8"
Area: 56 sq. ft
Counted as Living Area:
Yes

Heated: Yes
Finished: Yes
Enclosed: Yes
Contiguous:
Yes
Permitted: Yes
Wet Space: No
Addition: No
Conversion: No