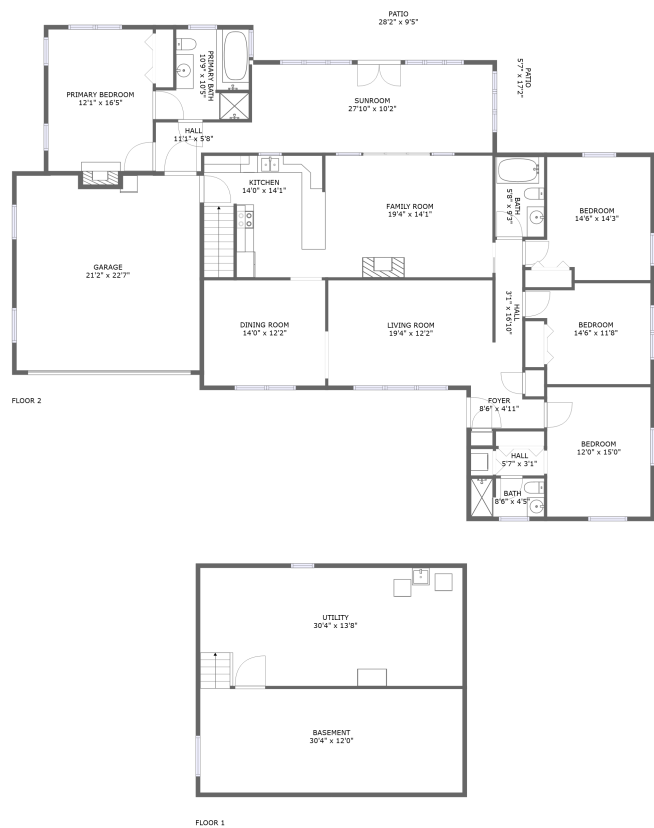





674 Azalea Rd,Daleville,Virginia,United States




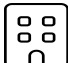
Property summary


 **1** Garages


 **4** Bedrooms

 **3** Bathrooms

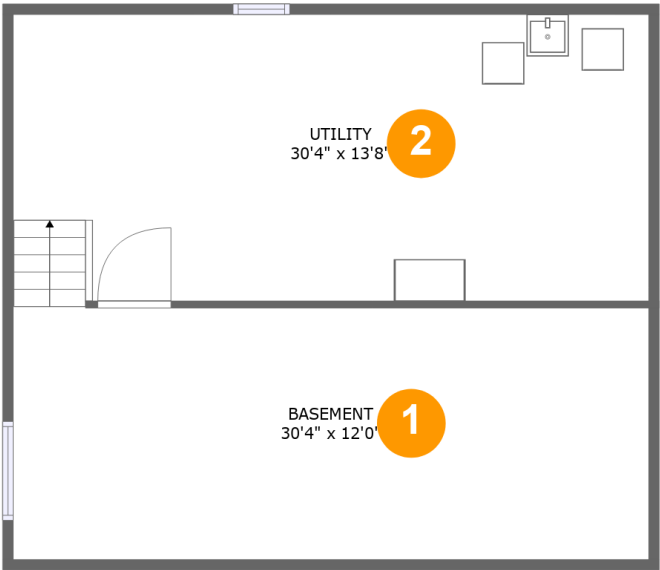
 **0** Half baths

 **2** Floors

 **2,484** Gross living area sqft

 **4,154** Total sqft

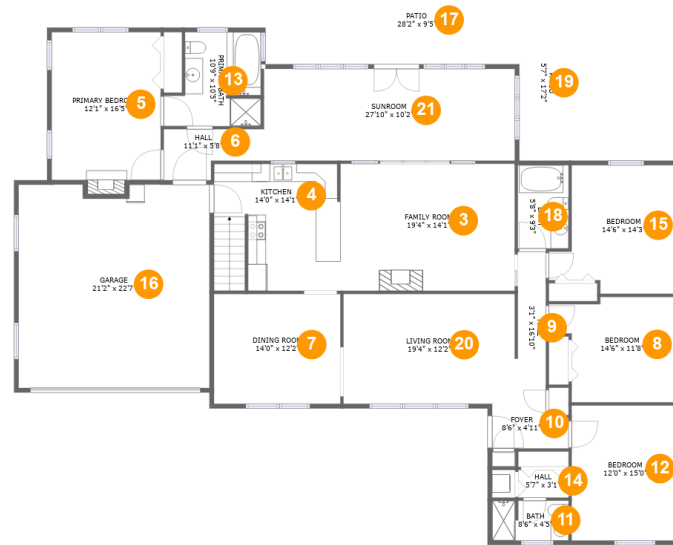
674 Azalea Rd,Daleville,Virginia,United States



Room dimensions

Floor 1 Total sqft: 847 Living area: 0

#		Dimensions	sqft	Counted as living area
1	Basement	30'4" x 12'0"	365 sq. ft	No
2	Utility	30'4" x 13'8"	416 sq. ft	No

674 Azalea Rd,Daleville,Virginia,United States**Room dimensions****Floor 2****Total sqft: 3307 Living area: 2484**

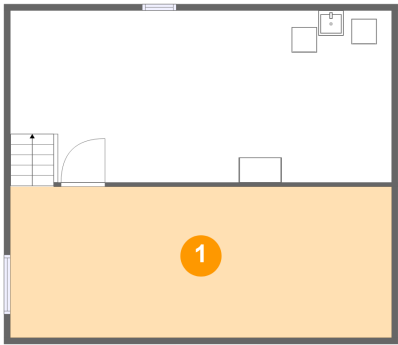
#		Dimensions	sqft	Counted as living area
3	Family Room	19'4" x 14'1"	273 sq. ft	Yes
4	Kitchen	14'0" x 14'1"	194 sq. ft	Yes
5	Primary Bedroom	12'1" x 16'5"	205 sq. ft	Yes
6	Hall	11'1" x 5'8"	50 sq. ft	Yes
7	Dining Room	14'0" x 12'2"	171 sq. ft	Yes
8	Bedroom	14'6" x 11'8"	146 sq. ft	Yes
9	Hall	3'1" x 16'10"	53 sq. ft	Yes
10	Foyer	8'6" x 4'11"	38 sq. ft	Yes
11	Bath	8'6" x 4'5"	37 sq. ft	Yes
12	Bedroom	12'0" x 15'0"	179 sq. ft	Yes
13	Primary Bath	10'9" x 10'5"	95 sq. ft	Yes

674 Azalea Rd,Daleville,Virginia,United States

#		Dimensions	sqft	Counted as living area
14	Hall	5'7" x 3'1"	17 sq. ft	Yes
15	Bedroom	14'6" x 14'3"	174 sq. ft	Yes
16	Garage	21'2" x 22'7"	470 sq. ft	No
17	Patio	28'2" x 9'5"	224 sq. ft	No
18	Bath	5'8" x 9'3"	52 sq. ft	Yes
19	Patio	5'7" x 17'2"	97 sq. ft	No
20	Living Room	19'4" x 12'2"	234 sq. ft	Yes
21	Sunroom	27'10" x 10'2"	284 sq. ft	Yes

674 Azalea Rd,Daleville,Virginia,United States

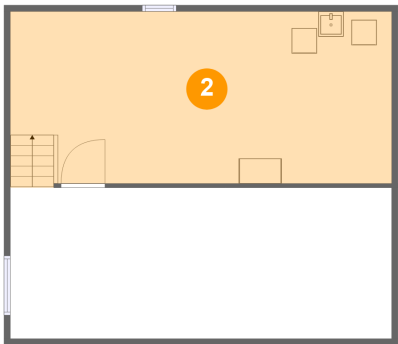
1 Floor 1 - Basement



Dimensions: 30'4" x 12'0"
Area: 365 sq. ft
Counted as living area: No

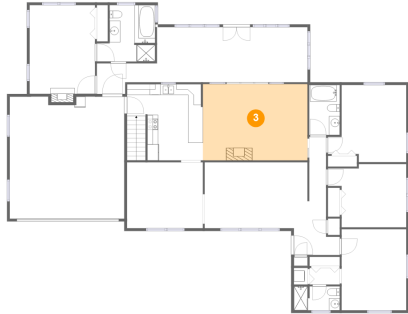
Heated: Yes
Finished: No
Enclosed: Yes
Contiguous: Yes
Permitted: Yes
Wet space: No
Addition: No
Conversion: No

2 Floor 1 - Utility



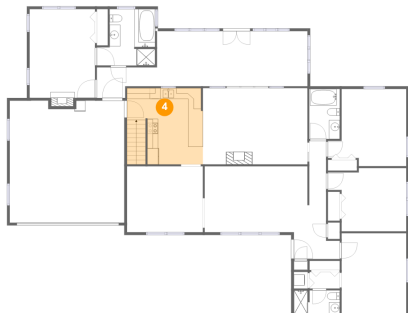
Dimensions: 30'4" x 13'8"
Area: 416 sq. ft
Counted as living area: No

Heated: Yes
Finished: No
Enclosed: Yes
Contiguous: Yes
Permitted: Yes
Wet space: No
Addition: No
Conversion: No

674 Azalea Rd,Daleville,Virginia,United States**3 Floor 2 - Family Room**

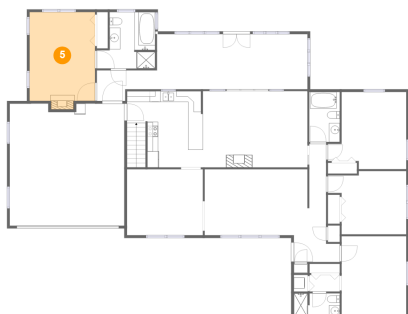
Dimensions: 19'4" x 14'1"
Area: 273 sq. ft
Counted as living area: Yes

Heated: Yes
Finished: Yes
Enclosed: Yes
Contiguous: Yes
Permitted: Yes
Wet space: No
Addition: No
Conversion: No

4 Floor 2 - Kitchen

Dimensions: 14'0" x 14'1"
Area: 194 sq. ft
Counted as living area: Yes

Heated: Yes
Finished: Yes
Enclosed: Yes
Contiguous: Yes
Permitted: Yes
Wet space: No
Addition: No
Conversion: No

5 Floor 2 - Primary Bedroom

Dimensions: 12'1" x 16'5"
Area: 205 sq. ft
Counted as living area: Yes

Heated: Yes
Finished: Yes
Enclosed: Yes
Contiguous: Yes
Permitted: Yes
Wet space: No
Addition: No
Conversion: No

674 Azalea Rd,Daleville,Virginia,United States**6 Floor 2 - Hall**

Dimensions: 11'1" x 5'8"
Area: 50 sq. ft
Counted as living area: Yes

Heated: Yes
Finished: Yes
Enclosed: Yes
Contiguous: Yes
Permitted: Yes
Wet space: No
Addition: No
Conversion: No

7 Floor 2 - Dining Room

Dimensions: 14'0" x 12'2"
Area: 171 sq. ft
Counted as living area: Yes

Heated: Yes
Finished: Yes
Enclosed: Yes
Contiguous: Yes
Permitted: Yes
Wet space: No
Addition: No
Conversion: No

8 Floor 2 - Bedroom

Dimensions: 14'6" x 11'8"
Area: 146 sq. ft
Counted as living area: Yes

Heated: Yes
Finished: Yes
Enclosed: Yes
Contiguous: Yes
Permitted: Yes
Wet space: No
Addition: No
Conversion: No

674 Azalea Rd,Daleville,Virginia,United States**9 Floor 2 - Hall**

Dimensions: 3'1" x 16'10"
Area: 53 sq. ft
Counted as living area: Yes

Heated: Yes
Finished: Yes
Enclosed: Yes
Contiguous: Yes
Permitted: Yes
Wet space: No
Addition: No
Conversion: No

10 Floor 2 - Foyer

Dimensions: 8'6" x 4'11"
Area: 38 sq. ft
Counted as living area: Yes

Heated: Yes
Finished: Yes
Enclosed: Yes
Contiguous: Yes
Permitted: Yes
Wet space: No
Addition: No
Conversion: No

11 Floor 2 - Bath

Dimensions: 8'6" x 4'5"
Area: 37 sq. ft
Counted as living area: Yes

Heated: Yes
Finished: Yes
Enclosed: Yes
Contiguous: Yes
Permitted: Yes
Wet space: Yes
Addition: No
Conversion: No

674 Azalea Rd,Daleville,Virginia,United States**12 Floor 2 - Bedroom**

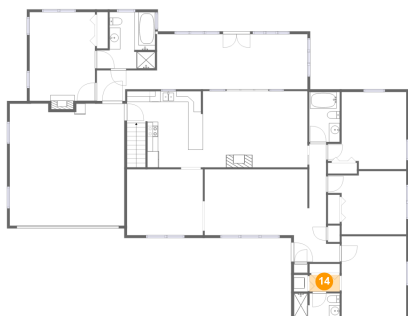
Dimensions: 12'0" x 15'0"
Area: 179 sq. ft
Counted as living area: Yes

Heated: Yes
Finished: Yes
Enclosed: Yes
Contiguous: Yes
Permitted: Yes
Wet space: No
Addition: No
Conversion: No

13 Floor 2 - Primary Bath

Dimensions: 10'9" x 10'5"
Area: 95 sq. ft
Counted as living area: Yes

Heated: Yes
Finished: Yes
Enclosed: Yes
Contiguous: Yes
Permitted: Yes
Wet space: Yes
Addition: No
Conversion: No

14 Floor 2 - Hall

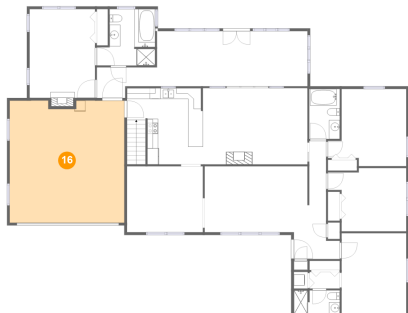
Dimensions: 5'7" x 3'1"
Area: 17 sq. ft
Counted as living area: Yes

Heated: Yes
Finished: Yes
Enclosed: Yes
Contiguous: Yes
Permitted: Yes
Wet space: No
Addition: No
Conversion: No

674 Azalea Rd,Daleville,Virginia,United States**15 Floor 2 - Bedroom**

Dimensions: 14'6" x 14'3"
Area: 174 sq. ft
Counted as living area: Yes

Heated: Yes
Finished: Yes
Enclosed: Yes
Contiguous: Yes
Permitted: Yes
Wet space: No
Addition: No
Conversion: No

16 Floor 2 - Garage

Dimensions: 21'2" x 22'7"
Area: 470 sq. ft
Counted as living area: No

Heated: No
Finished: No
Enclosed: Yes
Contiguous: Yes
Permitted: Yes
Wet space: No
Addition: No
Conversion: No

17 Floor 2 - Patio

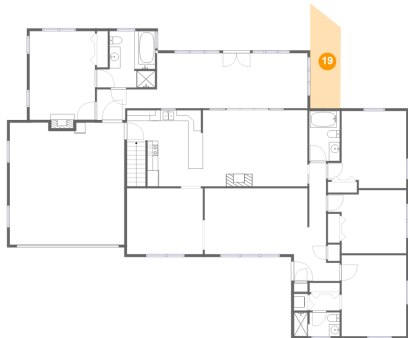
Dimensions: 28'2" x 9'5"
Area: 224 sq. ft
Counted as living area: No

Heated: No
Finished: Yes
Enclosed: No
Contiguous: Yes
Permitted: Yes
Wet space: No
Addition: No
Conversion: No

674 Azalea Rd,Daleville,Virginia,United States**18 Floor 2 - Bath**

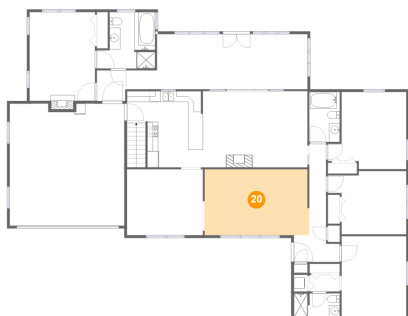
Dimensions: 5'8" x 9'3"
Area: 52 sq. ft
Counted as living area: Yes

Heated: Yes
Finished: Yes
Enclosed: Yes
Contiguous: Yes
Permitted: Yes
Wet space: Yes
Addition: No
Conversion: No

19 Floor 2 - Patio

Dimensions: 5'7" x 17'2"
Area: 97 sq. ft
Counted as living area: No

Heated: No
Finished: Yes
Enclosed: No
Contiguous: Yes
Permitted: Yes
Wet space: No
Addition: No
Conversion: No

20 Floor 2 - Living Room

Dimensions: 19'4" x 12'2"
Area: 234 sq. ft
Counted as living area: Yes

Heated: Yes
Finished: Yes
Enclosed: Yes
Contiguous: Yes
Permitted: Yes
Wet space: No
Addition: No
Conversion: No

674 Azalea Rd,Daleville,Virginia,United States

21 Floor 2 - Sunroom



Dimensions: 27'10" x 10'2"
Area: 284 sq. ft
Counted as living area: Yes

Heated: Yes
Finished: Yes
Enclosed: Yes
Contiguous: Yes
Permitted: Yes
Wet space: No
Addition: No
Conversion: No