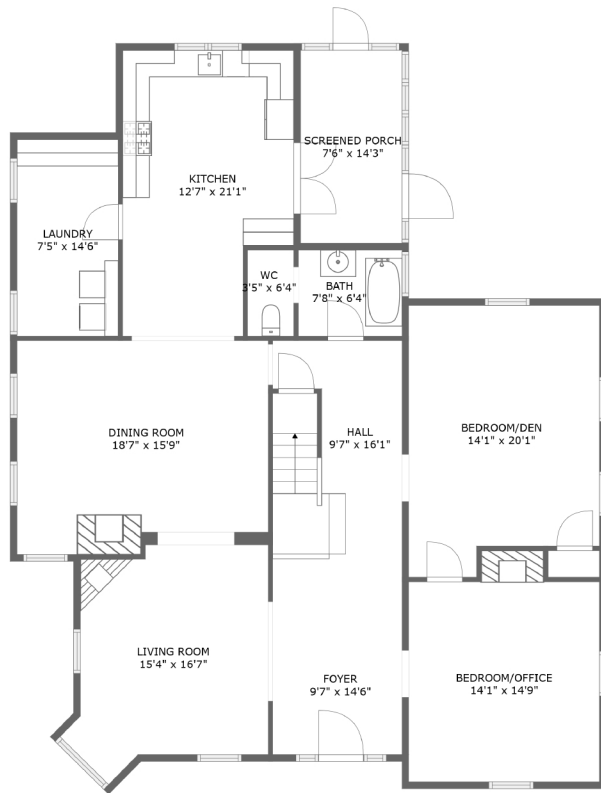
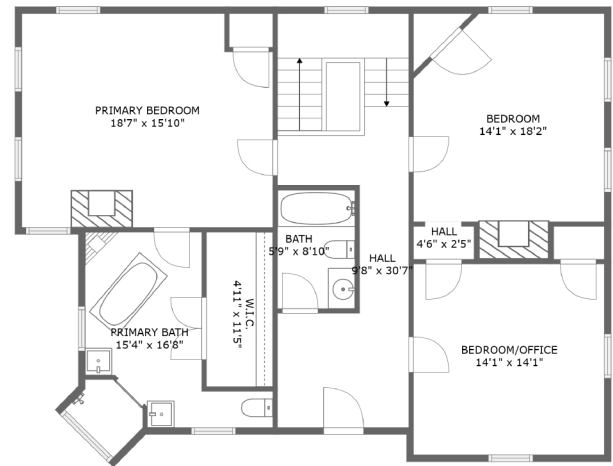


53 Born Street Northwest, Norcross, Georgia 30071, United States



FLOOR 1



FLOOR 2

Total Area: 3387 sq.ft

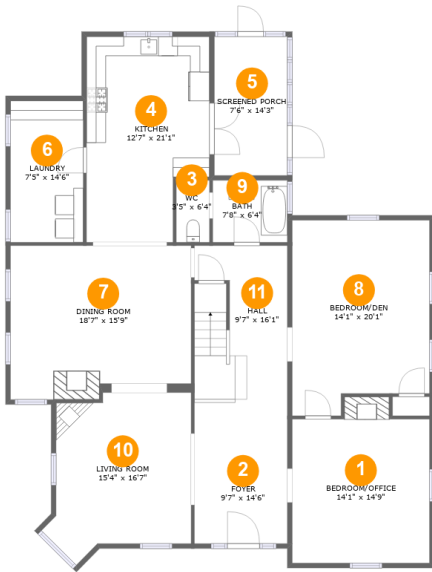
Floor 1: 1762 sq. ft, Floor 2: 1284 sq. ft

Excluded: Outdoor Porch Screen 107 sq. ft, Walls: 187 sq. ft

Property summary



53 Born Street Northwest, Norcross, Georgia 30071, United States



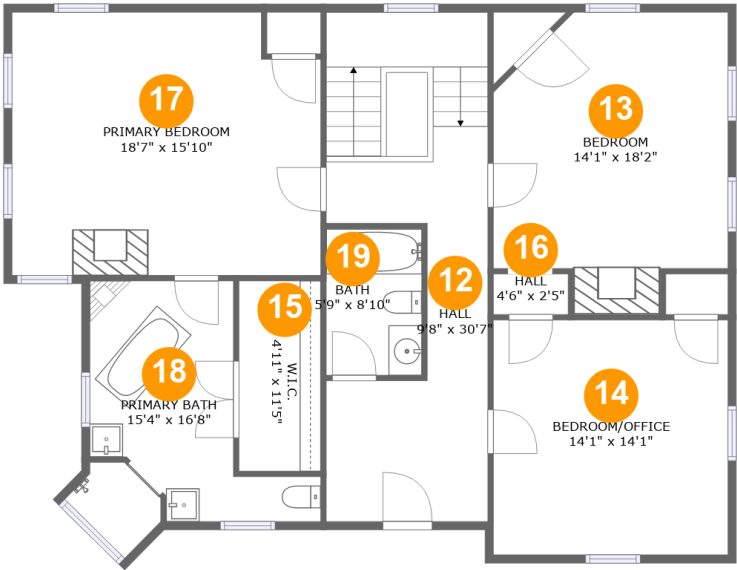
Room dimensions

Floor 1 Total:1762sqft Excluded: 107sqft

#		Max Dimensions	sqft	Included
1	BEDROOM/OFFICE	14'1" x 14'9"	219 sq. ft	Yes
2	Foyer	9'7" x 14'6"	138 sq. ft	Yes
3	WC	3'5" x 6'4"	22 sq. ft	Yes
4	Kitchen	12'7" x 21'1"	242 sq. ft	Yes
5	Screened Porch	7'6" x 14'3"	107 sq. ft	No
6	Laundry	7'5" x 14'6"	109 sq. ft	Yes
7	Dining Room	18'7" x 15'9"	278 sq. ft	Yes
8	BEDROOM/DEN	14'1" x 20'1"	262 sq. ft	Yes
9	Bath	7'8" x 6'4"	49 sq. ft	Yes
10	Living Room	15'4" x 16'7"	217 sq. ft	Yes
11	Hall	9'7" x 16'1"	151 sq. ft	Yes

Home report

53 Born Street Northwest, Norcross, Georgia 30071, United States



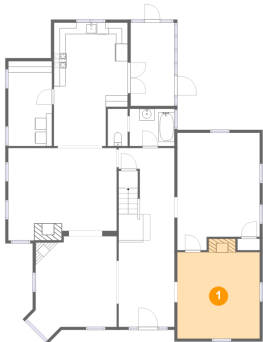
Room dimensions

Floor 2 Total:1284sqft Excluded: 0sqft

#		Max Dimensions	sqft	Included
12	Hall	9'8" x 30'7"	240 sq. ft	Yes
13	Bedroom	14'1" x 18'2"	220 sq. ft	Yes
14	BEDROOM/OFFICE	14'1" x 14'1"	199 sq. ft	Yes
15	W.I.C.	4'11" x 11'5"	56 sq. ft	Yes
16	Hall	4'6" x 2'5"	11 sq. ft	Yes
17	Primary Bedroom	18'7" x 15'10"	283 sq. ft	Yes
18	Primary Bath	15'4" x 16'8"	145 sq. ft	Yes
19	Bath	5'9" x 8'10"	50 sq. ft	Yes

53 Born Street Northwest, Norcross, Georgia 30071, United States

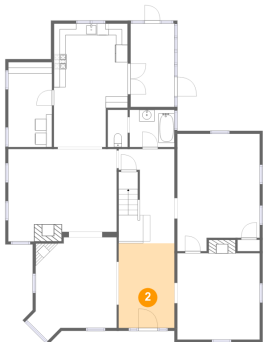
1 Floor 1 - BEDROOM/OFFICE



Max Dimensions: 14'1" x 14'9"
Calculated Area: 219 sq. ft
Included: Yes

Heated: Yes
Finished: Yes
Enclosed: Yes
Contiguous: Yes
Permitted: Yes
Wet space: No
Addition: No
Conversion: No

2 Floor 1 - Foyer



Max Dimensions: 9'7" x 14'6"
Calculated Area: 138 sq. ft
Included: Yes

Heated: Yes
Finished: Yes
Enclosed: Yes
Contiguous: Yes
Permitted: Yes
Wet space: No
Addition: No
Conversion: No

53 Born Street Northwest, Norcross, Georgia 30071, United States

3 Floor 1 - WC



Max Dimensions: 3'5" x 6'4"
Calculated Area: 22 sq. ft
Included: Yes

Heated: Yes
Finished: Yes
Enclosed: Yes
Contiguous: Yes
Permitted: Yes
Wet space: Yes
Addition: No
Conversion: No

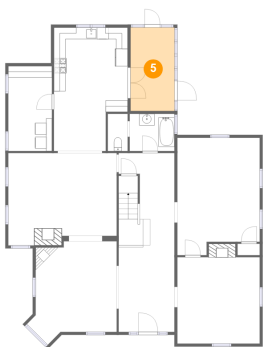
4 Floor 1 - Kitchen



Max Dimensions: 12'7" x 21'1"
Calculated Area: 242 sq. ft
Included: Yes

Heated: Yes
Finished: Yes
Enclosed: Yes
Contiguous: Yes
Permitted: Yes
Wet space: No
Addition: No
Conversion: No

5 Floor 1 - Screened Porch



Max Dimensions: 7'6" x 14'3"
Calculated Area: 107 sq. ft
Included: No

Heated: No
Finished: Yes
Enclosed: No
Contiguous: Yes
Permitted: Yes
Wet space: No
Addition: No
Conversion: No

53 Born Street Northwest, Norcross, Georgia 30071, United States

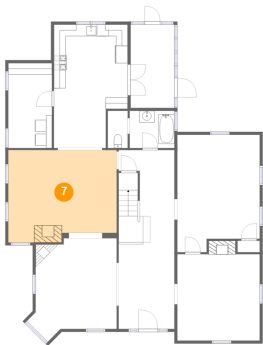
6 Floor 1 - Laundry



Max Dimensions: 7'5" x 14'6"
Calculated Area: 109 sq. ft
Included: Yes

Heated: Yes
Finished: Yes
Enclosed: Yes
Contiguous: Yes
Permitted: Yes
Wet space: No
Addition: No
Conversion: No

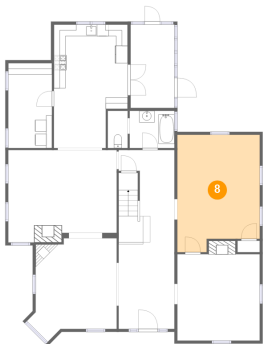
7 Floor 1 - Dining Room



Max Dimensions: 18'7" x 15'9"
Calculated Area: 278 sq. ft
Included: Yes

Heated: Yes
Finished: Yes
Enclosed: Yes
Contiguous: Yes
Permitted: Yes
Wet space: No
Addition: No
Conversion: No

8 Floor 1 - BEDROOM/DEN



Max Dimensions: 14'1" x 20'1"
Calculated Area: 262 sq. ft
Included: Yes

Heated: Yes
Finished: Yes
Enclosed: Yes
Contiguous: Yes
Permitted: Yes
Wet space: No
Addition: No
Conversion: No

53 Born Street Northwest, Norcross, Georgia 30071, United States

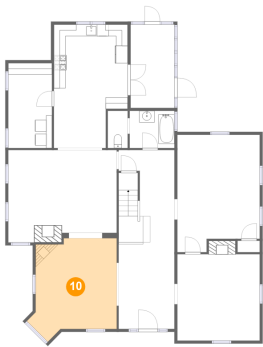
9 Floor 1 - Bath



Max Dimensions: 7'8" x 6'4"
Calculated Area: 49 sq. ft
Included: Yes

Heated: Yes
Finished: Yes
Enclosed: Yes
Contiguous: Yes
Permitted: Yes
Wet space: Yes
Addition: No
Conversion: No

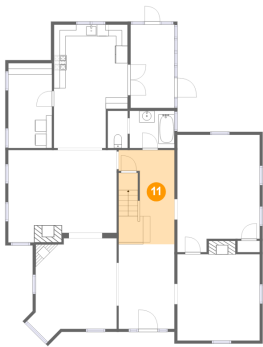
10 Floor 1 - Living Room



Max Dimensions: 15'4" x 16'7"
Calculated Area: 217 sq. ft
Included: Yes

Heated: Yes
Finished: Yes
Enclosed: Yes
Contiguous: Yes
Permitted: Yes
Wet space: No
Addition: No
Conversion: No

11 Floor 1 - Hall

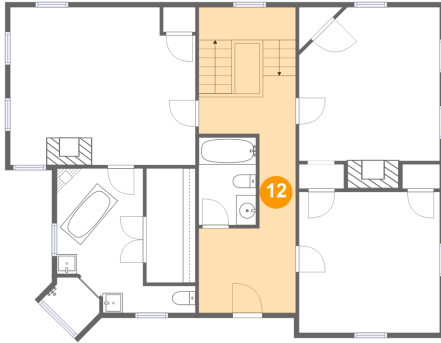


Max Dimensions: 9'7" x 16'1"
Calculated Area: 151 sq. ft
Included: Yes

Heated: Yes
Finished: Yes
Enclosed: Yes
Contiguous: Yes
Permitted: Yes
Wet space: No
Addition: No
Conversion: No

53 Born Street Northwest, Norcross, Georgia 30071, United States

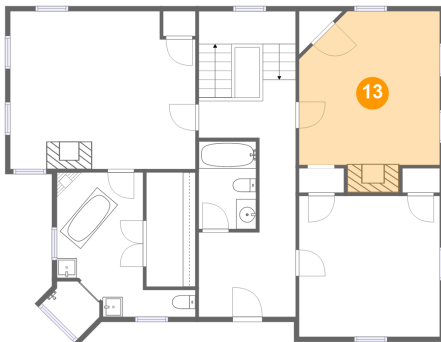
12 Floor 2 - Hall



Max Dimensions: 9'8" x 30'7"
Calculated Area: 240 sq. ft
Included: Yes

Heated: Yes
Finished: Yes
Enclosed: Yes
Contiguous: Yes
Permitted: Yes
Wet space: No
Addition: No
Conversion: No

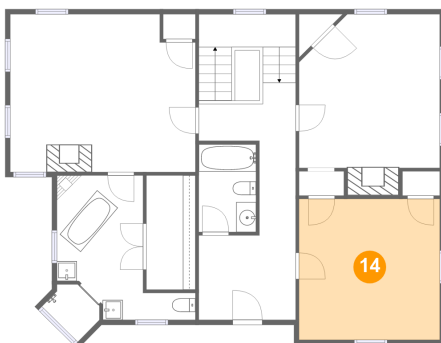
13 Floor 2 - Bedroom



Max Dimensions: 14'1" x 18'2"
Calculated Area: 220 sq. ft
Included: Yes

Heated: Yes
Finished: Yes
Enclosed: Yes
Contiguous: Yes
Permitted: Yes
Wet space: No
Addition: No
Conversion: No

14 Floor 2 - BEDROOM/OFFICE

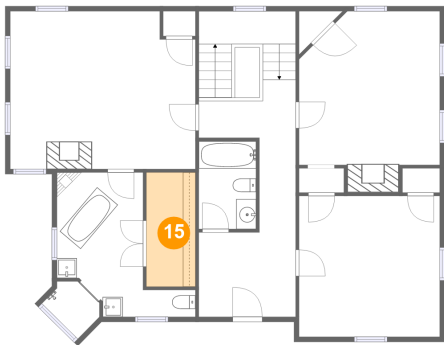


Max Dimensions: 14'1" x 14'1"
Calculated Area: 199 sq. ft
Included: Yes

Heated: Yes
Finished: Yes
Enclosed: Yes
Contiguous: Yes
Permitted: Yes
Wet space: No
Addition: No
Conversion: No

53 Born Street Northwest, Norcross, Georgia 30071, United States

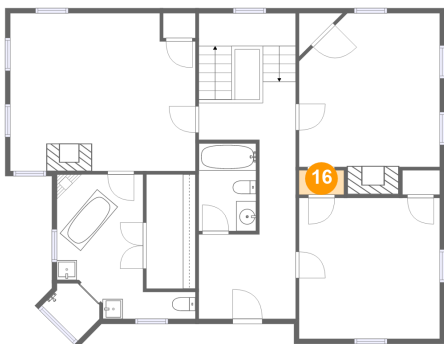
15 Floor 2 - W.I.C.



Max Dimensions: 4'11" x 11'5"
Calculated Area: 56 sq. ft
Included: Yes

Heated: Yes
Finished: Yes
Enclosed: Yes
Contiguous: Yes
Permitted: Yes
Wet space: No
Addition: No
Conversion: No

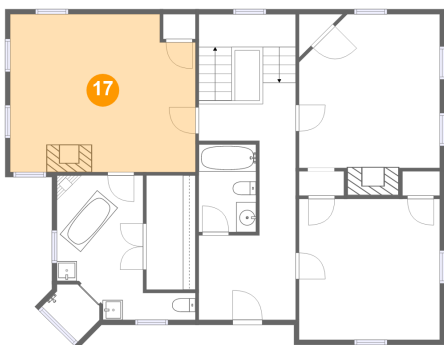
16 Floor 2 - Hall



Max Dimensions: 4'6" x 2'5"
Calculated Area: 11 sq. ft
Included: Yes

Heated: Yes
Finished: Yes
Enclosed: Yes
Contiguous: Yes
Permitted: Yes
Wet space: No
Addition: No
Conversion: No

17 Floor 2 - Primary Bedroom

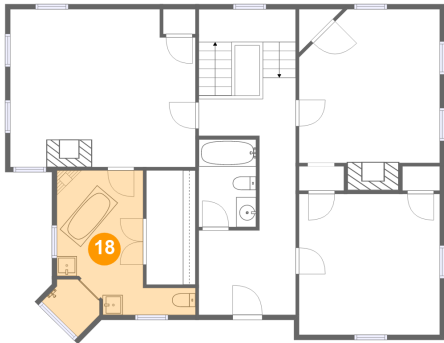


Max Dimensions: 18'7" x 15'10"
Calculated Area: 283 sq. ft
Included: Yes

Heated: Yes
Finished: Yes
Enclosed: Yes
Contiguous: Yes
Permitted: Yes
Wet space: No
Addition: No
Conversion: No

53 Born Street Northwest, Norcross, Georgia 30071, United States

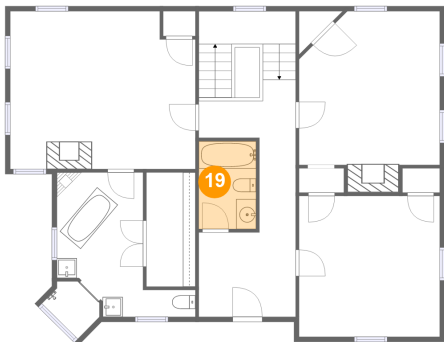
18 Floor 2 - Primary Bath



Max Dimensions: 15'4" x 16'8"
Calculated Area: 145 sq. ft
Included: Yes

Heated: Yes
Finished: Yes
Enclosed: Yes
Contiguous: Yes
Permitted: Yes
Wet space: Yes
Addition: No
Conversion: No

19 Floor 2 - Bath



Max Dimensions: 5'9" x 8'10"
Calculated Area: 50 sq. ft
Included: Yes

Heated: Yes
Finished: Yes
Enclosed: Yes
Contiguous: Yes
Permitted: Yes
Wet space: Yes
Addition: No
Conversion: No