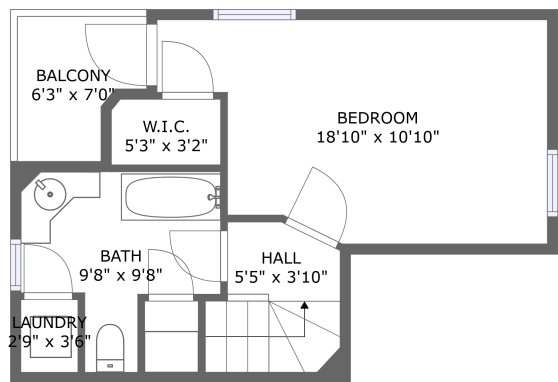
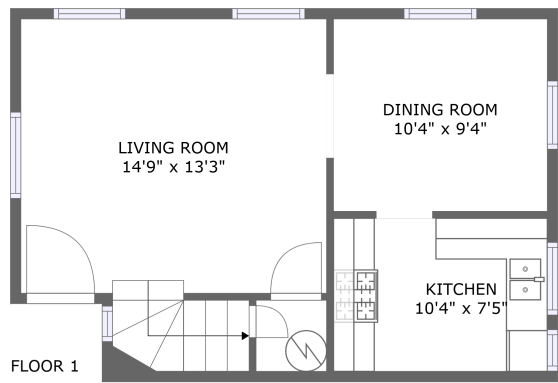


Home report

1643 1/2 Carmona Ave, Los Angeles, CA, US



FLOOR 2



FLOOR 1

Total Area: 747 sq. ft

Floor 1: 416 sq. ft, Floor 2: 331 sq. ft

Excluded: Balcony 36 sq. ft, Walls: 0 sq. ft

Property summary

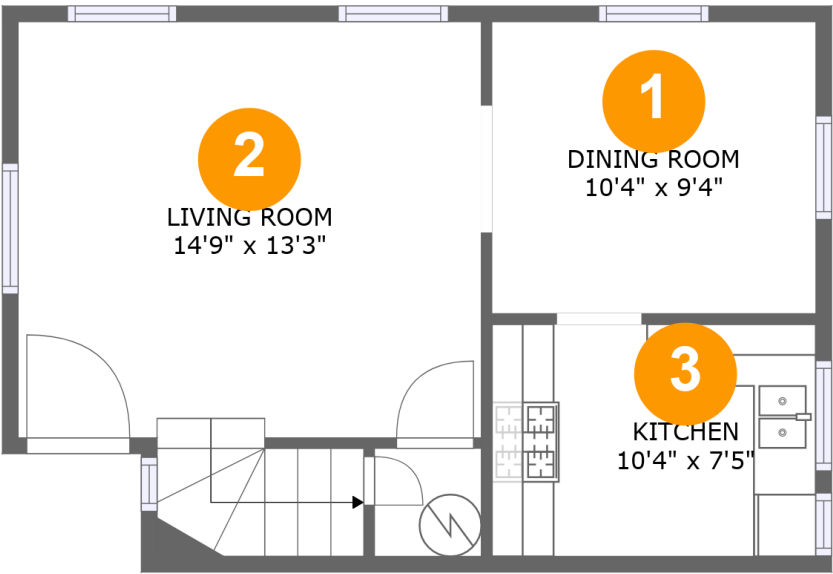
 **2** Floors

 **1** Bedrooms

 **1** Bathrooms

Home report

1643 1/2 Carmona Ave,Los Angeles,CA,US



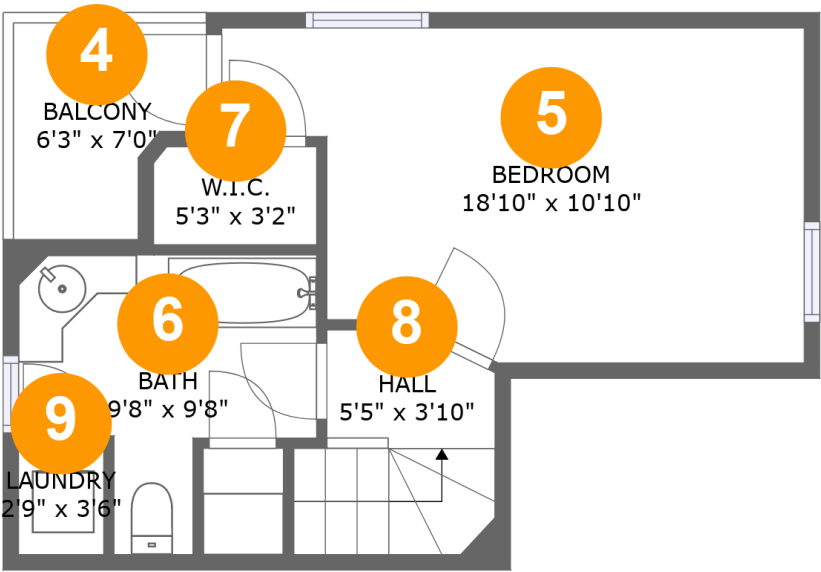
Room dimensions

Floor 1 Total:416sqft Excluded: 0sqft

#		Max Dimensions	sqft	Included
1	Dining Room	10'4" x 9'4"	96 sq. ft	Yes
2	Living Room	14'9" x 13'3"	219 sq. ft	Yes
3	Kitchen	10'4" x 7'5"	76 sq. ft	Yes

Home report

1643 1/2 Carmona Ave,Los Angeles,CA,US

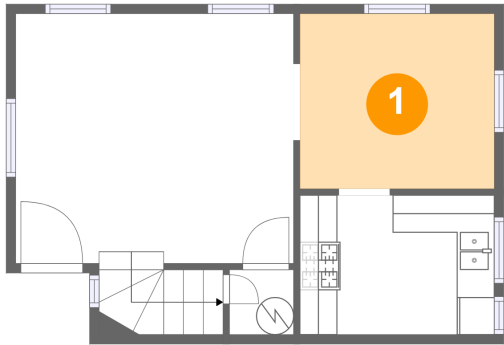


Room dimensions

Floor 2 Total:331sqft Excluded: 36sqft

#		Max Dimensions	sqft	Included
4	Balcony	6'3" x 7'0"	36 sq. ft	No
5	Bedroom	18'10" x 10'10"	173 sq. ft	Yes
6	Bath	9'8" x 9'8"	66 sq. ft	Yes
7	W.I.C.	5'3" x 3'2"	17 sq. ft	Yes
8	Hall	5'5" x 3'10"	41 sq. ft	Yes
9	Laundry	2'9" x 3'6"	10 sq. ft	Yes

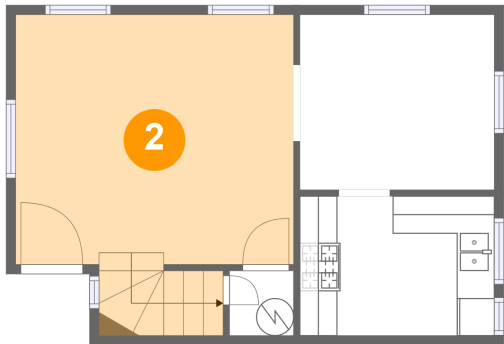
1 Floor 1 - Dining Room



Max Dimensions: 10'4" x 9'4"
Calculated Area: 96 sq. ft
Included: Yes

Heated: Yes
Finished: Yes
Enclosed: Yes
Contiguous: Yes
Permitted: Yes
Wet space: No
Addition: No
Conversion: No

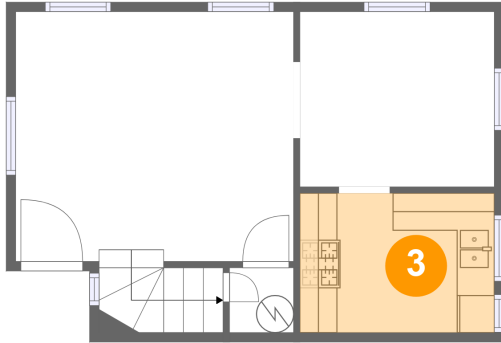
2 Floor 1 - Living Room



Max Dimensions: 14'9" x 13'3"
Calculated Area: 219 sq. ft
Included: Yes

Heated: Yes
Finished: Yes
Enclosed: Yes
Contiguous: Yes
Permitted: Yes
Wet space: No
Addition: No
Conversion: No

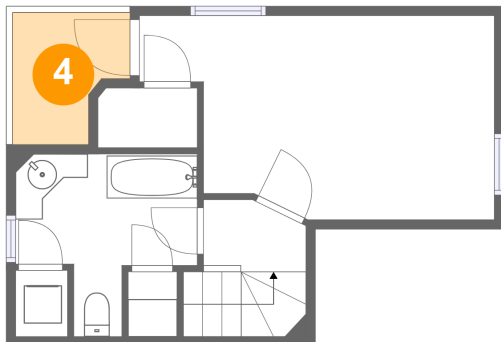
3 Floor 1 - Kitchen



Max Dimensions: 10'4" x 7'5"
Calculated Area: 76 sq. ft
Included: Yes

Heated: Yes
Finished: Yes
Enclosed: Yes
Contiguous: Yes
Permitted: Yes
Wet space: No
Addition: No
Conversion: No

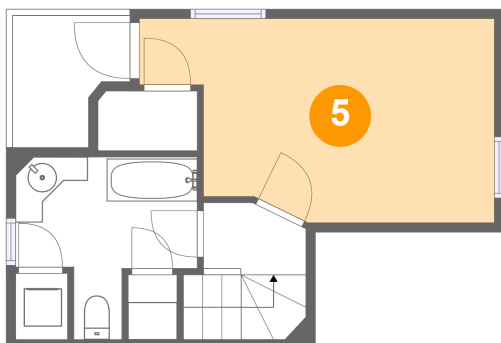
4 Floor 2 - Balcony



Max Dimensions: 6'3" x 7'0"
Calculated Area: 36 sq. ft
Included: No

Heated: No
Finished: Yes
Enclosed: No
Contiguous: Yes
Permitted: Yes
Wet space: No
Addition: No
Conversion: No

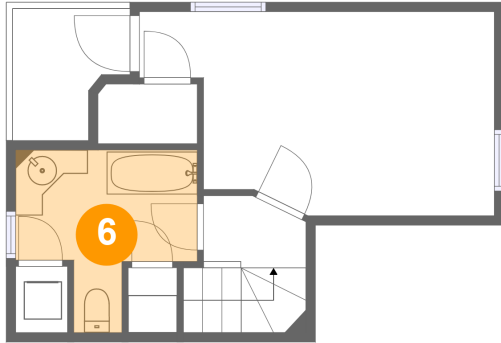
5 Floor 2 - Bedroom



Max Dimensions: 18'10" x 10'10"
Calculated Area: 173 sq. ft
Included: Yes

Heated: Yes
Finished: Yes
Enclosed: Yes
Contiguous: Yes
Permitted: Yes
Wet space: No
Addition: No
Conversion: No

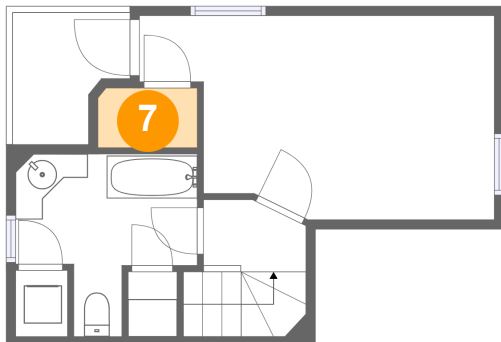
6 Floor 2 - Bath



Max Dimensions: 9'8" x 9'8"
Calculated Area: 66 sq. ft
Included: Yes

Heated: Yes
Finished: Yes
Enclosed: Yes
Contiguous: Yes
Permitted: Yes
Wet space: Yes
Addition: No
Conversion: No

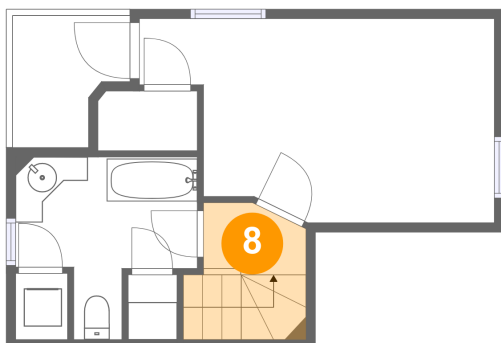
7 Floor 2 - W.I.C.



Max Dimensions: 5'3" x 3'2"
Calculated Area: 17 sq. ft
Included: Yes

Heated: Yes
Finished: Yes
Enclosed: Yes
Contiguous: Yes
Permitted: Yes
Wet space: No
Addition: No
Conversion: No

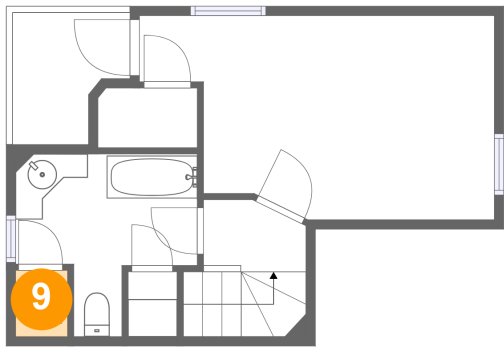
8 Floor 2 - Hall



Max Dimensions: 5'5" x 3'10"
Calculated Area: 41 sq. ft
Included: Yes

Heated: Yes
Finished: Yes
Enclosed: Yes
Contiguous: Yes
Permitted: Yes
Wet space: No
Addition: No
Conversion: No

9 Floor 2 - Laundry



Max Dimensions: 2'9" x 3'6"
Calculated Area: 10 sq. ft
Included: Yes

Heated: Yes
Finished: Yes
Enclosed: Yes
Contiguous: Yes
Permitted: Yes
Wet space: No
Addition: No
Conversion: No