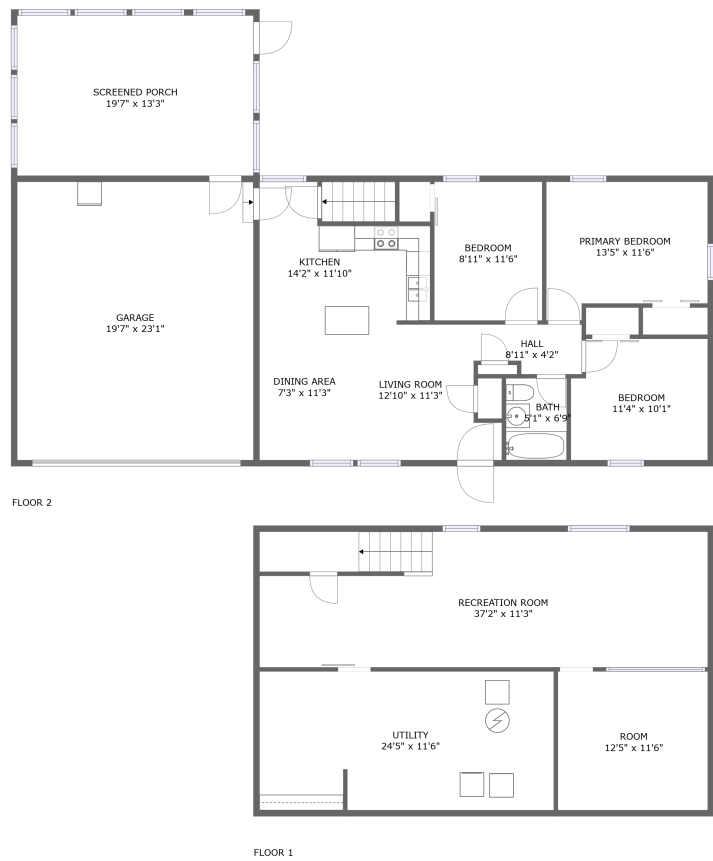





56702 Raider Drive, Elkhart, Elkhart County, Indiana,
United States, 46516





Property summary


 **1** Garages


 **3** Bedrooms

 **1** Bathrooms

 **0** Half baths

 **2** Floors

 **1,540** Gross living area sqft

 **2,607** Total sqft

56702 Raider Drive, Elkhart, Elkhart County, Indiana,
United States, 46516

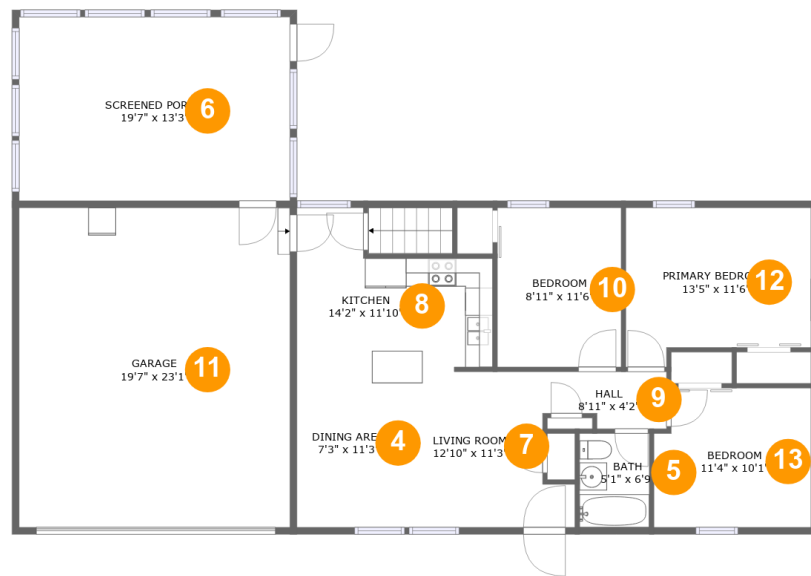


Room dimensions

Floor 1 Total sqft: 920 Living area: 621

#		Dimensions	sqft	Counted as living area
1	Room	12'5" x 11'6"	143 sq. ft	Yes
2	Recreation Room	37'2" x 11'3"	387 sq. ft	Yes
3	Utility	24'5" x 11'6"	280 sq. ft	No

**56702 Raider Drive, Elkhart, Elkhart County, Indiana,
United States, 46516**



Room dimensions

Floor 2

Total sqft: 1687 Living area: 919

#		Dimensions	sqft	Counted as living area
4	Dining Area	7'3" x 11'3"	82 sq. ft	Yes
5	Bath	5'1" x 6'9"	34 sq. ft	Yes
6	Screened Porch	19'7" x 13'3"	260 sq. ft	No
7	Living Room	12'10" x 11'3"	125 sq. ft	Yes
8	Kitchen	14'2" x 11'10"	133 sq. ft	Yes
9	Hall	8'11" x 4'2"	33 sq. ft	Yes
10	Bedroom	8'11" x 11'6"	103 sq. ft	Yes
11	Garage	19'7" x 23'1"	452 sq. ft	No
12	Primary Bedroom	13'5" x 11'6"	139 sq. ft	Yes
13	Bedroom	11'4" x 10'1"	110 sq. ft	Yes

56702 Raider Drive, Elkhart, Elkhart County, Indiana,
United States, 46516

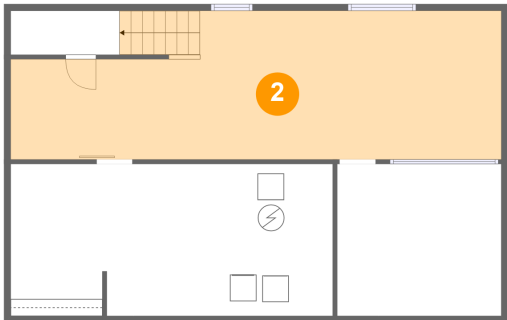
1 Floor 1 - Room



Dimensions: 12'5" x 11'6"
Area: 143 sq. ft
Counted as living area: Yes

Heated: Yes
Finished: Yes
Enclosed: Yes
Contiguous: Yes
Permitted: Yes
Wet space: No
Addition: No
Conversion: No

2 Floor 1 - Recreation Room



Dimensions: 37'2" x 11'3"
Area: 387 sq. ft
Counted as living area: Yes

Heated: Yes
Finished: Yes
Enclosed: Yes
Contiguous: Yes
Permitted: Yes
Wet space: No
Addition: No
Conversion: No

56702 Raider Drive, Elkhart, Elkhart County, Indiana,
United States, 46516

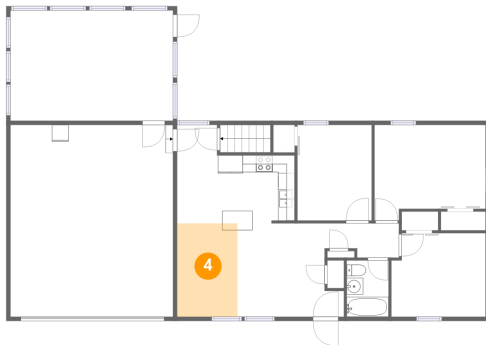
3 Floor 1 - Utility



Dimensions: 24'5" x 11'6"
Area: 280 sq. ft
Counted as living area: No

Heated: Yes
Finished: No
Enclosed: Yes
Contiguous: Yes
Permitted: Yes
Wet space: No
Addition: No
Conversion: No

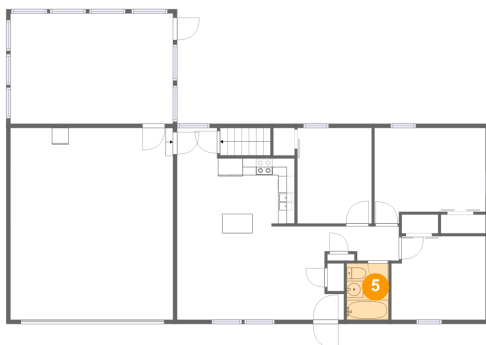
4 Floor 2 - Dining Area



Dimensions: 7'3" x 11'3"
Area: 82 sq. ft
Counted as living area: Yes

Heated: Yes
Finished: Yes
Enclosed: Yes
Contiguous: Yes
Permitted: Yes
Wet space: No
Addition: No
Conversion: No

5 Floor 2 - Bath

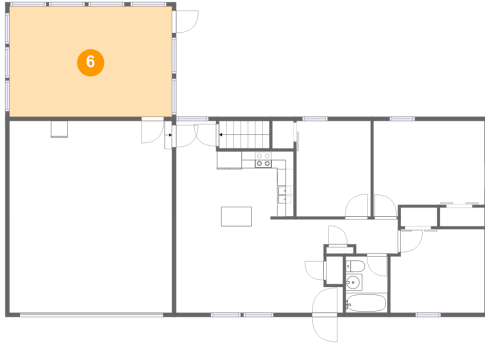


Dimensions: 5'1" x 6'9"
Area: 34 sq. ft
Counted as living area: Yes

Heated: Yes
Finished: Yes
Enclosed: Yes
Contiguous: Yes
Permitted: Yes
Wet space: Yes
Addition: No
Conversion: No

56702 Raider Drive, Elkhart, Elkhart County, Indiana,
United States, 46516

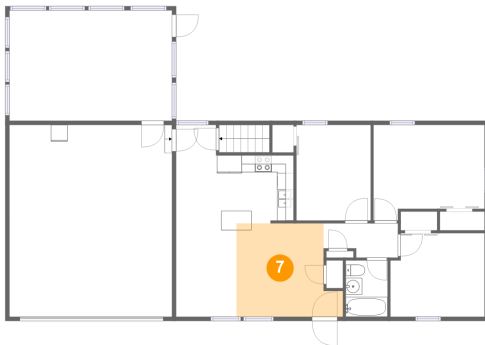
6 Floor 2 - Screened Porch



Dimensions: 19'7" x 13'3"
Area: 260 sq. ft
Counted as living area: No

Heated: No
Finished: Yes
Enclosed: No
Contiguous: Yes
Permitted: Yes
Wet space: No
Addition: No
Conversion: No

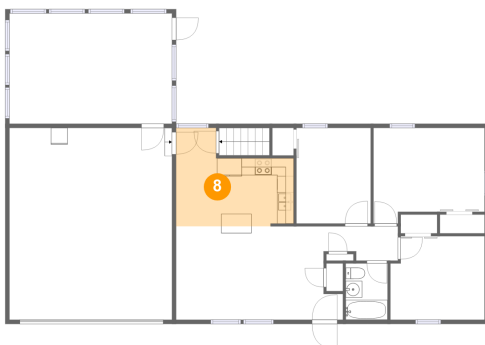
7 Floor 2 - Living Room



Dimensions: 12'10" x 11'3"
Area: 125 sq. ft
Counted as living area: Yes

Heated: Yes
Finished: Yes
Enclosed: Yes
Contiguous: Yes
Permitted: Yes
Wet space: No
Addition: No
Conversion: No

8 Floor 2 - Kitchen

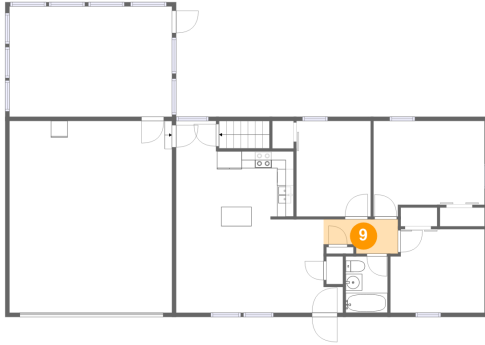


Dimensions: 14'2" x 11'10"
Area: 133 sq. ft
Counted as living area: Yes

Heated: Yes
Finished: Yes
Enclosed: Yes
Contiguous: Yes
Permitted: Yes
Wet space: No
Addition: No
Conversion: No

56702 Raider Drive, Elkhart, Elkhart County, Indiana,
United States, 46516

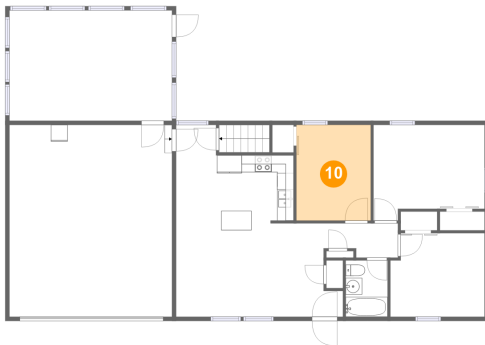
9 Floor 2 - Hall



Dimensions: 8'11" x 4'2"
Area: 33 sq. ft
Counted as living area: Yes

Heated: Yes
Finished: Yes
Enclosed: Yes
Contiguous: Yes
Permitted: Yes
Wet space: No
Addition: No
Conversion: No

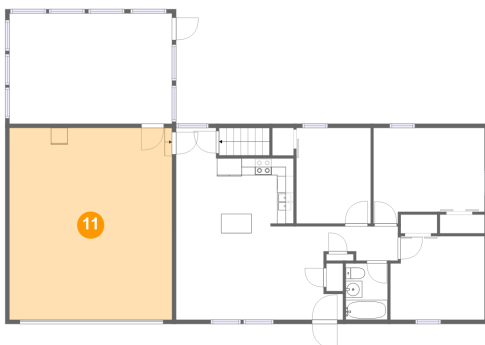
10 Floor 2 - Bedroom



Dimensions: 8'11" x 11'6"
Area: 103 sq. ft
Counted as living area: Yes

Heated: Yes
Finished: Yes
Enclosed: Yes
Contiguous: Yes
Permitted: Yes
Wet space: No
Addition: No
Conversion: No

11 Floor 2 - Garage

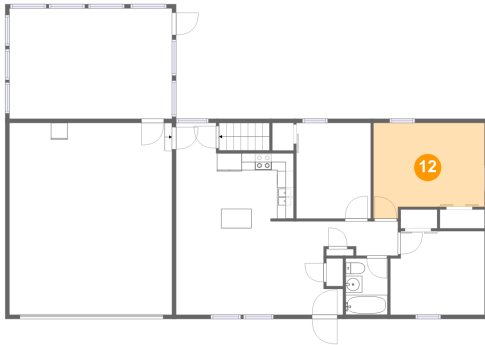


Dimensions: 19'7" x 23'1"
Area: 452 sq. ft
Counted as living area: No

Heated: No
Finished: No
Enclosed: Yes
Contiguous: Yes
Permitted: Yes
Wet space: No
Addition: No
Conversion: No

**56702 Raider Drive, Elkhart, Elkhart County, Indiana,
United States, 46516**

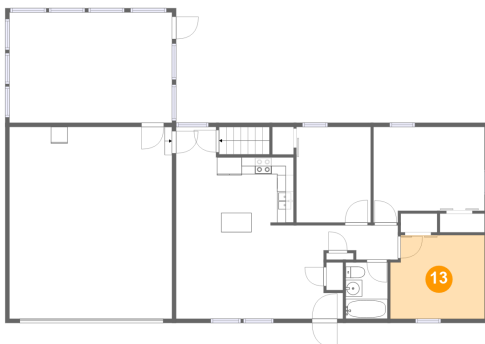
12 Floor 2 - Primary Bedroom



Dimensions: 13'5" x 11'6"
Area: 139 sq. ft
Counted as living area: Yes

Heated: Yes
Finished: Yes
Enclosed: Yes
Contiguous: Yes
Permitted: Yes
Wet space: No
Addition: No
Conversion: No

13 Floor 2 - Bedroom



Dimensions: 11'4" x 10'1"
Area: 110 sq. ft
Counted as living area: Yes

Heated: Yes
Finished: Yes
Enclosed: Yes
Contiguous: Yes
Permitted: Yes
Wet space: No
Addition: No
Conversion: No