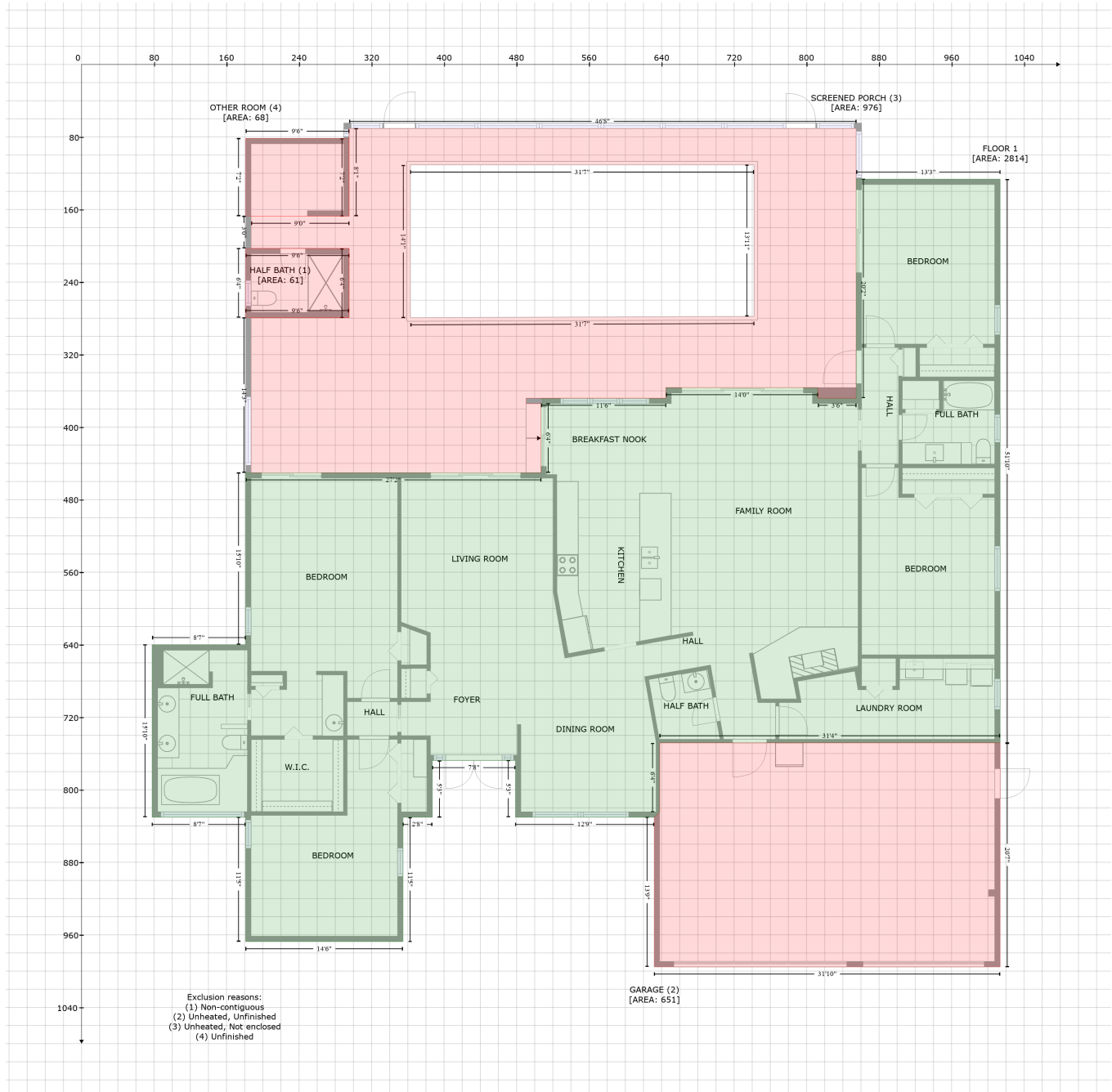


3327 Sandy Ridge Drive, Landmark, Clearwater, Pinellas County, Florida, United States, 33761

Gross Living Area: 2814 sq. ft



Space	Area (sq. ft)	Calculation
FLOOR 1 (Living area)	2814	Coordinate Polygon Area Algorithm using inches $-((1013.6 + 1013.6) * (126.5 - 748.3) + (1013.6 + 637.9) * (748.3 - 748.3) + (637.9 + 637.9) * (748.3 - 824.3) + (637.9 + 631.9) * (824.3 - 830.3) + (631.9 + 478.8) * (830.3 - 830.3) + (478.8 + 478.8) * (830.3 - 767.7) + (478.8 + 387.1) * (767.7 - 767.7) + (387.1 + 387.1) * (767.7 - 830.3) + (387.1 + 354.6) * (830.3 - 830.3) + (354.6 + 354.6) * (830.3 - 967.5) + (354.6 + 181.1) * (967.5 - 967.5) + (181.1 + 181.1) * (967.5 - 830.3) + (181.1 + 77.9) * (830.3 - 830.3) + (77.9 + 77.9) * (830.3 - 640) + (77.9 + 181.1) * (640 - 640) + (181.1 + 181.1) * (640 - 450.3) + (181.1 + 507) * (450.3 - 450.3) + (507 + 507) * (450.3 - 374.1) + (507 + 509.9) * (374.1 - 371) + (509.9 + 507) * (371 - 371))$

3327 Sandy Ridge Drive, Landmark, Clearwater, Pinellas County, Florida, United States, 33761

Gross Living Area: 2814 sq. ft

Space	Area (sq. ft)	Calculation <small>Coordinate Polygon Area Algorithm using inches</small>
HALF BATH (Non-living area)	61	$(371 - 368.1) + (507 + 644.7) * (368.1 - 368.1) + (644.7 + 644.7) * (368.1 - 356.4) + (644.7 + 812.4) * (356.4 - 356.4) + (812.4 + 812.4) * (356.4 - 368.1) + (812.4 + 854.8) * (368.1 - 368.1) + (854.8 + 854.8) * (368.1 - 126.5) + (854.8 + 1013.6) * (126.5 - 126.5) * 0.5 * 0.00694$
GARAGE (Non-living area)	651	$-((1013.6 + 1013.6) * (748.3 - 995.3) + (1013.6 + 631.9) * (995.3 - 995.3) + (631.9 + 631.9) * (995.3 - 830.3) + (631.9 + 637.9) * (830.3 - 824.3) + (637.9 + 637.9) * (824.3 - 748.3) + (637.9 + 1013.6) * (748.3 - 748.3)) * 0.5 * 0.00694$
SCREENED PORCH (Non-living area)	976	$-((854.8 + 854.8) * (70.6 - 368.1) + (854.8 + 812.4) * (368.1 - 368.1) + (812.4 + 812.4) * (368.1 - 356.4) + (812.4 + 644.7) * (356.4 - 356.4) + (644.7 + 644.7) * (356.4 - 368.1) + (644.7 + 490.6) * (368.1 - 368.1) + (490.6 + 490.6) * (368.1 - 374.1) + (490.6 + 507) * (374.1 - 374.1) + (507 + 507) * (374.1 - 450.3) + (507 + 187.1) * (450.3 - 450.3) + (187.1 + 187.1) * (450.3 - 279.3) + (187.1 + 295.2) * (279.3 - 279.3) + (295.2 + 295.2) * (279.3 - 202.9) + (295.2 + 187.1) * (202.9 - 202.9) + (187.1 + 187.1) * (202.9 - 167.3) + (187.1 + 295.2) * (167.3 - 167.3) + (295.2 + 295.2) * (167.3 - 70.6) + (295.2 + 854.8) * (70.6 - 70.6)) * 0.5 * 0.00694 + -((742 + 362.9) * (110.8 - 110.8) + (362.9 + 362.9) * (110.8 - 279.3) + (362.9 + 742) * (279.3 - 277.9) + (742 + 742) * (277.9 - 110.8)) * 0.5 * 0.00694$
OTHER ROOM (Non-living area)	68	$-((295.2 + 295.2) * (81.5 - 167.3) + (295.2 + 181.1) * (167.3 - 167.3) + (181.1 + 181.1) * (167.3 - 81.5) + (181.1 + 295.2) * (81.5 - 81.5)) * 0.5 * 0.00694$