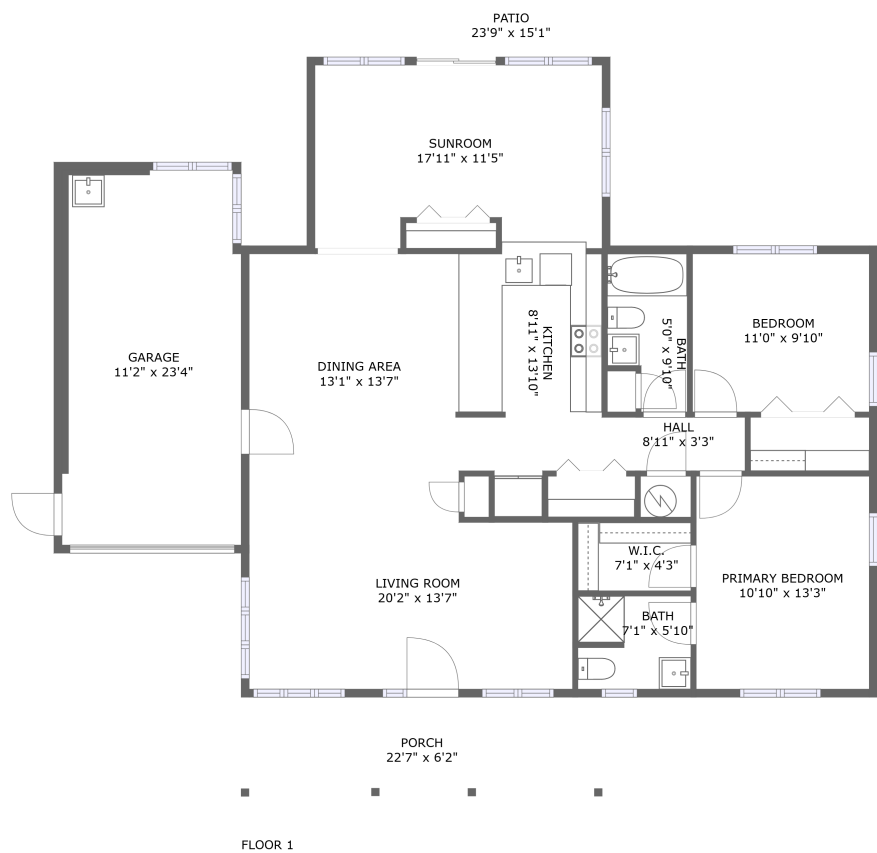


Home report

8757 Bent Mountain Road, Roanoke, Virginia 24018, United States



Total Area: 1340 sq. ft

Floor 1: 1340 sq. ft

Excluded: Outdoor Porch 140 sq. ft, Outdoor Patio 133 sq. ft, Garage 285 sq. ft

Property summary

1 Floors

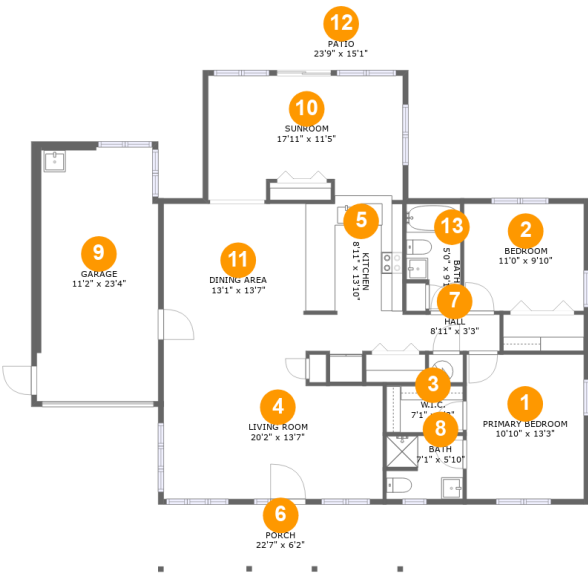
2 Bedrooms

2 Bathrooms

1 Garages

Home report

8757 Bent Mountain Road, Roanoke, Virginia 24018, United States



Room dimensions

Floor 1

Total:1340sqft

Excluded: 558sqft

#		Max Dimensions	sqft	Included
1	Primary Bedroom	10'10" x 13'3"	143 sq. ft	Yes
2	Bedroom	11'0" x 9'10"	109 sq. ft	Yes
3	W.I.C.	7'1" x 4'3"	30 sq. ft	Yes
4	Living Room	20'2" x 13'7"	252 sq. ft	Yes
5	Kitchen	8'11" x 13'10"	123 sq. ft	Yes
6	Porch	22'7" x 6'2"	140 sq. ft	No
7	Hall	8'11" x 3'3"	29 sq. ft	Yes
8	Bath	7'1" x 5'10"	40 sq. ft	Yes
9	Garage	11'2" x 23'4"	259 sq. ft	No
10	Sunroom	17'11" x 11'5"	193 sq. ft	Yes
11	Dining Area	13'1" x 13'7"	177 sq. ft	Yes

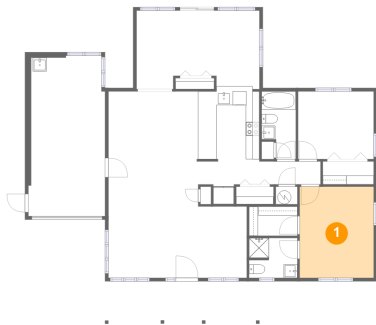
Home report

8757 Bent Mountain Road, Roanoke, Virginia 24018, United States

#		Max Dimensions	sqft	Included
12	Patio	23'9" x 15'1"	133 sq. ft	No
13	Bath	5'0" x 9'10"	43 sq. ft	Yes

8757 Bent Mountain Road, Roanoke, Virginia 24018, United States

1 Floor 1 - Primary Bedroom



Max Dimensions: 10'10" x 13'3"
Calculated Area: 143 sq. ft
Included: Yes

Heated: Yes
Finished: Yes
Enclosed: Yes
Contiguous: Yes
Permitted: Yes
Wet space: No
Addition: No
Conversion: No

2 Floor 1 - Bedroom

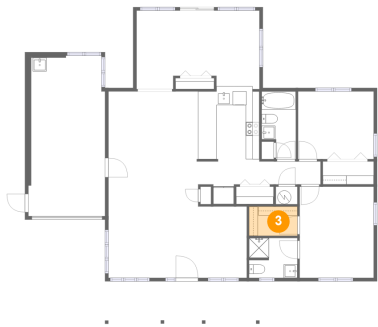


Max Dimensions: 11'0" x 9'10"
Calculated Area: 109 sq. ft
Included: Yes

Heated: Yes
Finished: Yes
Enclosed: Yes
Contiguous: Yes
Permitted: Yes
Wet space: No
Addition: No
Conversion: No

8757 Bent Mountain Road, Roanoke, Virginia 24018, United States

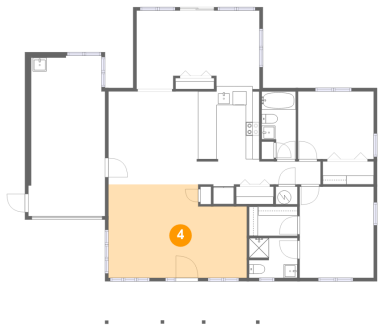
3 Floor 1 - W.I.C.



Max Dimensions: 7'1" x 4'3"
Calculated Area: 30 sq. ft
Included: Yes

Heated: Yes
Finished: Yes
Enclosed: Yes
Contiguous: Yes
Permitted: Yes
Wet space: No
Addition: No
Conversion: No

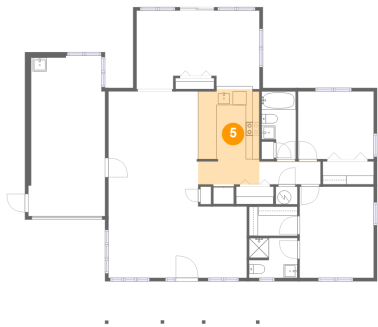
4 Floor 1 - Living Room



Max Dimensions: 20'2" x 13'7"
Calculated Area: 252 sq. ft
Included: Yes

Heated: Yes
Finished: Yes
Enclosed: Yes
Contiguous: Yes
Permitted: Yes
Wet space: No
Addition: No
Conversion: No

5 Floor 1 - Kitchen

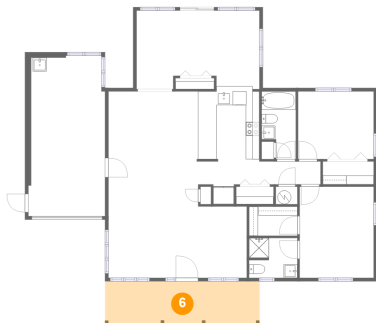


Max Dimensions: 8'11" x 13'10"
Calculated Area: 123 sq. ft
Included: Yes

Heated: Yes
Finished: Yes
Enclosed: Yes
Contiguous: Yes
Permitted: Yes
Wet space: No
Addition: No
Conversion: No

8757 Bent Mountain Road, Roanoke, Virginia 24018, United States

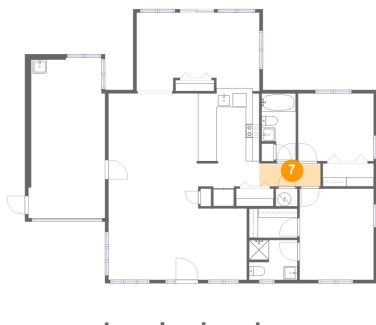
6 Floor 1 - Porch



Max Dimensions: 22'7" x 6'2"
Calculated Area: 140 sq. ft
Included: No

Heated: No
Finished: No
Enclosed: No
Contiguous: Yes
Permitted: Yes
Wet space: No
Addition: No
Conversion: No

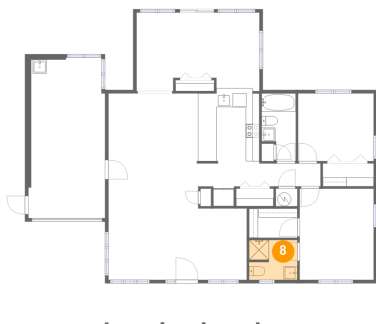
7 Floor 1 - Hall



Max Dimensions: 8'11" x 3'3"
Calculated Area: 29 sq. ft
Included: Yes

Heated: Yes
Finished: Yes
Enclosed: Yes
Contiguous: Yes
Permitted: Yes
Wet space: No
Addition: No
Conversion: No

8 Floor 1 - Bath

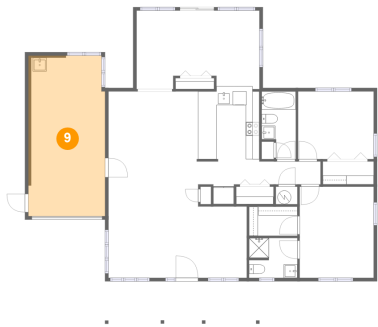


Max Dimensions: 7'1" x 5'10"
Calculated Area: 40 sq. ft
Included: Yes

Heated: Yes
Finished: Yes
Enclosed: Yes
Contiguous: Yes
Permitted: Yes
Wet space: Yes
Addition: No
Conversion: No

8757 Bent Mountain Road, Roanoke, Virginia 24018, United States

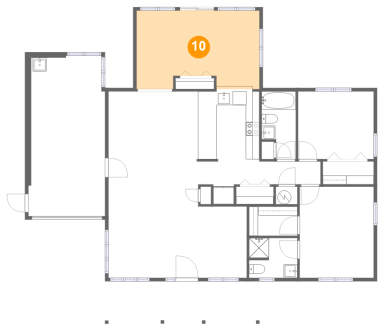
9 Floor 1 - Garage



Max Dimensions: 11'2" x 23'4"
Calculated Area: 259 sq. ft
Included: No

Heated: No
Finished: No
Enclosed: Yes
Contiguous: Yes
Permitted: Yes
Wet space: No
Addition: No
Conversion: No

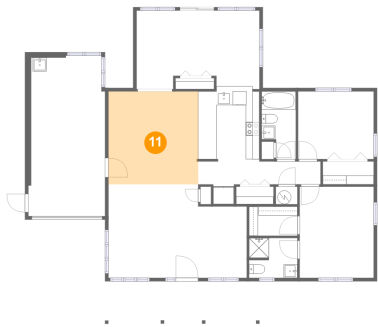
10 Floor 1 - Sunroom



Max Dimensions: 17'11" x 11'5"
Calculated Area: 193 sq. ft
Included: Yes

Heated: Yes
Finished: Yes
Enclosed: Yes
Contiguous: Yes
Permitted: Yes
Wet space: No
Addition: No
Conversion: No

11 Floor 1 - Dining Area

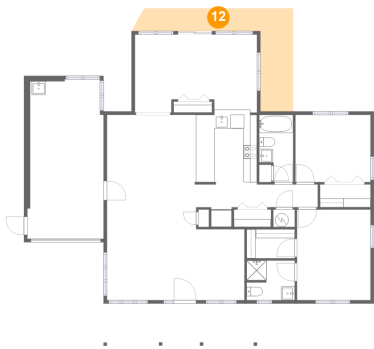


Max Dimensions: 13'1" x 13'7"
Calculated Area: 177 sq. ft
Included: Yes

Heated: Yes
Finished: Yes
Enclosed: Yes
Contiguous: Yes
Permitted: Yes
Wet space: No
Addition: No
Conversion: No

8757 Bent Mountain Road, Roanoke, Virginia 24018, United States

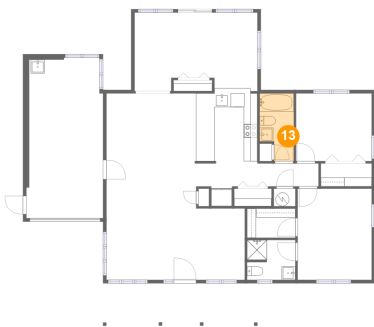
12 Floor 1 - Patio



Max Dimensions: 23'9" x 15'1"
Calculated Area: 133 sq. ft
Included: No

Heated: No
Finished: No
Enclosed: No
Contiguous: Yes
Permitted: Yes
Wet space: No
Addition: No
Conversion: No

13 Floor 1 - Bath



Max Dimensions: 5'0" x 9'10"
Calculated Area: 43 sq. ft
Included: Yes

Heated: Yes
Finished: Yes
Enclosed: Yes
Contiguous: Yes
Permitted: Yes
Wet space: Yes
Addition: No
Conversion: No