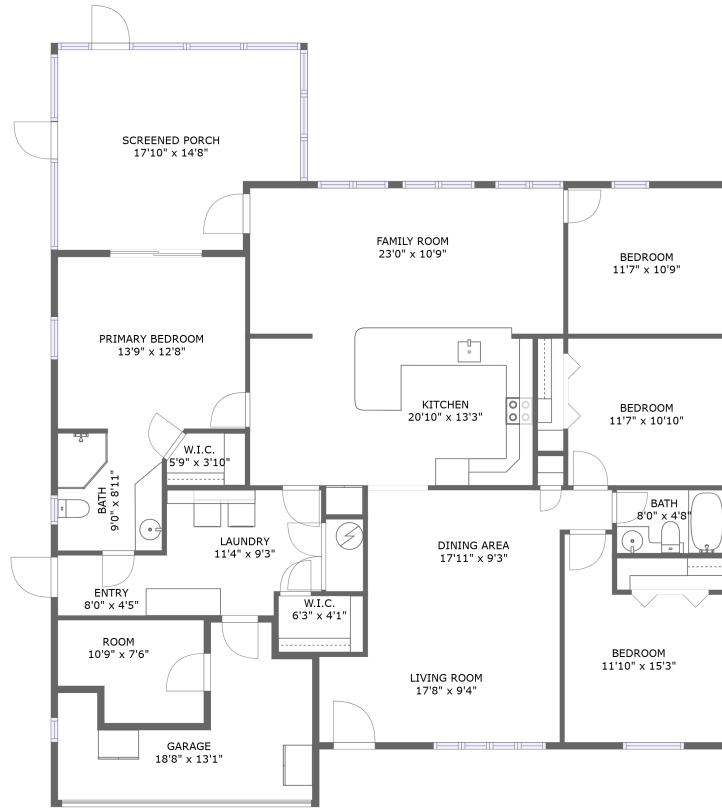


# 8182 129th Lane, Boca Ciega Ridge, Seminole, Pinellas County, Florida, United States, 33776



FLOOR 1

## Property Summary



1 floors



4 bedrooms



2 bathrooms



2,360 total sqft

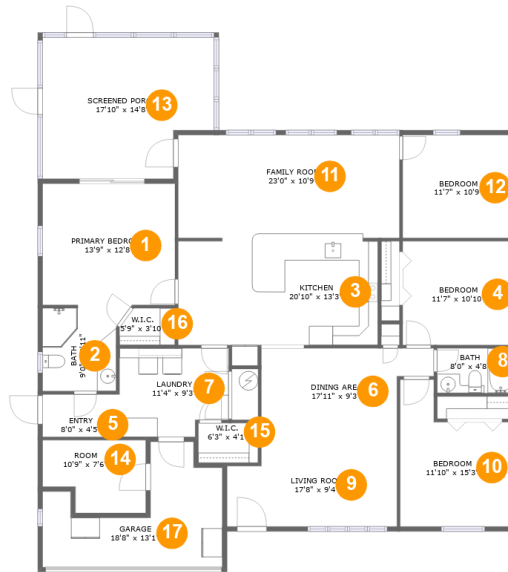


1 garages



1,827 Gross Living Area sqft

**8182 129th Lane, Boca Ciega Ridge, Seminole, Pinellas County, Florida, United States, 33776**



**Room Dimensions**

**Floor 1**

**Total sqft: 2360**

**Living area: 1827**

#	Room name	Dimensions	Area (sqft)	Counted as Living Area
1	Primary Bedroom	13'9" x 12'8"	174 sq. ft	Yes
2	Bath	9'0" x 8'11"	69 sq. ft	Yes
3	Kitchen	20'10" x 13'3"	235 sq. ft	Yes
4	Bedroom	11'7" x 10'10"	125 sq. ft	Yes
5	Entry	8'0" x 4'5"	35 sq. ft	Yes
6	Dining Area	17'11" x 9'3"	141 sq. ft	Yes
7	Laundry	11'4" x 9'3"	98 sq. ft	Yes
8	Bath	8'0" x 4'8"	37 sq. ft	Yes
9	Living Room	17'8" x 9'4"	154 sq. ft	Yes
10	Bedroom	11'10" x 15'3"	144 sq. ft	Yes
11	Family Room	23'0" x 10'9"	247 sq. ft	Yes

Scan captured on Wed, 29 May 2024 12:44:53 GMT

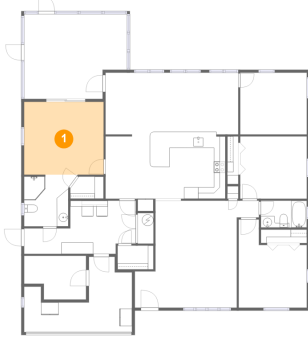
Information is calculated by CubiCasa technology; deemed highly reliable but not guaranteed.

**8182 129th Lane, Boca Ciega Ridge, Seminole,  
Pinellas County, Florida, United States, 33776**

#	Room name	Dimensions	Area (sqft)	Counted as Living Area
12	Bedroom	11'7" x 10'9"	124 sq. ft	Yes
13	Screened Porch	17'10" x 14'8"	241 sq. ft	No
14	Room	10'9" x 7'6"	72 sq. ft	No
15	W.i.c.	6'3" x 4'1"	26 sq. ft	Yes
16	W.i.c.	5'9" x 3'10"	21 sq. ft	Yes
17	Garage	18'8" x 13'1"	155 sq. ft	No

# 8182 129th Lane, Boca Ciega Ridge, Seminole, Pinellas County, Florida, United States, 33776

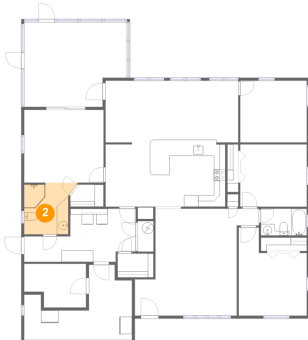
## 1 Floor 1 - Primary Bedroom



**Dimensions:** 13'9" x 12'8"  
**Area:** 174 sq. ft  
**Counted as Living Area:**  
Yes

**Heated:** Yes  
**Finished:** Yes  
**Enclosed:** Yes  
**Contiguous:**  
Yes  
**Permitted:** Yes  
**Wet Space:** No  
**Addition:** No  
**Conversion:** No

## 2 Floor 1 - Bath

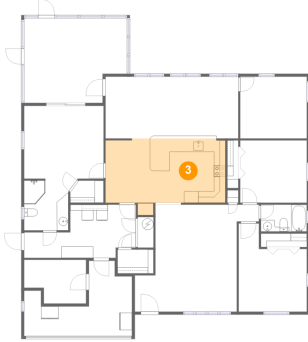


**Dimensions:** 9'0" x 8'11"  
**Area:** 69 sq. ft  
**Counted as Living Area:**  
Yes

**Heated:** Yes  
**Finished:** Yes  
**Enclosed:** Yes  
**Contiguous:**  
Yes  
**Permitted:** Yes  
**Wet Space:** Yes  
**Addition:** No  
**Conversion:** No

# 8182 129th Lane, Boca Ciega Ridge, Seminole, Pinellas County, Florida, United States, 33776

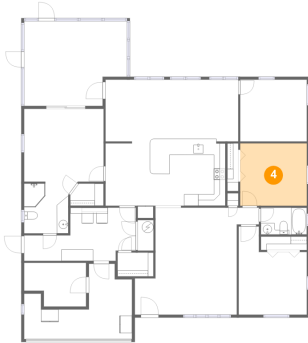
## 3 Floor 1 - Kitchen



Dimensions: 20'10" x 13'3"  
Area: 235 sq. ft  
Counted as Living Area:  
Yes

Heated: Yes  
Finished: Yes  
Enclosed: Yes  
Contiguous:  
Yes  
Permitted: Yes  
Wet Space: No  
Addition: No  
Conversion: No

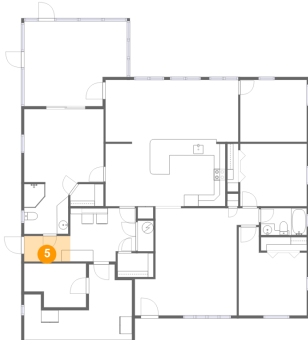
## 4 Floor 1 - Bedroom



Dimensions: 11'7" x 10'10"  
Area: 125 sq. ft  
Counted as Living Area:  
Yes

Heated: Yes  
Finished: Yes  
Enclosed: Yes  
Contiguous:  
Yes  
Permitted: Yes  
Wet Space: No  
Addition: No  
Conversion: No

## 5 Floor 1 - Entry

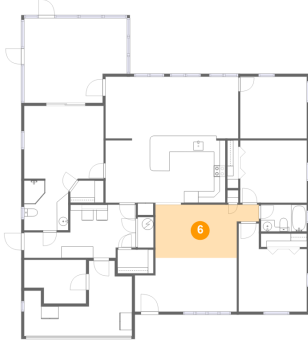


Dimensions: 8'0" x 4'5"  
Area: 35 sq. ft  
Counted as Living Area:  
Yes

Heated: Yes  
Finished: Yes  
Enclosed: Yes  
Contiguous:  
Yes  
Permitted: Yes  
Wet Space: No  
Addition: No  
Conversion: No

# 8182 129th Lane, Boca Ciega Ridge, Seminole, Pinellas County, Florida, United States, 33776

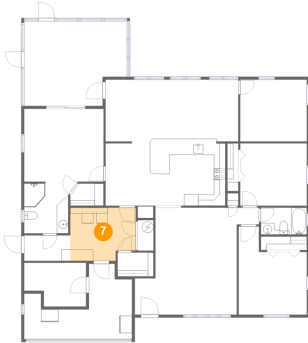
## 6 Floor 1 - Dining Area



Dimensions: 17'11" x 9'3"  
Area: 141 sq. ft  
Counted as Living Area:  
Yes

Heated: Yes  
Finished: Yes  
Enclosed: Yes  
Contiguous:  
Yes  
Permitted: Yes  
Wet Space: No  
Addition: No  
Conversion: No

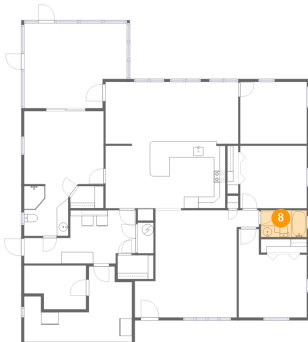
## 7 Floor 1 - Laundry



Dimensions: 11'4" x 9'3"  
Area: 98 sq. ft  
Counted as Living Area:  
Yes

Heated: Yes  
Finished: Yes  
Enclosed: Yes  
Contiguous:  
Yes  
Permitted: Yes  
Wet Space: No  
Addition: No  
Conversion: No

## 8 Floor 1 - Bath

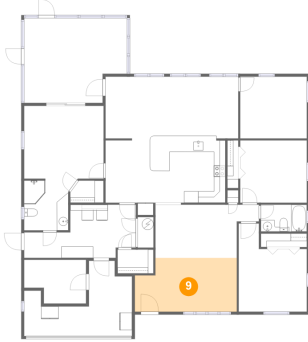


Dimensions: 8'0" x 4'8"  
Area: 37 sq. ft  
Counted as Living Area:  
Yes

Heated: Yes  
Finished: Yes  
Enclosed: Yes  
Contiguous:  
Yes  
Permitted: Yes  
Wet Space: Yes  
Addition: No  
Conversion: No

# 8182 129th Lane, Boca Ciega Ridge, Seminole, Pinellas County, Florida, United States, 33776

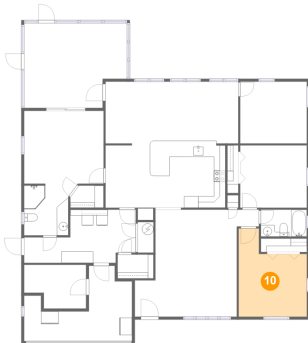
## 9 Floor 1 - Living Room



Dimensions: 17'8" x 9'4"  
Area: 154 sq. ft  
Counted as Living Area:  
Yes

Heated: Yes  
Finished: Yes  
Enclosed: Yes  
Contiguous:  
Yes  
Permitted: Yes  
Wet Space: No  
Addition: No  
Conversion: No

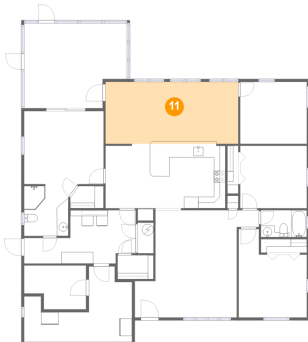
## 10 Floor 1 - Bedroom



Dimensions: 11'10" x 15'3"  
Area: 144 sq. ft  
Counted as Living Area:  
Yes

Heated: Yes  
Finished: Yes  
Enclosed: Yes  
Contiguous:  
Yes  
Permitted: Yes  
Wet Space: No  
Addition: No  
Conversion: No

## 11 Floor 1 - Family Room

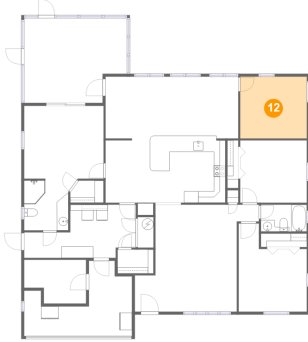


Dimensions: 23'0" x 10'9"  
Area: 247 sq. ft  
Counted as Living Area:  
Yes

Heated: Yes  
Finished: Yes  
Enclosed: Yes  
Contiguous:  
Yes  
Permitted: Yes  
Wet Space: No  
Addition: No  
Conversion: No

# 8182 129th Lane, Boca Ciega Ridge, Seminole, Pinellas County, Florida, United States, 33776

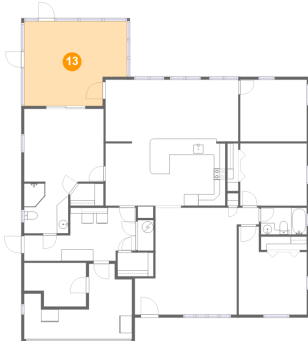
## 12 Floor 1 - Bedroom



Dimensions: 11'7" x 10'9"  
Area: 124 sq. ft  
Counted as Living Area:  
Yes

Heated: Yes  
Finished: Yes  
Enclosed: Yes  
Contiguous:  
Yes  
Permitted: Yes  
Wet Space: No  
Addition: No  
Conversion: No

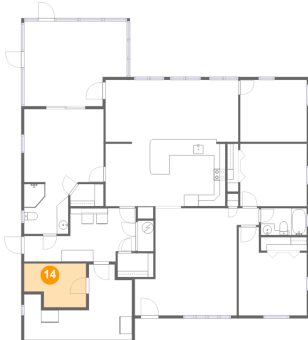
## 13 Floor 1 - Screened Porch



Dimensions: 17'10" x 14'8"  
Area: 241 sq. ft  
Counted as Living Area: No

Heated: No  
Finished: Yes  
Enclosed: No  
Contiguous: Yes  
Permitted: Yes  
Wet Space: No  
Addition: No  
Conversion: No

## 14 Floor 1 - Room



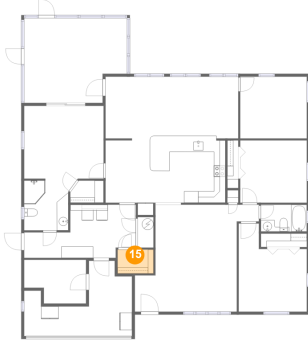
Dimensions: 10'9" x 7'6"  
Area: 72 sq. ft  
Counted as Living Area: No

Heated: No  
Finished: No  
Enclosed: Yes  
Contiguous: Yes  
Permitted: Yes  
Wet Space: No  
Addition: No  
Conversion: No



# 8182 129th Lane, Boca Ciega Ridge, Seminole, Pinellas County, Florida, United States, 33776

## 15 Floor 1 - W.i.c.



Dimensions: 6'3" x 4'1"  
Area: 26 sq. ft  
Counted as Living Area:  
Yes

Heated: Yes  
Finished: Yes  
Enclosed: Yes  
Contiguous:  
Yes  
Permitted: Yes  
Wet Space: No  
Addition: No  
Conversion: No

## 16 Floor 1 - W.i.c.



Dimensions: 5'9" x 3'10"  
Area: 21 sq. ft  
Counted as Living Area:  
Yes

Heated: Yes  
Finished: Yes  
Enclosed: Yes  
Contiguous:  
Yes  
Permitted: Yes  
Wet Space: No  
Addition: No  
Conversion: No

## 17 Floor 1 - Garage



Dimensions: 18'8" x 13'1"  
Area: 155 sq. ft  
Counted as Living Area: No

Heated: No  
Finished: No  
Enclosed: Yes  
Contiguous: Yes  
Permitted: Yes  
Wet Space: No  
Addition: No  
Conversion: No