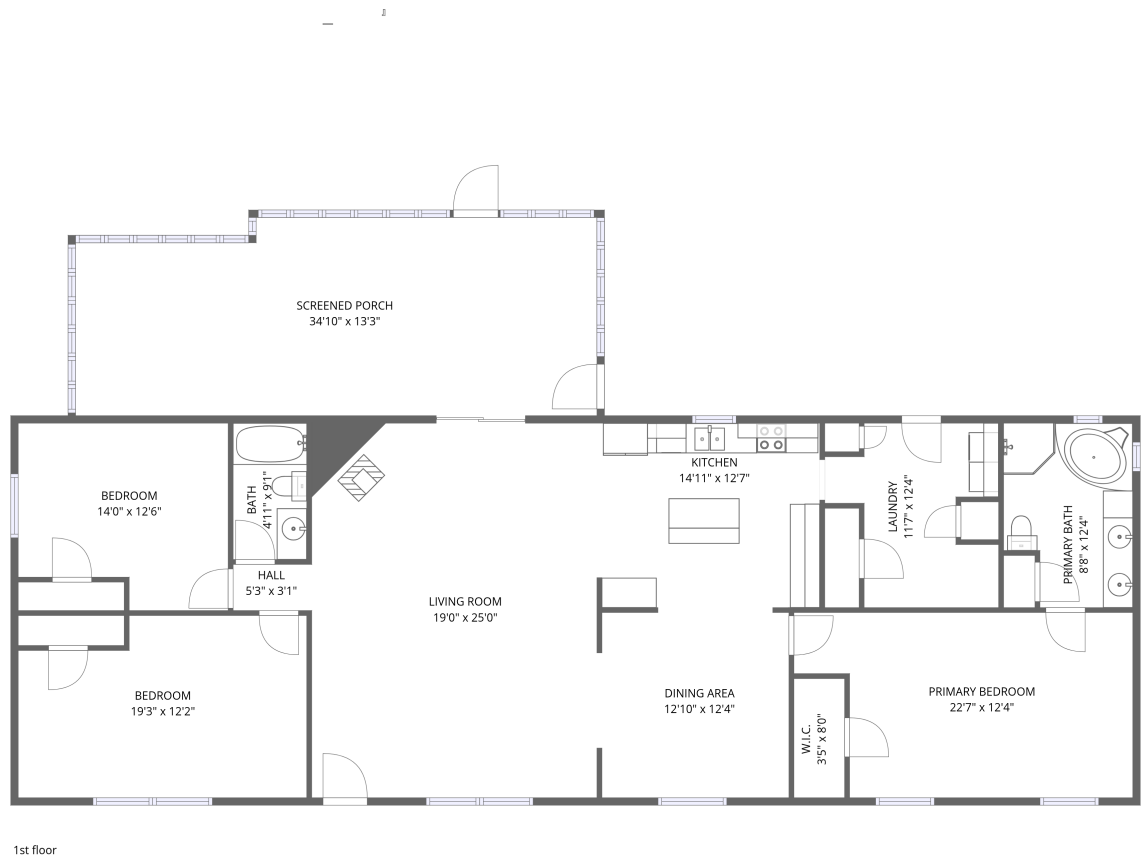


Home data report

33 Pendleton Dr,Pine Haven,WY,US



**Total Area: 1864 sq. ft**

1st Floor: 1864 sq. ft

Excluded: Screened porch 441 sq. ft, Walls: 131 sq. ft

Property summary

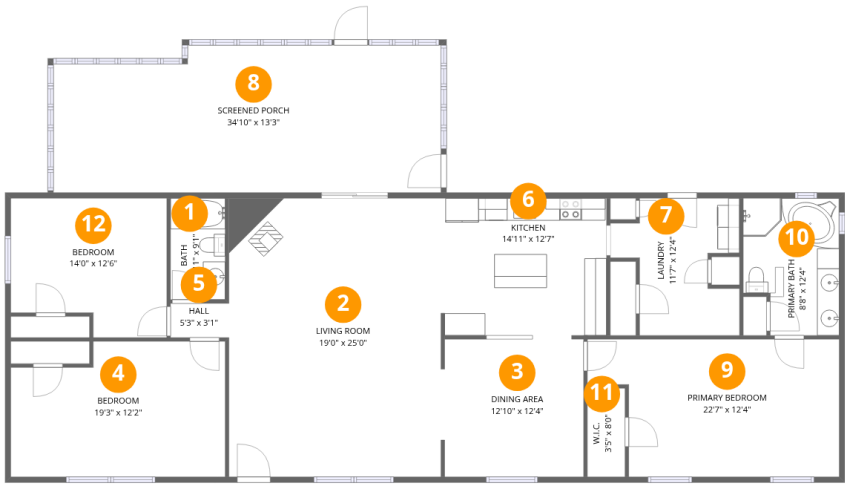
 **1** Floors

 **3** Bedrooms

 **2** Bathrooms

Home data report

33 Pendleton Dr,Pine Haven,WY,US



Room dimensions

Floor 1 Total:1864sqft Excluded: 441sqft

#		Dimensions	sqft	Counted as living area
1	Bath	4'11" x 9'1"	45 sq. ft	Yes
2	Living Room	19'0" x 25'0"	477 sq. ft	Yes
3	Dining Area	12'10" x 12'4"	157 sq. ft	Yes
4	Bedroom	19'3" x 12'2"	217 sq. ft	Yes
5	Hall	5'3" x 3'1"	16 sq. ft	Yes
6	Kitchen	14'11" x 12'7"	185 sq. ft	Yes
7	Laundry	11'7" x 12'4"	110 sq. ft	Yes
8	Screened Porch	34'10" x 13'3"	441 sq. ft	No
9	Primary Bedroom	22'7" x 12'4"	249 sq. ft	Yes
10	Primary Bath	8'8" x 12'4"	97 sq. ft	Yes
11	W.I.C.	3'5" x 8'0"	27 sq. ft	Yes

33 Pendleton Dr,Pine Haven,WY,US

#		Dimensions	sqft	Counted as living area
12	Bedroom	14'0" x 12'6"	159 sq. ft	Yes

1 Floor 1 - Bath



Dimensions: 4'11" x 9'1"  
Area: 45 sq. ft  
Counted as living area: Yes

Heated: Yes  
Finished: Yes  
Enclosed: Yes  
Contiguous: Yes  
Permitted: Yes  
Wet space: Yes  
Addition: No  
Conversion: No

2 Floor 1 - Living Room



Dimensions: 19'0" x 25'0"  
Area: 477 sq. ft  
Counted as living area: Yes

Heated: Yes  
Finished: Yes  
Enclosed: Yes  
Contiguous: Yes  
Permitted: Yes  
Wet space: No  
Addition: No  
Conversion: No

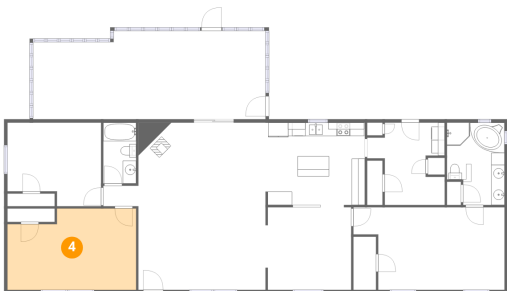
3 Floor 1 - Dining Area



Dimensions: 12'10" x 12'4"  
Area: 157 sq. ft  
Counted as living area: Yes

Heated: Yes  
Finished: Yes  
Enclosed: Yes  
Contiguous: Yes  
Permitted: Yes  
Wet space: No  
Addition: No  
Conversion: No

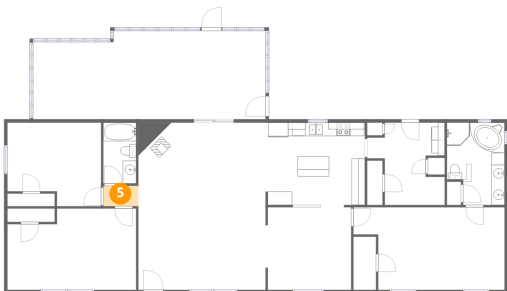
4 Floor 1 - Bedroom



Dimensions: 19'3" x 12'2"  
Area: 217 sq. ft  
Counted as living area: Yes

Heated: Yes  
Finished: Yes  
Enclosed: Yes  
Contiguous: Yes  
Permitted: Yes  
Wet space: No  
Addition: No  
Conversion: No

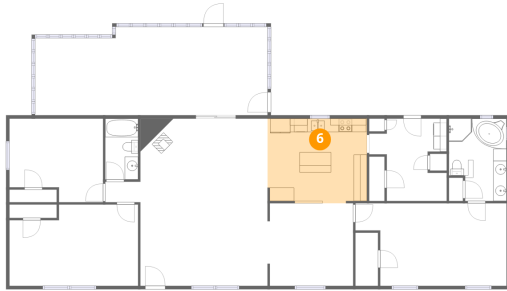
5 Floor 1 - Hall



Dimensions: 5'3" x 3'1"  
Area: 16 sq. ft  
Counted as living area: Yes

Heated: Yes  
Finished: Yes  
Enclosed: Yes  
Contiguous: Yes  
Permitted: Yes  
Wet space: No  
Addition: No  
Conversion: No

## 6 Floor 1 - Kitchen



Dimensions: 14'11" x 12'7"  
Area: 185 sq. ft  
Counted as living area: Yes

Heated: Yes  
Finished: Yes  
Enclosed: Yes  
Contiguous: Yes  
Permitted: Yes  
Wet space: No  
Addition: No  
Conversion: No

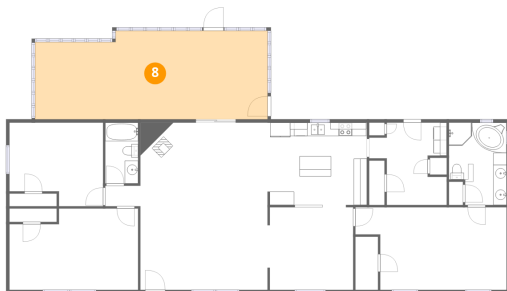
## 7 Floor 1 - Laundry



Dimensions: 11'7" x 12'4"  
Area: 110 sq. ft  
Counted as living area: Yes

Heated: Yes  
Finished: Yes  
Enclosed: Yes  
Contiguous: Yes  
Permitted: Yes  
Wet space: No  
Addition: No  
Conversion: No

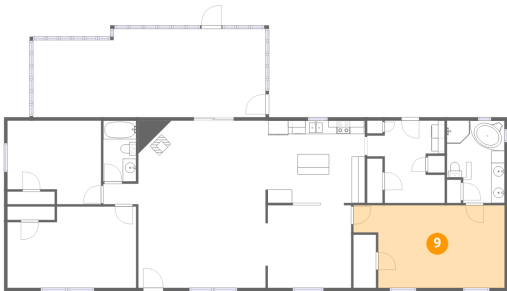
## 8 Floor 1 - Screened Porch



Dimensions: 34'10" x 13'3"  
Area: 441 sq. ft  
Counted as living area: No

Heated: No  
Finished: No  
Enclosed: No  
Contiguous: Yes  
Permitted: Yes  
Wet space: No  
Addition: No  
Conversion: No

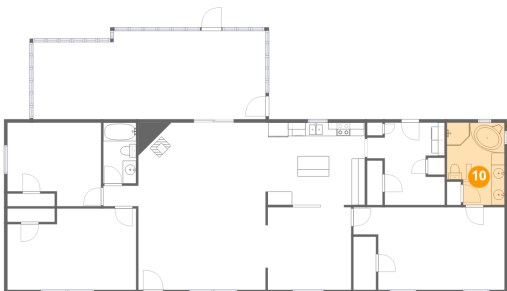
9 Floor 1 - Primary Bedroom



Dimensions: 22'7" x 12'4"  
Area: 249 sq. ft  
Counted as living area: Yes

Heated: Yes  
Finished: Yes  
Enclosed: Yes  
Contiguous: Yes  
Permitted: Yes  
Wet space: No  
Addition: No  
Conversion: No

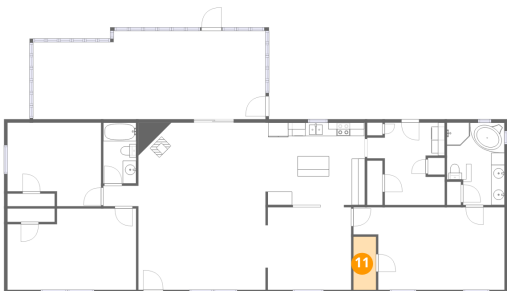
10 Floor 1 - Primary Bath



Dimensions: 8'8" x 12'4"  
Area: 97 sq. ft  
Counted as living area: Yes

Heated: Yes  
Finished: Yes  
Enclosed: Yes  
Contiguous: Yes  
Permitted: Yes  
Wet space: Yes  
Addition: No  
Conversion: No

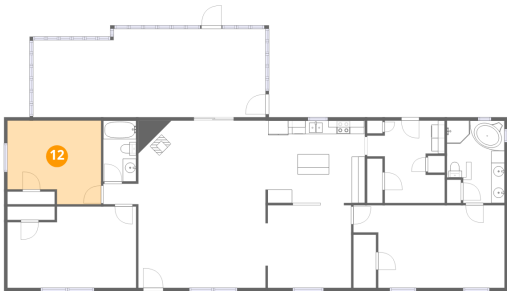
11 Floor 1 - W.I.C.



Dimensions: 3'5" x 8'0"  
Area: 27 sq. ft  
Counted as living area: Yes

Heated: Yes  
Finished: Yes  
Enclosed: Yes  
Contiguous: Yes  
Permitted: Yes  
Wet space: No  
Addition: No  
Conversion: No

12 Floor 1 - Bedroom



Dimensions: 14'0" x 12'6"  
Area: 159 sq. ft  
Counted as living area: Yes

Heated: Yes  
Finished: Yes  
Enclosed: Yes  
Contiguous: Yes  
Permitted: Yes  
Wet space: No  
Addition: No  
Conversion: No