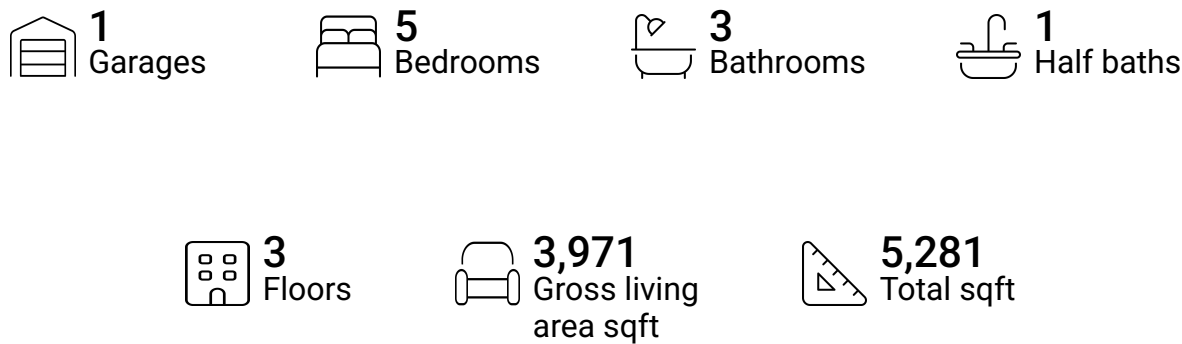


Home report

525 Scarlet Drive, Daleville, Botetourt County, Virginia, United States, 24083

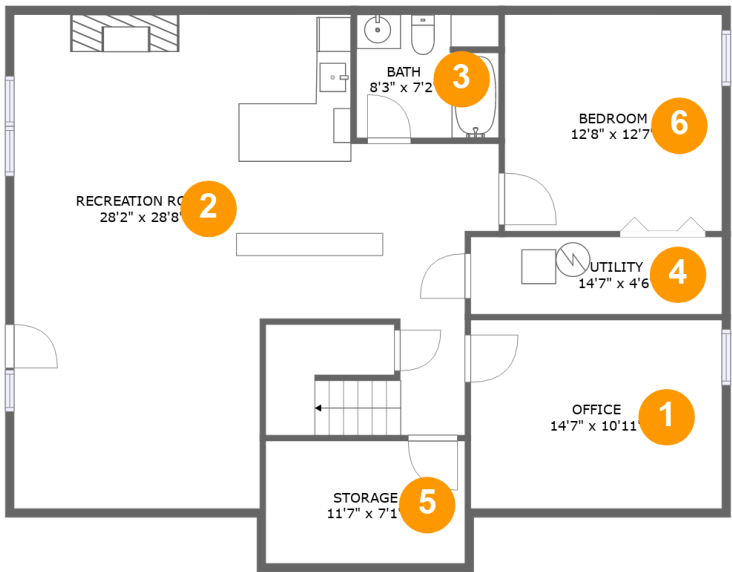


Property summary



Home report

525 Scarlet Drive, Daleville, Botetourt County, Virginia, United States, 24083



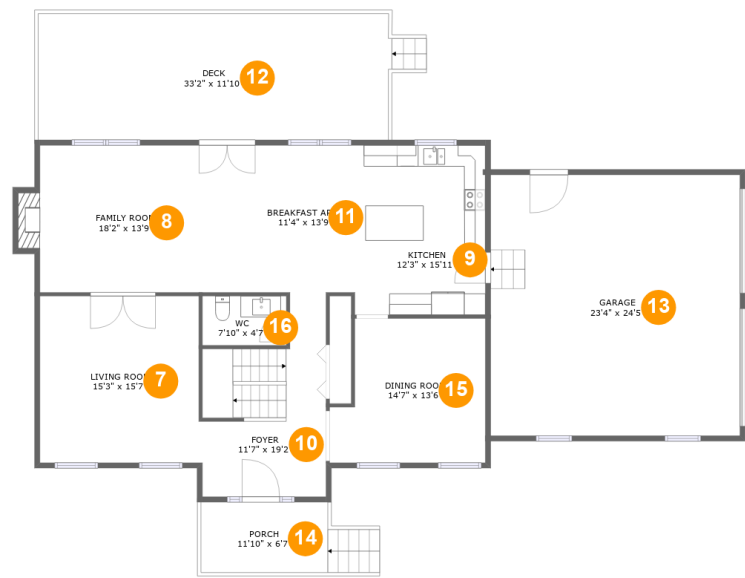
Room dimensions

Floor 1 Total sqft: 1291 Living area: 1199

#		Dimensions	sqft	Counted as living area
1	Office	14'7" x 10'11"	160 sq. ft	Yes
2	Recreation Room	28'2" x 28'8"	653 sq. ft	Yes
3	Bath	8'3" x 7'2"	58 sq. ft	Yes
4	Utility	14'7" x 4'6"	66 sq. ft	Yes
5	Storage	11'7" x 7'1"	82 sq. ft	No
6	Bedroom	12'8" x 12'7"	159 sq. ft	Yes

Home report

525 Scarlet Drive, Daleville, Botetourt County, Virginia, United States, 24083



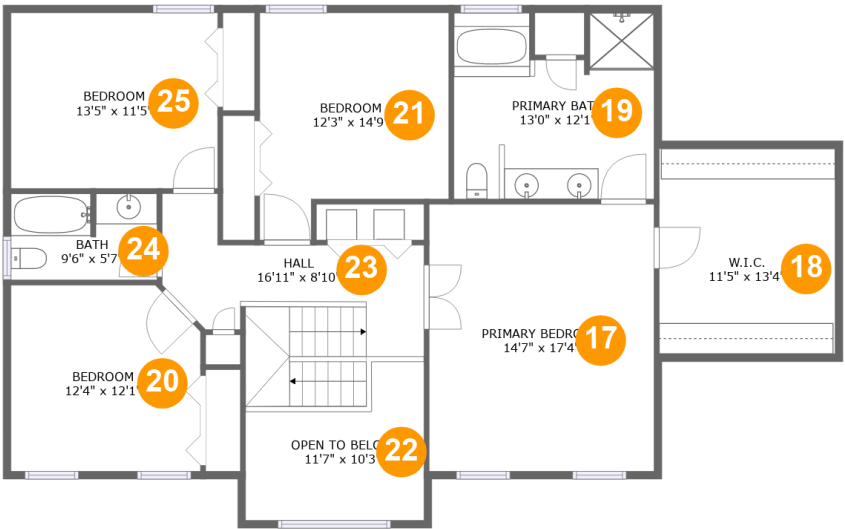
Room dimensions

Floor 2 Total sqft: 2469 Living area: 1353

#		Dimensions	sqft	Counted as living area
7	Living Room	15'3" x 15'7"	234 sq. ft	Yes
8	Family Room	18'2" x 13'9"	262 sq. ft	Yes
9	Kitchen	12'3" x 15'11"	194 sq. ft	Yes
10	Foyer	11'7" x 19'2"	179 sq. ft	Yes
11	Breakfast Area	11'4" x 13'9"	156 sq. ft	Yes
12	Deck	33'2" x 11'10"	398 sq. ft	No
13	Garage	23'4" x 24'5"	571 sq. ft	No
14	Porch	11'10" x 6'7"	98 sq. ft	No
15	Dining Room	14'7" x 13'6"	178 sq. ft	Yes
16	WC	7'10" x 4'7"	36 sq. ft	Yes

Home report

525 Scarlet Drive, Daleville, Botetourt County, Virginia, United States, 24083



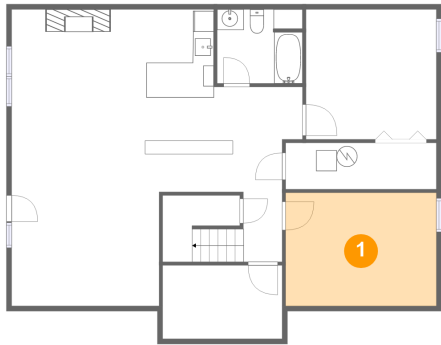
Room dimensions

Floor 3 Total sqft: 1521 Living area: 1419

#		Dimensions	sqft	Counted as living area
17	Primary Bedroom	14'7" x 17'4"	253 sq. ft	Yes
18	W.I.C.	11'5" x 13'4"	152 sq. ft	Yes
19	Primary Bath	13'0" x 12'1"	145 sq. ft	Yes
20	Bedroom	12'4" x 12'1"	144 sq. ft	Yes
21	Bedroom	12'3" x 14'9"	157 sq. ft	Yes
22	Open To Below	11'7" x 10'3"	93 sq. ft	No
23	Hall	16'11" x 8'10"	151 sq. ft	Yes
24	Bath	9'6" x 5'7"	52 sq. ft	Yes
25	Bedroom	13'5" x 11'5"	153 sq. ft	Yes

525 Scarlet Drive, Daleville, Botetourt County, Virginia, United States, 24083

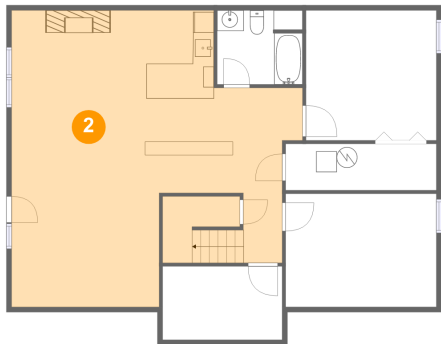
1 Floor 1 - Office



Dimensions: 14'7" x 10'11"
Area: 160 sq. ft
Counted as living area: Yes

Heated: Yes
Finished: Yes
Enclosed: Yes
Contiguous: Yes
Permitted: Yes
Wet space: No
Addition: No
Conversion: No

2 Floor 1 - Recreation Room



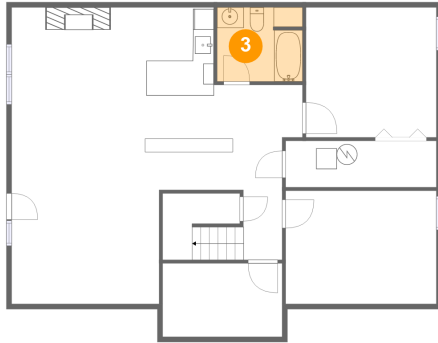
Dimensions: 28'2" x 28'8"
Area: 653 sq. ft
Counted as living area: Yes

Heated: Yes
Finished: Yes
Enclosed: Yes
Contiguous: Yes
Permitted: Yes
Wet space: No
Addition: No
Conversion: No

Home report

525 Scarlet Drive, Daleville, Botetourt County, Virginia, United States, 24083

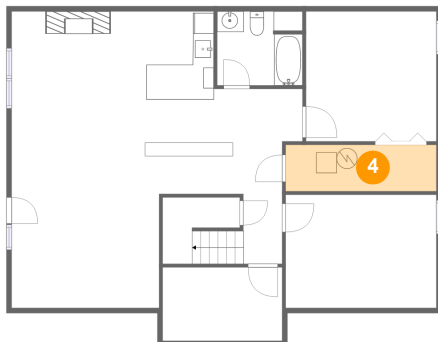
3 Floor 1 - Bath



Dimensions: 8'3" x 7'2"
Area: 58 sq. ft
Counted as living area: Yes

Heated: Yes
Finished: Yes
Enclosed: Yes
Contiguous: Yes
Permitted: Yes
Wet space: Yes
Addition: No
Conversion: No

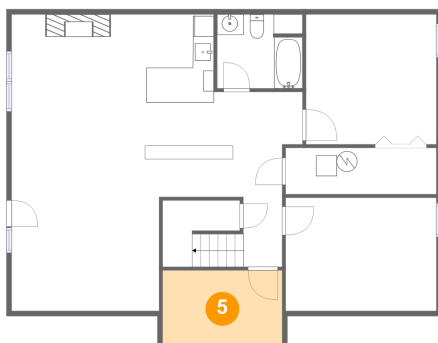
4 Floor 1 - Utility



Dimensions: 14'7" x 4'6"
Area: 66 sq. ft
Counted as living area: Yes

Heated: Yes
Finished: Yes
Enclosed: Yes
Contiguous: Yes
Permitted: Yes
Wet space: No
Addition: No
Conversion: No

5 Floor 1 - Storage



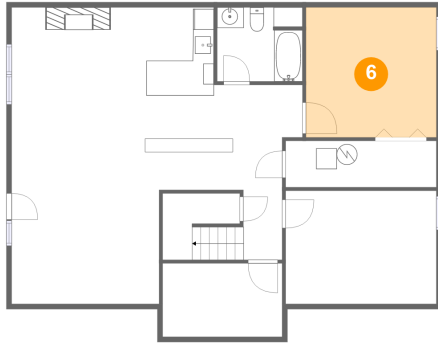
Dimensions: 11'7" x 7'1"
Area: 82 sq. ft
Counted as living area: No

Heated: No
Finished: No
Enclosed: No
Contiguous: Yes
Permitted: Yes
Wet space: No
Addition: No
Conversion: No

Home report

525 Scarlet Drive, Daleville, Botetourt County, Virginia, United States, 24083

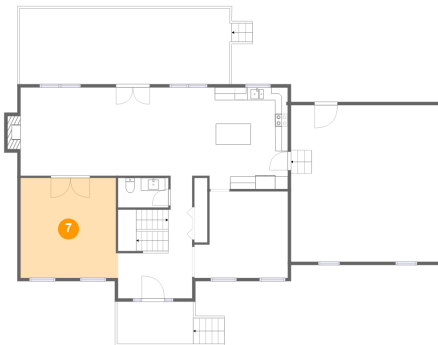
6 Floor 1 - Bedroom



Dimensions: 12'8" x 12'7"
Area: 159 sq. ft
Counted as living area: Yes

Heated: Yes
Finished: Yes
Enclosed: Yes
Contiguous: Yes
Permitted: Yes
Wet space: No
Addition: No
Conversion: No

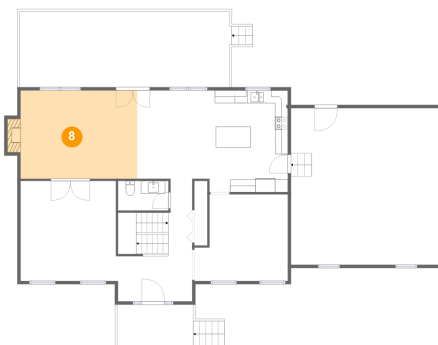
7 Floor 2 - Living Room



Dimensions: 15'3" x 15'7"
Area: 234 sq. ft
Counted as living area: Yes

Heated: Yes
Finished: Yes
Enclosed: Yes
Contiguous: Yes
Permitted: Yes
Wet space: No
Addition: No
Conversion: No

8 Floor 2 - Family Room



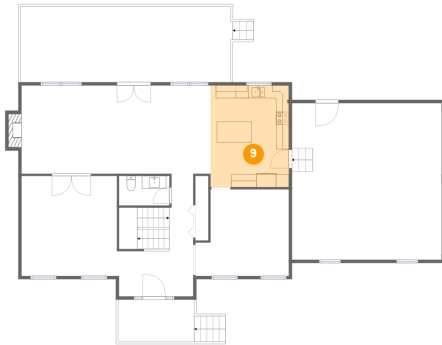
Dimensions: 18'2" x 13'9"
Area: 262 sq. ft
Counted as living area: Yes

Heated: Yes
Finished: Yes
Enclosed: Yes
Contiguous: Yes
Permitted: Yes
Wet space: No
Addition: No
Conversion: No

Home report

525 Scarlet Drive, Daleville, Botetourt County, Virginia, United States, 24083

9 Floor 2 - Kitchen



Dimensions: 12'3" x 15'11"
Area: 194 sq. ft
Counted as living area: Yes

Heated: Yes
Finished: Yes
Enclosed: Yes
Contiguous: Yes
Permitted: Yes
Wet space: No
Addition: No
Conversion: No

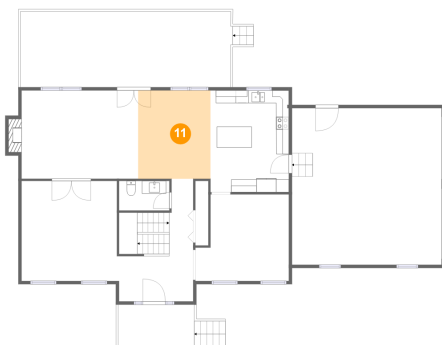
10 Floor 2 - Foyer



Dimensions: 11'7" x 19'2"
Area: 179 sq. ft
Counted as living area: Yes

Heated: Yes
Finished: Yes
Enclosed: Yes
Contiguous: Yes
Permitted: Yes
Wet space: No
Addition: No
Conversion: No

11 Floor 2 - Breakfast Area



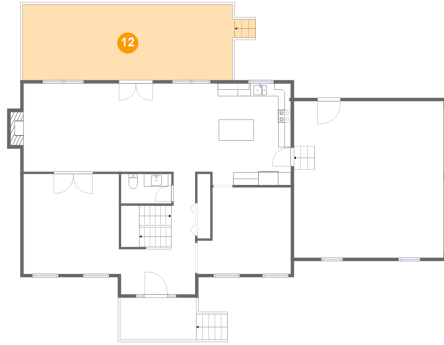
Dimensions: 11'4" x 13'9"
Area: 156 sq. ft
Counted as living area: Yes

Heated: Yes
Finished: Yes
Enclosed: Yes
Contiguous: Yes
Permitted: Yes
Wet space: No
Addition: No
Conversion: No

Home report

525 Scarlet Drive, Daleville, Botetourt County, Virginia, United States, 24083

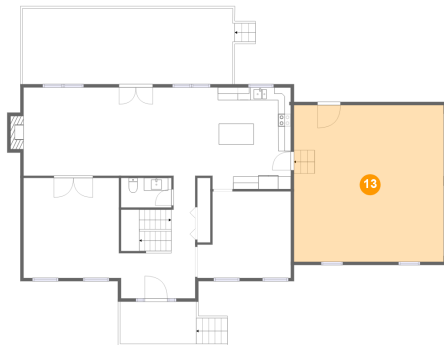
12 Floor 2 - Deck



Dimensions: 33'2" x 11'10"
Area: 398 sq. ft
Counted as living area: No

Heated: No
Finished: Yes
Enclosed: No
Contiguous: Yes
Permitted: Yes
Wet space: No
Addition: No
Conversion: No

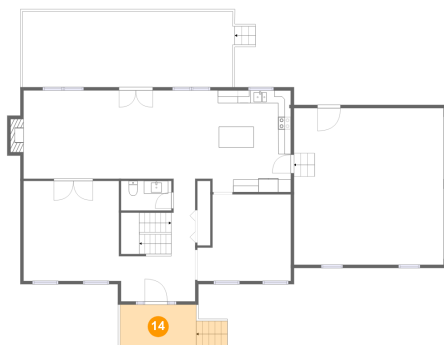
13 Floor 2 - Garage



Dimensions: 23'4" x 24'5"
Area: 571 sq. ft
Counted as living area: No

Heated: No
Finished: No
Enclosed: Yes
Contiguous: Yes
Permitted: Yes
Wet space: No
Addition: No
Conversion: No

14 Floor 2 - Porch

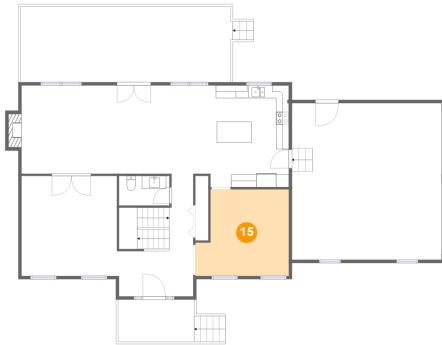


Dimensions: 11'10" x 6'7"
Area: 98 sq. ft
Counted as living area: No

Heated: No
Finished: Yes
Enclosed: No
Contiguous: Yes
Permitted: Yes
Wet space: No
Addition: No
Conversion: No

525 Scarlet Drive, Daleville, Botetourt County, Virginia, United States, 24083

15 Floor 2 - Dining Room



Dimensions: 14'7" x 13'6"
Area: 178 sq. ft
Counted as living area: Yes

Heated: Yes
Finished: Yes
Enclosed: Yes
Contiguous: Yes
Permitted: Yes
Wet space: No
Addition: No
Conversion: No

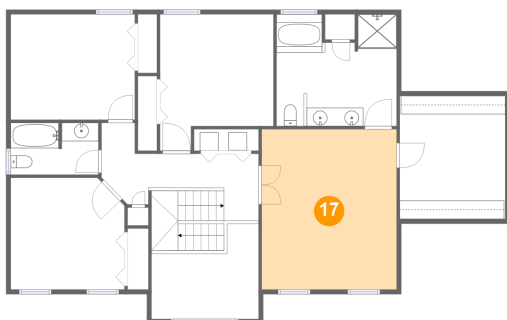
16 Floor 2 - WC



Dimensions: 7'10" x 4'7"
Area: 36 sq. ft
Counted as living area: Yes

Heated: Yes
Finished: Yes
Enclosed: Yes
Contiguous: Yes
Permitted: Yes
Wet space: Yes
Addition: No
Conversion: No

17 Floor 3 - Primary Bedroom

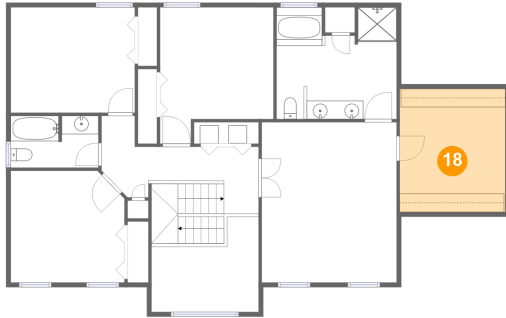


Dimensions: 14'7" x 17'4"
Area: 253 sq. ft
Counted as living area: Yes

Heated: Yes
Finished: Yes
Enclosed: Yes
Contiguous: Yes
Permitted: Yes
Wet space: No
Addition: No
Conversion: No

525 Scarlet Drive, Daleville, Botetourt County, Virginia, United States, 24083

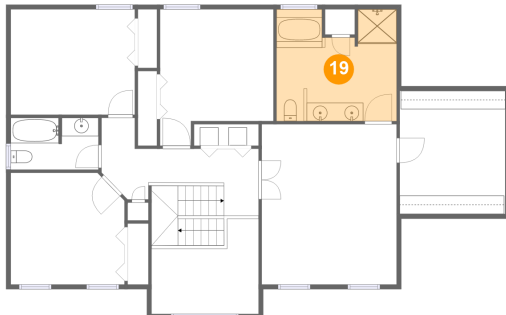
18 Floor 3 - W.I.C.



Dimensions: 11'5" x 13'4"
Area: 152 sq. ft
Counted as living area: Yes

Heated: Yes
Finished: Yes
Enclosed: Yes
Contiguous: Yes
Permitted: Yes
Wet space: No
Addition: No
Conversion: No

19 Floor 3 - Primary Bath



Dimensions: 13'0" x 12'1"
Area: 145 sq. ft
Counted as living area: Yes

Heated: Yes
Finished: Yes
Enclosed: Yes
Contiguous: Yes
Permitted: Yes
Wet space: Yes
Addition: No
Conversion: No

20 Floor 3 - Bedroom

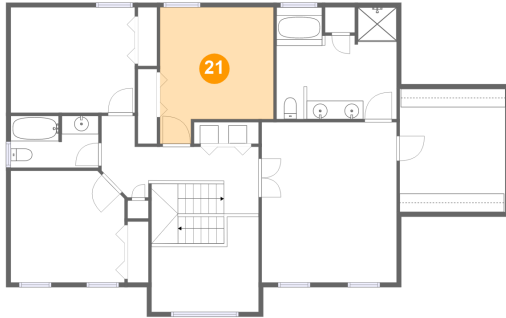


Dimensions: 12'4" x 12'1"
Area: 144 sq. ft
Counted as living area: Yes

Heated: Yes
Finished: Yes
Enclosed: Yes
Contiguous: Yes
Permitted: Yes
Wet space: No
Addition: No
Conversion: No

525 Scarlet Drive, Daleville, Botetourt County, Virginia, United States, 24083

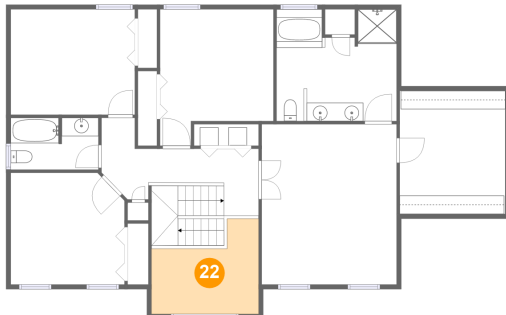
21 Floor 3 - Bedroom



Dimensions: 12'3" x 14'9"
Area: 157 sq. ft
Counted as living area: Yes

Heated: Yes
Finished: Yes
Enclosed: Yes
Contiguous: Yes
Permitted: Yes
Wet space: No
Addition: No
Conversion: No

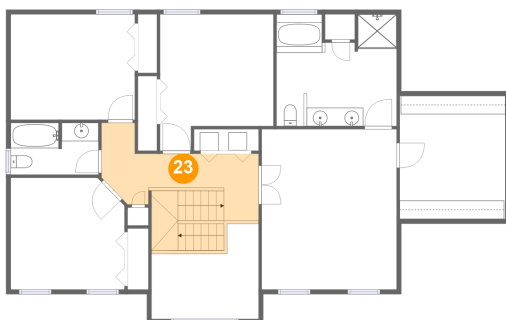
22 Floor 3 - Open To Below



Dimensions: 11'7" x 10'3"
Area: 93 sq. ft
Counted as living area: No

Heated: No
Finished: No
Enclosed: No
Contiguous: Yes
Permitted: No
Wet space: No
Addition: No
Conversion: No

23 Floor 3 - Hall

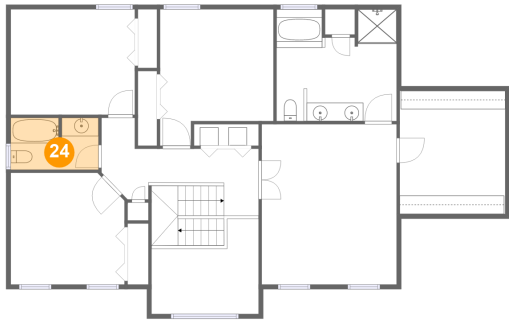


Dimensions: 16'11" x 8'10"
Area: 151 sq. ft
Counted as living area: Yes

Heated: Yes
Finished: Yes
Enclosed: Yes
Contiguous: Yes
Permitted: Yes
Wet space: No
Addition: No
Conversion: No

525 Scarlet Drive, Daleville, Botetourt County, Virginia, United States, 24083

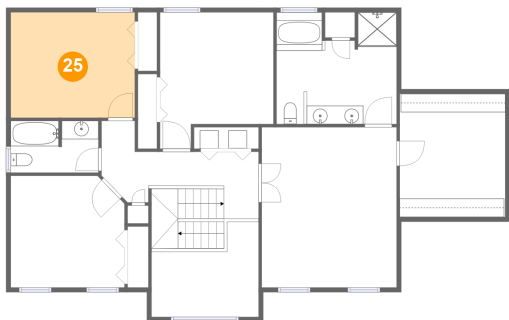
24 Floor 3 - Bath



Dimensions: 9'6" x 5'7"
Area: 52 sq. ft
Counted as living area: Yes

Heated: Yes
Finished: Yes
Enclosed: Yes
Contiguous: Yes
Permitted: Yes
Wet space: Yes
Addition: No
Conversion: No

25 Floor 3 - Bedroom



Dimensions: 13'5" x 11'5"
Area: 153 sq. ft
Counted as living area: Yes

Heated: Yes
Finished: Yes
Enclosed: Yes
Contiguous: Yes
Permitted: Yes
Wet space: No
Addition: No
Conversion: No