

10837 Garden Ridge Court, Davie, Broward County, Florida, United States, 33328

Gross Living Area: 5148 sq. ft



Space	Area (sq. ft)	Calculation
FLOOR 1 (Living area)	3524	Coordinate Polygon Area Algorithm using inches $-((267.1 + 267.1) * (-11 - 239.6) + (267.1 + 301.3) * (239.6 - 239.6) + (301.3 + 339.6) * (239.6 - 278) + (339.6 + 339.6) * (278 - 334.4) + (339.6 + 627.9) * (334.4 - 334.4) + (627.9 + 627.9) * (334.4 - 212.7) + (627.9 + 783.8) * (212.7 - 212.7) + (783.8 + 783.8) * (212.7 - 930.6) + (783.8 + 726.4) * (930.6 - 930.6) + (726.4 + 726.4) * (930.6 - 976.8) + (726.4 + 644.5) * (976.8 - 976.8) + (644.5 + 644.5) * (976.8 - 930.6) + (644.5 + 579.5) * (930.6 - 930.6) + (579.5 + 579.5) * (930.6 - 775.4) + (579.5 + 478) * (775.4 - 775.4) + (478 + 478) * (775.4 - 723) + (478 + 383.4) * (723 - 723) + (383.4 + 383.4) * (723 - 851.8) + (383.4 + 17.2) * (851.8 - 851.8) + (17.2 + 17.2) * (851.8 -$

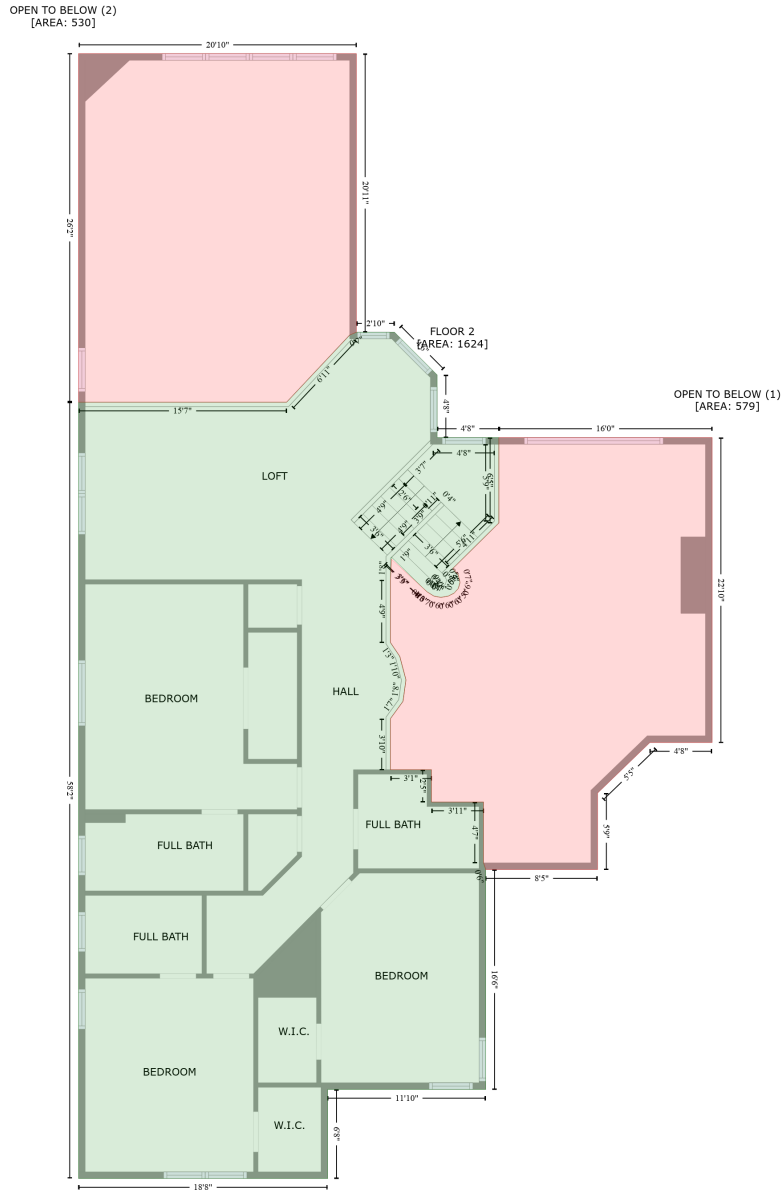
10837 Garden Ridge Court, Davie, Broward County, Florida, United States, 33328

Gross Living Area: 5148 sq. ft

Space	Area (sq. ft)	Calculation <small>Coordinate Polygon Area Algorithm using inches</small>
		$-11 + (17.2 + 267.1) * (-11 - -11)) * 0.5 * 0.00694 + -((246.8 + 242.8) * (693.9 - 693.9) + (242.8 + 242.8) * (693.9 - 845.8) + (242.8 + 246.8) * (845.8 - 845.8) + (246.8 + 246.8) * (845.8 - 693.9)) * 0.5 * 0.00694$
GARAGE (Non-living area)	650	$-((185.6 + 185.6) * (851.8 - 874.8) + (185.6 + 240.8) * (874.8 - 874.8) + (240.8 + 240.8) * (874.8 - 851.8) + (240.8 + 383.4) * (851.8 - 851.8) + (383.4 + 383.4) * (851.8 - 1117.6) + (383.4 + 188.4) * (1117.6 - 1117.6) + (188.4 + 188.4) * (1117.6 - 1103.2) + (188.4 + 17.2) * (1103.2 - 1103.2) + (17.2 + 17.2) * (1103.2 - 851.8) + (17.2 + 185.6) * (851.8 - 851.8)) * 0.5 * 0.00694$
OTHER ROOM (Non-living area)	9	$-((240.8 + 240.8) * (851.8 - 874.8) + (240.8 + 185.6) * (874.8 - 874.8) + (185.6 + 185.6) * (874.8 - 851.8) + (185.6 + 240.8) * (851.8 - 851.8)) * 0.5 * 0.00694$

10837 Garden Ridge Court, Davie, Broward County, Florida, United States, 33328

Gross Living Area: 5148 sq. ft



Space	Area (sq. ft)	Calculation
FLOOR 2 (Living area)	1624	Coordinate Polygon Area Algorithm using inches $-((302.6 + 340.9) * (194.7 - 233.1) + (340.9 + 340.9) * (233.1 - 289.4) + (340.9 + 396.5) * (289.4 - 289.4) + (396.5 + 396.5) * (289.4 - 366.3) + (396.5 + 354.8) * (366.3 - 407.5) + (354.8 + 360) * (407.5 - 412.8) + (360 + 361.5) * (412.8 - 420) + (361.5 + 360) * (420 - 425.1) + (360 + 356.3) * (425.1 - 429.4) + (356.3 + 351.1) * (429.4 - 432.1) + (351.1 + 344.3) * (432.1 - 433.2) + (344.3 + 337.9) * (433.2 - 432) + (337.9 + 334.2) * (432 - 429.7) + (334.2 + 332.5) * (429.7 - 428.7) + (332.5 + 329.3) * (428.7 - 425.8) + (329.3 + 300) * (425.8 - 397.1) + (300 + 299) * (397.1 - 417.3) + (299 + 299) * (417.3 - 473.9) + (299 + 307.4) * (473.9 - 486.3) + (307.4 + 312.9) * (486.3 -$

10837 Garden Ridge Court, Davie, Broward County, Florida, United States, 33328

Gross Living Area: 5148 sq. ft

Space	Area (sq. ft)	Calculation <small>Coordinate Polygon Area Algorithm using inches</small>
		$507.4 + (312.9 + 310.2) * (507.4 - 526.8) + (310.2 + 299) * (526.8 - 542.3) + (299 + 299) * (542.3 - 588.3) + (299 + 335.9) * (588.3 - 588.3) + (335.9 + 335.9) * (588.3 - 617.3) + (335.9 + 382.7) * (617.3 - 617.3) + (382.7 + 382.7) * (617.3 - 672.1) + (382.7 + 384.7) * (672.1 - 678.1) + (384.7 + 384.7) * (678.1 - 875.9) + (384.7 + 242.6) * (875.9 - 875.9) + (242.6 + 242.6) * (875.9 - 956) + (242.6 + 18.5) * (956 - 956) + (18.5 + 18.5) * (956 - 257.6) + (18.5 + 205.6) * (257.6 - 257.6) + (205.6 + 262.3) * (257.6 - 197.3) + (262.3 + 268.4) * (197.3 - 194.7) + (268.4 + 302.6) * (194.7 - 194.7) * 0.5 * 0.00694$
OPEN TO BELOW (Non-living area)	579	$-((588.3 + 588.3) * (289.4 - 563.8) + (588.3 + 532.3) * (563.8 - 563.8) + (532.3 + 485.3) * (563.8 - 609.3) + (485.3 + 485.3) * (609.3 - 678.1) + (485.3 + 384.7) * (678.1 - 678.1) + (384.7 + 382.7) * (678.1 - 672.1) + (382.7 + 382.7) * (672.1 - 617.3) + (382.7 + 335.9) * (617.3 - 617.3) + (335.9 + 335.9) * (617.3 - 588.3) + (335.9 + 299) * (588.3 - 588.3) + (299 + 299) * (588.3 - 542.3) + (299 + 310.2) * (542.3 - 526.8) + (310.2 + 312.9) * (526.8 - 507.4) + (312.9 + 307.4) * (507.4 - 486.3) + (307.4 + 299) * (486.3 - 473.9) + (299 + 299) * (473.9 - 417.3) + (299 + 300) * (417.3 - 398.8) + (300 + 328.5) * (398.8 - 425.1) + (328.5 + 329.3) * (425.1 - 425.8) + (329.3 + 332.5) * (425.8 - 428.7) + (332.5 + 334.2) * (428.7 - 429.7) + (334.2 + 337.9) * (429.7 - 432) + (337.9 + 344.3) * (432 - 433.2) + (344.3 + 351.1) * (433.2 - 432.1) + (351.1 + 356.3) * (432.1 - 429.4) + (356.3 + 360) * (429.4 - 425.1) + (360 + 361.5) * (425.1 - 420) + (361.5 + 360) * (420 - 412.8) + (360 + 354.8) * (412.8 - 407.5) + (354.8 + 396.5) * (407.5 - 366.3) + (396.5 + 396.5) * (366.3 - 289.4) + (396.5 + 588.3) * (289.4 - 289.4) * 0.5 * 0.00694$
OPEN TO BELOW (Non-living area)	530	$-((268.4 + 268.4) * (-55.9 - 194.7) + (268.4 + 262.3) * (194.7 - 197.3) + (262.3 + 205.6) * (197.3 - 257.6) + (205.6 + 18.5) * (257.6 - 257.6) + (18.5 + 18.5) * (257.6 - -55.9) + (18.5 + 268.4) * (-55.9 - -55.9)) * 0.5 * 0.00694$