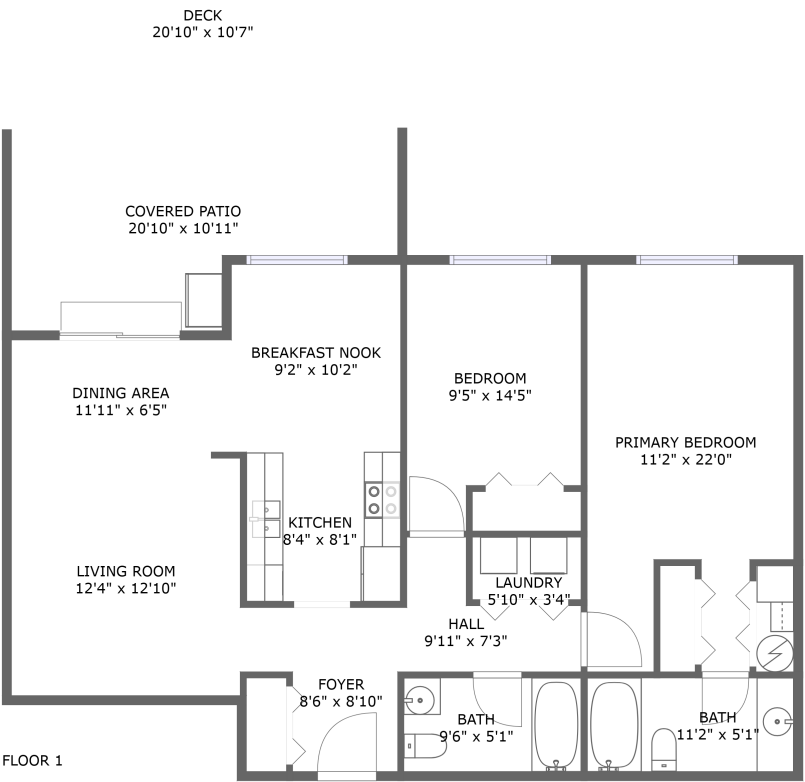


Home report

307 Northeast 85th Street, Northeast Hazel Dell, Hazel Dell,
Vancouver, Clark County, Washington, United States, 98665




Total Area: 1058 sq. ft

Floor 1: 1058 sq. ft

Excluded: Outdoor Patio Covered 189 sq. ft, Outdoor Deck 222 sq. ft, Walls: 79 sq. ft

Property summary

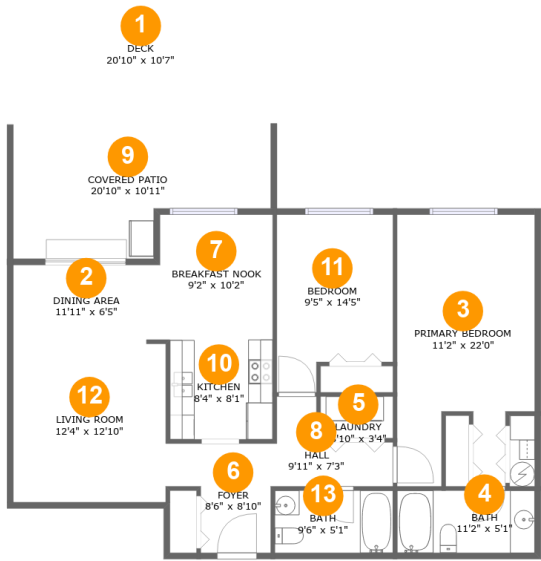
 1 Floors

 2 Bedrooms

 2 Bathrooms

Home report

307 Northeast 85th Street, Northeast Hazel Dell, Hazel Dell,
Vancouver, Clark County, Washington, United States, 98665



Room dimensions

Floor 1 Total:1058sqft Excluded: 411sqft

#		Max Dimensions	sqft	Included
1	Deck	20'10" x 10'7"	222 sq. ft	No
2	Dining Area	11'11" x 6'5"	76 sq. ft	Yes
3	Primary Bedroom	11'2" x 22'0"	216 sq. ft	Yes
4	Bath	11'2" x 5'1"	56 sq. ft	Yes
5	Laundry	5'10" x 3'4"	20 sq. ft	Yes
6	Foyer	8'6" x 8'10"	60 sq. ft	Yes
7	Breakfast Nook	9'2" x 10'2"	93 sq. ft	Yes
8	Hall	9'11" x 7'3"	47 sq. ft	Yes
9	Covered Patio	20'10" x 10'11"	189 sq. ft	No
10	Kitchen	8'4" x 8'1"	67 sq. ft	Yes
11	Bedroom	9'5" x 14'5"	120 sq. ft	Yes

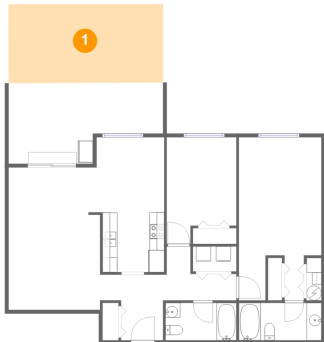
Home report

307 Northeast 85th Street, Northeast Hazel Dell, Hazel Dell,
Vancouver, Clark County, Washington, United States, 98665

#		Max Dimensions	sqft	Included
12	Living Room	12'4" x 12'10"	159 sq. ft	Yes
13	Bath	9'6" x 5'1"	48 sq. ft	Yes

307 Northeast 85th Street, Northeast Hazel Dell, Hazel Dell,
Vancouver, Clark County, Washington, United States, 98665

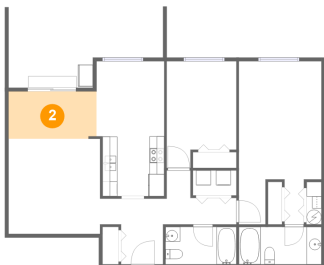
1 Floor 1 - Deck



Max Dimensions: 20'10" x 10'7"
Calculated Area: 222 sq. ft
Included: No

Heated: No
Finished: Yes
Enclosed: No
Contiguous: Yes
Permitted: Yes
Wet space: No
Addition: No
Conversion: No

2 Floor 1 - Dining Area

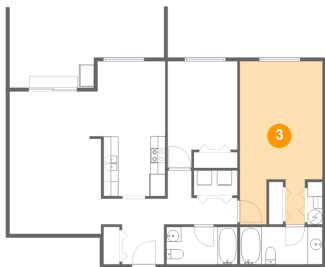


Max Dimensions: 11'11" x 6'5"
Calculated Area: 76 sq. ft
Included: Yes

Heated: Yes
Finished: Yes
Enclosed: Yes
Contiguous: Yes
Permitted: Yes
Wet space: No
Addition: No
Conversion: No

307 Northeast 85th Street, Northeast Hazel Dell, Hazel Dell,
Vancouver, Clark County, Washington, United States, 98665

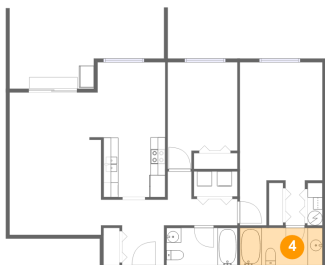
3 Floor 1 - Primary Bedroom



Max Dimensions: 11'2" x 22'0"
Calculated Area: 216 sq. ft
Included: Yes

Heated: Yes
Finished: Yes
Enclosed: Yes
Contiguous: Yes
Permitted: Yes
Wet space: No
Addition: No
Conversion: No

4 Floor 1 - Bath



Max Dimensions: 11'2" x 5'1"
Calculated Area: 56 sq. ft
Included: Yes

Heated: Yes
Finished: Yes
Enclosed: Yes
Contiguous: Yes
Permitted: Yes
Wet space: Yes
Addition: No
Conversion: No

5 Floor 1 - Laundry

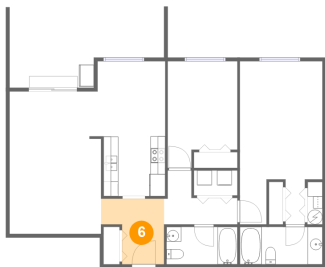


Max Dimensions: 5'10" x 3'4"
Calculated Area: 20 sq. ft
Included: Yes

Heated: Yes
Finished: Yes
Enclosed: Yes
Contiguous: Yes
Permitted: Yes
Wet space: No
Addition: No
Conversion: No

307 Northeast 85th Street, Northeast Hazel Dell, Hazel Dell,
Vancouver, Clark County, Washington, United States, 98665

6 Floor 1 - Foyer



Max Dimensions: 8'6" x 8'10"
Calculated Area: 60 sq. ft
Included: Yes

Heated: Yes
Finished: Yes
Enclosed: Yes
Contiguous: Yes
Permitted: Yes
Wet space: No
Addition: No
Conversion: No

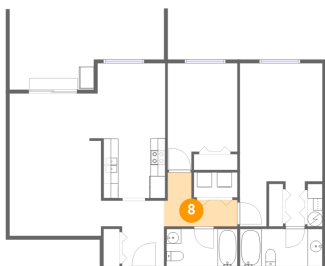
7 Floor 1 - Breakfast Nook



Max Dimensions: 9'2" x 10'2"
Calculated Area: 93 sq. ft
Included: Yes

Heated: Yes
Finished: Yes
Enclosed: Yes
Contiguous: Yes
Permitted: Yes
Wet space: No
Addition: No
Conversion: No

8 Floor 1 - Hall

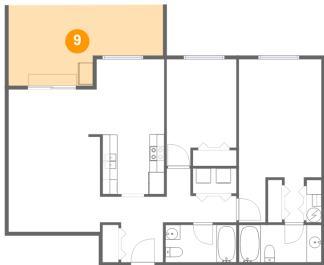


Max Dimensions: 9'11" x 7'3"
Calculated Area: 47 sq. ft
Included: Yes

Heated: Yes
Finished: Yes
Enclosed: Yes
Contiguous: Yes
Permitted: Yes
Wet space: No
Addition: No
Conversion: No

307 Northeast 85th Street, Northeast Hazel Dell, Hazel Dell,
Vancouver, Clark County, Washington, United States, 98665

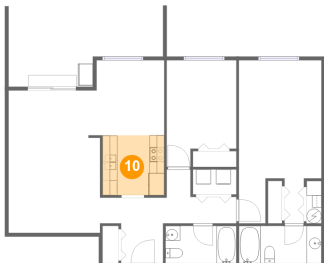
9 Floor 1 - Covered Patio



Max Dimensions: 20'10" x 10'11"
Calculated Area: 189 sq. ft
Included: No

Heated: No
Finished: Yes
Enclosed: No
Contiguous: Yes
Permitted: Yes
Wet space: No
Addition: No
Conversion: No

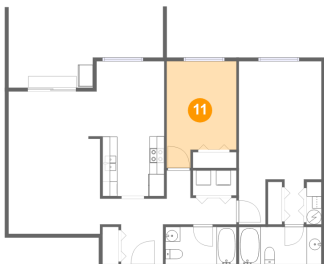
10 Floor 1 - Kitchen



Max Dimensions: 8'4" x 8'1"
Calculated Area: 67 sq. ft
Included: Yes

Heated: Yes
Finished: Yes
Enclosed: Yes
Contiguous: Yes
Permitted: Yes
Wet space: No
Addition: No
Conversion: No

11 Floor 1 - Bedroom

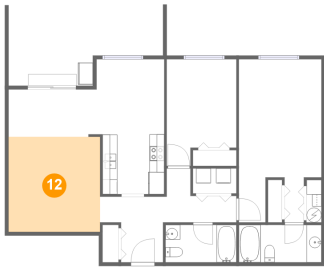


Max Dimensions: 9'5" x 14'5"
Calculated Area: 120 sq. ft
Included: Yes

Heated: Yes
Finished: Yes
Enclosed: Yes
Contiguous: Yes
Permitted: Yes
Wet space: No
Addition: No
Conversion: No

307 Northeast 85th Street, Northeast Hazel Dell, Hazel Dell,
Vancouver, Clark County, Washington, United States, 98665

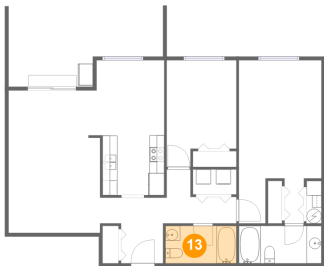
12 Floor 1 - Living Room



Max Dimensions: 12'4" x 12'10"
Calculated Area: 159 sq. ft
Included: Yes

Heated: Yes
Finished: Yes
Enclosed: Yes
Contiguous: Yes
Permitted: Yes
Wet space: No
Addition: No
Conversion: No

13 Floor 1 - Bath



Max Dimensions: 9'6" x 5'1"
Calculated Area: 48 sq. ft
Included: Yes

Heated: Yes
Finished: Yes
Enclosed: Yes
Contiguous: Yes
Permitted: Yes
Wet space: Yes
Addition: No
Conversion: No