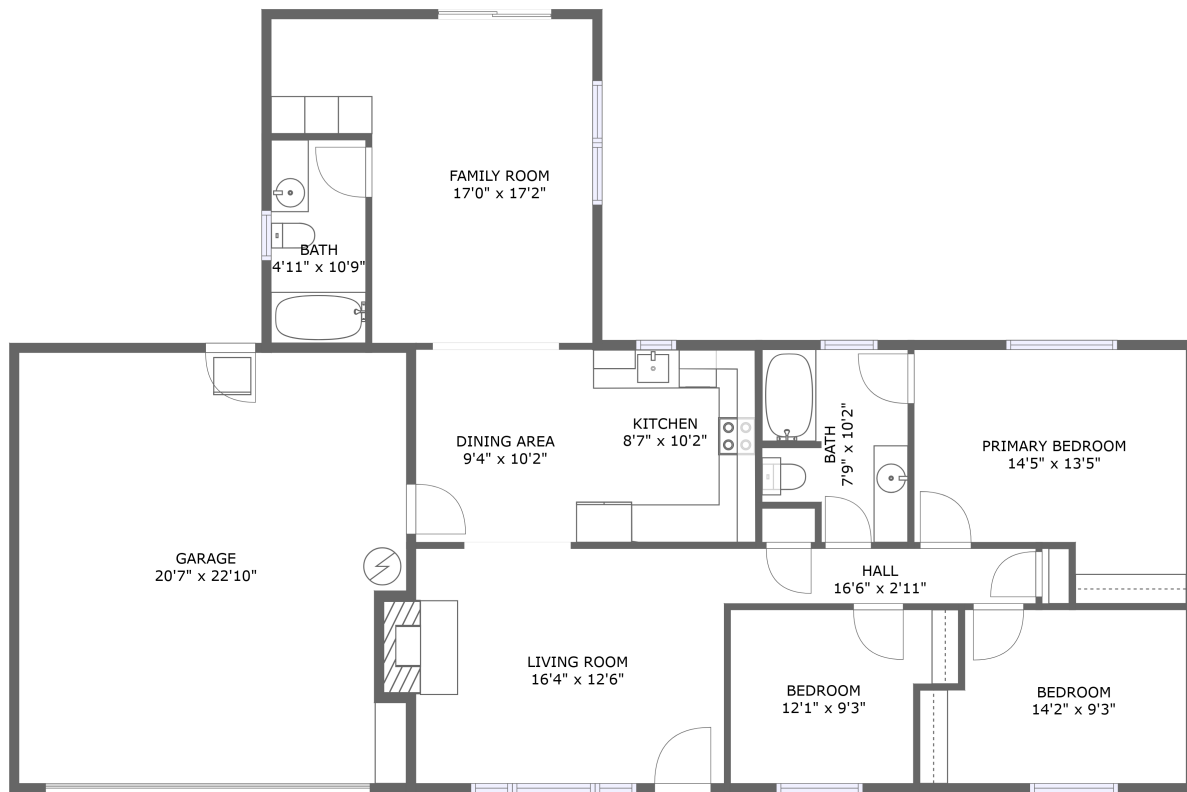



14720 Northeast 39th Street, Burnt Bridge Creek, Vancouver, Clark County, Washington, United States,



FLOOR 1

Property summary

 **1** Garages

 **3** Bedrooms

 **2** Bathrooms

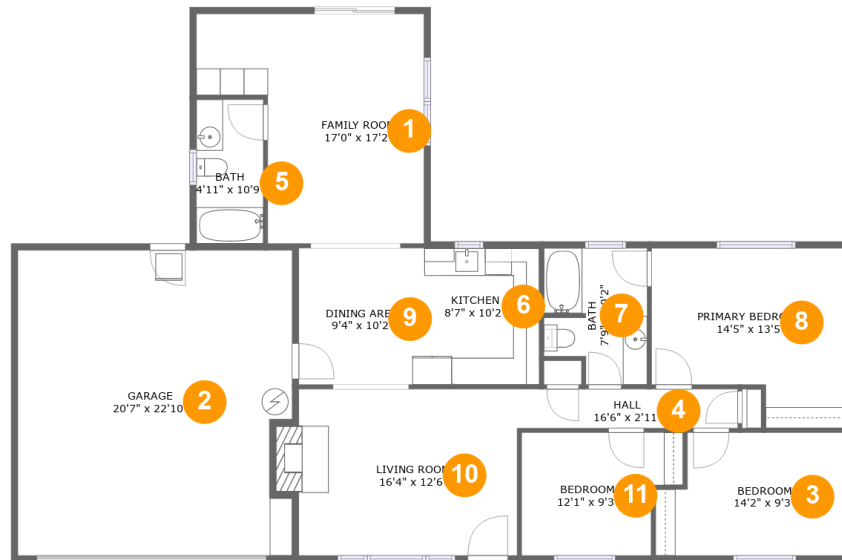
 **0** Half baths

 **1** Floors

 **1,328**
Gross living
area sqft

 **1,827**
Total sqft

14720 Northeast 39th Street, Burnt Bridge Creek, Vancouver, Clark County, Washington, United States,



Room dimensions

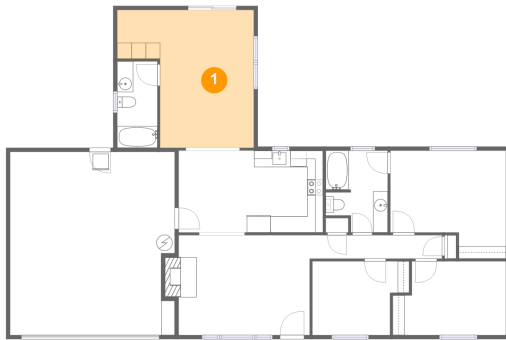
Floor 1

Total sqft: 1827 Living area: 1328

#		Dimensions	sqft	Counted as living area
1	Family Room	17'0" x 17'2"	234 sq. ft	Yes
2	Garage	20'7" x 22'10"	460 sq. ft	No
3	Bedroom	14'2" x 9'3"	120 sq. ft	Yes
4	Hall	16'6" x 2'11"	48 sq. ft	Yes
5	Bath	4'11" x 10'9"	54 sq. ft	Yes
6	Kitchen	8'7" x 10'2"	88 sq. ft	Yes
7	Bath	7'9" x 10'2"	71 sq. ft	Yes
8	Primary Bedroom	14'5" x 13'5"	167 sq. ft	Yes
9	Dining Area	9'4" x 10'2"	96 sq. ft	Yes
10	Living Room	16'4" x 12'6"	212 sq. ft	Yes
11	Bedroom	12'1" x 9'3"	99 sq. ft	Yes

14720 Northeast 39th Street, Burnt Bridge Creek, Vancouver, Clark County, Washington, United States,

1 Floor 1 - Family Room



Dimensions: 17'0" x 17'2"
Area: 234 sq. ft
Counted as living area: Yes

Heated: Yes
Finished: Yes
Enclosed: Yes
Contiguous: Yes
Permitted: Yes
Wet space: No
Addition: No
Conversion: No

2 Floor 1 - Garage



Dimensions: 20'7" x 22'10"
Area: 460 sq. ft
Counted as living area: No

Heated: No
Finished: No
Enclosed: Yes
Contiguous: Yes
Permitted: Yes
Wet space: No
Addition: No
Conversion: No

14720 Northeast 39th Street, Burnt Bridge Creek, Vancouver, Clark County, Washington, United States,

3 Floor 1 - Bedroom



Dimensions: 14'2" x 9'3"
Area: 120 sq. ft
Counted as living area: Yes

Heated: Yes
Finished: Yes
Enclosed: Yes
Contiguous: Yes
Permitted: Yes
Wet space: No
Addition: No
Conversion: No

4 Floor 1 - Hall



Dimensions: 16'6" x 2'11"
Area: 48 sq. ft
Counted as living area: Yes

Heated: Yes
Finished: Yes
Enclosed: Yes
Contiguous: Yes
Permitted: Yes
Wet space: No
Addition: No
Conversion: No

5 Floor 1 - Bath

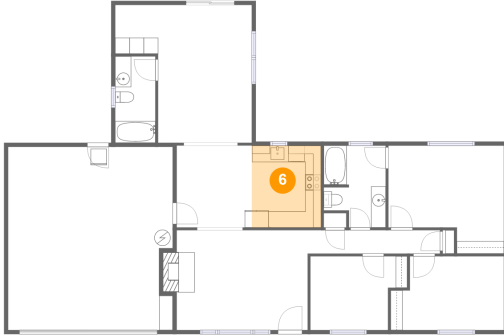


Dimensions: 4'11" x 10'9"
Area: 54 sq. ft
Counted as living area: Yes

Heated: Yes
Finished: Yes
Enclosed: Yes
Contiguous: Yes
Permitted: Yes
Wet space: Yes
Addition: No
Conversion: No

**14720 Northeast 39th Street, Burnt Bridge Creek,
Vancouver, Clark County, Washington, United States,**

6 Floor 1 - Kitchen



Dimensions: 8'7" x 10'2"
Area: 88 sq. ft
Counted as living area: Yes

Heated: Yes
Finished: Yes
Enclosed: Yes
Contiguous: Yes
Permitted: Yes
Wet space: No
Addition: No
Conversion: No

7 Floor 1 - Bath



Dimensions: 7'9" x 10'2"
Area: 71 sq. ft
Counted as living area: Yes

Heated: Yes
Finished: Yes
Enclosed: Yes
Contiguous: Yes
Permitted: Yes
Wet space: Yes
Addition: No
Conversion: No

8 Floor 1 - Primary Bedroom



Dimensions: 14'5" x 13'5"
Area: 167 sq. ft
Counted as living area: Yes

Heated: Yes
Finished: Yes
Enclosed: Yes
Contiguous: Yes
Permitted: Yes
Wet space: No
Addition: No
Conversion: No

**14720 Northeast 39th Street, Burnt Bridge Creek,
Vancouver, Clark County, Washington, United States,**

9 Floor 1 - Dining Area



Dimensions: 9'4" x 10'2"
Area: 96 sq. ft
Counted as living area: Yes

Heated: Yes
Finished: Yes
Enclosed: Yes
Contiguous: Yes
Permitted: Yes
Wet space: No
Addition: No
Conversion: No

10 Floor 1 - Living Room



Dimensions: 16'4" x 12'6"
Area: 212 sq. ft
Counted as living area: Yes

Heated: Yes
Finished: Yes
Enclosed: Yes
Contiguous: Yes
Permitted: Yes
Wet space: No
Addition: No
Conversion: No

11 Floor 1 - Bedroom



Dimensions: 12'1" x 9'3"
Area: 99 sq. ft
Counted as living area: Yes

Heated: Yes
Finished: Yes
Enclosed: Yes
Contiguous: Yes
Permitted: Yes
Wet space: No
Addition: No
Conversion: No