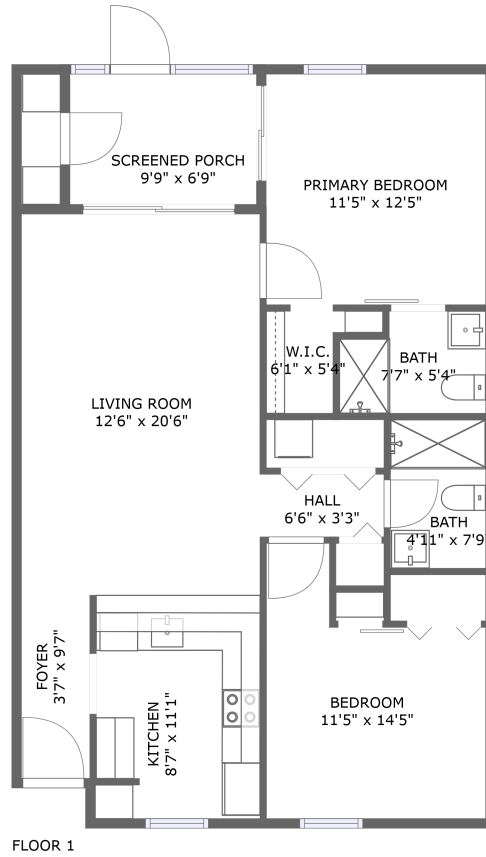


3001 58th Avenue South, Greater Pinellas Point, St. Petersburg, Pinellas County, Florida, United




Property Summary


 **0** garages


 **2** bedrooms

 **2** bathrooms

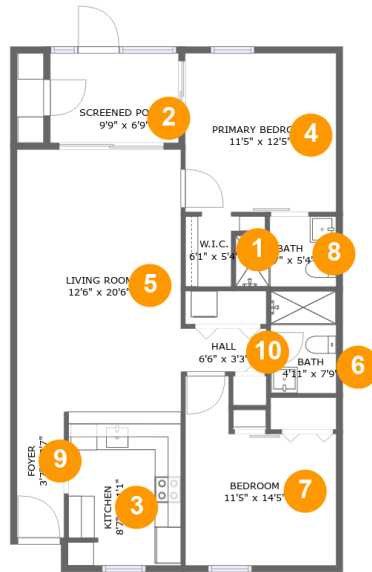
 **0** half baths

 **1** floors

 **798** Gross Living Area sqft

 **926** total sqft

3001 58th Avenue South, Greater Pinellas Point, St. Petersburg, Pinellas County, Florida, United



Room Dimensions

Floor 1

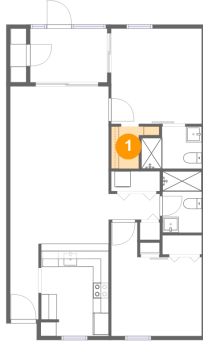
Total sqft: 926

Living area: 798

#	Room name	Dimensions	Area (sqft)	Counted as Living Area
1	W.i.c.	6'1" x 5'4"	22 sq. ft	No
2	Screened Porch	9'9" x 6'9"	67 sq. ft	No
3	Kitchen	8'7" x 11'1"	94 sq. ft	Yes
4	Primary Bedroom	11'5" x 12'5"	139 sq. ft	Yes
5	Living Room	12'6" x 20'6"	254 sq. ft	Yes
6	Bath	4'11" x 7'9"	39 sq. ft	Yes
7	Bedroom	11'5" x 14'5"	129 sq. ft	Yes
8	Bath	7'7" x 5'4"	37 sq. ft	Yes
9	Foyer	3'7" x 9'7"	34 sq. ft	Yes
10	Hall	6'6" x 3'3"	21 sq. ft	No

3001 58th Avenue South, Greater Pinellas Point, St. Petersburg, Pinellas County, Florida, United

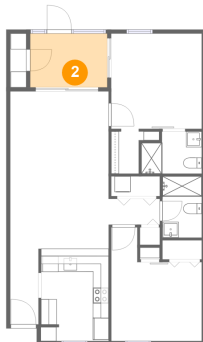
1 Floor 1 - W.i.c.



Dimensions: 6'1" x 5'4"
Area: 22 sq. ft
Counted as Living Area: No

Heated: Yes
Finished: Yes
Enclosed: Yes
Contiguous: Yes
Permitted: Yes
Wet Space: No
Addition: No
Conversion: No

2 Floor 1 - Screened Porch

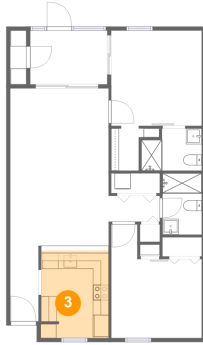


Dimensions: 9'9" x 6'9"
Area: 67 sq. ft
Counted as Living Area: No

Heated: No
Finished: Yes
Enclosed: No
Contiguous: Yes
Permitted: Yes
Wet Space: No
Addition: No
Conversion: No

3001 58th Avenue South, Greater Pinellas Point, St. Petersburg, Pinellas County, Florida, United

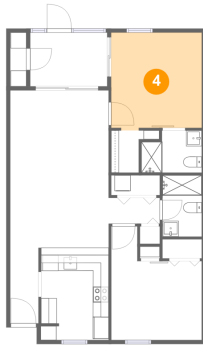
3 Floor 1 - Kitchen



Dimensions: 8'7" x 11'1"
Area: 94 sq. ft
Counted as Living Area:
Yes

Heated: Yes
Finished: Yes
Enclosed: Yes
Contiguous:
Yes
Permitted: Yes
Wet Space: No
Addition: No
Conversion: No

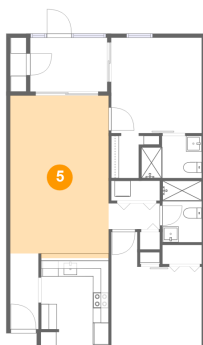
4 Floor 1 - Primary Bedroom



Dimensions: 11'5" x 12'5"
Area: 139 sq. ft
Counted as Living Area:
Yes

Heated: Yes
Finished: Yes
Enclosed: Yes
Contiguous:
Yes
Permitted: Yes
Wet Space: No
Addition: No
Conversion: No

5 Floor 1 - Living Room

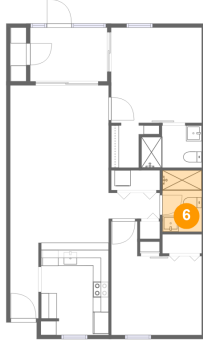


Dimensions: 12'6" x 20'6"
Area: 254 sq. ft
Counted as Living Area:
Yes

Heated: Yes
Finished: Yes
Enclosed: Yes
Contiguous:
Yes
Permitted: Yes
Wet Space: No
Addition: No
Conversion: No

3001 58th Avenue South, Greater Pinellas Point, St. Petersburg, Pinellas County, Florida, United

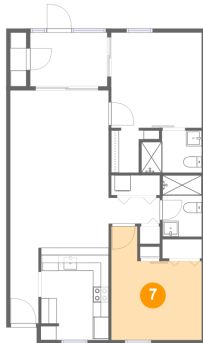
6 Floor 1 - Bath



Dimensions: 4'11" x 7'9"
Area: 39 sq. ft
Counted as Living Area:
Yes

Heated: Yes
Finished: Yes
Enclosed: Yes
Contiguous:
Yes
Permitted: Yes
Wet Space: Yes
Addition: No
Conversion: No

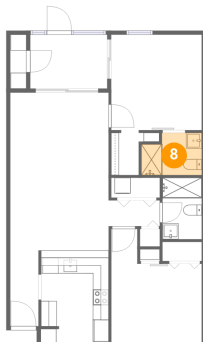
7 Floor 1 - Bedroom



Dimensions: 11'5" x 14'5"
Area: 129 sq. ft
Counted as Living Area:
Yes

Heated: Yes
Finished: Yes
Enclosed: Yes
Contiguous:
Yes
Permitted: Yes
Wet Space: No
Addition: No
Conversion: No

8 Floor 1 - Bath

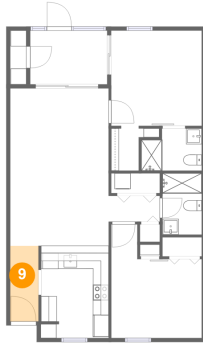


Dimensions: 7'7" x 5'4"
Area: 37 sq. ft
Counted as Living Area:
Yes

Heated: Yes
Finished: Yes
Enclosed: Yes
Contiguous:
Yes
Permitted: Yes
Wet Space: Yes
Addition: No
Conversion: No

3001 58th Avenue South, Greater Pinellas Point, St. Petersburg, Pinellas County, Florida, United

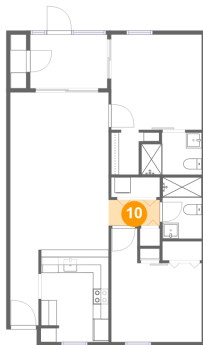
9 Floor 1 - Foyer



Dimensions: 3'7" x 9'7"
Area: 34 sq. ft
Counted as Living Area:
Yes

Heated: Yes
Finished: Yes
Enclosed: Yes
Contiguous:
Yes
Permitted: Yes
Wet Space: No
Addition: No
Conversion: No

10 Floor 1 - Hall



Dimensions: 6'6" x 3'3"
Area: 21 sq. ft
Counted as Living Area: No

Heated: Yes
Finished: Yes
Enclosed: Yes
Contiguous: Yes
Permitted: Yes
Wet Space: No
Addition: No
Conversion: No