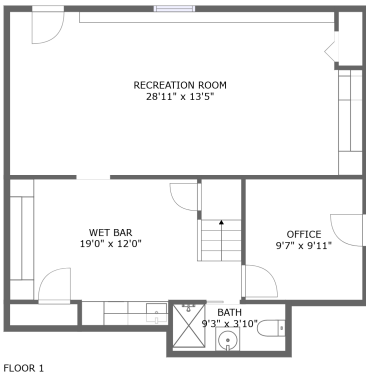
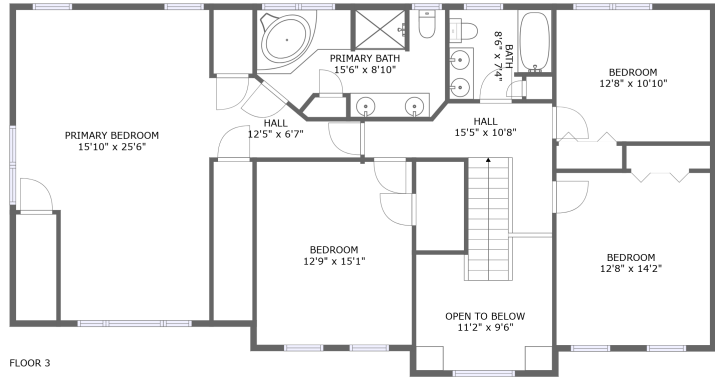
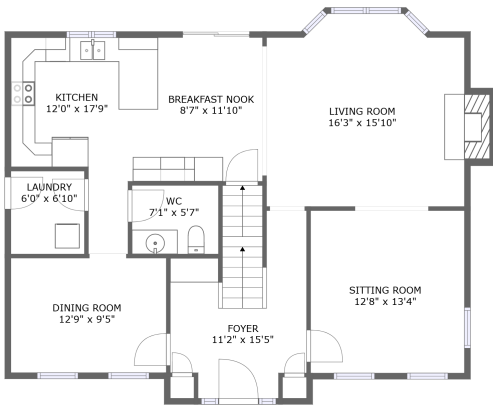


10 Aspen Road, Shrewsbury, Worcester County, Massachusetts, United States, 01545




Property Summary

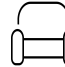
 **0** garages

 **4** bedrooms

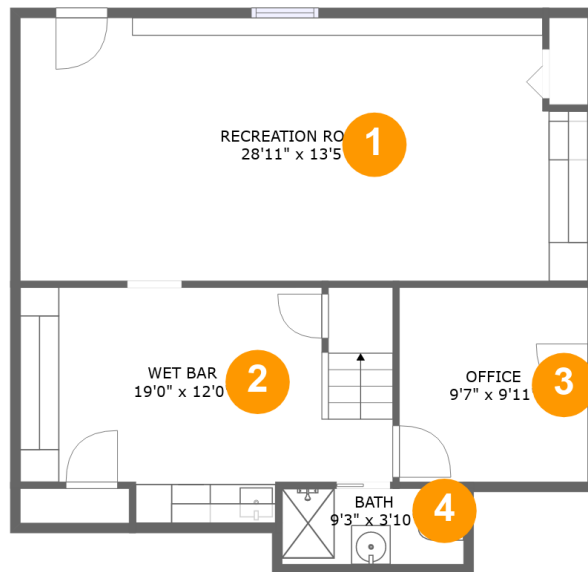
 **3** bathrooms

 **1** half baths

 **3** floors

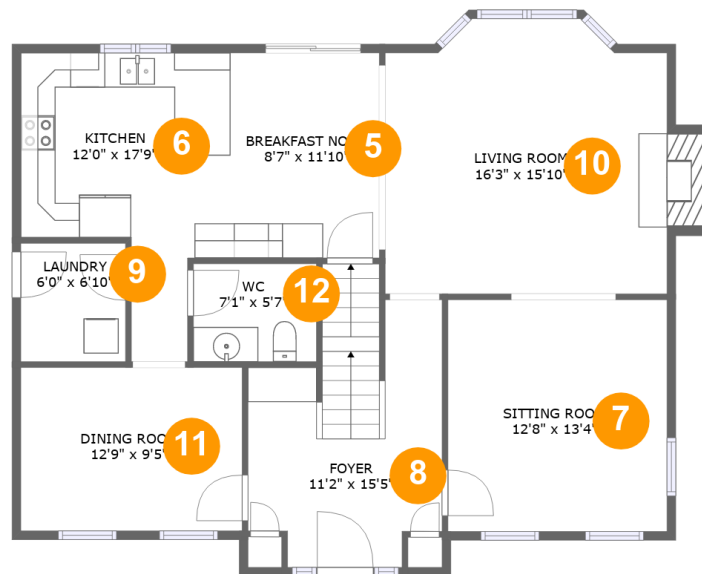
 **2,743** Gross Living Area sqft

 **3,599** total sqft

**10 Aspen Road, Shrewsbury, Worcester County,
Massachusetts, United States, 01545****Room Dimensions****Floor 1****Total sqft: 811****Living area: 79**

#	Room name	Dimensions	Area (sqft)	Counted as Living Area
1	Recreation Room	28'11" x 13'5"	378 sq. ft	No
2	Wet Bar	19'0" x 12'0"	202 sq. ft	No
3	Office	9'7" x 9'11"	95 sq. ft	No
4	Bath	9'3" x 3'10"	36 sq. ft	Yes

10 Aspen Road, Shrewsbury, Worcester County, Massachusetts, United States, 01545



Room Dimensions

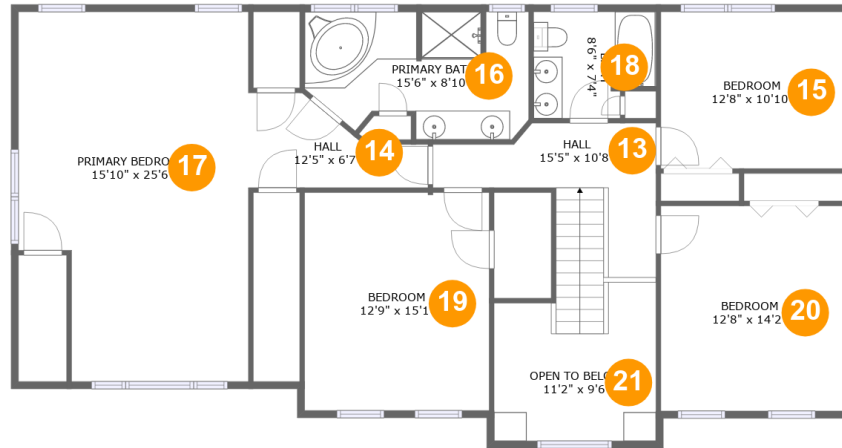
Floor 2

Total sqft: 1147

Living area: 1134

#	Room name	Dimensions	Area (sqft)	Counted as Living Area
5	Breakfast Nook	8'7" x 11'10"	102 sq. ft	Yes
6	Kitchen	12'0" x 17'9"	154 sq. ft	Yes
7	Sitting Room	12'8" x 13'4"	169 sq. ft	Yes
8	Foyer	11'2" x 15'5"	151 sq. ft	Yes
9	Laundry	6'0" x 6'10"	41 sq. ft	Yes
10	Living Room	16'3" x 15'10"	253 sq. ft	Yes
11	Dining Room	12'9" x 9'5"	120 sq. ft	Yes
12	Wc	7'1" x 5'7"	40 sq. ft	Yes

10 Aspen Road, Shrewsbury, Worcester County, Massachusetts, United States, 01545



Room Dimensions

Floor 3

Total sqft: 1641

Living area: 1530

#	Room name	Dimensions	Area (sqft)	Counted as Living Area
13	Hall	15'5" x 10'8"	118 sq. ft	Yes
14	Hall	12'5" x 6'7"	58 sq. ft	Yes
15	Bedroom	12'8" x 10'10"	137 sq. ft	Yes
16	Primary Bath	15'6" x 8'10"	119 sq. ft	Yes
17	Primary Bedroom	15'10" x 25'6"	372 sq. ft	Yes
18	Bath	8'6" x 7'4"	57 sq. ft	Yes
19	Bedroom	12'9" x 15'1"	192 sq. ft	Yes
20	Bedroom	12'8" x 14'2"	179 sq. ft	Yes
21	Open To Below	11'2" x 9'6"	103 sq. ft	No

10 Aspen Road, Shrewsbury, Worcester County, Massachusetts, United States, 01545

1 Floor 1 - Recreation Room



Dimensions: 28'11" x 13'5"
Area: 378 sq. ft
Counted as Living Area: No

Heated: Yes
Finished: Yes
Enclosed: Yes
Contiguous: Yes
Permitted: Yes
Wet Space: No
Addition: No
Conversion: No

2 Floor 1 - Wet Bar



Dimensions: 19'0" x 12'0"
Area: 202 sq. ft
Counted as Living Area: No

Heated: Yes
Finished: Yes
Enclosed: Yes
Contiguous: Yes
Permitted: Yes
Wet Space: No
Addition: No
Conversion: No

10 Aspen Road, Shrewsbury, Worcester County, Massachusetts, United States, 01545

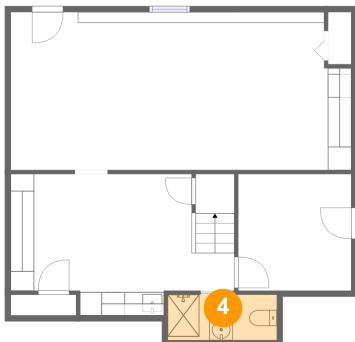
3 Floor 1 - Office



Dimensions: 9'7" x 9'11"
Area: 95 sq. ft
Counted as Living Area: No

Heated: Yes
Finished: Yes
Enclosed: Yes
Contiguous: Yes
Permitted: Yes
Wet Space: No
Addition: No
Conversion: No

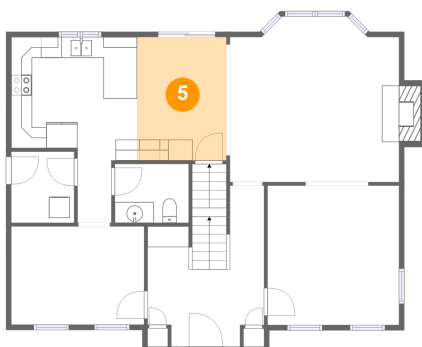
4 Floor 1 - Bath



Dimensions: 9'3" x 3'10"
Area: 36 sq. ft
Counted as Living Area:
Yes

Heated: Yes
Finished: Yes
Enclosed: Yes
Contiguous:
Yes
Permitted: Yes
Wet Space: Yes
Addition: No
Conversion: No

5 Floor 2 - Breakfast Nook

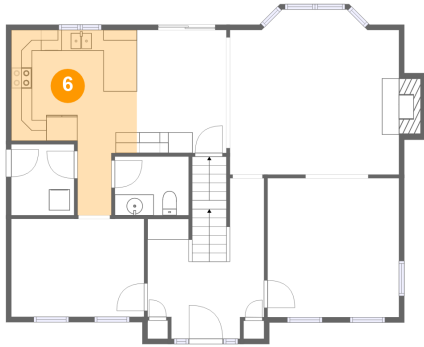


Dimensions: 8'7" x 11'10"
Area: 102 sq. ft
Counted as Living Area:
Yes

Heated: Yes
Finished: Yes
Enclosed: Yes
Contiguous:
Yes
Permitted: Yes
Wet Space: No
Addition: No
Conversion: No

10 Aspen Road, Shrewsbury, Worcester County, Massachusetts, United States, 01545

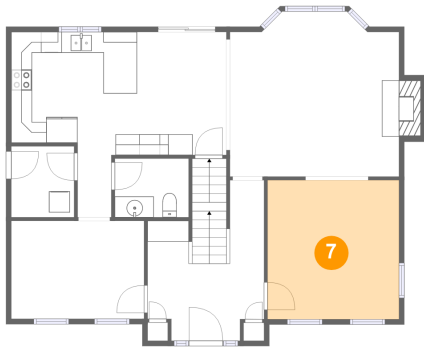
6 Floor 2 - Kitchen



Dimensions: 12'0" x 17'9"
Area: 154 sq. ft
Counted as Living Area:
Yes

Heated: Yes
Finished: Yes
Enclosed: Yes
Contiguous:
Yes
Permitted: Yes
Wet Space: No
Addition: No
Conversion: No

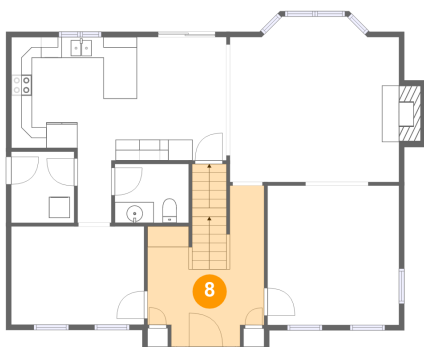
7 Floor 2 - Sitting Room



Dimensions: 12'8" x 13'4"
Area: 169 sq. ft
Counted as Living Area:
Yes

Heated: Yes
Finished: Yes
Enclosed: Yes
Contiguous:
Yes
Permitted: Yes
Wet Space: No
Addition: No
Conversion: No

8 Floor 2 - Foyer

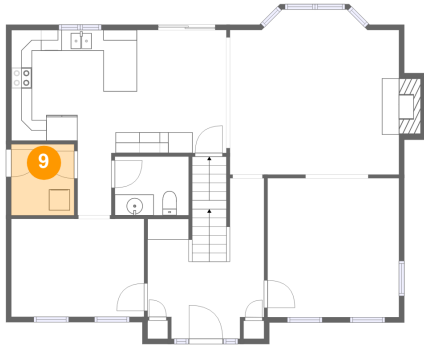


Dimensions: 11'2" x 15'5"
Area: 151 sq. ft
Counted as Living Area:
Yes

Heated: Yes
Finished: Yes
Enclosed: Yes
Contiguous:
Yes
Permitted: Yes
Wet Space: No
Addition: No
Conversion: No

10 Aspen Road, Shrewsbury, Worcester County, Massachusetts, United States, 01545

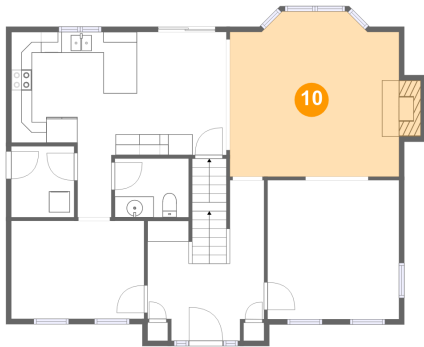
9 Floor 2 - Laundry



Dimensions: 6'0" x 6'10"
Area: 41 sq. ft
Counted as Living Area:
Yes

Heated: Yes
Finished: Yes
Enclosed: Yes
Contiguous:
Yes
Permitted: Yes
Wet Space: No
Addition: No
Conversion: No

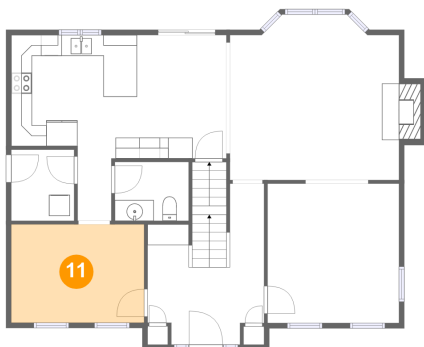
10 Floor 2 - Living Room



Dimensions: 16'3" x 15'10"
Area: 253 sq. ft
Counted as Living Area:
Yes

Heated: Yes
Finished: Yes
Enclosed: Yes
Contiguous:
Yes
Permitted: Yes
Wet Space: No
Addition: No
Conversion: No

11 Floor 2 - Dining Room

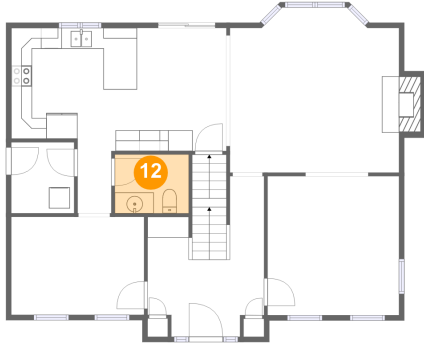


Dimensions: 12'9" x 9'5"
Area: 120 sq. ft
Counted as Living Area:
Yes

Heated: Yes
Finished: Yes
Enclosed: Yes
Contiguous:
Yes
Permitted: Yes
Wet Space: No
Addition: No
Conversion: No

10 Aspen Road, Shrewsbury, Worcester County, Massachusetts, United States, 01545

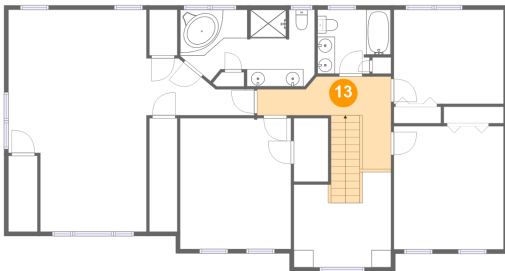
12 Floor 2 - Wc



Dimensions: 7'1" x 5'7"
Area: 40 sq. ft
Counted as Living Area:
Yes

Heated: Yes
Finished: Yes
Enclosed: Yes
Contiguous:
Yes
Permitted: Yes
Wet Space: Yes
Addition: No
Conversion: No

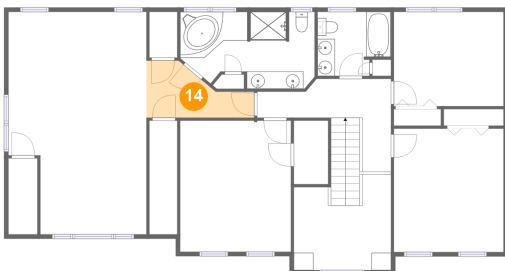
13 Floor 3 - Hall



Dimensions: 15'5" x 10'8"
Area: 118 sq. ft
Counted as Living Area:
Yes

Heated: Yes
Finished: Yes
Enclosed: Yes
Contiguous:
Yes
Permitted: Yes
Wet Space: No
Addition: No
Conversion: No

14 Floor 3 - Hall

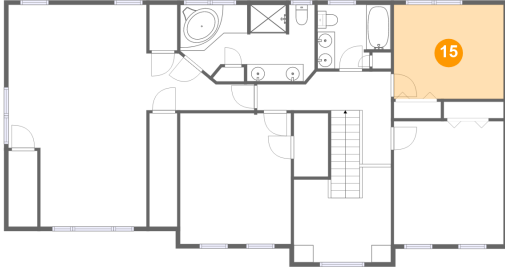


Dimensions: 12'5" x 6'7"
Area: 58 sq. ft
Counted as Living Area:
Yes

Heated: Yes
Finished: Yes
Enclosed: Yes
Contiguous:
Yes
Permitted: Yes
Wet Space: No
Addition: No
Conversion: No

**10 Aspen Road, Shrewsbury, Worcester County,
Massachusetts, United States, 01545**

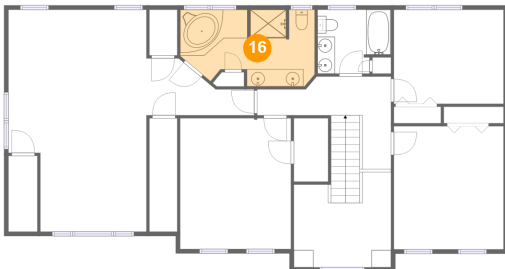
15 Floor 3 - Bedroom



Dimensions: 12'8" x 10'10"
Area: 137 sq. ft
Counted as Living Area:
Yes

Heated: Yes
Finished: Yes
Enclosed: Yes
Contiguous:
Yes
Permitted: Yes
Wet Space: No
Addition: No
Conversion: No

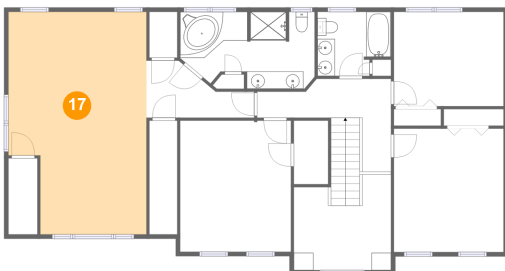
16 Floor 3 - Primary Bath



Dimensions: 15'6" x 8'10"
Area: 119 sq. ft
Counted as Living Area:
Yes

Heated: Yes
Finished: Yes
Enclosed: Yes
Contiguous:
Yes
Permitted: Yes
Wet Space: Yes
Addition: No
Conversion: No

17 Floor 3 - Primary Bedroom

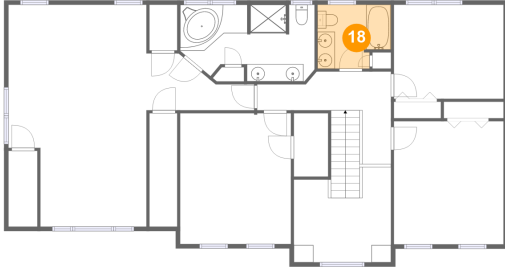


Dimensions: 15'10" x 25'6"
Area: 372 sq. ft
Counted as Living Area:
Yes

Heated: Yes
Finished: Yes
Enclosed: Yes
Contiguous:
Yes
Permitted: Yes
Wet Space: No
Addition: No
Conversion: No

10 Aspen Road, Shrewsbury, Worcester County, Massachusetts, United States, 01545

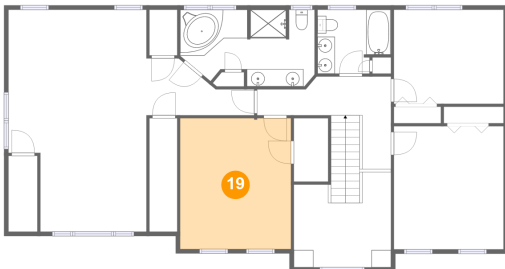
18 Floor 3 - Bath



Dimensions: 8'6" x 7'4"
Area: 57 sq. ft
Counted as Living Area:
Yes

Heated: Yes
Finished: Yes
Enclosed: Yes
Contiguous:
Yes
Permitted: Yes
Wet Space: Yes
Addition: No
Conversion: No

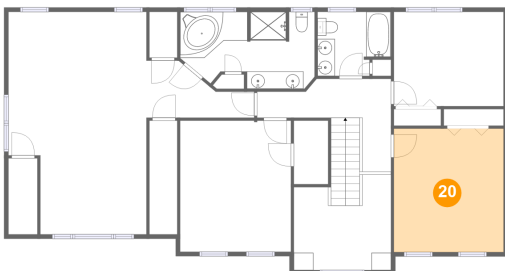
19 Floor 3 - Bedroom



Dimensions: 12'9" x 15'1"
Area: 192 sq. ft
Counted as Living Area:
Yes

Heated: Yes
Finished: Yes
Enclosed: Yes
Contiguous:
Yes
Permitted: Yes
Wet Space: No
Addition: No
Conversion: No

20 Floor 3 - Bedroom



Dimensions: 12'8" x 14'2"
Area: 179 sq. ft
Counted as Living Area:
Yes

Heated: Yes
Finished: Yes
Enclosed: Yes
Contiguous:
Yes
Permitted: Yes
Wet Space: No
Addition: No
Conversion: No

10 Aspen Road, Shrewsbury, Worcester County, Massachusetts, United States, 01545

21 Floor 3 - Open To Below



Dimensions: 11'2" x 9'6"
Area: 103 sq. ft
Counted as Living Area: No

Heated: No
Finished: No
Enclosed: No
Contiguous: Yes
Permitted: No
Wet Space: No
Addition: No
Conversion: No