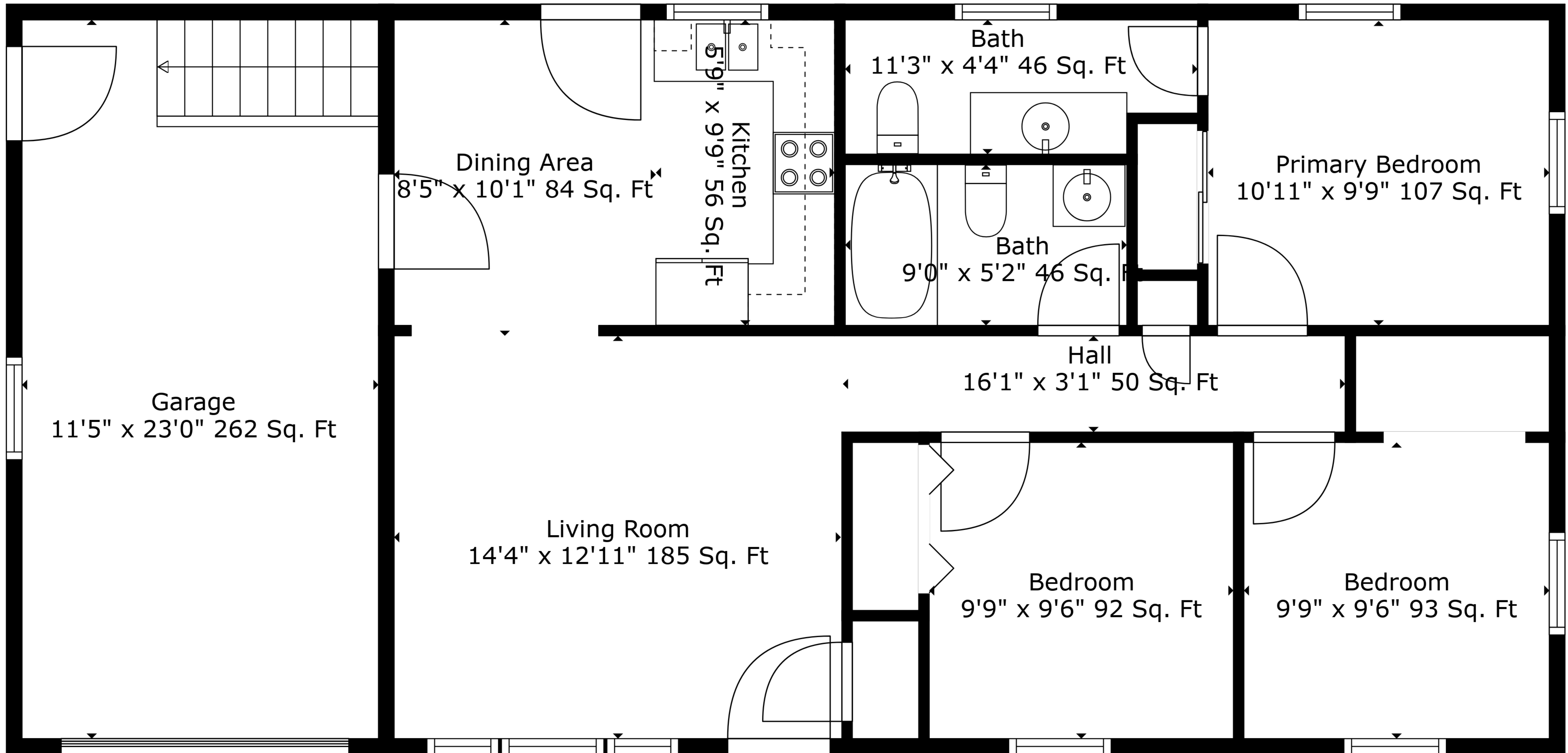


Basement
25'6" x 23'0" 437 Sq. Ft

Utility
23'2" x 23'0" 402 Sq. Ft

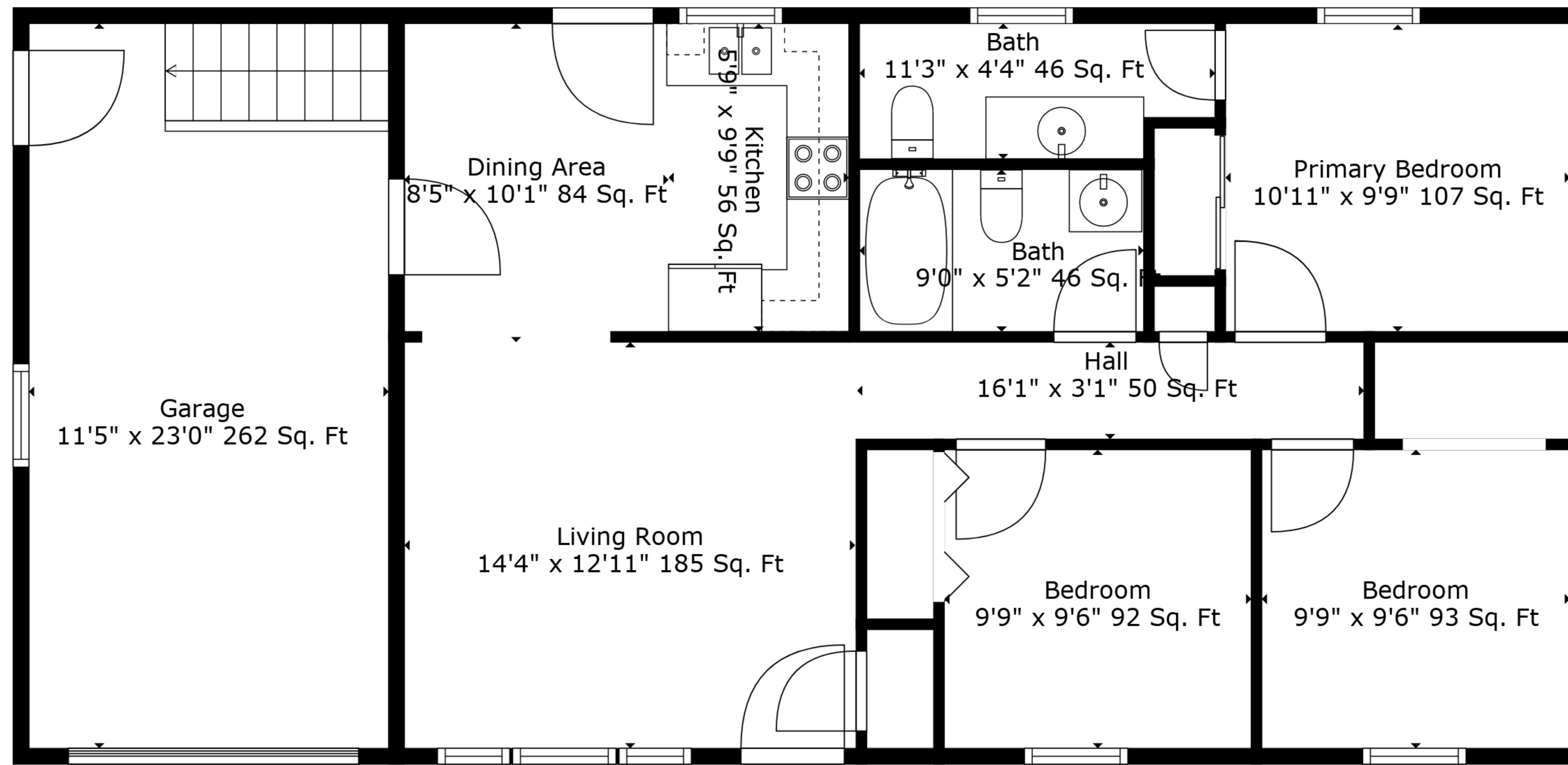
TOTAL: 1290 sq. ft
BELOW GROUND: 438 sq. ft, FLOOR 2: 852 sq. ft
EXCLUDED AREAS: BASEMENT: 437 sq. ft, GARAGE: 262 sq. ft

Measurements Are Deemed Highly Reliable But Not Guaranteed.

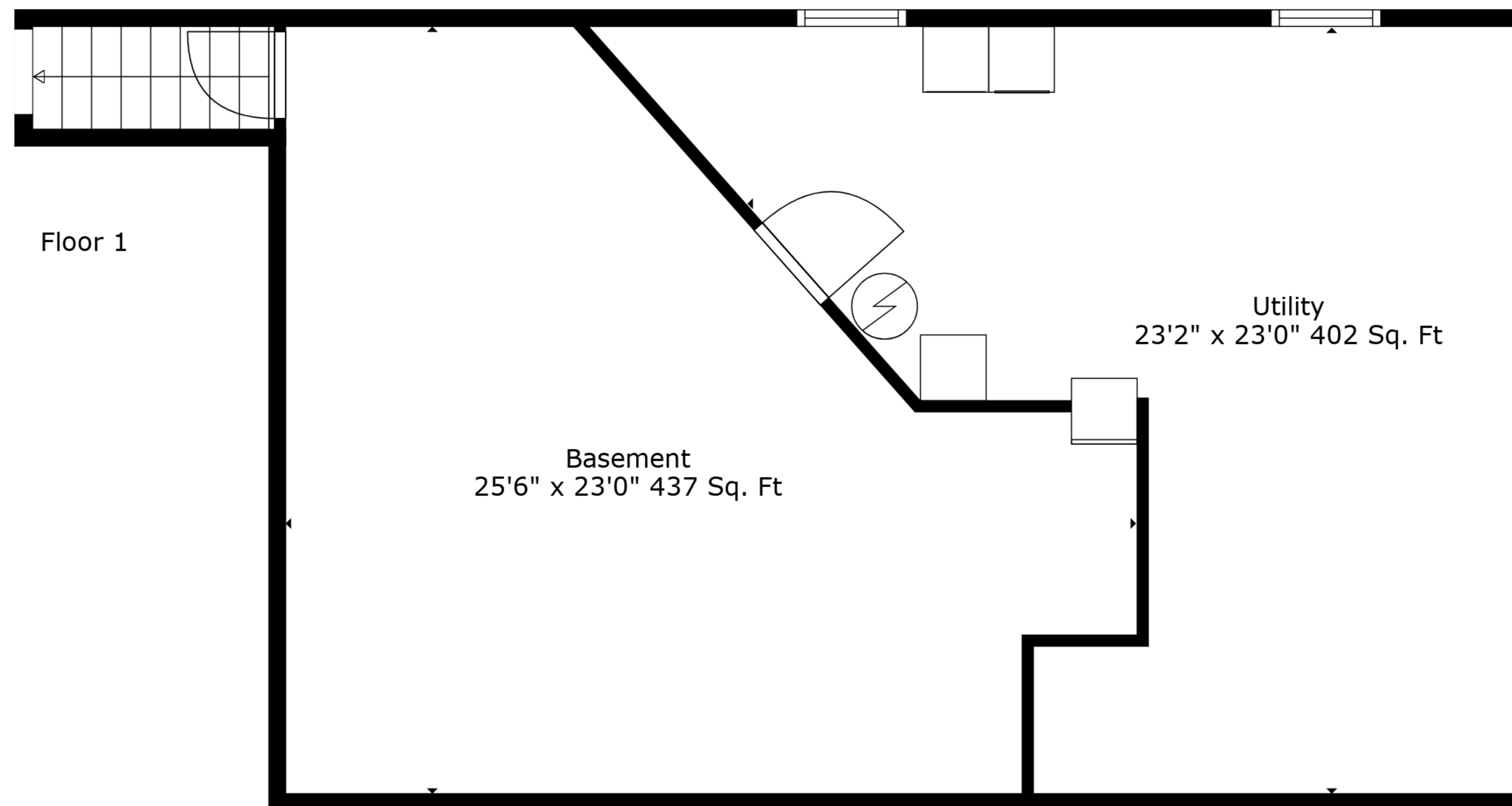


TOTAL: 1290 sq. ft
 BELOW GROUND: 438 sq. ft, FLOOR 2: 852 sq. ft
 EXCLUDED AREAS: BASEMENT: 437 sq. ft, GARAGE: 262 sq. ft

Measurements Are Deemed Highly Reliable But Not Guaranteed.



Floor 2



Floor 1

TOTAL: 1290 sq. ft
 BELOW GROUND: 438 sq. ft, FLOOR 2: 852 sq. ft
 EXCLUDED AREAS: BASEMENT: 437 sq. ft, GARAGE: 262 sq. ft

Measurements Are Deemed Highly Reliable But Not Guaranteed.