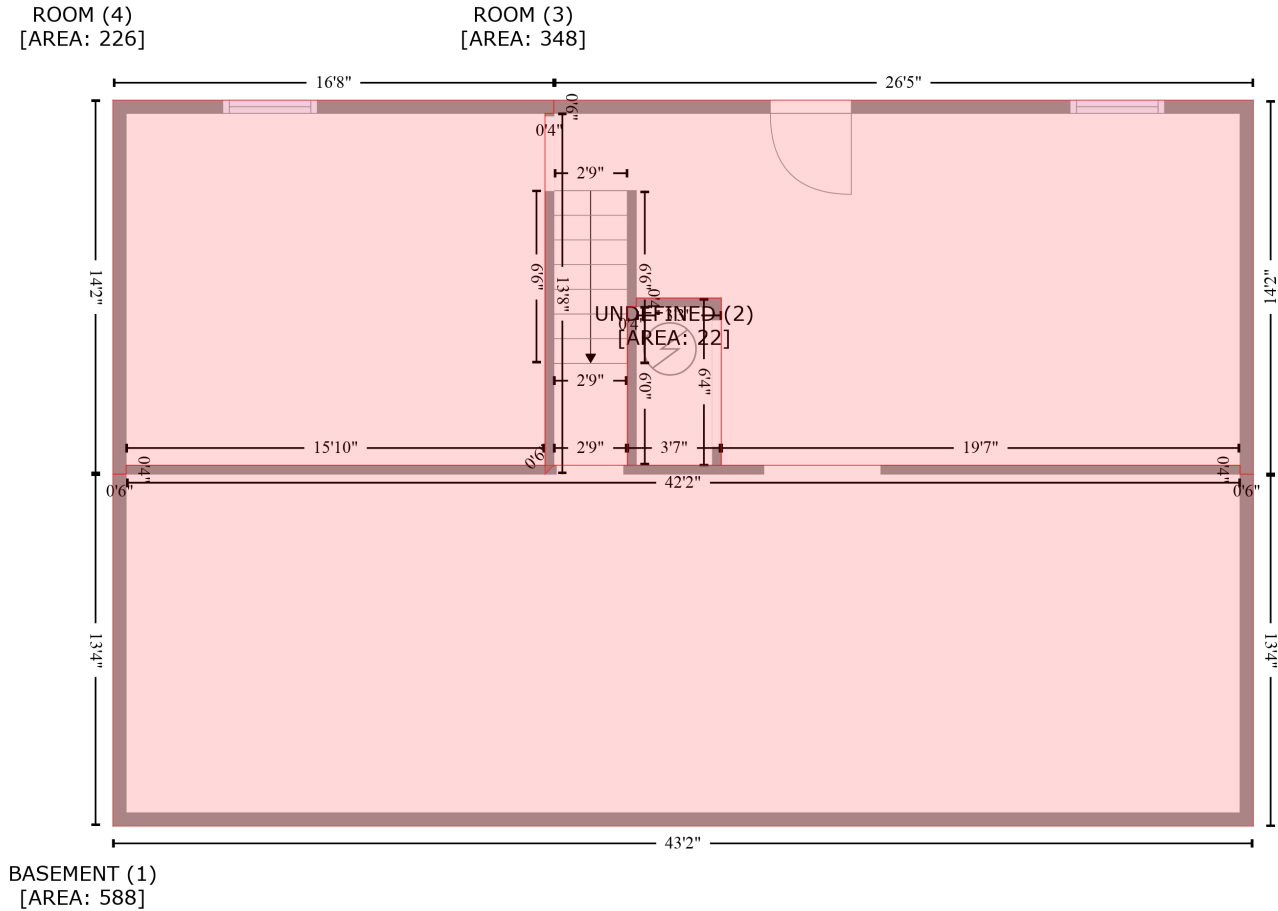


105 Walker Ct, Elizabethtown, KY, US

Gross Living Area: 1232 sq. ft

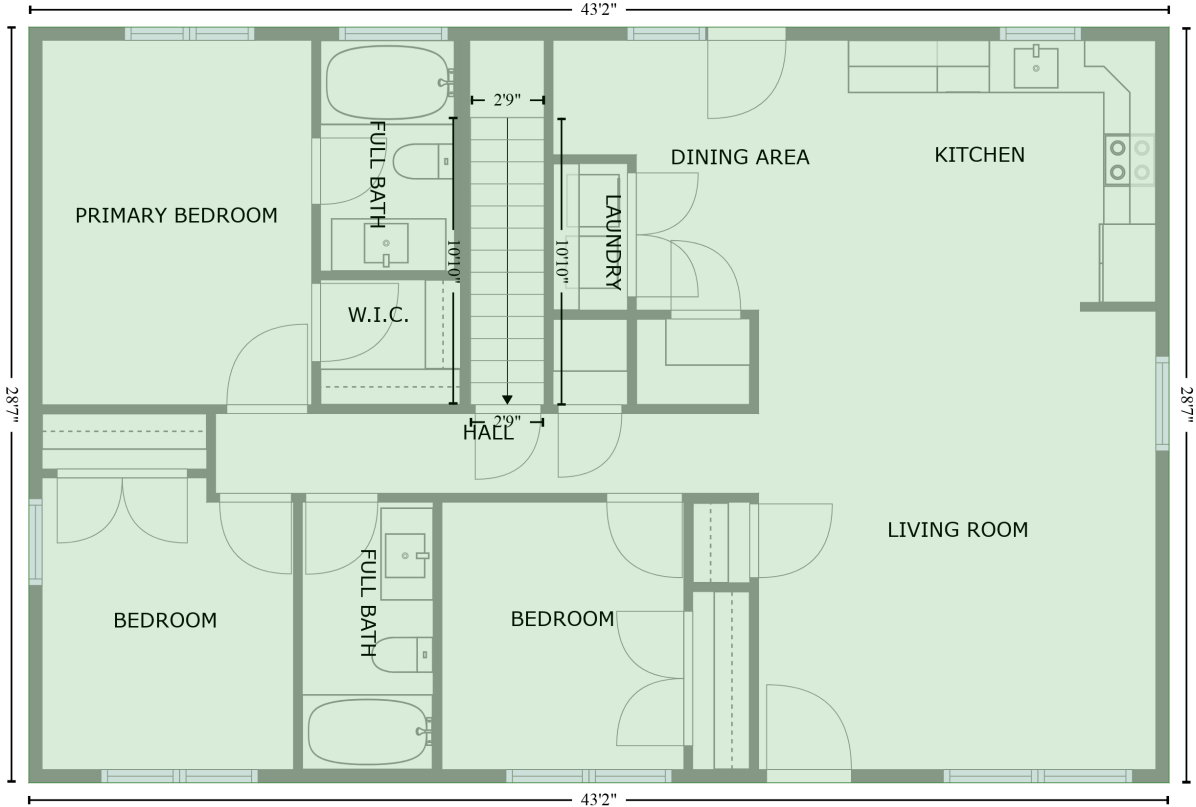


Space	Area (sq. ft)	Calculation <small>Coordinate Polygon Area Algorithm using inches</small>
BASEMENT (Non-living area)	588	$-((529.9 + 529.9) * (276.6 - 280.6) + (529.9 + 535.9) * (280.6 - 280.6) + (535.9 + 535.9) * (280.6 - 440.3) + (535.9 + 18.4) * (440.3 - 440.3) + (18.4 + 18.4) * (440.3 - 280.6) + (18.4 + 24.4) * (280.6 - 280.6) + (24.4 + 24.4) * (280.6 - 276.6) + (24.4 + 529.9) * (276.6 - 276.6)) * 0.5 * 0.00694$
UNDEFINED (Non-living area)	22	$-((294.5 + 294.5) * (200.7 - 276.6) + (294.5 + 251.9) * (276.6 - 276.6) + (251.9 + 251.9) * (276.6 - 204.7) + (251.9 + 255.9) * (204.7 - 204.7) + (255.9 + 255.9) * (204.7 - 200.7) + (255.9 + 294.5) * (200.7 - 200.7)) * 0.5 * 0.00694$
ROOM (Non-living area)	348	$-((535.9 + 535.9) * (110.9 - 280.6) + (535.9 + 529.9) * (280.6 - 280.6) + (529.9 + 529.9) * (280.6 - 276.6) + (529.9 + 294.5) * (276.6 - 276.6) + (294.5 + 294.5) * (276.6 - 200.7) + (294.5 + 255.9) * (200.7 - 200.7) + (255.9 + 255.9) * (200.7 - 204.7) + (255.9 + 251.9) * (204.7 - 204.7) + (251.9 + 251.9) * (204.7 - 276.6) + (251.9 + 218.5) * (276.6 - 276.6) + (218.5 + 214.5) * (276.6 - 280.6) + (214.5 + 214.5) * (280.6 - 116.9) + (214.5 + 218.5) * (116.9 - 116.9) + (218.5 + 218.5) * (116.9 - 110.9) + (218.5 + 535.9) * (110.9 - 110.9)) * 0.5 * 0.00694$
ROOM (Non-living area)	226	$-((218.5 + 218.5) * (110.9 - 116.9) + (218.5 + 214.5) * (116.9 - 116.9) + (214.5 + 214.5) * (116.9 - 276.6) + (214.5 + 24.4) * (276.6 - 276.6) + (24.4 + 24.4) * (276.6 - 280.6) + (24.4 + 18.4) * (280.6 - 280.6) + (18.4 + 18.4) * (280.6 - 110.9) + (18.4 + 218.5) * (110.9 - 110.9)) * 0.5 * 0.00694$

105 Walker Ct, Elizabethtown, KY, US

Gross Living Area: 1232 sq. ft

FLOOR 2
[AREA: 1232]



Space	Area (sq. ft)	Calculation <small>Coordinate Polygon Area Algorithm using inches</small>
FLOOR 2 (Living area)	1232	$-\left((535.9 + 535.9) * (110.9 - 453.6) + (535.9 + 18.4) * (453.6 - 453.6) + (18.4 + 18.4) * (453.6 - 110.9) + (18.4 + 535.9) * (110.9 - 110.9)\right) * 0.5 * 0.00694$