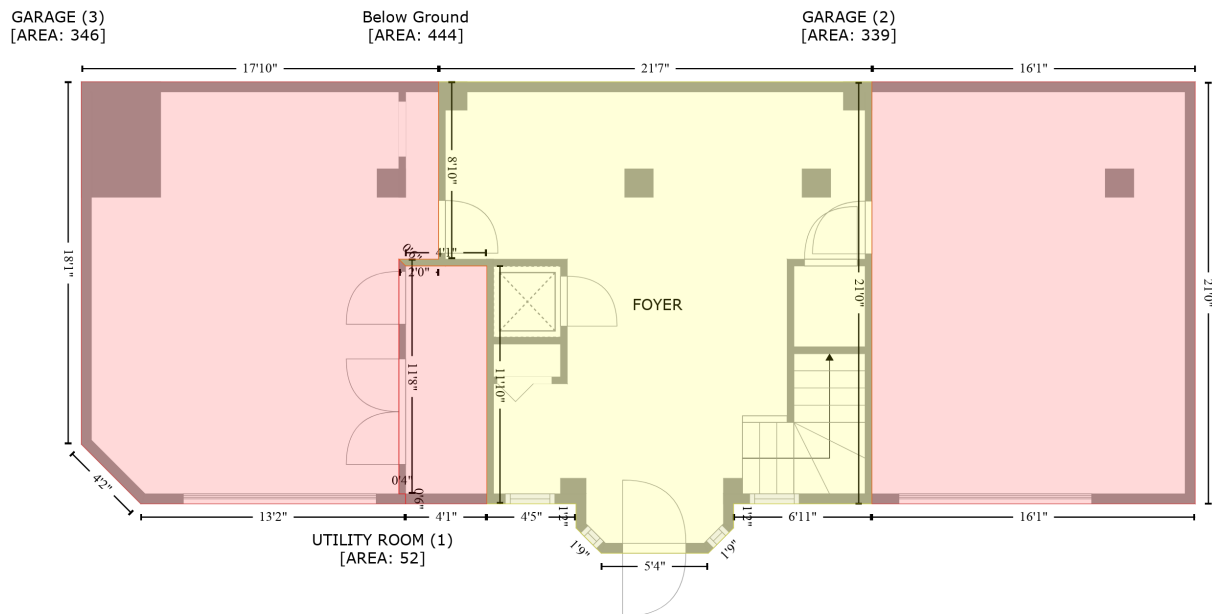


1198 Mandalay Point Road, 700 Island Way, Clearwater Beach, Pinellas County, Florida, United States, 33767

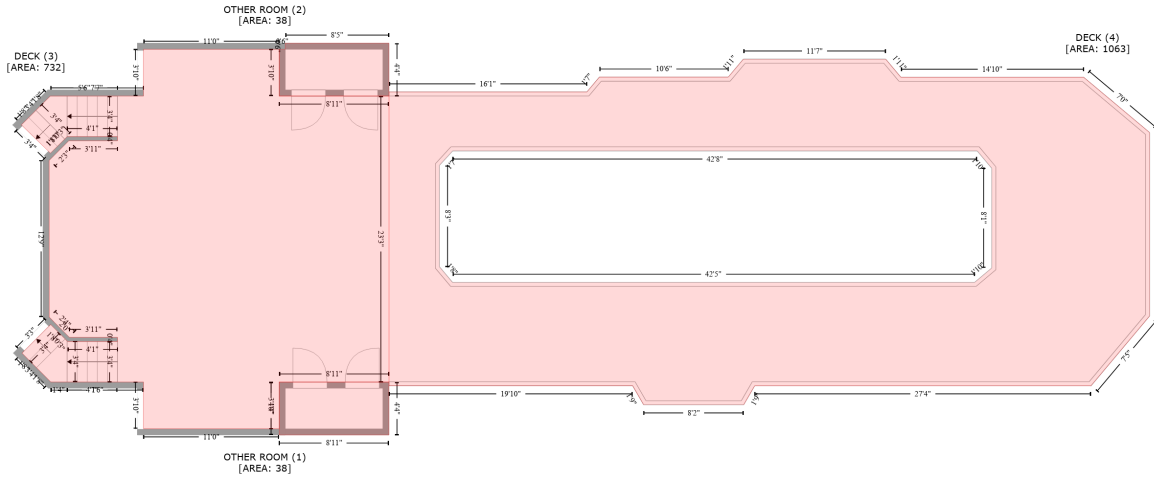
Gross Living Area: 3052 sq. ft



Space	Area (sq. ft)	Calculation <small>Coordinate Polygon Area Algorithm using inches</small>
Below Ground (Living area)	444	$-((618.9 + 618.9) * (604.3 - 856.5) + (618.9 + 536.1) * (856.5 - 856.5) + (536.1 + 536.1) * (856.5 - 870.8) + (536.1 + 521) * (870.8 - 886) + (521 + 457) * (886 - 886) + (457 + 441.8) * (886 - 870.8) + (441.8 + 441.8) * (870.8 - 856.5) + (441.8 + 388.5) * (856.5 - 856.5) + (388.5 + 388.5) * (856.5 - 714.3) + (388.5 + 339.9) * (714.3 - 714.3) + (339.9 + 335.9) * (714.3 - 710.3) + (335.9 + 359.6) * (710.3 - 710.3) + (359.6 + 359.6) * (710.3 - 604.3) + (359.6 + 618.9) * (604.3 - 604.3)) * 0.5 * 0.00694$
UTILITY ROOM (Non-living area)	52	$-((335.9 + 339.9) * (710.3 - 714.3) + (339.9 + 388.5) * (714.3 - 714.3) + (388.5 + 388.5) * (714.3 - 856.5) + (388.5 + 339.9) * (856.5 - 856.5) + (339.9 + 339.9) * (856.5 - 850.5) + (339.9 + 335.9) * (850.5 - 850.5) + (335.9 + 335.9) * (850.5 - 710.3)) * 0.5 * 0.00694$
GARAGE (Non-living area)	339	$-((812.4 + 812.4) * (604.3 - 856.5) + (812.4 + 618.9) * (856.5 - 856.5) + (618.9 + 618.9) * (856.5 - 604.3) + (618.9 + 812.4) * (604.3 - 604.3)) * 0.5 * 0.00694$
GARAGE (Non-living area)	346	$-((359.6 + 359.6) * (604.3 - 710.3) + (359.6 + 335.9) * (710.3 - 710.3) + (335.9 + 335.9) * (710.3 - 850.5) + (335.9 + 339.9) * (850.5 - 850.5) + (339.9 + 339.9) * (850.5 - 856.5) + (339.9 + 181.5) * (856.5 - 856.5) + (181.5 + 145.9) * (856.5 - 820.9) + (145.9 + 145.9) * (820.9 - 604.3) + (145.9 + 359.6) * (604.3 - 604.3)) * 0.5 * 0.00694$

1198 Mandalay Point Road, 700 Island Way, Clearwater Beach, Pinellas County, Florida, United States, 33767

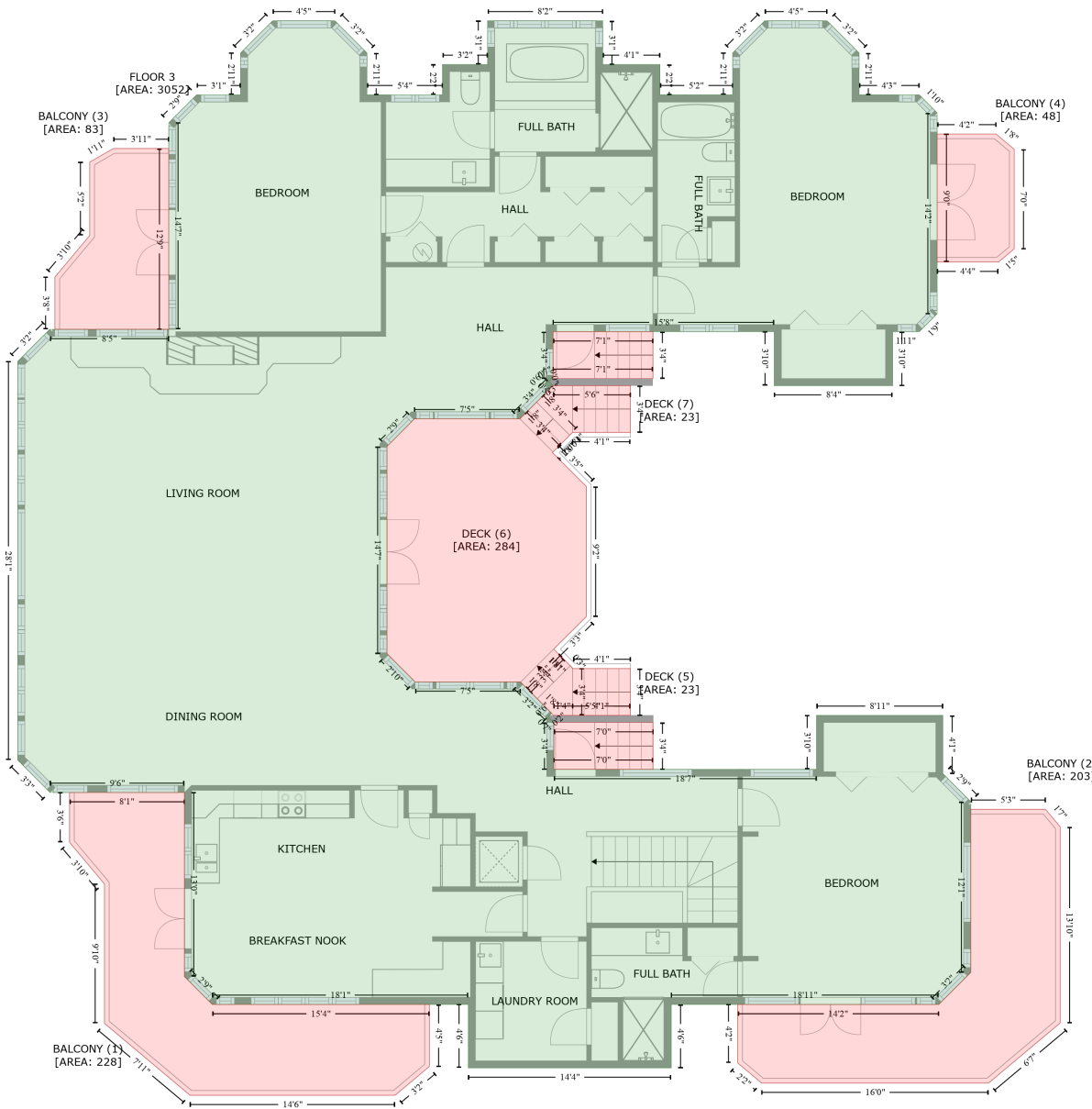
Gross Living Area: 3052 sq. ft



Space	Area (sq. ft)	Calculation <small>Coordinate Polygon Area Algorithm using inches</small>
OTHER ROOM (Non-living area)	38	$-((788.7 + 788.7) * (611.9 - 663.5) + (788.7 + 681.6) * (663.5 - 663.5) + (681.6 + 681.6) * (663.5 - 611.9) + (681.6 + 788.7) * (611.9 - 611.9)) * 0.5 * 0.00694$
OTHER ROOM (Non-living area)	38	$-((788.7 + 788.7) * (281 - 332.6) + (788.7 + 681.6) * (332.6 - 332.6) + (681.6 + 681.6) * (332.6 - 287) + (681.6 + 687.6) * (287 - 287) + (687.6 + 687.6) * (287 - 281) + (687.6 + 788.7) * (281 - 281)) * 0.5 * 0.00694$
DECK (Non-living area)	732	$-((681.6 + 681.6) * (287 - 332.6) + (681.6 + 788.7) * (332.6 - 332.6) + (788.7 + 788.7) * (332.6 - 611.8) + (788.7 + 681.6) * (611.8 - 611.9) + (681.6 + 681.6) * (611.9 - 657.5) + (681.6 + 549.3) * (657.5 - 657.5) + (549.3 + 549.3) * (657.5 - 611.9) + (549.3 + 458.9) * (611.9 - 611.9) + (458.9 + 430.8) * (611.9 - 583.6) + (430.8 + 458.6) * (583.6 - 555.6) + (458.6 + 475.3) * (555.6 - 572.2) + (475.3 + 524) * (572.2 - 572.2) + (524 + 524) * (572.2 - 568.2) + (524 + 477) * (568.2 - 568.2) + (477 + 457.4) * (568.2 - 548.5) + (457.4 + 457.2) * (548.5 - 395.6) + (457.2 + 476.5) * (395.6 - 376.3) + (476.5 + 524) * (376.3 - 376.3) + (524 + 524) * (376.3 - 372.3) + (524 + 474.9) * (372.3 - 372.3) + (474.9 + 458.5) * (372.3 - 388.4) + (458.5 + 430.2) * (388.4 - 360.8) + (430.2 + 458.3) * (360.8 - 332.6) + (458.3 + 549.3) * (332.6 - 332.6) + (549.3 + 549.3) * (332.6 - 287) + (549.3 + 681.6) * (287 - 287)) * 0.5 * 0.00694$
DECK (Non-living area)	1063	$-((1273.2 + 1288.1) * (296.5 - 314.3) + (1288.1 + 1466.3) * (314.3 - 314.3) + (1466.3 + 1530.8) * (314.3 - 368.4) + (1530.8 + 1530.8) * (368.4 - 547.2) + (1530.8 + 1473.5) * (547.2 - 615.5) + (1473.5 + 1145.4) * (615.5 - 615.5) + (1145.4 + 1134.7) * (615.5 - 634.1) + (1134.7 + 1037.2) * (634.1 - 634.1) + (1037.2 + 1026.4) * (634.1 - 615.5) + (1026.4 + 788.7) * (615.5 - 615.5) + (788.7 + 788.7) * (615.5 - 328.6) + (788.7 + 981.8) * (328.6 - 328.6) + (981.8 + 993.9) * (328.6 - 314.1) + (993.9 + 1119.7) * (314.1 - 314.1) + (1119.7 + 1134.4) * (314.1 - 296.5) + (1134.4 + 1273.2) * (296.5 - 296.5)) * 0.5 * 0.00694 - ((1362.5 + 850.9) * (386.2 - 386.2) + (850.9 + 838) * (386.2 - 400.3) + (838 + 838) * (400.3 - 499.2) + (838 + 850.8) * (499.2 - 514.5) + (850.8 + 1359.9) * (514.5 - 514.5) + (1359.9 + 1376.7) * (514.5 - 500.4) + (1376.7 + 1376.7) * (500.4 - 403.2) + (1376.7 + 1362.5) * (403.2 - 386.2)) * 0.5 * 0.00694$

1198 Mandalay Point Road, 700 Island Way, Clearwater Beach, Pinellas County, Florida, United States, 33767

Gross Living Area: 3052 sq. ft



Space	Area (sq. ft)	Calculation
FLOOR 3 (Living area)	3052	Coordinate Polygon Area Algorithm using inches $ \begin{aligned} & -((273.4 + 300.6) * (23.9 - 51.1) + (300.6 + 300.6) * (51.1 - 86.5) + (300.6 + 364.6) * (86.5 - 86.5) \\ & + (364.6 + 364.6) * (86.5 - 60.9) + (364.6 + 402.8) * (60.9 - 60.9) + (402.8 + 402.8) * (60.9 - 23.9) \\ & + (402.8 + 500.4) * (23.9 - 23.9) + (500.4 + 500.4) * (23.9 - 60.9) + (500.4 + 548.9) * (60.9 - 60.9) \\ & + (548.9 + 548.9) * (60.9 - 86.5) + (548.9 + 610.6) * (86.5 - 86.5) + (610.6 + 610.6) * (86.5 - 51.1) \\ & + (610.6 + 637.7) * (51.1 - 23.9) + (637.7 + 690.5) * (23.9 - 23.9) + (690.5 + 717.7) * (23.9 - 51.1) \\ & + (717.7 + 717.7) * (51.1 - 86.5) + (717.7 + 768.7) * (86.5 - 86.5) + (768.7 + 783.9) * (86.5 - 101.8) \\ & + (783.9 + 783.9) * (101.8 - 271.9) + (783.9 + 768.7) * (271.9 - 287) + (768.7 + 746.1) * \end{aligned} $

1198 Mandalay Point Road, 700 Island Way, Clearwater Beach, Pinellas County, Florida, United States, 33767

Gross Living Area: 3052 sq. ft

Space	Area (sq. ft)	Calculation <small>Coordinate Polygon Area Algorithm using inches</small>
		$(287 - 287) + (746.1 + 746.1) * (287 - 332.6) + (746.1 + 645.9) * (332.6 - 332.6) + (645.9 + 645.9) * (332.6 - 287) + (645.9 + 458.3) * (287 - 287) + (458.3 + 458.3) * (287 - 326.6) + (458.3 + 452.3) * (326.6 - 330.2) + (452.3 + 448.2) * (330.2 - 334.4) + (448.2 + 452.4) * (334.4 - 330.3) + (452.4 + 452.3) * (330.3 - 330.2) + (452.3 + 454.7) * (330.2 - 328.7) + (454.7 + 458.3) * (328.7 - 332.6) + (458.3 + 430.2) * (332.6 - 360.8) + (430.2 + 340.8) * (360.8 - 360.8) + (340.8 + 329.3) * (360.8 - 372.3) + (329.3 + 317.5) * (372.3 - 384.2) + (317.5 + 317.5) * (384.2 - 559.6) + (317.5 + 329.5) * (559.6 - 571.7) + (329.5 + 341.3) * (571.7 - 583.4) + (341.3 + 430.6) * (583.4 - 583.4) + (430.6 + 444.9) * (583.4 - 597.6) + (444.9 + 457.2) * (597.6 - 610.1) + (457.2 + 452.9) * (610.1 - 614.3) + (452.9 + 454.3) * (614.3 - 613) + (454.3 + 458.9) * (613 - 617.9) + (458.9 + 458.9) * (617.9 - 657.5) + (458.9 + 681.6) * (657.5 - 657.5) + (681.6 + 681.6) * (657.5 - 611.9) + (681.6 + 788.7) * (611.9 - 611.9) + (788.7 + 788.7) * (611.9 - 661.1) + (788.7 + 812.4) * (661.1 - 684.8) + (812.4 + 812.4) * (684.8 - 829.4) + (812.4 + 785.2) * (829.4 - 856.5) + (829.4 - 856.5) * (856.5 - 856.5) + (856.5 + 558.5) * (856.5 - 910.2) + (558.5 + 386.5) * (910.2 - 910.2) + (386.5 + 386.5) * (910.2 - 856.5) + (386.5 + 169.5) * (856.5 - 856.5) + (169.5 + 145.9) * (856.5 - 832.9) + (145.9 + 145.9) * (832.9 - 677.1) + (145.9 + 32) * (677.1 - 677.1) + (32 + 4.6) * (677.1 - 649.6) + (4.6 + 4.6) * (649.6 - 312.3) + (4.6 + 31.8) * (312.3 - 285.1) + (31.8 + 132.6) * (285.1 - 285.1) + (132.6 + 132.6) * (285.1 - 110.2) + (132.6 + 156.2) * (110.2 - 86.5) + (156.2 + 193.5) * (86.5 - 86.5) + (193.5 + 193.5) * (86.5 - 51.1) + (193.5 + 220.6) * (51.1 - 23.9) + (220.6 + 273.4) * (23.9 - 23.9) * 0.5 * 0.00694$
BALCONY (Non-living area)	228	$-((145.9 + 145.9) * (677.1 - 832.9) + (145.9 + 169.5) * (832.9 - 856.5) + (169.5 + 353.5) * (856.5 - 856.5) + (353.5 + 353.5) * (856.5 - 909) + (353.5 + 324.5) * (909 - 933.4) + (324.5 + 150.6) * (933.4 - 933.4) + (150.6 + 78.1) * (933.4 - 872.5) + (78.1 + 78.1) * (872.5 - 754.5) + (78.1 + 48.5) * (754.5 - 719.3) + (48.5 + 48.5) * (719.3 - 677.1) + (48.5 + 145.9) * (677.1 - 677.1)) * 0.5 * 0.00694$
BALCONY (Non-living area)	203	$-((875.7 + 888.2) * (691.3 - 706.2) + (888.2 + 888.2) * (706.2 - 872.1) + (888.2 + 827.5) * (872.1 - 923.1) + (827.5 + 635.2) * (923.1 - 923.1) + (635.2 + 614.9) * (923.1 - 906.1) + (614.9 + 614.9) * (906.1 - 856.5) + (614.9 + 785.2) * (856.5 - 856.5) + (785.2 + 812.4) * (856.5 - 829.4) + (812.4 + 812.4) * (829.4 - 691.3) + (812.4 + 875.7) * (691.3 - 691.3)) * 0.5 * 0.00694$
BALCONY (Non-living area)	83	$-((132.6 + 132.6) * (132 - 285.1) + (132.6 + 36.1) * (285.1 - 285.1) + (36.1 + 36.1) * (285.1 - 240.8) + (36.1 + 65.6) * (240.8 - 205.6) + (65.6 + 65.6) * (205.6 - 143.5) + (65.6 + 85.6) * (143.5 - 132) + (85.6 + 132.6) * (132 - 132)) * 0.5 * 0.00694$
BALCONY (Non-living area)	48	$-((833.9 + 849.2) * (119.7 - 132.5) + (849.2 + 849.2) * (132.5 - 216.9) + (849.2 + 835.9) * (216.9 - 228.1) + (835.9 + 783.9) * (228.1 - 228.1) + (783.9 + 783.9) * (228.1 - 119.7) + (783.9 + 833.9) * (119.7 - 119.7)) * 0.5 * 0.00694$
DECK (Non-living area)	23	$-((543.2 + 543.2) * (617.9 - 657.5) + (543.2 + 458.9) * (657.5 - 657.5) + (458.9 + 458.9) * (657.5 - 617.9) + (458.9 + 543.2) * (617.9 - 617.9)) * 0.5 * 0.00694$
DECK (Non-living area)	284	$-((524 + 524) * (332.6 - 372.3) + (524 + 474.9) * (372.3 - 372.3) + (474.9 + 457.8) * (372.3 - 389.4) + (457.8 + 486.6) * (389.4 - 418.1) + (486.6 + 486.6) * (418.1 - 528.1) + (486.6 + 458.9) * (528.1 - 555.7) + (458.9 + 475.3) * (555.7 - 572.2) + (475.3 + 524) * (572.2 - 572.2) + (524 + 524) * (572.2 - 611.9) + (524 + 458.9) * (611.9 - 611.9) + (458.9 + 430.6) * (611.9 - 583.4) + (430.6 + 341.3) * (583.4 - 583.4) + (341.3 + 317.5) * (583.4 - 559.6) + (317.5 + 317.5) * (559.6 - 384.2) + (317.5 + 340.8) * (384.2 - 360.8) + (340.8 + 430.2) * (360.8 - 360.8) + (430.2 + 458.3) * (360.8 - 332.6) + (458.3 + 524) * (332.6 - 332.6)) * 0.5 * 0.00694$
DECK (Non-living area)	23	$-((543.1 + 543.1) * (287 - 326.6) + (543.1 + 458.3) * (326.6 - 326.6) + (458.3 + 458.3) * (326.6 - 287) + (458.3 + 543.1) * (287 - 287)) * 0.5 * 0.00694$