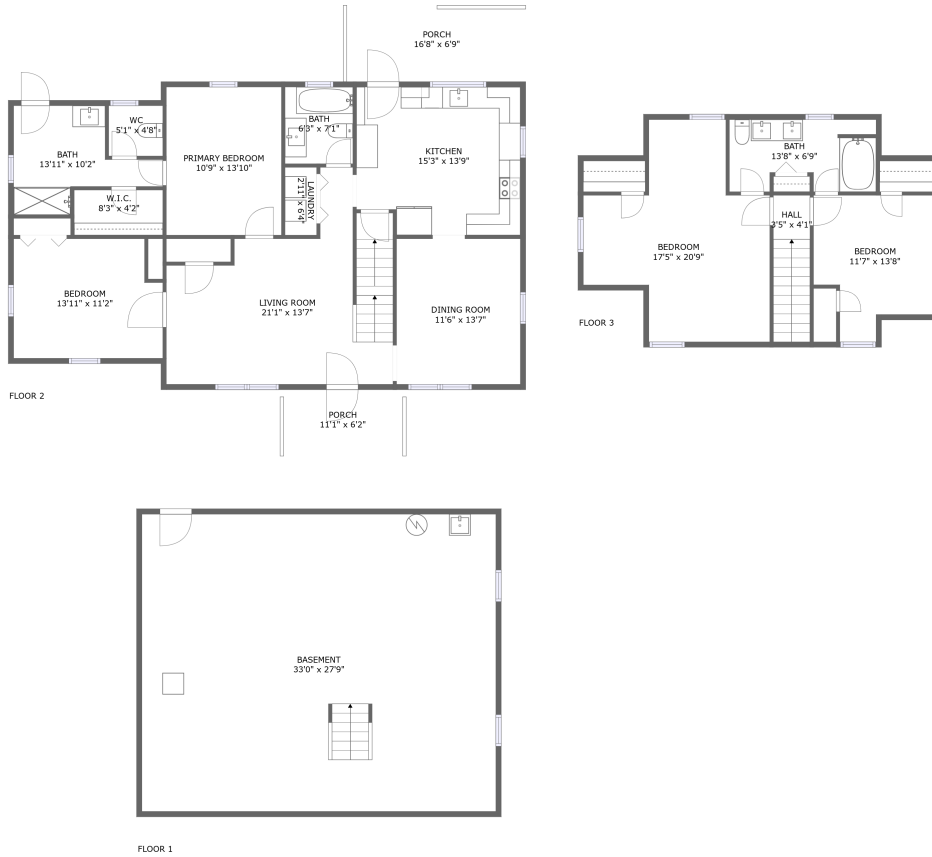


# 1288 Screechum Hollow Road, Bedford, Bedford County, Virginia, United States, 24523



## Property Summary

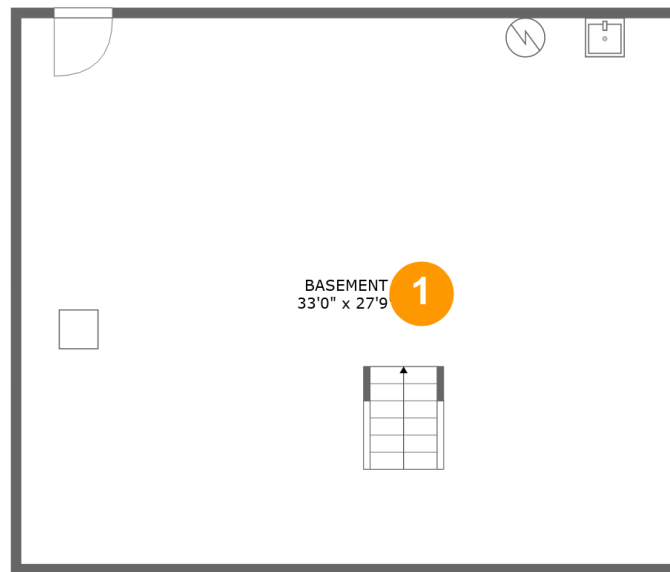
**0** garages    **4** bedrooms    **3** bathrooms    **0** half baths

**3** floors

**1,894** Gross Living Area sqft

**3,131** total sqft

**1288 Screechum Hollow Road, Bedford, Bedford  
County, Virginia, United States, 24523**



**Room Dimensions**

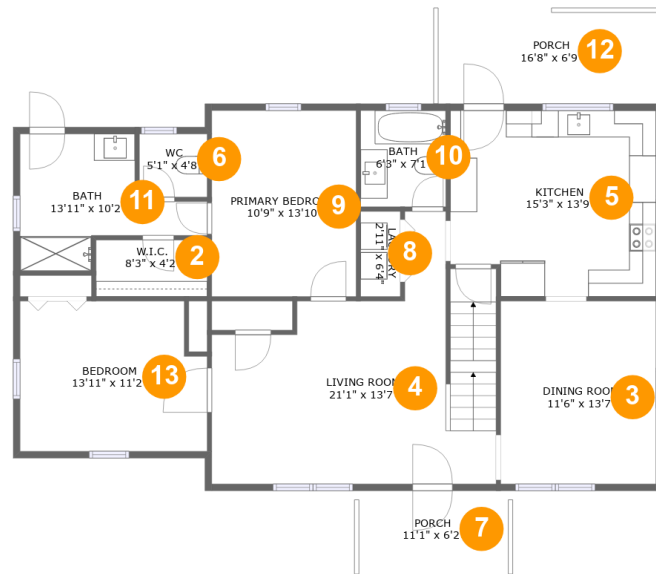
**Floor 1**

**Total sqft: 977**

**Living area: 0**

#	Room name	Dimensions	Area (sqft)	Counted as Living Area
1	Basement	33'0" x 27'9"	915 sq. ft	No

# 1288 Screechum Hollow Road, Bedford, Bedford County, Virginia, United States, 24523



## Room Dimensions

Floor 2

Total sqft: 1508

Living area: 1326

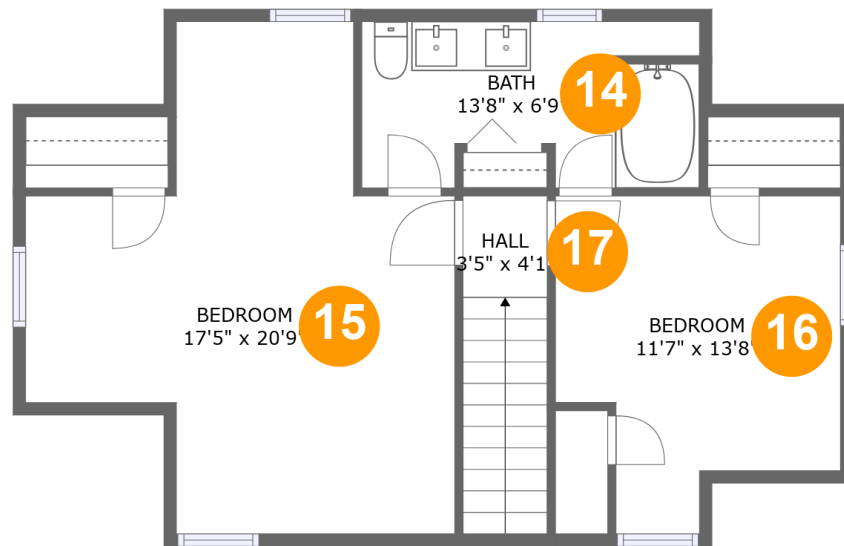
#	Room name	Dimensions	Area (sqft)	Counted as Living Area
2	W.i.c.	8'3" x 4'2"	35 sq. ft	Yes
3	Dining Room	11'6" x 13'7"	157 sq. ft	Yes
4	Living Room	21'1" x 13'7"	297 sq. ft	Yes
5	Kitchen	15'3" x 13'9"	202 sq. ft	Yes
6	Wc	5'1" x 4'8"	24 sq. ft	Yes
7	Porch	11'1" x 6'2"	69 sq. ft	No
8	Laundry	2'11" x 6'4"	19 sq. ft	Yes
9	Primary Bedroom	10'9" x 13'10"	148 sq. ft	Yes
10	Bath	6'3" x 7'1"	45 sq. ft	Yes
11	Bath	13'11" x 10'2"	92 sq. ft	Yes
12	Porch	16'8" x 6'9"	113 sq. ft	No

Scan captured on Thu, 19 Sep 2024 13:21:23 GMT

Information is calculated by CubiCasa technology; deemed highly reliable but not guaranteed.

**1288 Screechum Hollow Road, Bedford, Bedford  
County, Virginia, United States, 24523**

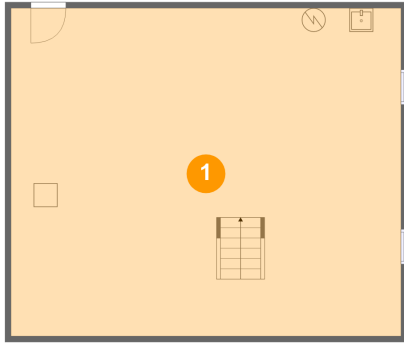
#	Room name	Dimensions	Area (sqft)	Counted as Living Area
13	Bedroom	13'11" x 11'2"	148 sq. ft	Yes

**1288 Screechum Hollow Road, Bedford, Bedford  
County, Virginia, United States, 24523****Room Dimensions****Floor 3****Total sqft: 646****Living area: 568**

#	Room name	Dimensions	Area (sqft)	Counted as Living Area
14	Bath	13'8" x 6'9"	83 sq. ft	Yes
15	Bedroom	17'5" x 20'9"	225 sq. ft	Yes
16	Bedroom	11'7" x 13'8"	123 sq. ft	Yes
17	Hall	3'5" x 4'1"	47 sq. ft	Yes

# 1288 Screechum Hollow Road, Bedford, Bedford County, Virginia, United States, 24523

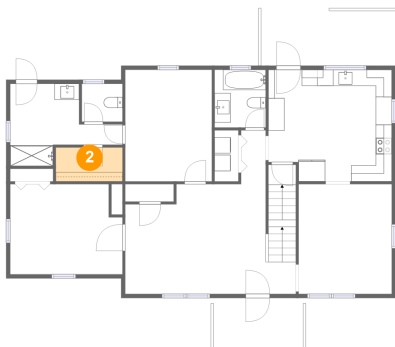
## 1 Floor 1 - Basement



Dimensions: 33'0" x 27'9"  
Area: 915 sq. ft  
Counted as Living Area: No

Heated: Yes  
Finished: No  
Enclosed: Yes  
Contiguous: Yes  
Permitted: Yes  
Wet Space: No  
Addition: No  
Conversion: No

## 2 Floor 2 - W.i.c.

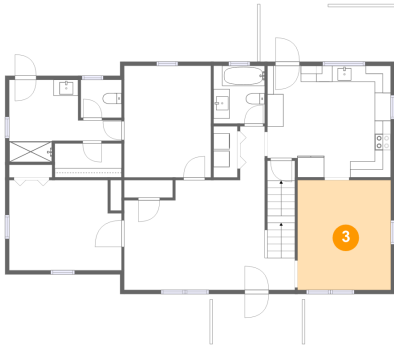


Dimensions: 8'3" x 4'2"  
Area: 35 sq. ft  
Counted as Living Area:  
Yes

Heated: Yes  
Finished: Yes  
Enclosed: Yes  
Contiguous:  
Yes  
Permitted: Yes  
Wet Space: No  
Addition: No  
Conversion: No

# 1288 Screechum Hollow Road, Bedford, Bedford County, Virginia, United States, 24523

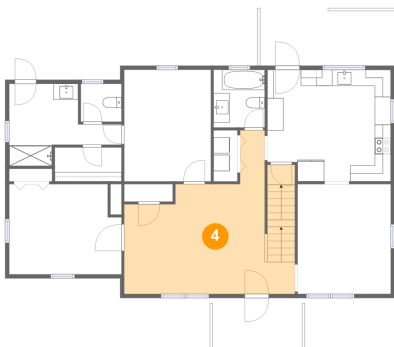
## 3 Floor 2 - Dining Room



Dimensions: 11'6" x 13'7"  
Area: 157 sq. ft  
Counted as Living Area:  
Yes

Heated: Yes  
Finished: Yes  
Enclosed: Yes  
Contiguous:  
Yes  
Permitted: Yes  
Wet Space: No  
Addition: No  
Conversion: No

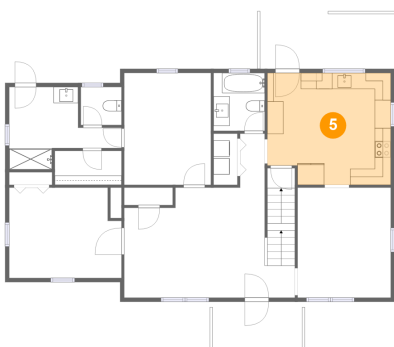
## 4 Floor 2 - Living Room



Dimensions: 21'1" x 13'7"  
Area: 297 sq. ft  
Counted as Living Area:  
Yes

Heated: Yes  
Finished: Yes  
Enclosed: Yes  
Contiguous:  
Yes  
Permitted: Yes  
Wet Space: No  
Addition: No  
Conversion: No

## 5 Floor 2 - Kitchen

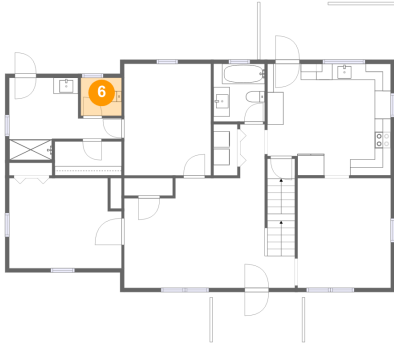


Dimensions: 15'3" x 13'9"  
Area: 202 sq. ft  
Counted as Living Area:  
Yes

Heated: Yes  
Finished: Yes  
Enclosed: Yes  
Contiguous:  
Yes  
Permitted: Yes  
Wet Space: No  
Addition: No  
Conversion: No

# 1288 Screechum Hollow Road, Bedford, Bedford County, Virginia, United States, 24523

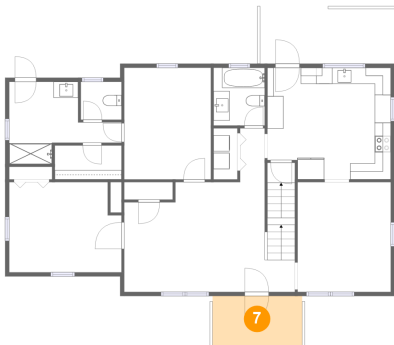
## 6 Floor 2 - Wc



Dimensions: 5'1" x 4'8"  
Area: 24 sq. ft  
Counted as Living Area: Yes

Heated: Yes  
Finished: Yes  
Enclosed: Yes  
Contiguous: Yes  
Permitted: Yes  
Wet Space: Yes  
Addition: No  
Conversion: No

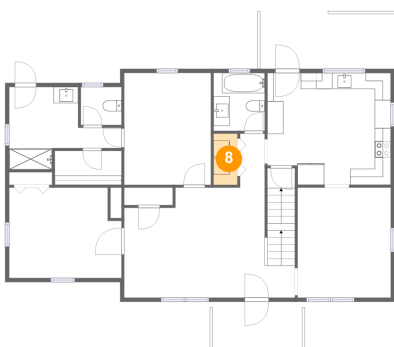
## 7 Floor 2 - Porch



Dimensions: 11'1" x 6'2"  
Area: 69 sq. ft  
Counted as Living Area: No

Heated: No  
Finished: Yes  
Enclosed: No  
Contiguous: Yes  
Permitted: Yes  
Wet Space: No  
Addition: No  
Conversion: No

## 8 Floor 2 - Laundry



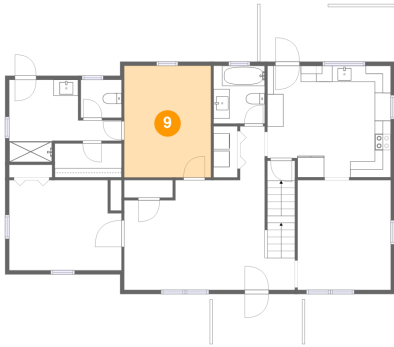
Dimensions: 2'11" x 6'4"  
Area: 19 sq. ft  
Counted as Living Area: Yes

Heated: Yes  
Finished: Yes  
Enclosed: Yes  
Contiguous: Yes  
Permitted: Yes  
Wet Space: No  
Addition: No  
Conversion: No



# 1288 Screechum Hollow Road, Bedford, Bedford County, Virginia, United States, 24523

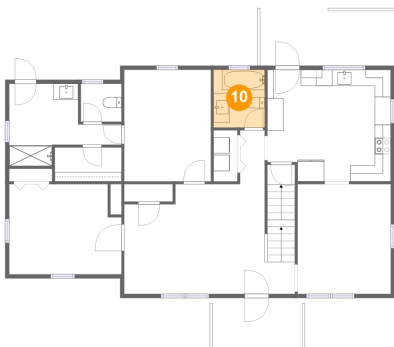
## 9 Floor 2 - Primary Bedroom



Dimensions: 10'9" x 13'10"  
Area: 148 sq. ft  
Counted as Living Area:  
Yes

Heated: Yes  
Finished: Yes  
Enclosed: Yes  
Contiguous:  
Yes  
Permitted: Yes  
Wet Space: No  
Addition: No  
Conversion: No

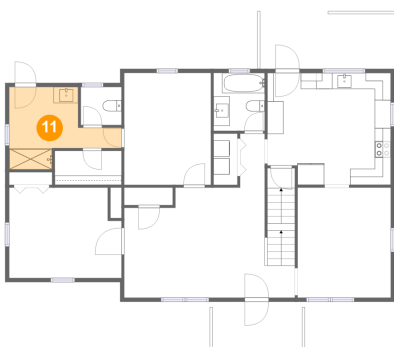
## 10 Floor 2 - Bath



Dimensions: 6'3" x 7'1"  
Area: 45 sq. ft  
Counted as Living Area:  
Yes

Heated: Yes  
Finished: Yes  
Enclosed: Yes  
Contiguous:  
Yes  
Permitted: Yes  
Wet Space: Yes  
Addition: No  
Conversion: No

## 11 Floor 2 - Bath

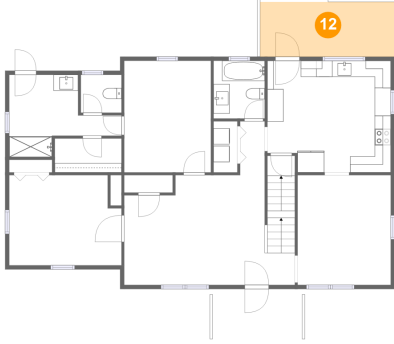


Dimensions: 13'11" x 10'2"  
Area: 92 sq. ft  
Counted as Living Area:  
Yes

Heated: Yes  
Finished: Yes  
Enclosed: Yes  
Contiguous:  
Yes  
Permitted: Yes  
Wet Space: Yes  
Addition: No  
Conversion: No

# 1288 Screechum Hollow Road, Bedford, Bedford County, Virginia, United States, 24523

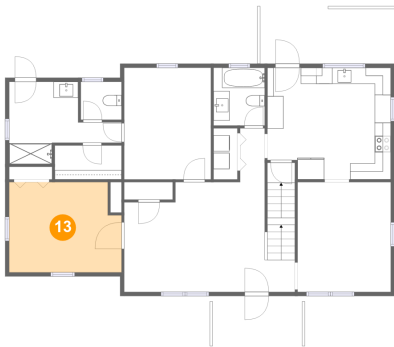
## 12 Floor 2 - Porch



Dimensions: 16'8" x 6'9"  
Area: 113 sq. ft  
Counted as Living Area: No

Heated: No  
Finished: Yes  
Enclosed: No  
Contiguous: Yes  
Permitted: Yes  
Wet Space: No  
Addition: No  
Conversion: No

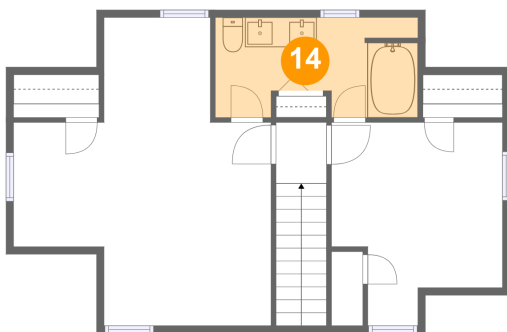
## 13 Floor 2 - Bedroom



Dimensions: 13'11" x 11'2"  
Area: 148 sq. ft  
Counted as Living Area: Yes

Heated: Yes  
Finished: Yes  
Enclosed: Yes  
Contiguous: Yes  
Permitted: Yes  
Wet Space: No  
Addition: No  
Conversion: No

## 14 Floor 3 - Bath

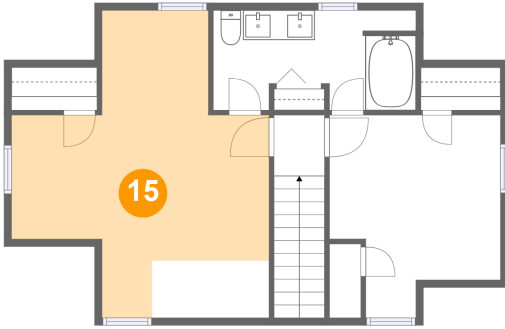


Dimensions: 13'8" x 6'9"  
Area: 83 sq. ft  
Counted as Living Area: Yes

Heated: Yes  
Finished: Yes  
Enclosed: Yes  
Contiguous: Yes  
Permitted: Yes  
Wet Space: Yes  
Addition: No  
Conversion: No

# 1288 Screechum Hollow Road, Bedford, Bedford County, Virginia, United States, 24523

## 15 Floor 3 - Bedroom



Dimensions: 17'5" x 20'9"  
Area: 225 sq. ft  
Counted as Living Area:  
Yes

Heated: Yes  
Finished: Yes  
Enclosed: Yes  
Contiguous:  
Yes  
Permitted: Yes  
Wet Space: No  
Addition: No  
Conversion: No

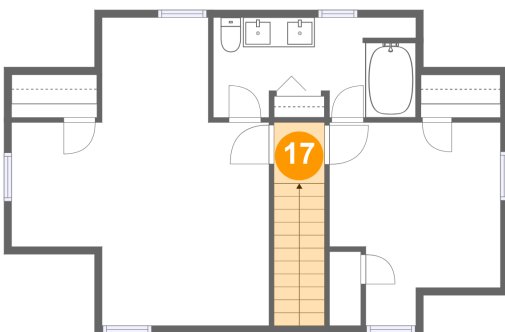
## 16 Floor 3 - Bedroom



Dimensions: 11'7" x 13'8"  
Area: 123 sq. ft  
Counted as Living Area:  
Yes

Heated: Yes  
Finished: Yes  
Enclosed: Yes  
Contiguous:  
Yes  
Permitted: Yes  
Wet Space: No  
Addition: No  
Conversion: No

## 17 Floor 3 - Hall



Dimensions: 3'5" x 4'1"  
Area: 47 sq. ft  
Counted as Living Area:  
Yes

Heated: Yes  
Finished: Yes  
Enclosed: Yes  
Contiguous:  
Yes  
Permitted: Yes  
Wet Space: No  
Addition: No  
Conversion: No