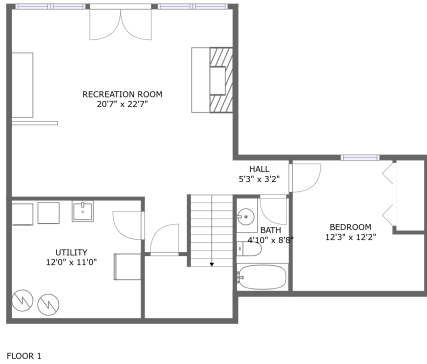
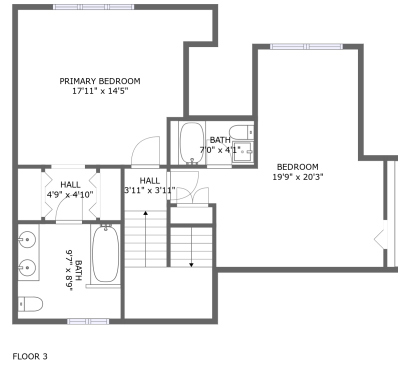
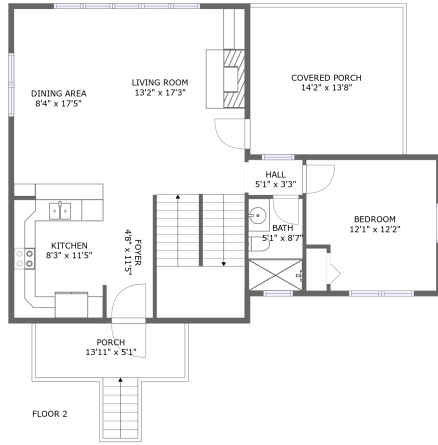


426 Ezra Drive, Buchanan, Botetourt County, Virginia, United States, 24066



Property Summary



3 floors



4 bedrooms



4 bathrooms



2,905 total sqft

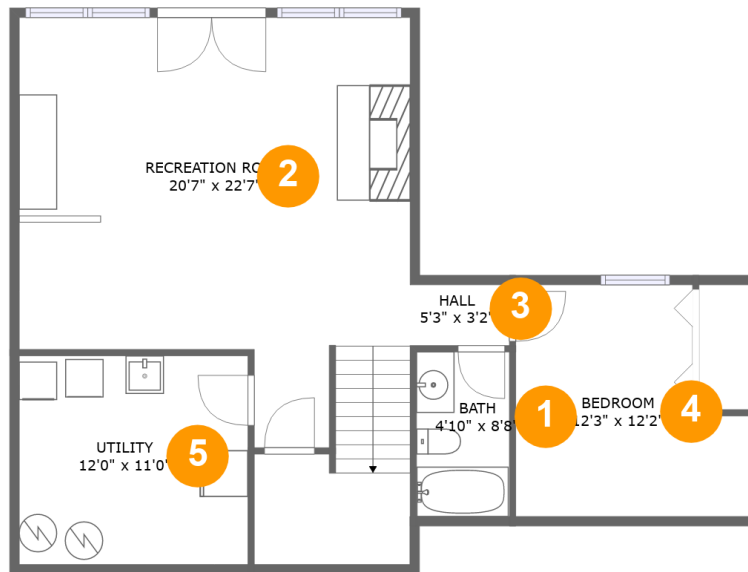


0 garages



2,521 Gross Living Area sqft

426 Ezra Drive, Buchanan, Botetourt County, Virginia, United States, 24066



Room Dimensions

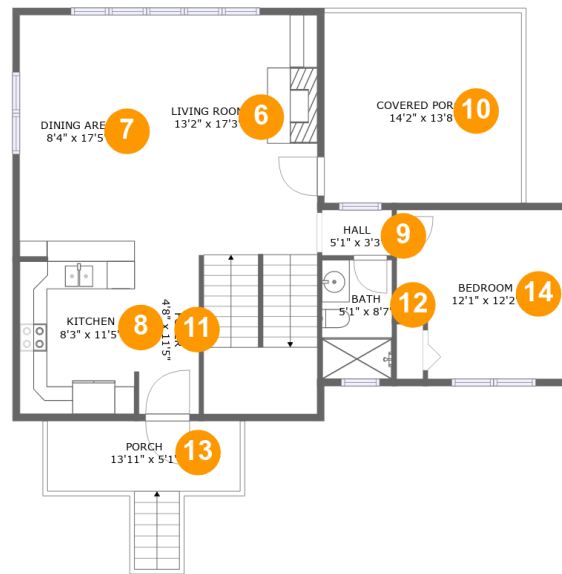
Floor 1

Total sqft: 875

Living area: 875

#	Room name	Dimensions	Area (sqft)	Counted as Living Area
1	Bath	4'10" x 8'8"	42 sq. ft	Yes
2	Recreation Room	20'7" x 22'7"	447 sq. ft	Yes
3	Hall	5'3" x 3'2"	17 sq. ft	Yes
4	Bedroom	12'3" x 12'2"	129 sq. ft	Yes
5	Utility	12'0" x 11'0"	132 sq. ft	Yes

426 Ezra Drive, Buchanan, Botetourt County, Virginia, United States, 24066



Room Dimensions

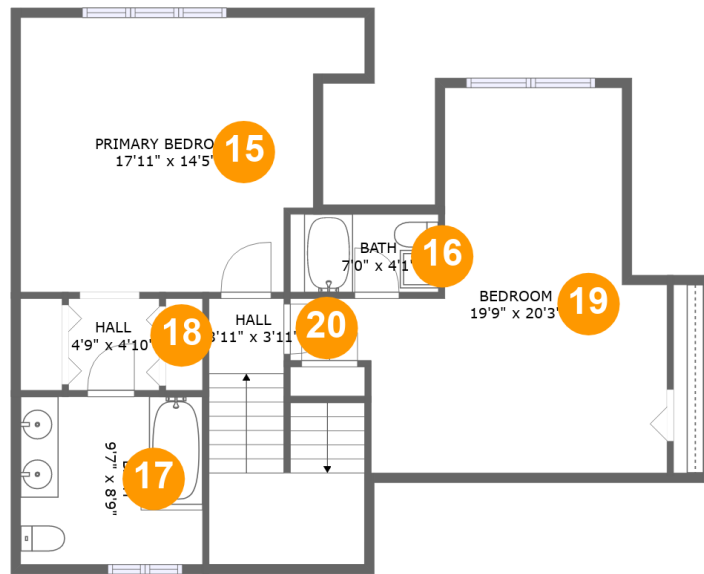
Floor 2

Total sqft: 1166

Living area: 902

#	Room name	Dimensions	Area (sqft)	Counted as Living Area
6	Living Room	13'2" x 17'3"	321 sq. ft	Yes
7	Dining Area	8'4" x 17'5"	144 sq. ft	Yes
8	Kitchen	8'3" x 11'5"	94 sq. ft	Yes
9	Hall	5'1" x 3'3"	17 sq. ft	Yes
10	Covered Porch	14'2" x 13'8"	194 sq. ft	No
11	Foyer	4'8" x 11'5"	52 sq. ft	Yes
12	Bath	5'1" x 8'7"	43 sq. ft	Yes
13	Porch	13'11" x 5'1"	70 sq. ft	No
14	Bedroom	12'1" x 12'2"	138 sq. ft	Yes

426 Ezra Drive, Buchanan, Botetourt County, Virginia, United States, 24066



Room Dimensions

Floor 3

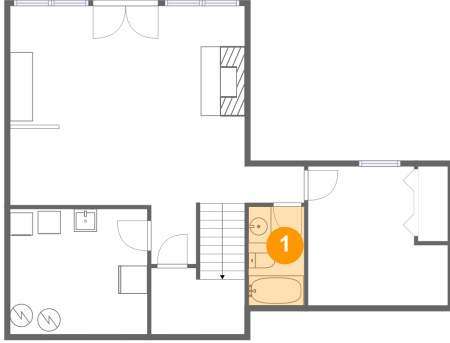
Total sqft: 864

Living area: 744

#	Room name	Dimensions	Area (sqft)	Counted as Living Area
15	Primary Bedroom	17'11" x 14'5"	221 sq. ft	Yes
16	Bath	7'0" x 4'1"	32 sq. ft	Yes
17	Bath	9'7" x 8'9"	84 sq. ft	Yes
18	Hall	4'9" x 4'10"	23 sq. ft	Yes
19	Bedroom	19'9" x 20'3"	254 sq. ft	Yes
20	Hall	3'11" x 3'11"	90 sq. ft	No

**426 Ezra Drive, Buchanan, Botetourt County,
Virginia, United States, 24066**

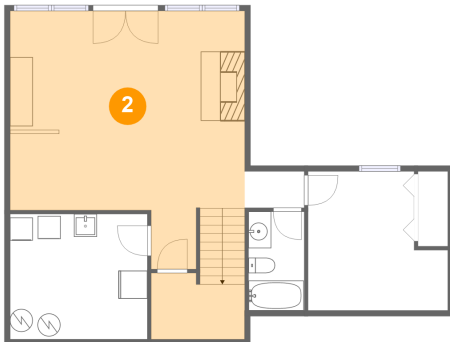
1 Floor 1 - Bath



Dimensions: 4'10" x 8'8"
Area: 42 sq. ft
Counted as Living Area:
Yes

Heated: Yes
Finished: Yes
Enclosed: Yes
Contiguous:
Yes
Permitted: Yes
Wet Space: Yes
Addition: No
Conversion: No

2 Floor 1 - Recreation Room

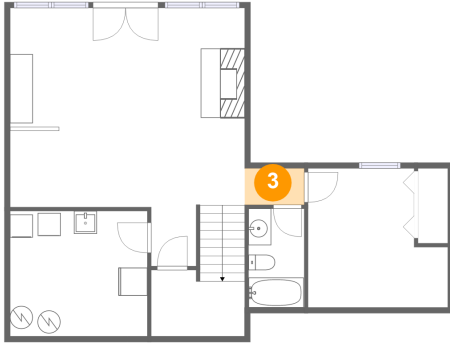


Dimensions: 20'7" x 22'7"
Area: 447 sq. ft
Counted as Living Area:
Yes

Heated: Yes
Finished: Yes
Enclosed: Yes
Contiguous:
Yes
Permitted: Yes
Wet Space: No
Addition: No
Conversion: No

426 Ezra Drive, Buchanan, Botetourt County, Virginia, United States, 24066

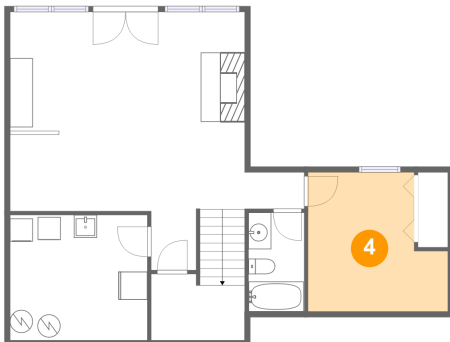
3 Floor 1 - Hall



Dimensions: 5'3" x 3'2"
Area: 17 sq. ft
Counted as Living Area:
Yes

Heated: Yes
Finished: Yes
Enclosed: Yes
Contiguous:
Yes
Permitted: Yes
Wet Space: No
Addition: No
Conversion: No

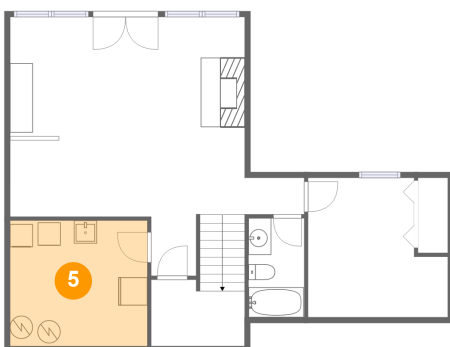
4 Floor 1 - Bedroom



Dimensions: 12'3" x 12'2"
Area: 129 sq. ft
Counted as Living Area:
Yes

Heated: Yes
Finished: Yes
Enclosed: Yes
Contiguous:
Yes
Permitted: Yes
Wet Space: No
Addition: No
Conversion: No

5 Floor 1 - Utility

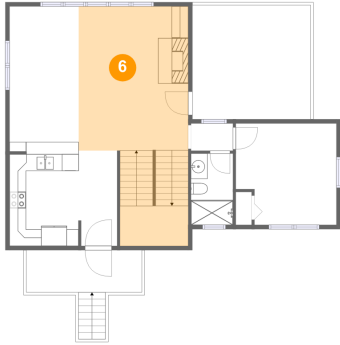


Dimensions: 12'0" x 11'0"
Area: 132 sq. ft
Counted as Living Area:
Yes

Heated: Yes
Finished: Yes
Enclosed: Yes
Contiguous:
Yes
Permitted: Yes
Wet Space: No
Addition: No
Conversion: No

426 Ezra Drive, Buchanan, Botetourt County, Virginia, United States, 24066

6 Floor 2 - Living Room



Dimensions: 13'2" x 17'3"
Area: 321 sq. ft
Counted as Living Area:
Yes

Heated: Yes
Finished: Yes
Enclosed: Yes
Contiguous:
Yes
Permitted: Yes
Wet Space: No
Addition: No
Conversion: No

7 Floor 2 - Dining Area



Dimensions: 8'4" x 17'5"
Area: 144 sq. ft
Counted as Living Area:
Yes

Heated: Yes
Finished: Yes
Enclosed: Yes
Contiguous:
Yes
Permitted: Yes
Wet Space: No
Addition: No
Conversion: No

8 Floor 2 - Kitchen

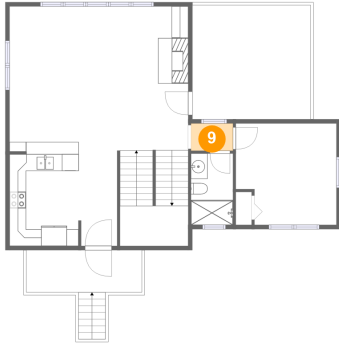


Dimensions: 8'3" x 11'5"
Area: 94 sq. ft
Counted as Living Area:
Yes

Heated: Yes
Finished: Yes
Enclosed: Yes
Contiguous:
Yes
Permitted: Yes
Wet Space: No
Addition: No
Conversion: No

426 Ezra Drive, Buchanan, Botetourt County, Virginia, United States, 24066

9 Floor 2 - Hall



Dimensions: 5'1" x 3'3"
Area: 17 sq. ft
Counted as Living Area:
Yes

Heated: Yes
Finished: Yes
Enclosed: Yes
Contiguous:
Yes
Permitted: Yes
Wet Space: No
Addition: No
Conversion: No

10 Floor 2 - Covered Porch



Dimensions: 14'2" x 13'8"
Area: 194 sq. ft
Counted as Living Area: No

Heated: No
Finished: Yes
Enclosed: No
Contiguous: Yes
Permitted: Yes
Wet Space: No
Addition: No
Conversion: No

11 Floor 2 - Foyer

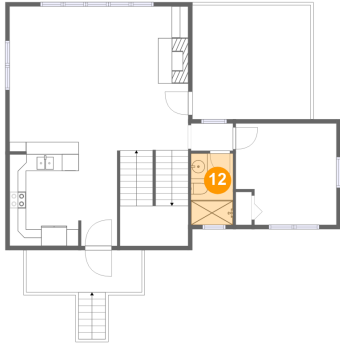


Dimensions: 4'8" x 11'5"
Area: 52 sq. ft
Counted as Living Area:
Yes

Heated: Yes
Finished: Yes
Enclosed: Yes
Contiguous:
Yes
Permitted: Yes
Wet Space: No
Addition: No
Conversion: No

426 Ezra Drive, Buchanan, Botetourt County, Virginia, United States, 24066

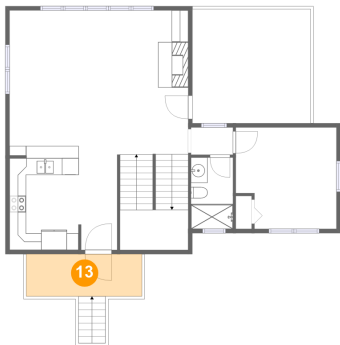
12 Floor 2 - Bath



Dimensions: 5'1" x 8'7"
Area: 43 sq. ft
Counted as Living Area:
Yes

Heated: Yes
Finished: Yes
Enclosed: Yes
Contiguous:
Yes
Permitted: Yes
Wet Space: Yes
Addition: No
Conversion: No

13 Floor 2 - Porch



Dimensions: 13'11" x 5'1"
Area: 70 sq. ft
Counted as Living Area: No

Heated: No
Finished: Yes
Enclosed: No
Contiguous: Yes
Permitted: Yes
Wet Space: No
Addition: No
Conversion: No

14 Floor 2 - Bedroom

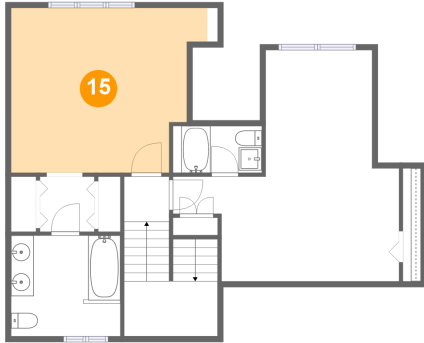


Dimensions: 12'1" x 12'2"
Area: 138 sq. ft
Counted as Living Area:
Yes

Heated: Yes
Finished: Yes
Enclosed: Yes
Contiguous:
Yes
Permitted: Yes
Wet Space: No
Addition: No
Conversion: No

426 Ezra Drive, Buchanan, Botetourt County, Virginia, United States, 24066

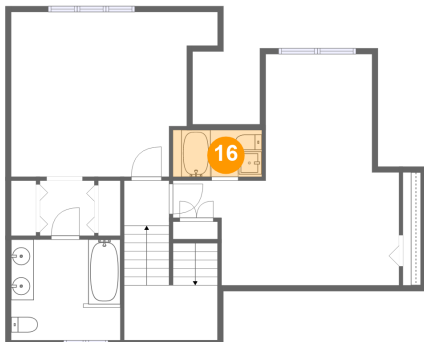
15 Floor 3 - Primary Bedroom



Dimensions: 17'11" x 14'5"
Area: 221 sq. ft
Counted as Living Area:
Yes

Heated: Yes
Finished: Yes
Enclosed: Yes
Contiguous:
Yes
Permitted: Yes
Wet Space: No
Addition: No
Conversion: No

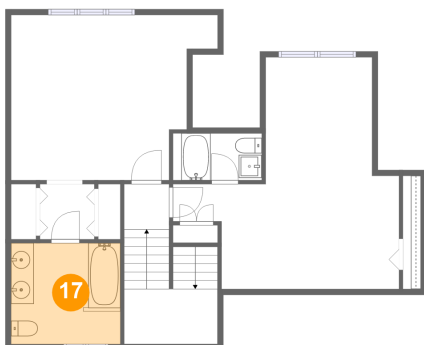
16 Floor 3 - Bath



Dimensions: 7'0" x 4'1"
Area: 32 sq. ft
Counted as Living Area:
Yes

Heated: Yes
Finished: Yes
Enclosed: Yes
Contiguous:
Yes
Permitted: Yes
Wet Space: Yes
Addition: No
Conversion: No

17 Floor 3 - Bath

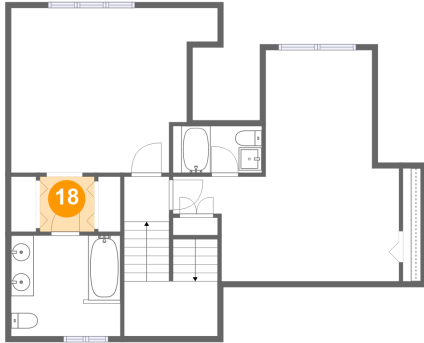


Dimensions: 9'7" x 8'9"
Area: 84 sq. ft
Counted as Living Area:
Yes

Heated: Yes
Finished: Yes
Enclosed: Yes
Contiguous:
Yes
Permitted: Yes
Wet Space: Yes
Addition: No
Conversion: No

**426 Ezra Drive, Buchanan, Botetourt County,
Virginia, United States, 24066**

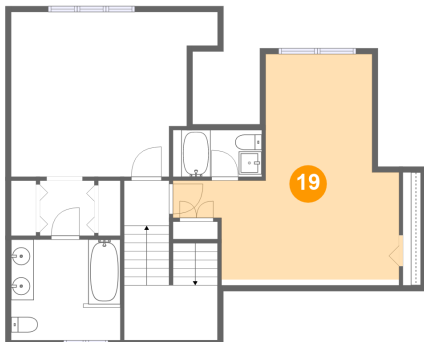
18 Floor 3 - Hall



Dimensions: 4'9" x 4'10"
Area: 23 sq. ft
Counted as Living Area:
Yes

Heated: Yes
Finished: Yes
Enclosed: Yes
Contiguous:
Yes
Permitted: Yes
Wet Space: No
Addition: No
Conversion: No

19 Floor 3 - Bedroom



Dimensions: 19'9" x 20'3"
Area: 254 sq. ft
Counted as Living Area:
Yes

Heated: Yes
Finished: Yes
Enclosed: Yes
Contiguous:
Yes
Permitted: Yes
Wet Space: No
Addition: No
Conversion: No

20 Floor 3 - Hall



Dimensions: 3'11" x 3'11"
Area: 90 sq. ft
Counted as Living Area: No

Heated: Yes
Finished: Yes
Enclosed: Yes
Contiguous: Yes
Permitted: Yes
Wet Space: No
Addition: No
Conversion: No